



Job Name: 25-4616 - 781070 Bohannon Tract 5  
 Job Location: Louisville, KY  
 Contractor: Contech Engineering Solutions

Plant: Beaver Dam

12/4/2025 12:25:07 PM

Tech: J. Coppage

PC: T. Sekula



**Structure ID: 10-CS-8**

**P1 MH096BAVF**

**MH MONOBASE 13F, Custom Ht**

- P5) 24" - CASTING HEIGHT - 4"
- P4) 96" - MH FLAT TOP SPEC. (2 - 24"Ø HOLES) - 17"
- P3) 96" - MH RISER NO STEPS - 48"
- P2) 96" - MH RISER NO STEPS - 96"
- P1) 96" - MH MONOBASE 13F, Custom Ht - 24"
- 1) ASSEMBLY REQUIRED
- 1) CVSTENCILING
- 3) 96" - Conseal CS-102 1.00"
- 2) Hole - 28

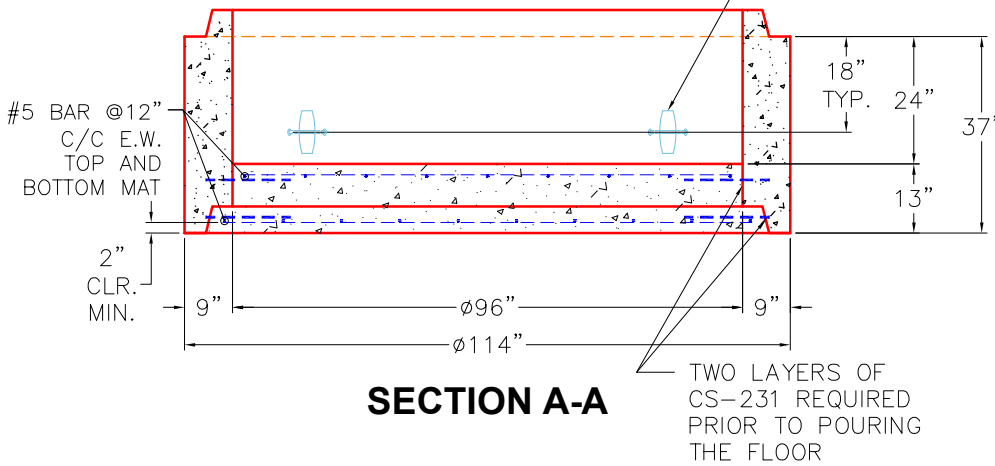
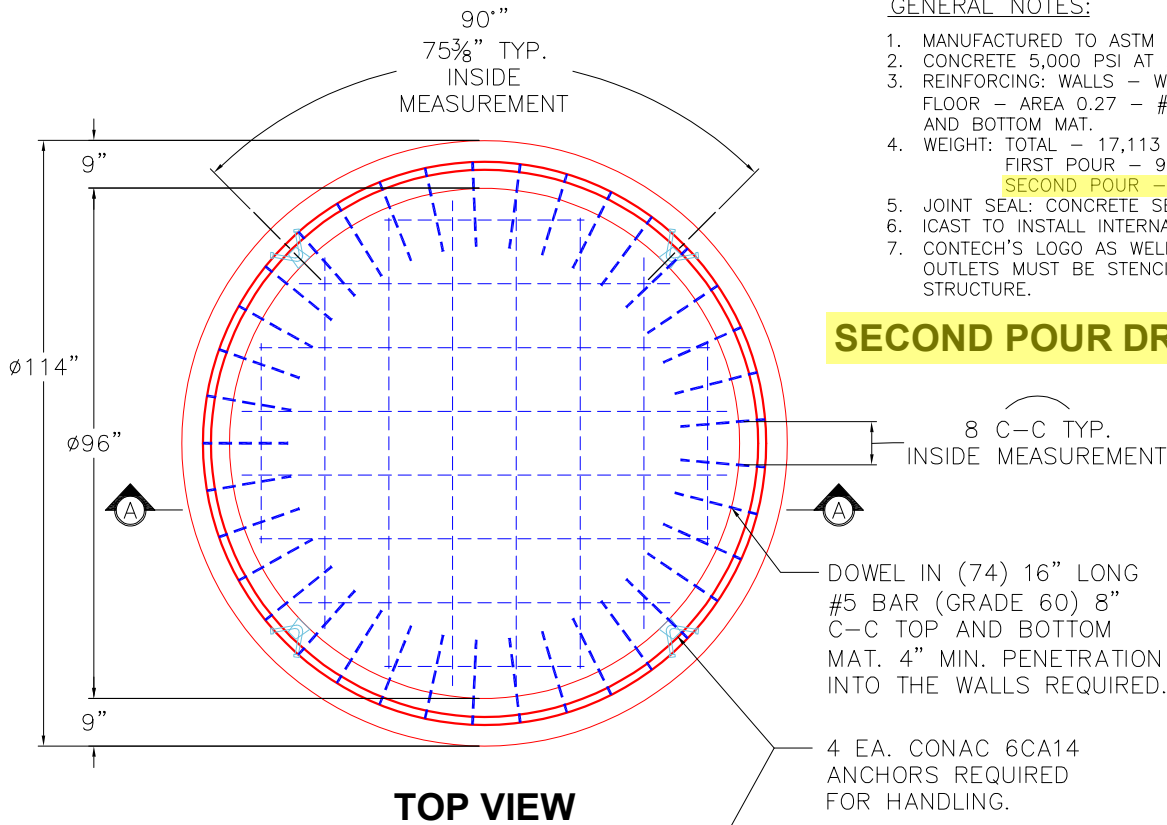
0 lb	<b>Structure Notes:</b>
10015 lb	(4" TALL CASTING PROVIDED BY OTHERS)
11958 lb	
22831 lb	ICAST TO INSTALL THE INTERNALS
17113 lb	
0 lb	CONTECH'S LOGO AS WELL AS THE INLET
0 lb	AND THE OUTLET MUST BE STENCILED
0 lb	ONTO THE STRUCTURE
-----	
Structure Total:	61916 lb

Rim: 438.5'    Rim to Invert: 9.9'    Slack: 11.8"    Sump: 82"    Step Position:

GENERAL NOTES:

1. MANUFACTURED TO ASTM C-478 (LATEST REVISION).
2. CONCRETE 5,000 PSI AT 28 DAYS.
3. REINFORCING: WALLS - WWF AREA 0.24  
 FLOOR - AREA 0.27 - #5 BAR @ 12" C/C TOP AND BOTTOM MAT.
4. WEIGHT: TOTAL - 17,113 LBS.  
 FIRST POUR - 9,216 LBS  
**SECOND POUR - 7,897 LBS**
5. JOINT SEAL: CONCRETE SEALANTS INC. CS-102.
6. ICAST TO INSTALL INTERNAL BRACKETS.
7. CONTECH'S LOGO AS WELL AS THE INLETS AND OUTLETS MUST BE STENCILED ONTO THE STRUCTURE.

**SECOND POUR DRAWING**



Coating (Int):  
 Coating (Ext):

Seam Up: Tongue  
 Seam Dn: n/a

Wall Thickness: 9"  
 Floor Height: 13"

Height (Int): 24"  
 Height (Ext): 37"

Weight (Net): 17113 lb  
 Volume (Net): 4.37cu.yd