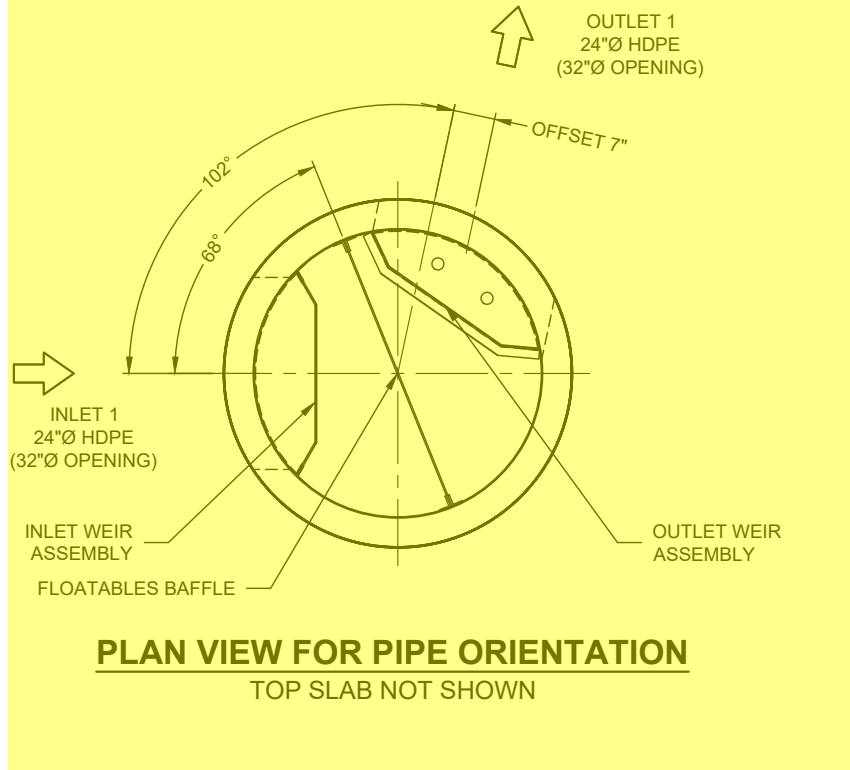
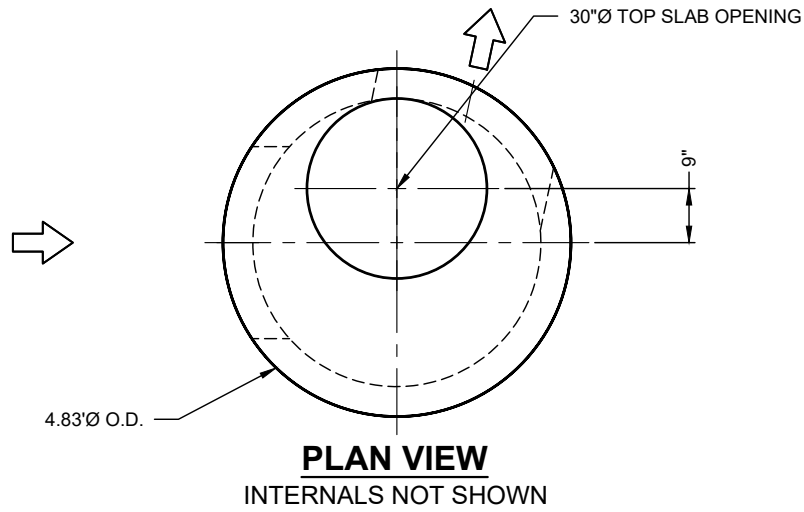
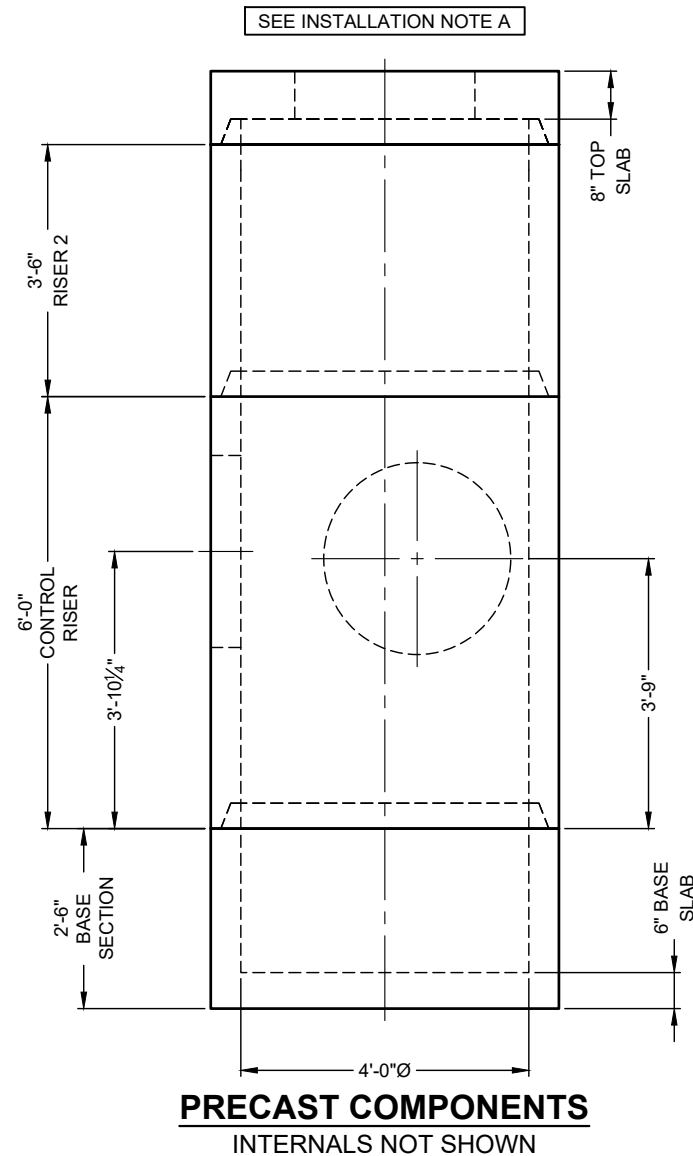
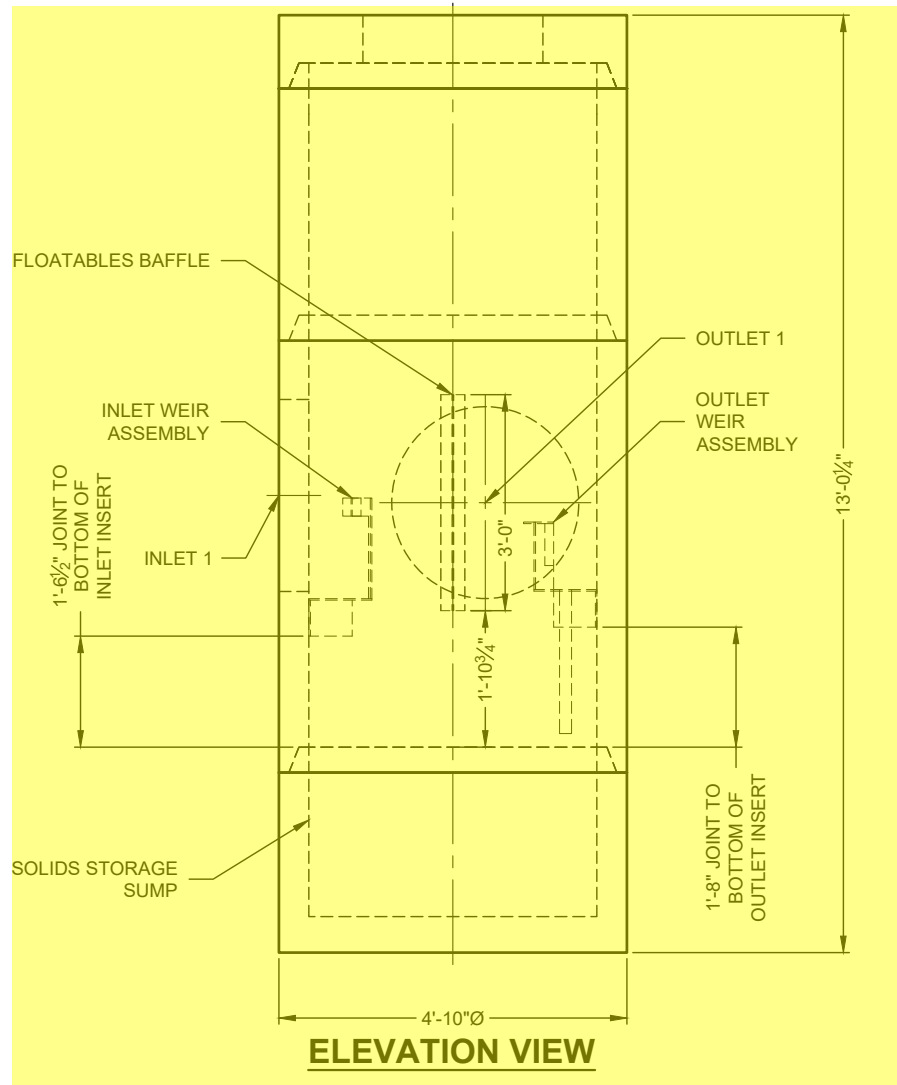


25-4613 - 875407 CONRAD LANE



10-SCX-04
ICAST to fully pre-assemble
internal materials prior to shipment.



MATERIAL LIST

COUNT	DESCRIPTION	PART NUMBER	PROVIDED BY	INSTALLED BY
1	PP2 PLASTIC SCX-04 INLET WEIR INSERT	325-004320	CONTECH	PRECASTER
1	PP2 PLASTIC SCX-04 OUTLET WEIR INSERT	325-004322	CONTECH	PRECASTER
2	2" SCH 40 PVC DOWN PIPE	325-004323	CONTECH	CONTRACTOR
1	3' TALL SCX-04 PP2 PLASTIC FLOATABLES WALL ASSEMBLY	325-004321	CONTECH	PRECASTER
1	SCX-04 HARDWARE KIT	325-000528	CONTECH	PRECASTER
1	SEALANT FOR JOINTS		PRECASTER	CONTRACTOR
1	30"Ø X 4" FRAME AND COVER, EJ #41600483, OR EQUIV.	325-000332	CONTECH	CONTRACTOR

GENERAL NOTES

- DESIGN LOADING - AASHTO HS-20
- ALL PRECAST CONCRETE MANUFACTURED PARTS SHALL CONFORM TO ASTM C-478, WITH MINIMUM CONCRETE STRENGTH OF 4000 PSI AT 28 DAYS
- JOINT SEALANT SHALL CONFORM TO ASTM C-990 OR ASTM C-443
- GROUND WATER ELEVATION ASSUMED AT OUTLET INVERT
- MANUFACTURING TOLERANCE = +/- 1/2-INCH
- SOME HIDDEN LINES MAY BE OMITTED FOR CLARITY

INSTALLATION NOTES

- PRECASTER TO SHIP FRAME AND COVER WITH STRUCTURE
- REFER TO CONTECH ASSEMBLY INSTRUCTIONS FOR ADDITIONAL INFORMATION.
- WHEN APPLICABLE, IF THE INSTALLED DOWN PIPES EXTEND BELOW THE BOTTOM OF THE CONTROL SECTION, THEY SHOULD BE UNINSTALLED AND SECURED TO THE OUTLET WEIR INSERT PRIOR TO SHIPPING.
- PRECASTER TO INSTALL INTERNAL COMPONENTS PRIOR TO SHIPPING UNLESS INSTRUCTED OTHERWISE BY CONTECH
- PIPE OPENINGS SHALL BE STENCILED "INLET" OR "OUTLET" AS APPROPRIATE
- APPLYING ALIGNMENT MARKS ON ALL PIECES OF MULTIPLE PIECE ASSEMBLIES IS ENCOURAGED
- IF STRUCTURE IS DELIVERED IN MULTIPLE SECTIONS, EACH PIECE SHALL BE LABELED WITH THE CONTECH PROJECT NUMBER, SEQUENCE NUMBER AND SITE DESIGNATION

SITE INFORMATION

RIM ELEV. = 870.50
 TOP OF STRUCTURE = 869.46
 INLET PIPE 1 INVERT ELEV. = 861.79
 INLET PIPE 1 DIAMETER AND MATERIAL = 24"Ø HDPE
 OUTLET PIPE INVERT ELEV. = 861.69
 OUTLET PIPE DIAMETER AND MATERIAL = 24"Ø HDPE
 OUTSIDE BOTTOM OF STRUCTURE ELEV. = 856.44

STRUCTURE WEIGHT

APPROXIMATE HEAVIEST PICK = 5000 LBS.
 STRUCTURE IS DELIVERED IN 4 PIECES

TOP SLAB = 2000 LBS.
 RISER 2 = 3500 LBS.
 CONTROL RISER = 5000 LBS.
 BASE SECTION = 3500 LBS.

CONTECH
FABRICATION
DRAWING

ICAST
5888 / 757440
LAYOUT 1A
N/ATIW
6.15TS

DATE:	11/17/2025		
DESIGNED:	MDB	DRAWN:	MDB
CHECKED:	CEU	APPROVED:	MDB
PROJECT No.:	875407	SEQUENCE No.:	10
SHEET:	1 OF 2		

SCX-04 - 875407-10
 CONRAD LANE & NORTH BEND ROAD
 FLORENCE, KY
 SITE DESIGNATION: 113

CONTECH
ENGINEERED SOLUTIONS LLC
www.conteches.com
9100 Centre Pointe Dr., Suite 400, West Chester, OH 45389
800-335-1122 513-645-7700 513-645-7955 FAX
SciCloneX
FOR PARTS AND DRAWINGS, GO TO www.contech.com

The design and information shown on this drawing is the property of CONTECH ENGINEERED SOLUTIONS LLC, a contractor by CONTECH Construction Products Inc. or one of its affiliated companies ("CONTECH"). Neither this drawing nor any part thereof, may be used, copied, reproduced, or transmitted in any form or by any means, electronic or mechanical, including photocopying, recording, or by any information storage and retrieval system, without the written consent of CONTECH. Failure to comply with the above conditions shall constitute an acknowledgment of the user's own risk and CONTECH expressly disclaims any liability or responsibility for such use. If discrepancies between the supplied information upon which the drawing is based and actual field conditions are encountered as the work progresses, the user is encouraged to immediately notify CONTECH. CONTECH immediately for re-evaluation of the design. CONTECH accepts no liability for design based on missing, incomplete or inaccurate information supplied by others.