

Job Name: 25-4613 - 875407 Conrad Lane
 Job Location: Burlington, KY
 Contractor: Contech Engineering Solutions

Plant: Beaver Dam
 12/9/2025 1:57:02 PM

Tech: J. Coppage
 PC: T. Sekula



Structure ID: 10-SCX-04

P4 MH048LD12-30

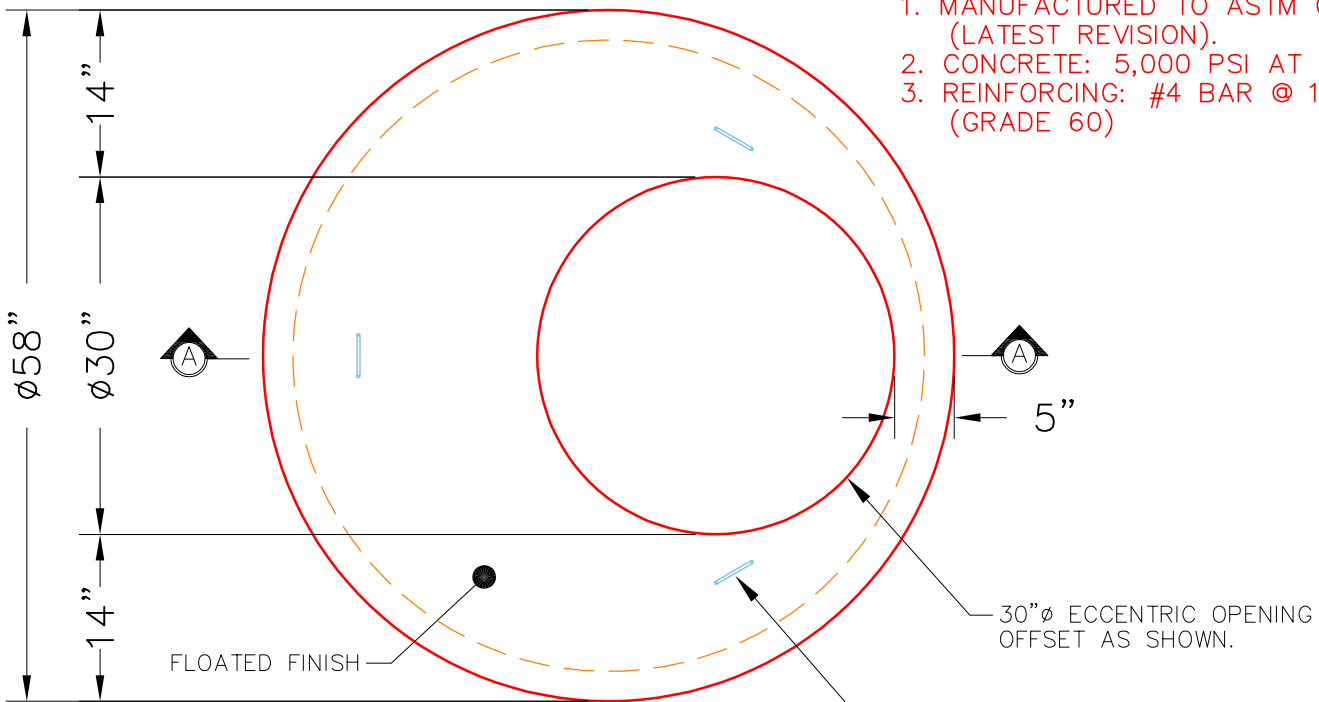
MH FLAT LID w/30in ECC Hole

- P5) 30" - CASTING HEIGHT - 4"
- P4) 48" - MH FLAT LID w/30in ECC Hole - 12"
- P3) 48" - MH RISER NO STEPS - 42"
- P2) 48" - MH RISER NO STEPS - 72"
- P1) 48" - MH BASE - 24"
- 1) ASSEMBLY REQUIRED
- 1) CVSTENCILING
- 3) 48" - Conseal CS-102 1.00"
- 2) Hole - 32

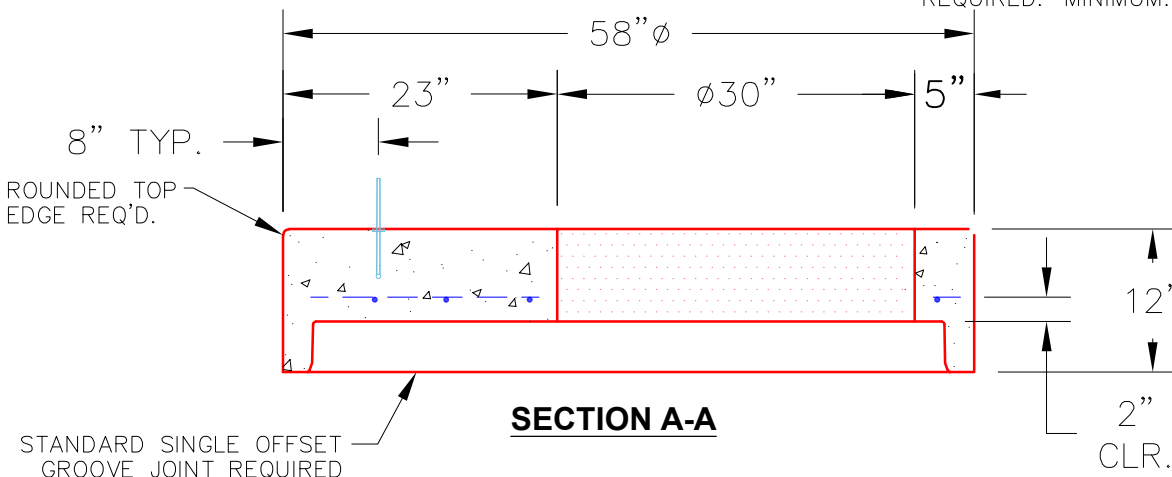
0 lb Structure Notes:
 1413 lb (4" CASTING BY OTHERS)
 2934 lb
 4267 lb
 3007 lb
 0 lb LIFTING ANCHORS TO BE INSTALLED
 0 lb ON THE OUTSIDE OF THE STRUCTURE
 0 lb ICAST TO INSTALL THE INTERNALS
 0 lb
 0 lb CONTECH'S LOGO AS WELL AS THE
 Structure Total: 11622 lb INLET AND THE OUTLET MUST BE
 STENCILED ONTO THE STRUCTURE

NOTES:

1. MANUFACTURED TO ASTM C-478 (LATEST REVISION).
2. CONCRETE: 5,000 PSI AT 28 DAYS.
3. REINFORCING: #4 BAR @ 10" O.C. E.W. (GRADE 60)



PLAN VIEW



SECTION A-A

Coating (Int): Coating (Ext):	Seam Up: Flat Seam Dn: Groove	Wall Thickness: 5"	Height (Ext): 12"	Weight (Net): 1413 lb Volume (Net): 0.36cu.yd
----------------------------------	----------------------------------	--------------------	-------------------	--