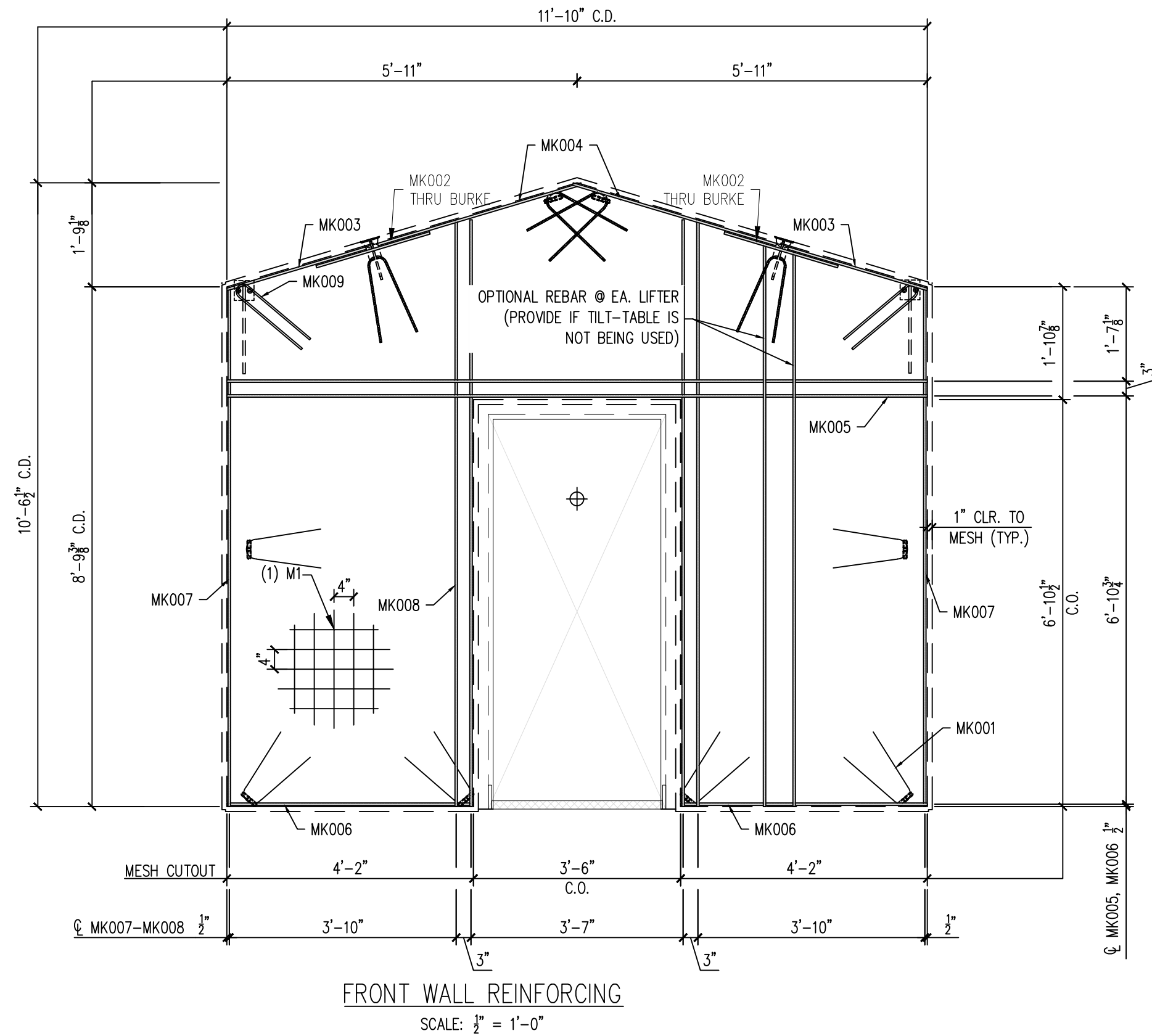
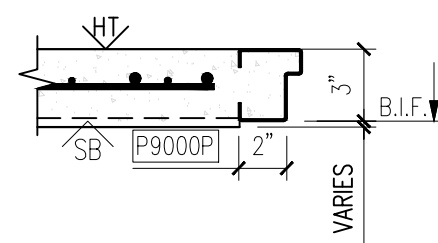


25-4604 - Nashville Road Sewer Interceptor
 Precast Building
 Product ID - CVW
 FRONT WALL - BFRG-12
 Weight - 3,855 LBS Each
 1 Required



FRONT WALL REINFORCING
 SCALE: 1/2" = 1'-0"



6

| REINFORCING SCHEDULE | | |
|----------------------|----------------|------|
| MARK # | DESCRIPTION | QTY. |
| MK001 | #3 X 3'-0" | 10 |
| MK002 | #3 X 2'-0" | 2 |
| MK003 | #3 X 2'-5 1/4" | 2 |
| MK004 | #3 X 3'-7" | 2 |
| MK005 | #3 X 11'-10" | 2 |
| MK006 | #3 X 4'-2" | 2 |
| MK007 | #3 X 8'-9 1/4" | 2 |
| MK008 | #3 X 9'-11" | 4 |
| MK009 | #3 X 3'-1" | 2 |

| MESH SCHEDULE | | |
|---------------|--------------------------------------|------|
| MARK # | DESCRIPTION | QTY. |
| M1 | W4XW4 4"X4" WWF 11'-10" X 10'-6 1/2" | 1 |

EASI-SET® WORLDWIDE
 5119 Catlett Rd. • Midland, VA 22728 • info@EasiSet.com
 www.EasiSet.com • 800-547-4045 • Fax 540-439-2541

| REV | DESCRIPTION | DATE |
|------|-------------|------|
| INI. | | |

PROJECT: 12'x12' STANDARD EASI-SET GABLED BUILDING
 NASHVILLE ROAD INTERCEPTOR
 BOWLING GREEN, KY
 CONTRACTOR: INFINITY PIPELINE, LLC/WARREN COUNTY WATER DISTRICT

MESSAGE CENTER

- REFER TO DETAILS AND SECTION FOR REINFORCEMENT PLACEMENT
- SUPPLEMENTAL STEEL FOR STRIPPING AND HANDLING MAY BE ADDED AS REQUIRED.

NOTE:
 1. CONSTRUCT REBAR-MESH CAGE ACCORDING TO THE DRAWINGS. SECURE LIFTING APPARATUS TO FORM AND ADD PROPER REINFORCEMENT. PLACE REBAR-MESH CAGE AND HAIRPINS AT INSERTS WITH PROPER CLEARANCES (PER DRAWINGS).

CHECKED BY: _____ DATE: _____
 APPROVED BY: _____ DATE: _____

| | |
|---------------------|----------------------|
| PRODUCT BUILDING | SALES ORDER NUMBER - |
| SHEET NUMBER 2 OF 2 | NUMBER REQUIRED 1 |

SCALE NTS
 DRAWN BY FTL
 CHECK BY WCR
 ISSUE DATE 03.30.26
 PIECE MARK BFRG-12