

**Job Name: 25-4595 - 4015 Utah Ave**  
**Job Location: Nashville, TN 37209**  
**Contractor: Hayes Pipe Supply**

PC: E. Bradley  
 TECH: Jared - F  
 Plant: 100



Structure ID: **A2 (3)**  
 Spec: Storm  
 Type: STM.MH  
 Size: 48"

Rim: 534.07'  
 Invert: 528.82'  
 Rim to Invert: 5.25'

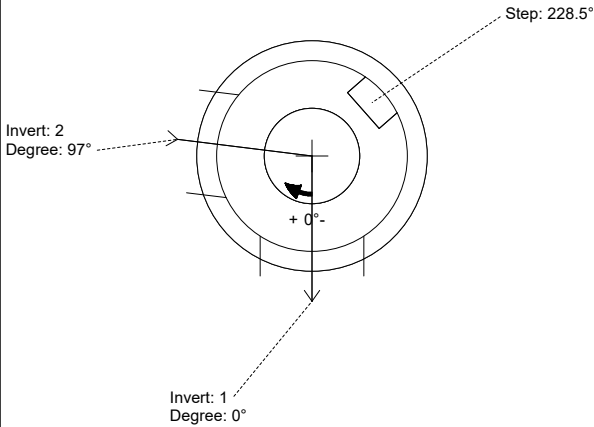
Sump: 2.5"  
 Floor (Top): 528.612'  
 Floor Height: 6"

Floor (Bot): 528.112'  
 Overall Height: 5.917'  
 Slack: 0.5"

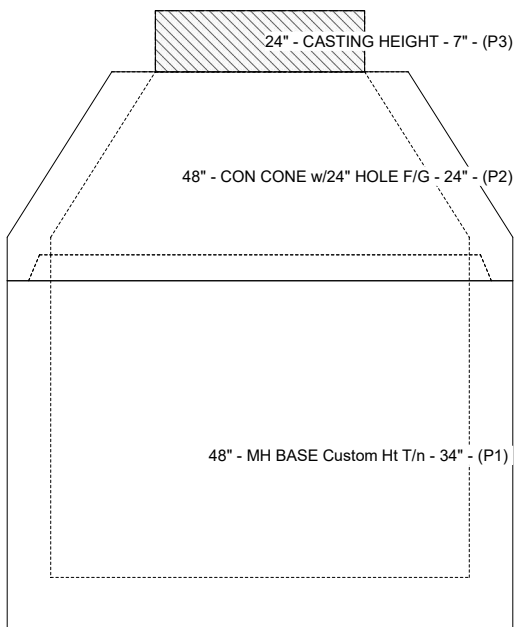
- Structure Notes:**
1. PER ASTM C-478 SPECIFICATIONS
  2. CONCRETE: 4,000 PSI AT 28 DAYS
  3. REINFORCEMENT: PER ASTM A615
  4. NO STORM INVERT
  5. STEPS AT 228.5 DEGREES
  6. CASTING SUPPLIED BY OTHERS

**STRUCTURE SUMMARY:**

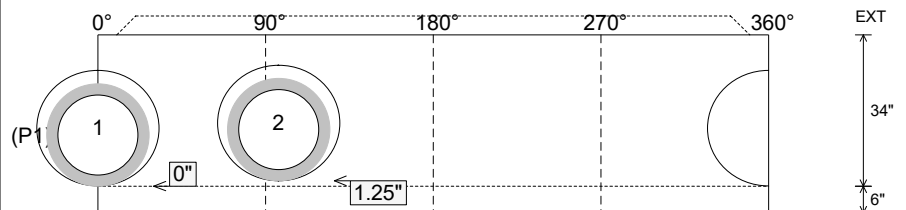
- P3) 24" - CASTING HEIGHT - 7"  
 P2) 48" - CON CONE w/24" HOLE F/G - 24"  
 P1) 48" - MH BASE Custom Ht T/n - 34"  
 1) 48" - Conseal CS-102 1.00"  
 2) Hole - 26  
 5) MH Step ML-10-TDS-NCR - 10"
- 0 lb  
 2252 lb  
 3239 lb  
 0 lb  
 0 lb  
 0 lb  
 \_\_\_\_\_  
 Structure Total: 5491 lb



Position	Elev	Angle	Pipe	Pipe OD	Hole	Connector	Up (")	Ref
Rim	534.07'							
Reducer								
Invert 1	528.82'	0°	18" RCP B WALL	23"	26"	Hole 26	0"	P1
Invert 2	528.92'	97°	18" RCP B WALL	23"	26"	Hole 26	1.25"	P1
Invert 3								
Invert 4								
Invert 5								
Invert 6								
Invert 7								
Invert 8								



**Cast (Int. Dim.) - Interior Dimensions**



Submittal Drawing  
 2/26/2026 12:02:03 PM

SUBMITTAL  
 APPROVED BY: