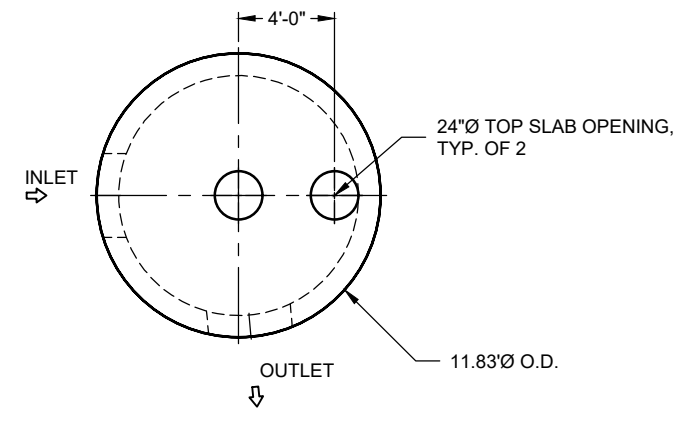


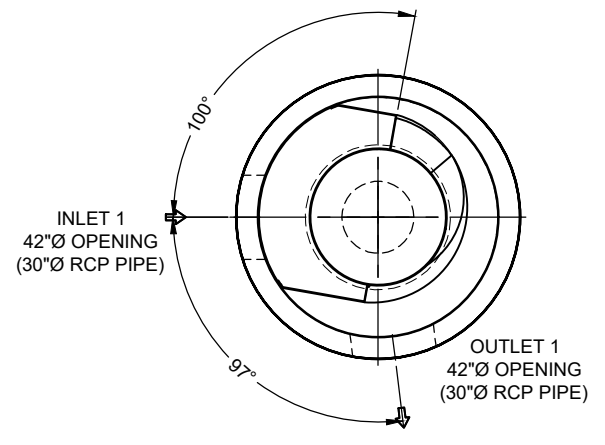
I:\QUIKRETE\NETCONTECH\MERLIN\PROJECT\ACTIV\823277\30-CDS\DRAWINGS\823277-30-CDS5678-10-C-CONFAB.DWG 11/7/2025 2:59 PM

**25-4593 - 823277 Central Ramp Expansion BNA**

**030-CDS5678-10-C ADDITIONAL INFORMATION**



**PLAN VIEW**  
INTERNALS NOT SHOWN



**PLAN VIEW FOR PIPE ORIENTATION**  
TOP SLAB NOT SHOWN

INTERNAL COMPONENTS TO BE INSTALLED ON SITE BY CONTECH FIELD CONSULTANT. PRECASTER TO SHIP ALL INTERNAL COMPONENTS WITH STRUCTURE

LIFTERS ARE TO BE PLACED ON THE INSIDE OF THE PRECAST SECTIONS

SEE INSTALLATION NOTE A

**MATERIAL LIST**

COUNT	DESCRIPTION	PART NUMBER	PROVIDED BY	INSTALLED BY
1	5678-10 CONCENTRIC FIBERGLASS INSERT	325-001627	CONTECH	CONTRACTOR
1	5678, 2400 micron, 5.71' O.D. x 8.08' SCREEN, GREEN FLANGE UP	335-000398	CONTECH	CONTRACTOR
1	56 SERIES HARDWARE KIT	325-003922	CONTECH	CONTRACTOR
1	SEALANT FOR JOINTS		PRECASTER	CONTRACTOR
2 PLC	GRADE RINGS/RISERS		PRECASTER	CONTRACTOR
2	24"Ø X 4" FRAME AND COVER, EJ #41600389, OR EQUIV.	325-000350	CONTECH	CONTRACTOR

**GENERAL NOTES**

- DESIGN LOADING - AASHTO HS-20
- ALL PRECAST CONCRETE MANUFACTURED PARTS SHALL CONFORM TO ASTM C-478, WITH MINIMUM CONCRETE STRENGTH OF 4000 PSI AT 28 DAYS
- JOINT SEALANT SHALL CONFORM TO ASTM C-990 OR ASTM C-443
- GROUND WATER ASSUMED AT OUTLET INVERT
- MANUFACTURING TOLERANCE = +/- 1/2-INCH
- SOME HIDDEN LINES MAY BE OMITTED FOR CLARITY

**INSTALLATION NOTES**

- PRECASTER TO SHIP FRAME AND COVER WITH STRUCTURE
- REFER TO CONTECH ASSEMBLY INSTRUCTIONS FOR ADDITIONAL INFORMATION
- FOR PROPER SCREEN ORIENTATION, FLANGE IS COLOR CODED, INSTALL GREEN FLANGE UP
- IF REQUIRED, PVC HYDRAULIC SHEAR PLATE IS PLACED ON SEPARATION SLAB AT BOTTOM OF SCREEN CYLINDER
- PRECASTER TO INSTALL INTERNAL COMPONENTS PRIOR TO SHIPPING UNLESS INSTRUCTED OTHERWISE BY CONTECH
- PIPE OPENINGS SHALL BE STENCILED "INLET" OR "OUTLET" AS APPROPRIATE
- APPLYING ALIGNMENT MARKS ON ALL PIECES OF MULTIPLE ASSEMBLIES IS HIGHLY ENCOURAGED
- IF STRUCTURE IS DELIVERED IN MULTIPLE SECTIONS, EACH PIECE SHALL BE LABELED WITH THE CONTECH PROJECT NUMBER, SEQUENCE NUMBER AND SITE DESIGNATION

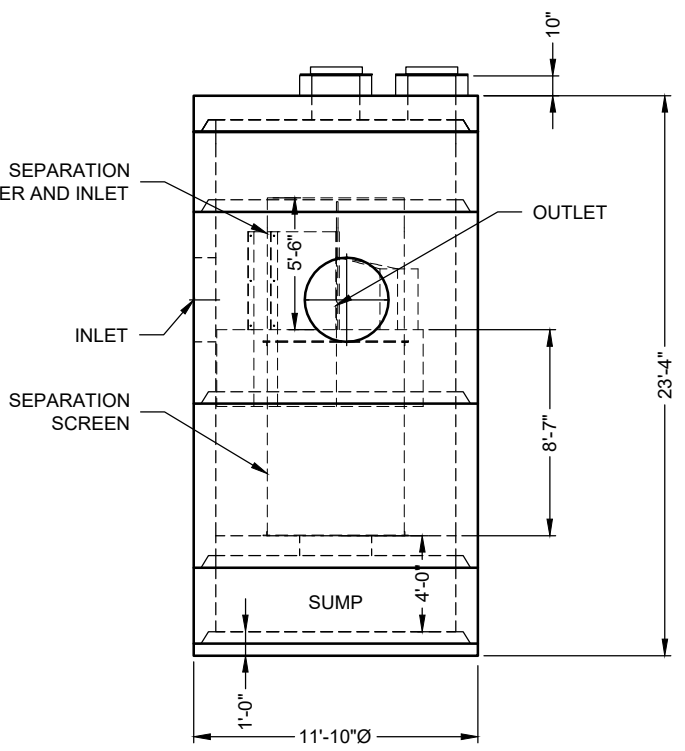
**SITE INFORMATION**

RIM ELEV. = 502.71+/-  
 TOP OF STRUCTURE ELEV. = 501.51  
 INLET PIPE 1 INVERT ELEV. = 491.76  
 INLET PIPE 1 DIAMETER AND MATERIAL = 30" RCP  
 OUTLET PIPE 1 INVERT ELEV. = 491.76  
 OUTLET PIPE 1 DIAMETER AND MATERIAL = 30" RCP  
 OUTSIDE BOTTOM OF STRUCTURE ELEV. = 478.18

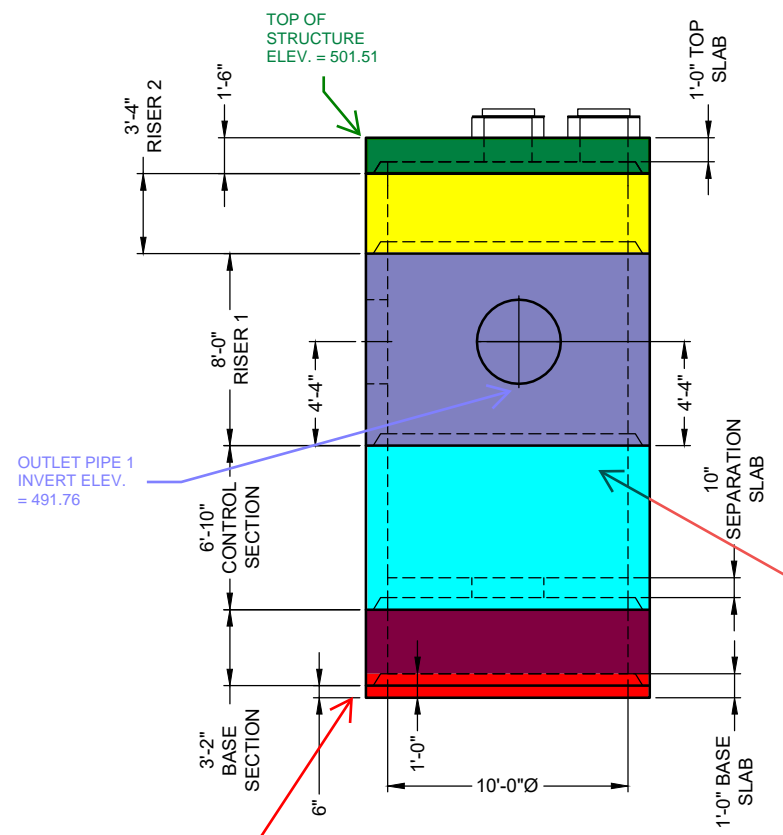
**STRUCTURE WEIGHT**

APPROXIMATE HEAVIEST PICK = 46000 LBS.  
 STRUCTURE IS DELIVERED IN 6 PIECES

- TOP SLAB = 16500 LBS.
- RISER 2 = 15000 LBS.
- RISER 1 = 36500 LBS.
- CONTROL SECTION = 46000 LBS.
- BASE RISER = 17000 LBS.
- BASE SLAB = 16000 LBS.



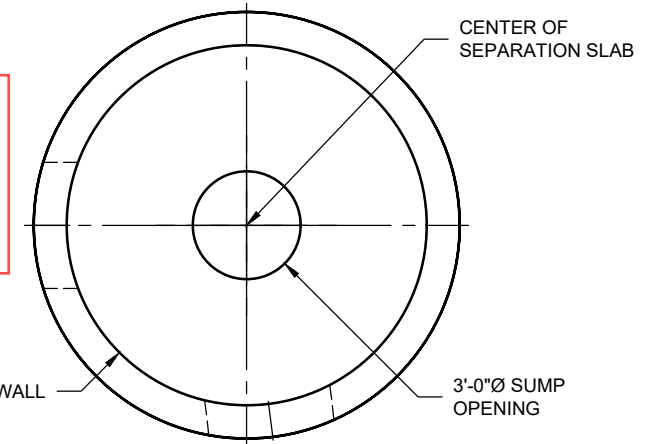
**ELEVATION VIEW**



**PRECAST COMPONENTS**  
INTERNALS NOT SHOWN

PREVIOUSLY MADE, AT ICAST. DO NOT REMAKE. (CONTROL SECTION, BASE SECTION, BASE SLAB)

CONTECH  
**FABRICATION**  
DRAWING



**SEPARATION SLAB**

ICAST  
5888 / 757440  
LAYOUT 1G  
70.16 TS

The design and information shown on this drawing is the property of CONTECH ENGINEERED SOLUTIONS LLC. It is to be used only for the project and location specified. No part of this drawing, nor any part thereof, may be used, copied, or reproduced in any form without the written consent of CONTECH. Failure to comply with these terms and conditions shall constitute a breach of contract and CONTECH expressly disclaims any liability or responsibility for such use.

If discrepancies between the supplied information upon which the drawing is based and actual field conditions are encountered as site work progresses, these are to be resolved by the contractor. CONTECH shall not be held responsible for re-evaluation of the design. CONTECH accepts no liability for designs based on missing, incomplete or inaccurate information supplied by others.

MARK	DATE	REVISION DESCRIPTION	BY
1	11/07/25	REVISED INVERTS AND RIMS	BEC

**CDS5678-10-C - 823277-030**  
**CENTRAL RAMP EXPANSION PACKAGE 2**  
**NASHVILLE, TN**  
**SITE DESIGNATION: HDS #002**

**CONTECH**  
ENGINEERED SOLUTIONS LLC  
www.conteches.com  
7531 Ridge Road, Hanover, MD 21076  
410-740-9490 410-740-3682 FAX  
443-457-1500

FOR PATENT INFORMATION, GO TO www.conteches.com/IP

DATE: 6/17/25	
DESIGNED: MJS	DRAWN: BEC
CHECKED: MJS	APPROVED: MJS
PROJECT No.: 823277	SEQUENCE No.: 030
SHEET: 1 OF 2	