

Job Name: 25-4593 - 823277 Central Ramp Expansion BNA
 Job Location: Nashville, TN
 Contractor: Contech Engineering Solutions

Plant: Beaver Dam, KY
 12/2/2025 11:09:50 AM

Tech: J. Coppage
 PC: T. Sekula



Structure ID: 025-CDS5678-10-C

P4 MH120RS96 MH RISER

- P11) 24" - CASTING HEIGHT - 0"
- P10) 72" - MH FLAT TOP SPEC. (2 - 24"Ø HOLES) - 25"
- P9) 72" - MH RISER - 60"
- P8) 72" - MH RISER - 84"
- P7) 72" - MH RISER - 84"
- P6) 120" - MH Transition Slab 72" Spec. w/(2) 24" Holes - 22"
- P5) 120" - MH RISER - 84"
- P4) 120" - MH RISER - 96"
- P3) 120" - MH RISER Custom Ht - 90"
- P2) 120" - MH RISER - 36"
- P1) 120" - MH SEPARATE BASE-T (142" OD) - 8"
- 1) CVSTENCILING
- 1) This Structure Includes a Cast-in Item - (2 Ea. Castings)
- 1) SECONDARY POUR - Separation Slab*
- 5) 120" - Conseal CS-102 1.00"
- 4) 72" - Conseal CS-102 1.00"

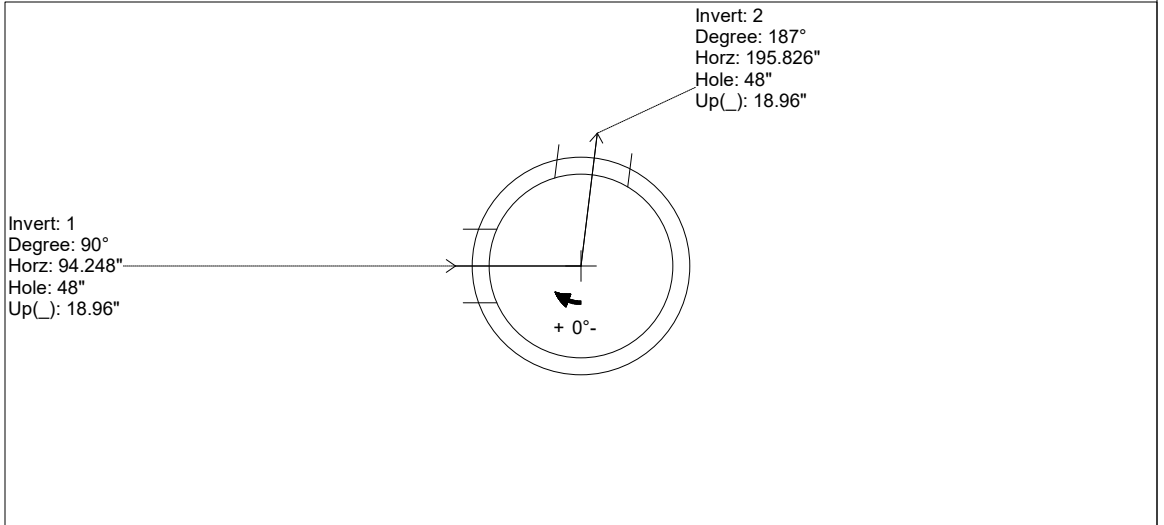
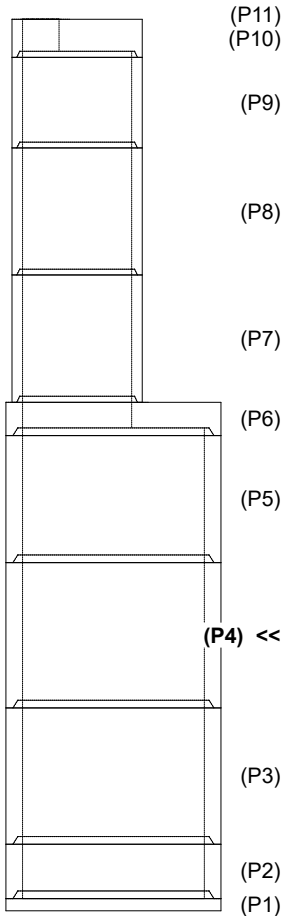
****USE REINFORCEMENT
 INFORMATION PROVIDED
 BY CONTECH****

- 0 lb
8609 lb
8747 lb
12246 lb
12246 lb
22335 lb
31909 lb
33046 lb
34189 lb
13675 lb
17421 lb
0 lb
0 lb
0 lb
10292 lb
0 lb
0 lb
- Structure Notes:**
1. PER ASTM C-478 SPECS
 2. CONCRETE: 7,000 PSI AT 28 DAYS
 3. REINFORCEMENT: PER ASTM A615 (GRADE 60)
 4. 2 EA. CAST-IN CASTINGS PROVIDED BY OTHERS
 5. CASTINGS TO BE CAST INTO FLAT LID FLANGE SIDE UP
- SPECIAL NOTES:**
1. LIFTING HOOKS TO BE INSTALLED ON THE INSIDE OF THE STRUCTURE
 2. CONTECH'S LOGO AS WELL AS INLET & OUTLET MUST BE STENCILED ONTO STRUCTURE
 3. INTERNALS TO BE INSTALLED BY OTHERS

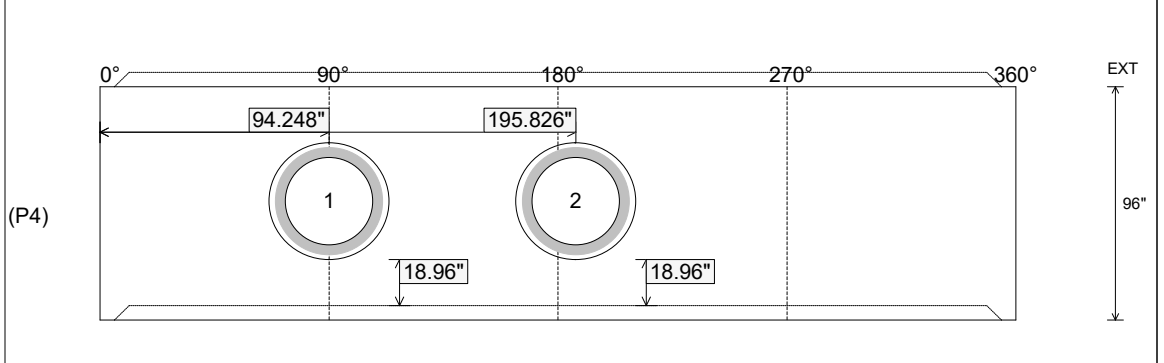
2) Rim to Invert: 35.3' Slack: -0.44" Sump: 156.96" Step Position 0

Position	Elev	Angle	Ext. (cw)	Pipe	Structure Total	Pipe OD	Connector	Hole	Horz Size	Up ()	Offset
Invert 1	519.29'	90°	111.527"	36" RCP B WALL	2047.14 lb	44"	Hole 48	48"	49.382"	18.96"	0"
Invert 2	519.29'	187°	231.727"	36" RCP B WALL		44"	Hole 48	48"	49.382"	18.96"	0"
Invert 3											
Invert 4											
Invert 5											
Invert 6											
Invert 7											
Invert 8											

RIGHT-SIDE UP VIEW (int. dimensions)



INSIDE WALL DIMENSIONS



Coating (Int): Coating (Ext):	Seam Up: Tongue Seam Dn: Groove	Wall Thickness: 11" Floor Height: 0"	Height (Int): 96" Height (Ext): 96"	Weight (Net): 33046 lb Volume (Net): 8.44cu.yd
----------------------------------	------------------------------------	-----------------------------------------	----------------------------------------	---------------------------------------------------

25-4593 RISER REINFORCEMENT 025-CDS5678-10-C

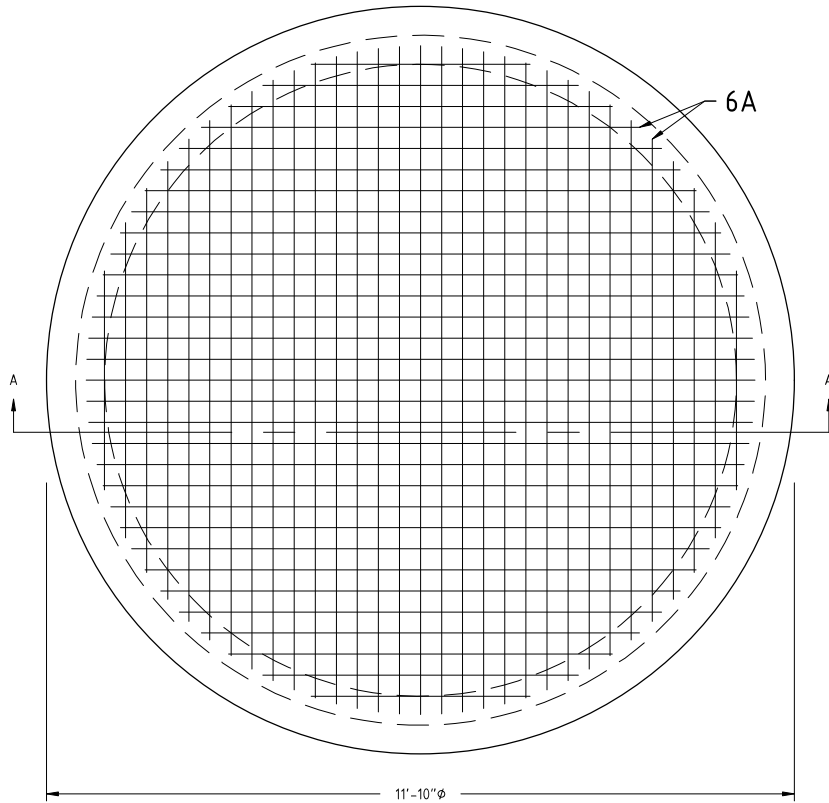
DESIGN NOTE:

AIRCRAFT LOADING - 80 KIP WHEEL LOAD - 17.19"x12.68" TIRE FOOTPRINT
 WATER TABLE AT FINISHED GRADE
 DESIGN CONFORMS TO AASHTO LRFD
 CONCRETE 28 DAY COMPRESSIVE STRENGTH - 7000 PSI
 REINFORCEMENT STEEL - 60,000 PSI
 REBAR MIN SPLICE LENGTHS: #3-17" #4-22" #5-28" #6-33"
 REBAR MIN BEND DIAMETERS: #3-2.25" #4-3" #5-3.75" #6-4.5"
 PLACE 4-#4 BAR DIAGONAL AROUND OPENING(S)

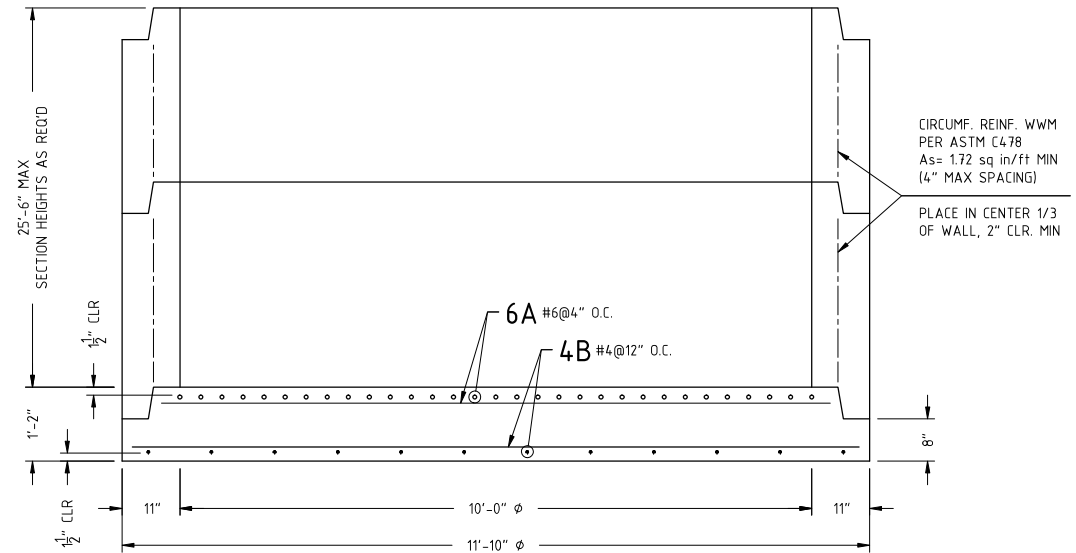
823277-25

REINFORCING STEEL SCHEDULE

MARK	NO.	LENGTH	TYPE	BENDING DIAGRAM O.D.
6A	62	10'-7" MAX	STR.	
4B	24	11'-6" MAX	STR.	



PLAN VIEW
(TOP MAT SHOWN)



SECTION A-A



PROPRIETARY AND CONFIDENTIAL:
 THE INFORMATION CONTAINED IN THIS DOCUMENT IS THE SOLE PROPERTY OF CONTECH. ANY REPRODUCTION IN PART OR AS A WHOLE WITHOUT THE WRITTEN PERMISSION OF CONTECH IS PROHIBITED.

REVISIONS	
B	
C	
D	
E	

DRAWN BY: T.J.G.
 DESIGN BY: A.JEFFREY
 PLANT:
 SCALE: 1/2" = 1'

CONTECH - CDS - BASESLAB
 10'-0"Ø
 REINFORCEMENT

DATE: 10/21/25 11"x17" PAGE 1 OF 1