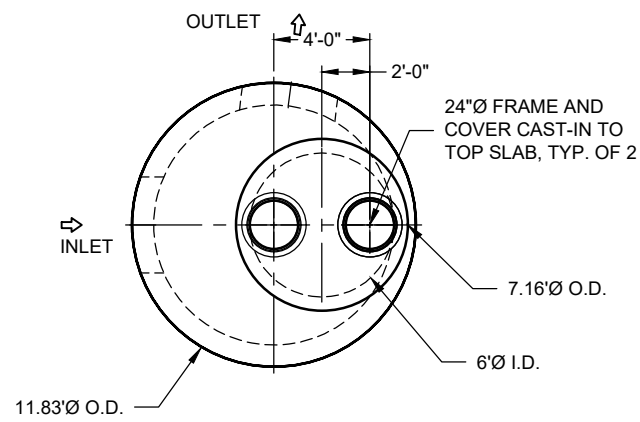


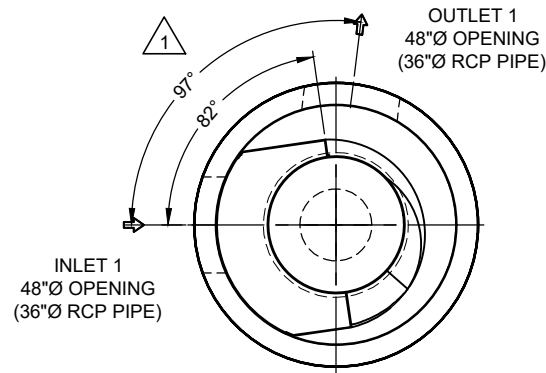
I:\QUIKRETE.NET\CONTECH\HMER\PROJECTS\2025\823277\25-CDS\DRAWINGS\KMR EDIT 823277-25-CDS5678-10-C-CONFRAB.DWG 11/17/2025 12:48 PM

**25-4593 - 823277 Central Ramp Expansion BNA**

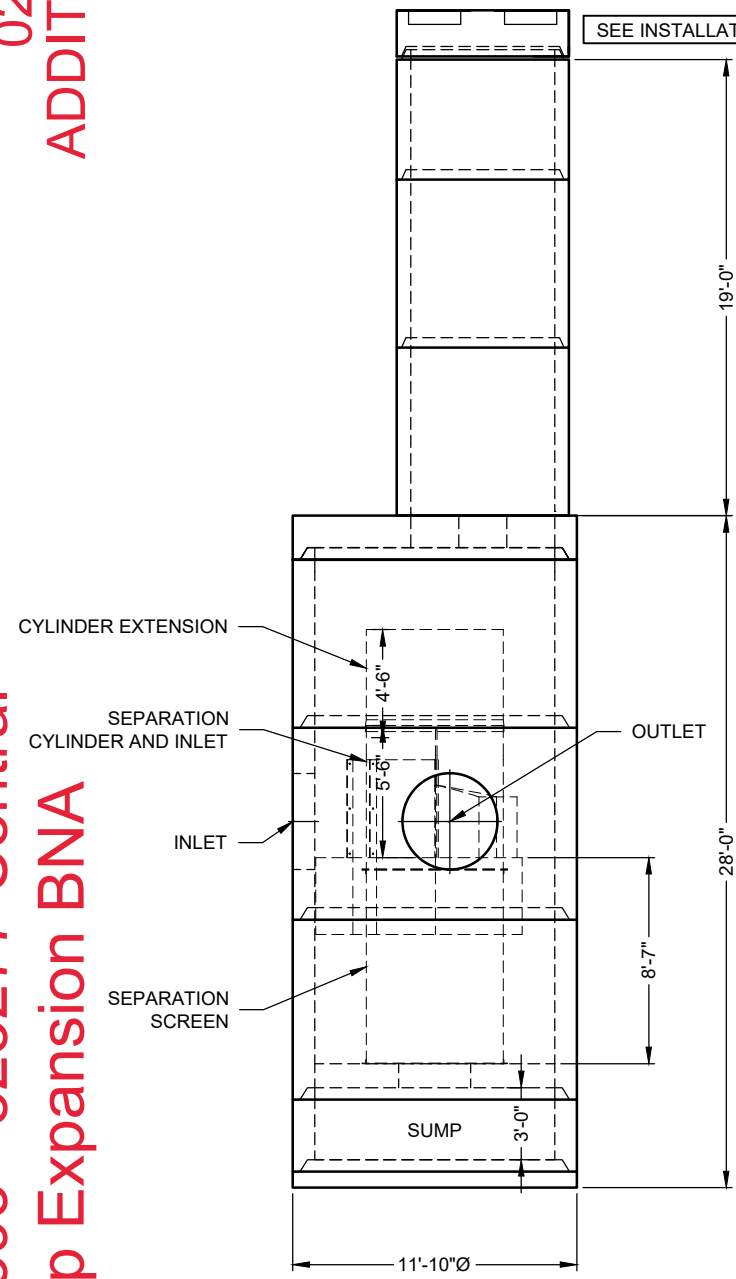
**025-CDS5678-10-C ADDITIONAL INFORMATION**



**PLAN VIEW**  
INTERNALS NOT SHOWN

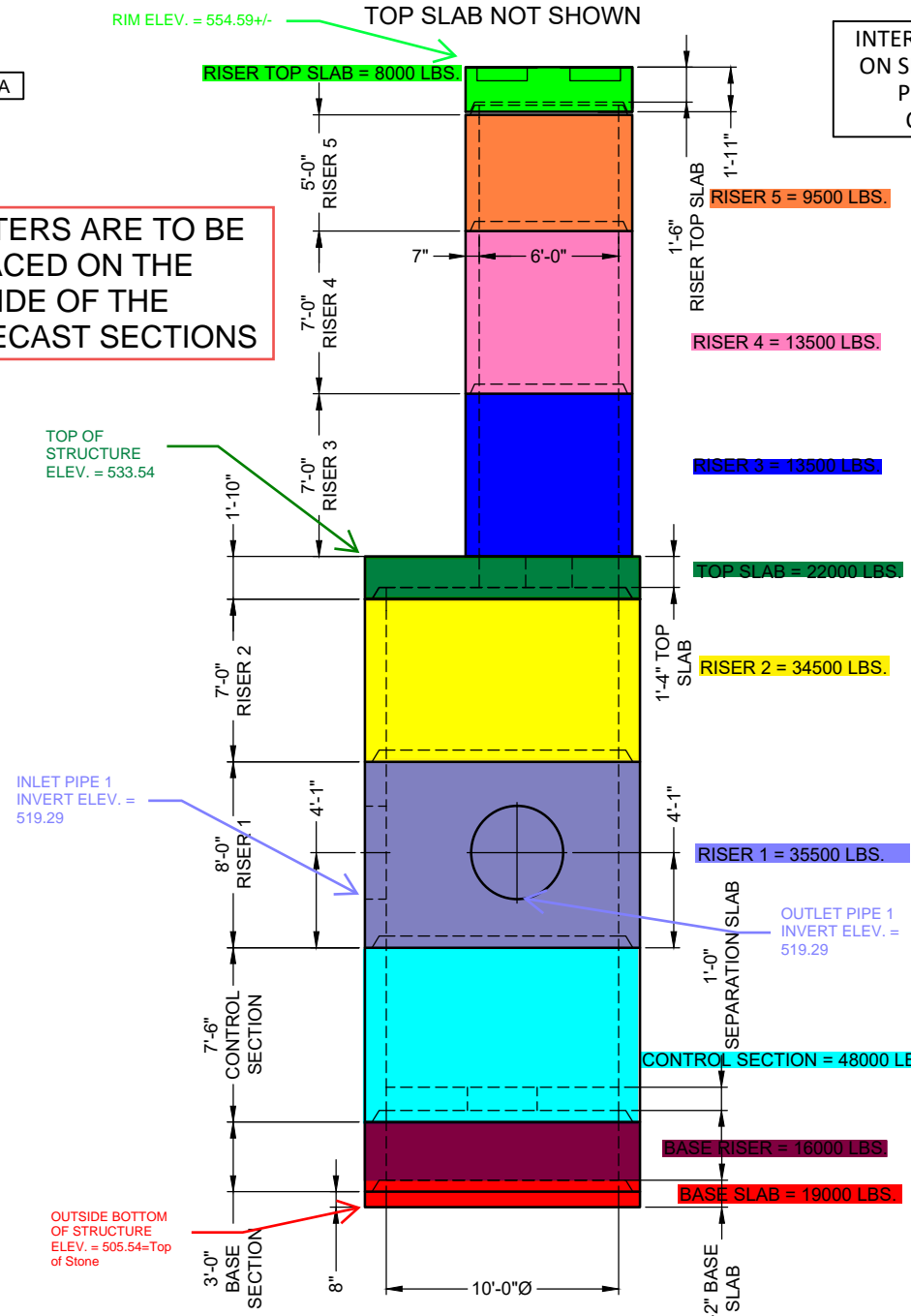


**PLAN VIEW FOR PIPE ORIENTATION**  
TOP SLAB NOT SHOWN



**ELEVATION VIEW**

**LIFTERS ARE TO BE PLACED ON THE INSIDE OF THE PRECAST SECTIONS**



**PRECAST COMPONENTS**  
INTERNALS NOT SHOWN

**INTERNAL COMPONENTS TO BE INSTALLED ON SITE BY CONTECH FIELD CONSULTANT. PRECASTER TO SHIP ALL INTERNAL COMPONENTS WITH STRUCTURE**

**MATERIAL LIST**

COUNT	DESCRIPTION	PART NUMBER	PROVIDED BY	INSTALLED BY
1	5678-10 CONCENTRIC FIBERGLASS INSERT	325-001627	CONTECH	CONTRACTOR
1	5678, 2400 micron, 5.71' O.D. x 8.08' SCREEN, GREEN FLANGE UP	335-000398	CONTECH	CONTRACTOR
1	56 SERIES HARDWARE KIT	325-003922	CONTECH	CONTRACTOR
1	56 SERIES, 4 FT. TALL CYLINDER EXTENSION	325-000823	CONTECH	CONTRACTOR
1	SEALANT FOR JOINTS		PRECASTER	CONTRACTOR
2	24"Ø FRAME AND COVER, EJ#00190522B01	SNOWFLAKE	CONTECH	PRECASTER
1	6"Ø RISER		PRECASTER	CONTRACTOR

**GENERAL NOTES**

- DESIGN LOADING - AASHTO AIRPORT LOAD RATING (80KIP WHEEL LOADS WITH TIRE FOOTPRINT OF 17.16"x12.68")
- ALL PRECAST CONCRETE MANUFACTURED PARTS SHALL CONFORM TO ASTM C-478, WITH MINIMUM CONCRETE STRENGTH OF 7000 PSI AT 28 DAYS
- JOINT SEALANT SHALL CONFORM TO ASTM C-990 OR ASTM C-443
- GROUND WATER ASSUMED AT OUTLET INVERT
- MANUFACTURING TOLERANCE = +/- 1/2-INCH
- SOME HIDDEN LINES MAY BE OMITTED FOR CLARITY

**INSTALLATION NOTES**

- PRECASTER TO CAST ACCESS FRAME INTO TOP SLAB AND SHIP COVER WITH STRUCTURE
- REFER TO CONTECH ASSEMBLY INSTRUCTIONS FOR ADDITIONAL INFORMATION
- FOR PROPER SCREEN ORIENTATION, FLANGE IS COLOR CODED, INSTALL GREEN FLANGE UP
- IF REQUIRED, PVC HYDRAULIC SHEAR PLATE IS PLACED ON SEPARATION SLAB AT BOTTOM OF SCREEN CYLINDER
- PRECASTER TO INSTALL INTERNAL COMPONENTS PRIOR TO SHIPPING UNLESS INSTRUCTED OTHERWISE BY CONTECH
- PIPE OPENINGS SHALL BE STENCILED "INLET" OR "OUTLET" AS APPROPRIATE
- APPLYING ALIGNMENT MARKS ON ALL PIECES OF MULTIPLE ASSEMBLIES IS HIGHLY ENCOURAGED
- IF STRUCTURE IS DELIVERED IN MULTIPLE SECTIONS, EACH PIECE SHALL BE LABELED WITH THE CONTECH PROJECT NUMBER, SEQUENCE NUMBER AND SITE DESIGNATION

**SITE INFORMATION**

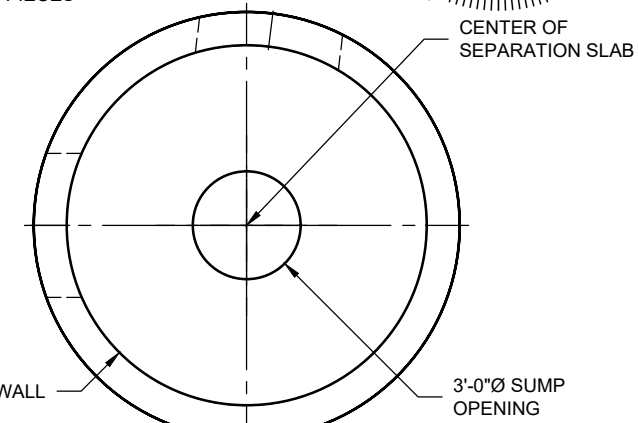
RIM ELEV. = 554.59+/-  
TOP OF STRUCTURE ELEV. = 533.54  
INLET PIPE 1 INVERT ELEV. = 519.29  
OUTLET PIPE 1 DIAMETER AND MATERIAL = 36" RCP  
OUTLET PIPE 1 INVERT ELEV. = 519.29  
OUTLET PIPE 1 DIAMETER AND MATERIAL = 36" RCP  
OUTSIDE BOTTOM OF STRUCTURE ELEV. = 505.54

**STRUCTURE WEIGHT**

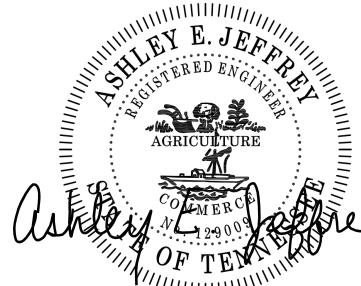
APPROXIMATE HEAVIEST PICK = 48000 LBS.  
STRUCTURE IS DELIVERED IN 10 PIECES

- TOP SLAB = 22000 LBS.
- RISER 2 = 34500 LBS.
- RISER 1 = 35500 LBS.
- CONTROL SECTION = 48000 LBS.
- BASE RISER = 16000 LBS.
- BASE SLAB = 19000 LBS.
- RISER TOP SLAB = 8000 LBS.
- RISER 3 = 13500 LBS.
- RISER 4 = 13500 LBS.
- RISER 5 = 9500 LBS.

CONTECH  
**FABRICATION**  
DRAWING



**SEPARATION SLAB**



The design and information shown on this drawing is the property of CONTECH Engineered Solutions LLC. It is to be used only for the project and site conditions for which it was prepared. It is not to be used for any other project, nor any part thereof, without the written consent of CONTECH. Failure to comply with these conditions shall constitute an acceptance of the user's own risk and CONTECH expressly disclaims any liability or responsibility for such use. If discrepancies between the supplied information upon which the drawing is based and actual field conditions are encountered as site work progresses, these shall be immediately reported to the design engineer. CONTECH shall not be held responsible for any delays or costs incurred by the user for re-evaluation of the design. CONTECH accepts no liability for designs based on missing, incomplete or inaccurate information supplied by others.

MARK	DATE	CHANGE INLET / OUTLET ANGLE	REVISION DESCRIPTION
1	11/17/25		

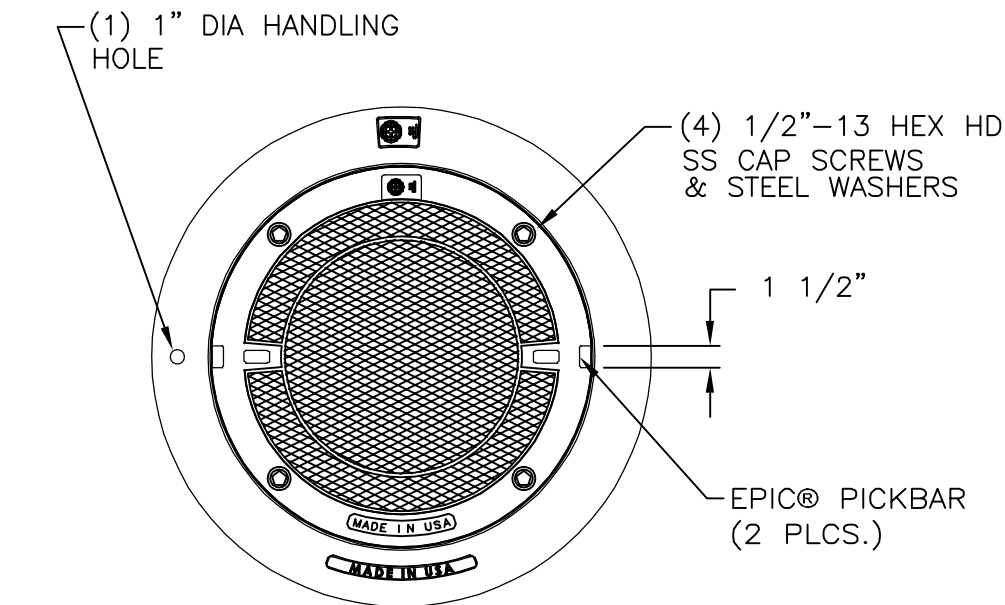
CDS5678-10-C - 823277-025  
CENTRAL RAMP EXPANSION PACKAGE 2  
NASHVILLE, TN  
SITE DESIGNATION: HS-GP (1)

**CONTECH**  
ENGINEERED SOLUTIONS LLC  
www.conteches.com  
2528 Ridge Road, Florence, MD 21036  
410-740-9490 410-740-3682 FAX  
443-457-1500

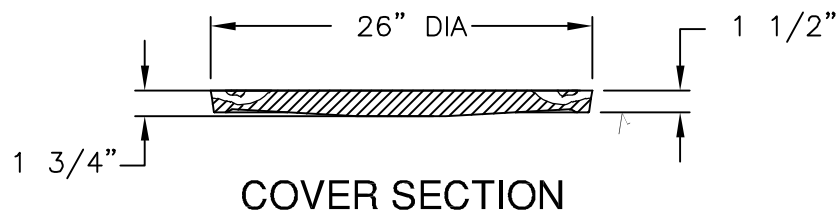
DESIGNED: MJS	DRAWN: BEC
CHECKED: MJS	APPROVED: MJS
PROJECT No.: 823277	SEQUENCE No.: 025
SHEET: 1	OF 2

ICAST  
5888 / 757440  
LAYOUT 1G  
83.23 TS  
17.41 TR

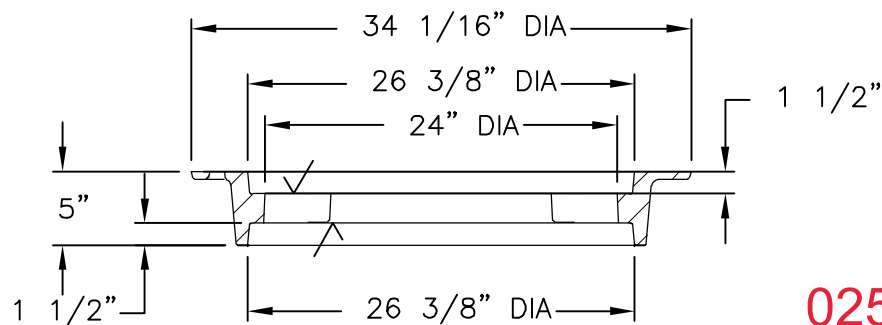
# 25-4593 - 823277 Central Ramp Expansion BNA 2450ZPT 1905APT DI Assembly



PLAN VIEW



COVER SECTION



FRAME SECTION

## Product Number

00190522B01

## Design Features

### -Materials

- Frame  
Gray Iron (CL35B)
- Cover  
Ductile Iron (70-50-05)

### -Load Rating

Airport Extra Heavy Duty

### -Open Area

n/a

### -Coating

Undipped

-√ Designates Machined Surface

## Certification

- ASTM A48
- ASTM A536
- Country of Origin: USA

## Major Components

00245013  
00190522

## Drawing Revision

5/20/2020 Designer: MAH  
6/11/2024 Revised By: MAH

## Disclaimer

Weights (lbs./kg) dimensions (inches/mm) and drawings provided for your guidance. We reserve the right to modify specifications without prior notice.

CONFIDENTIAL: This drawing is the property of EJ GROUP, Inc., and embodies confidential information, registered marks, patents, trade secret information, and/or know how that is the property of EJ GROUP, Inc. Copyright © 2012 EJ GROUP, Inc. All rights reserved.

## Contact

800 626 4653  
ejco.com

025-CDS5678-10-C  
ADDITIONAL INFORMATION