

Job Name: 25-4593 - 823277 Central Ramp Expansion BNA
 Job Location: Nashville, TN
 Contractor: Contech Engineering Solutions

Plant: Beaver Dam, KY
 12/2/2025 11:09:20 AM

Tech: J. Coppage
 PC: T. Sekula



Structure ID: 025-CDS5678-10-C

P10 MH072LD25SP

MH FLAT TOP SPEC. (2 - 24"Ø HOLES)

- P11) 24" - CASTING HEIGHT - 0"
- P10) 72" - MH FLAT TOP SPEC. (2 - 24"Ø HOLES) - 25"
- P9) 72" - MH RISER - 60"
- P8) 72" - MH RISER - 84"
- P7) 72" - MH RISER - 84"
- P6) 120" - MH Transition Slab 72" Spec. w/(2) 24" Holes - 22"
- P5) 120" - MH RISER - 84"
- P4) 120" - MH RISER - 96"
- P3) 120" - MH RISER Custom Ht - 90"
- P2) 120" - MH RISER - 36"
- P1) 120" - MH SEPARATE BASE-T (142" OD) - 8"
- 1) CVSTENCILING
- 1) This Structure Includes a Cast-in Item - (2 Ea. Castings)
- 1) SECONDARY POUR - Separation Slab*
- 5) 120" - Conseal CS-102 1.00"
- 4) 72" - Conseal CS-102 1.00"
- 2) Hole - 48

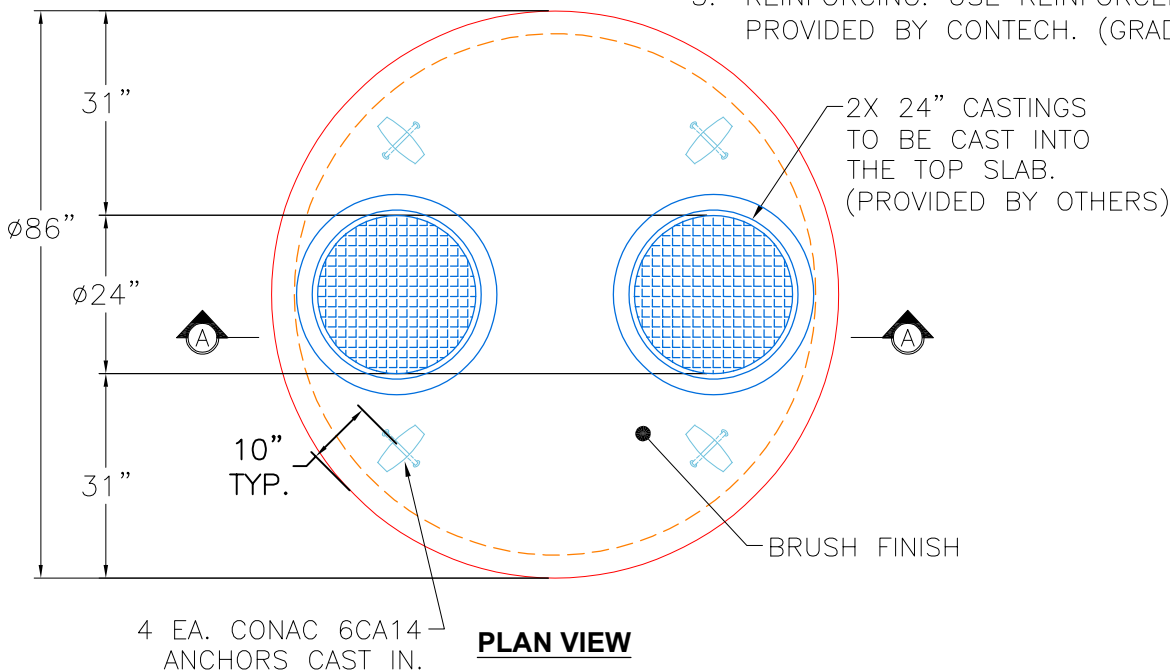
****USE REINFORCEMENT
 INFORMATION PROVIDED
 BY CONTECH****

- 0 lb Structure Notes:
- 7788 lb 1. PER ASTM C-478 SPECS
 - 8747 lb 2. CONCRETE: 7,000 PSI AT 28 DAYS
 - 12246 lb 3. REINFORCEMENT: PER ASTM A615 (GRADE 60)
 - 12246 lb 4. 2 EA. CAST-IN CASTINGS PROVIDED BY OTHERS
 - 22335 lb 5. CASTINGS TO BE CAST INTO FLAT LID FLANGE
 - 31909 lb SIDE UP
 - 33046 lb
 - 34189 lb
 - 13675 lb SPECIAL NOTES:
 - 17421 lb 1. LIFTING HOOKS TO BE INSTALLED ON
 - 0 lb THE INSIDE OF THE STRUCTURE
 - 0 lb 2. CONTECH'S LOGO AS WELL AS INLET & OUTLET
 - 10292 lb MUST BE STENCILED ONTO STRUCTURE
 - 0 lb 3. INTERNALS TO BE INSTALLED BY OTHERS
 - 0 lb
 - 0 lb

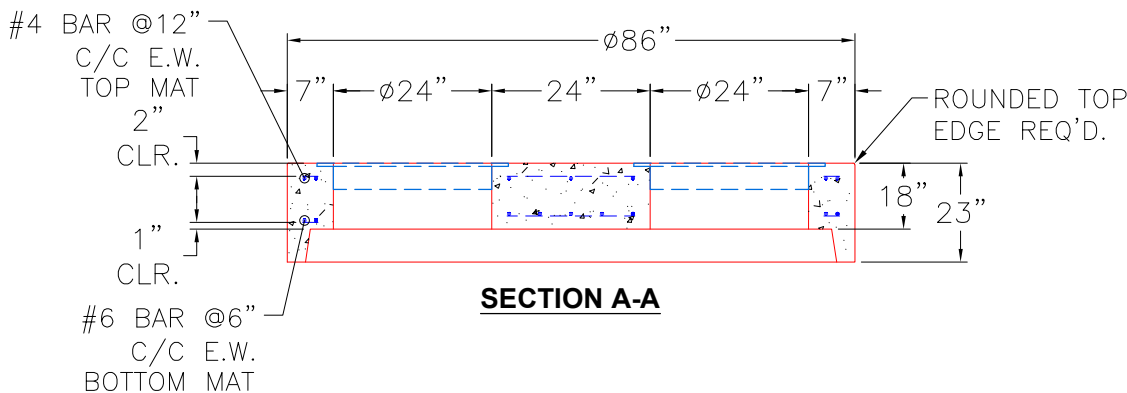
Structure Total: 204714 lb

GENERAL NOTES:

1. MANUFACTURED TO ASTM C-478 (LATEST REVISION).
2. CONCRETE 7,000 PSI AT 28 DAYS.
3. REINFORCING: USE REINFORCEMENT INFORMATION PROVIDED BY CONTECH. (GRADE 60KSI).



PLAN VIEW



SECTION A-A

Coating (Int): Coating (Ext):	Seam Up: Flat Seam Dn: Groove	Wall Thickness: 7"	Height (Ext): 25"	Weight (Net): 7788 lb Volume (Net): 1.9cu.yd
----------------------------------	----------------------------------	--------------------	-------------------	---

25-4593 TOP SLAB REINFORCEMENT 025-CDS5678-10-C

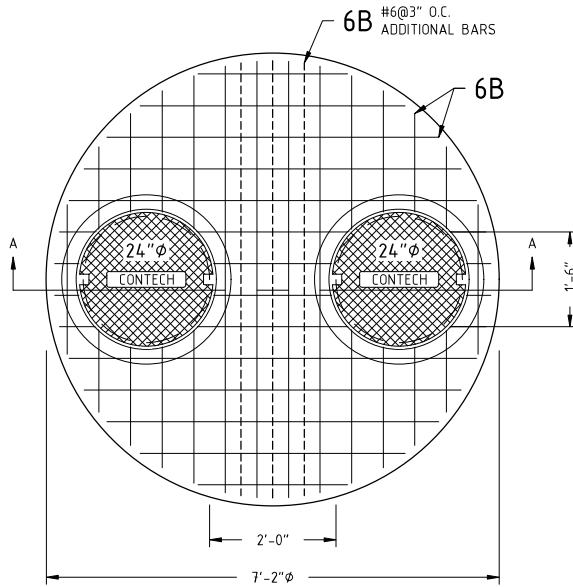
DESIGN NOTE:

AIRCRAFT LOADING - 80 KIP WHEEL LOAD - 17.19"x12.68" TIRE FOOTPRINT
 WATER TABLE AT FINISHED GRADE
 DESIGN CONFORMS TO AASHTO LRFD
 CONCRETE 28 DAY COMPRESSIVE STRENGTH - 7000 PSI
 REINFORCEMENT STEEL - 60,000 PSI
 REBAR MIN SPLICE LENGTHS: #3-17" #4-22" #5-28" #6-33"
 REBAR MIN BEND DIAMETERS: #3-2.25" #4-3" #5-3.75" #6-4.5"
 PLACE 4-#4 BAR DIAGONAL AROUND OPENING(S)

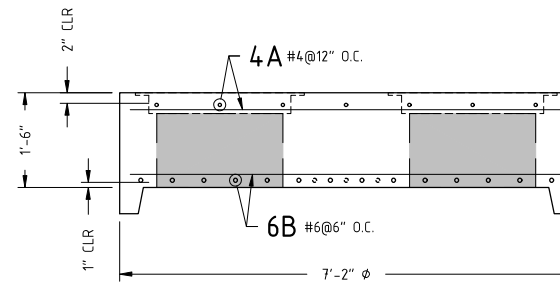
823277-25

REINFORCING STEEL SCHEDULE

MARK	NO.	LENGTH	TYPE	BENDING DIAGRAM O.D.
4A	14	6'-11" MAX	STR.	
6B	31	6'-11" MAX	STR.	



PLAN VIEW
(BOTTOM MAT SHOWN)



SECTION A-A



PROPRIETARY AND CONFIDENTIAL:
 THE INFORMATION CONTAINED IN THIS DOCUMENT IS THE SOLE PROPERTY OF CONTECH. ANY REPRODUCTION IN PART OR AS A WHOLE WITHOUT THE WRITTEN PERMISSION OF CONTECH IS PROHIBITED.

REVISIONS	
B	
C	
D	
E	

DRAWN BY: T.J.G.
 DESIGN BY: A.JEFFREY
 PLANT:
 SCALE: 1/2" = 1'

CONTECH - CDS TOPSLAB
 6'-0" Ø
 REINFORCEMENT

DATE: 10/21/25 11"x17" PAGE 1 OF 1