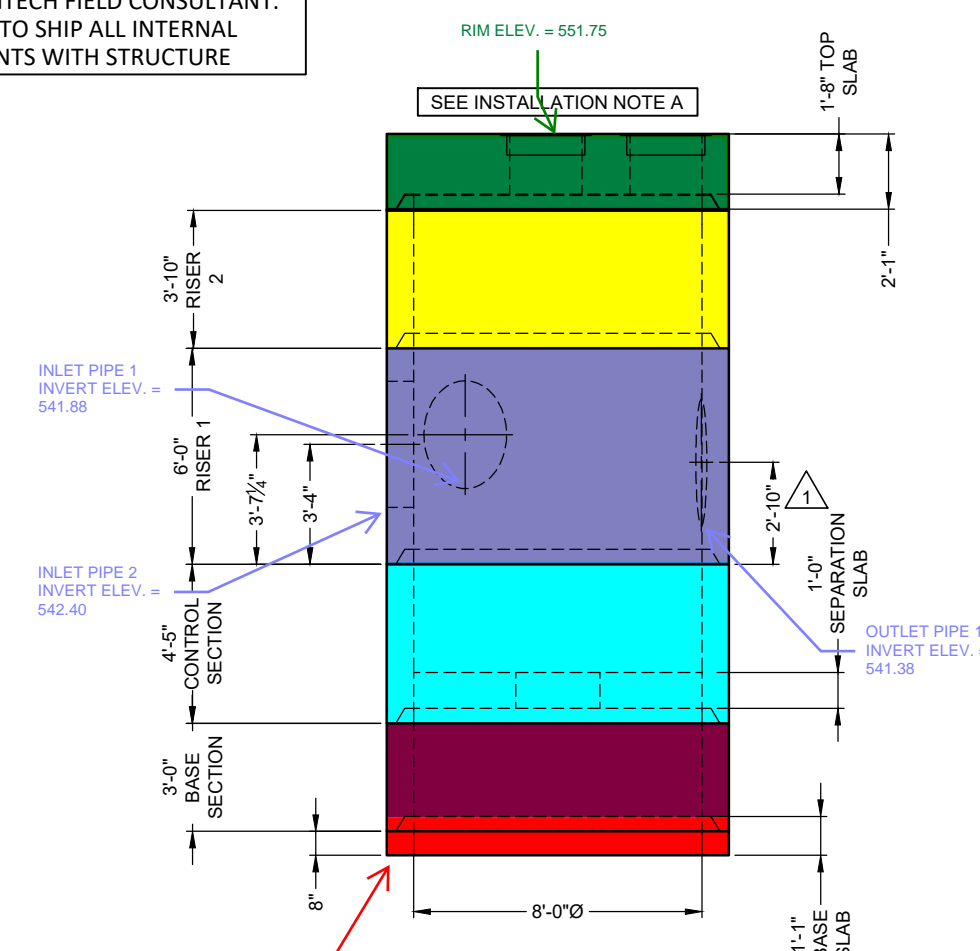
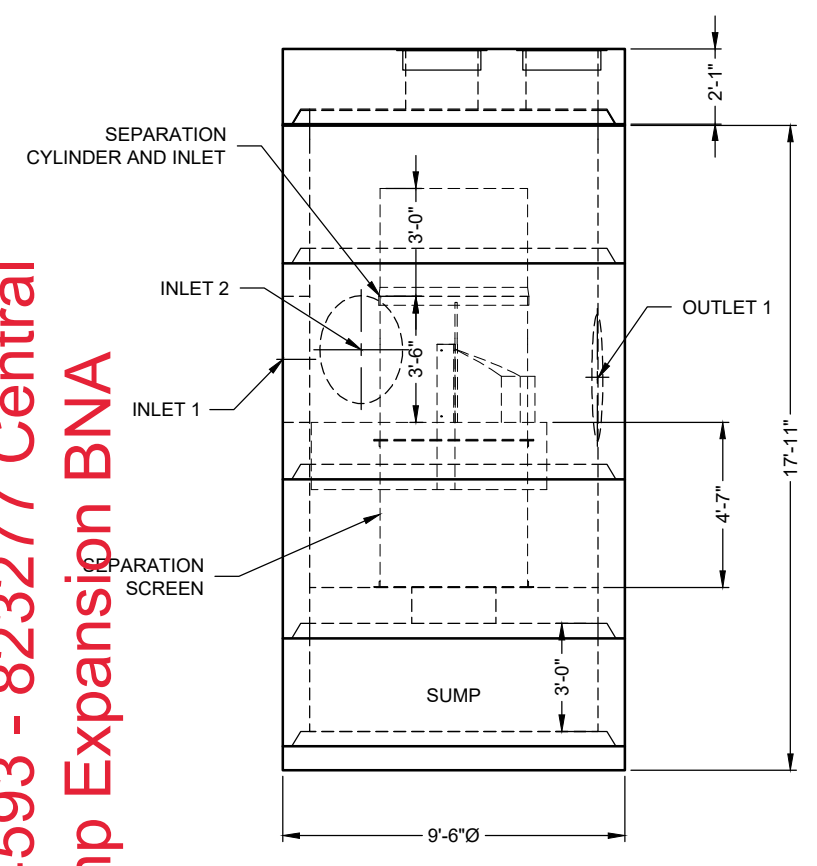
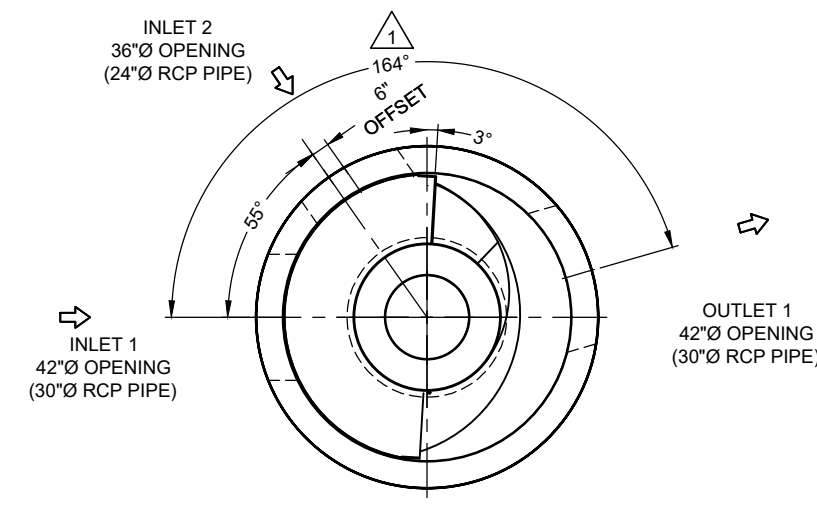
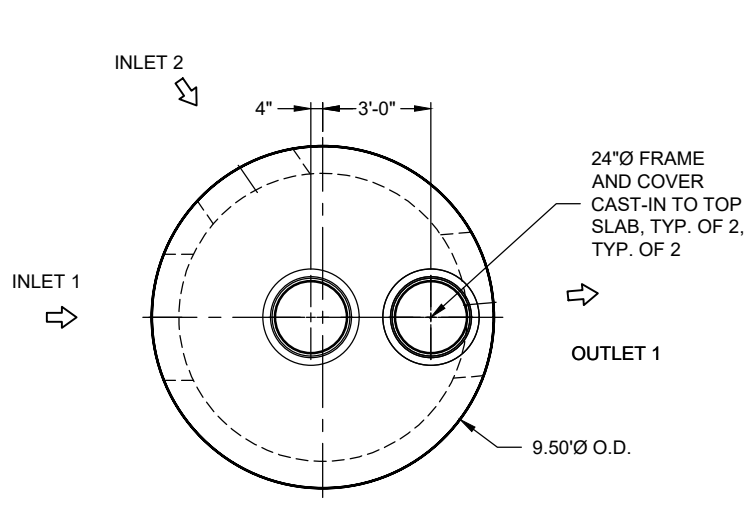


I:\QUIKRITE\NETCONTECH\HMER\PROJECTS\20-083277\20-CDS\DRAWINGS\823277-20-CDS\4040-8-C-CONFAB.DWG 11/19/2025 1:00 PM

020-CDS4040-8-C
25-4593 - 823277 Central
Ramp Expansion BNA
ADDITIONAL INFORMATION



MATERIAL LIST

COUNT	DESCRIPTION	PART NUMBER	PROVIDED BY	INSTALLED BY
1	4040-8 CONCENTRIC FIBERGLASS INSERT	325-000794	CONTECH	CONTRACTOR
1	4040, 2400 micron, 4.1' O.D. x 4.08' SCREEN, GREEN FLANGE UP	335-000388	CONTECH	CONTRACTOR
1	20, 30, 40 SERIES HARDWARE KIT	325-003921	CONTECH	CONTRACTOR
1	40 SERIES, 3 FT. TALL CYLINDER EXTENSION	325-002784	CONTECH	CONTRACTOR
1	SEALANT FOR JOINTS		PRECASTER	CONTRACTOR
2	24"Ø FRAME AND COVER, EJ# 00190522B01, CAST-IN	SNOWFLAKE	CONTECH	PRECASTER

- GENERAL NOTES**
- DESIGN LOADING - AASHTO AIRPORT LOAD RATING (80KIP WHEEL LOADS WITH TIRE FOOTPRINT OF 17.19"x12.68")
 - ALL PRECAST CONCRETE MANUFACTURED PARTS SHALL CONFORM TO ASTM C-478, WITH MINIMUM CONCRETE STRENGTH OF 7000 PSI AT 28 DAYS
 - JOINT SEALANT SHALL CONFORM TO ASTM C-990 OR ASTM C-443
 - GROUND WATER ASSUMED AT OUTLET INVERT
 - MANUFACTURING TOLERANCE = +/- 1/2-INCH
 - SOME HIDDEN LINES MAY BE OMITTED FOR CLARITY

- INSTALLATION NOTES**
- PRECASTER TO CAST ACCESS FRAME INTO TOP SLAB AND SHIP COVER WITH STRUCTURE
 - REFER TO CONTECH ASSEMBLY INSTRUCTIONS FOR ADDITIONAL INFORMATION
 - FOR PROPER SCREEN ORIENTATION, FLANGE IS COLOR CODED, INSTALL GREEN FLANGE UP
 - IF REQUIRED, PVC HYDRAULIC SHEAR PLATE IS PLACED ON SEPARATION SLAB AT BOTTOM OF SCREEN CYLINDER
 - PRECASTER TO INSTALL INTERNAL COMPONENTS PRIOR TO SHIPPING UNLESS INSTRUCTED OTHERWISE BY CONTECH
 - PIPE OPENINGS SHALL BE STENCILED "INLET" OR "OUTLET" AS APPROPRIATE
 - APPLYING ALIGNMENT MARKS ON ALL PIECES OF MULTIPLE ASSEMBLIES IS HIGHLY ENCOURAGED
 - IF STRUCTURE IS DELIVERED IN MULTIPLE SECTIONS, EACH PIECE SHALL BE LABELED WITH THE CONTECH PROJECT NUMBER, SEQUENCE NUMBER AND SITE DESIGNATION

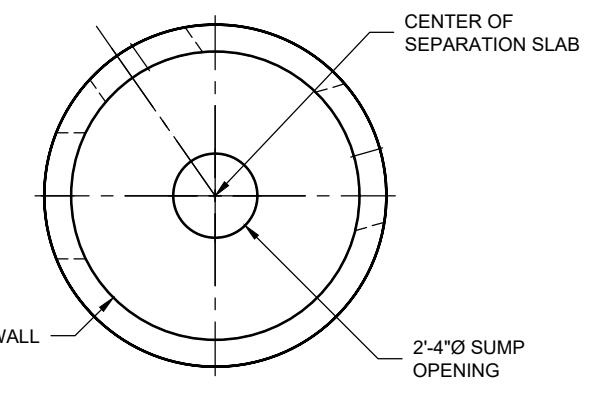
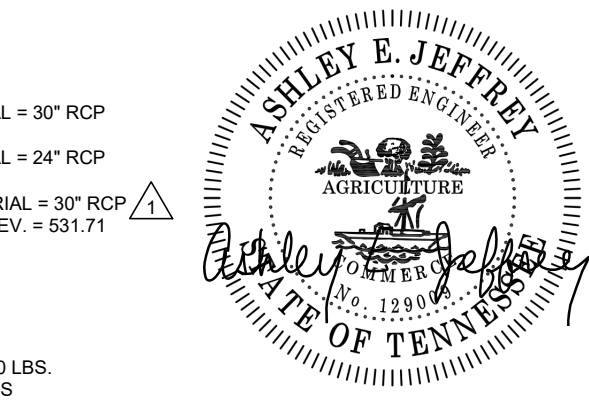
SITE INFORMATION

RIM ELEV. = 551.75+/-
 TOP OF STRUCTURE ELEV. = 551.75
 INLET PIPE 1 INVERT ELEV. = 541.88
 INLET PIPE 1 DIAMETER AND MATERIAL = 30" RCP
 INLET PIPE 2 INVERT ELEV. = 542.40
 INLET PIPE 2 DIAMETER AND MATERIAL = 24" RCP
 OUTLET PIPE 1 INVERT ELEV. = 541.38
 OUTLET PIPE 1 DIAMETER AND MATERIAL = 30" RCP
 OUTSIDE BOTTOM OF STRUCTURE ELEV. = 531.71

STRUCTURE WEIGHT

APPROXIMATE HEAVIEST PICK = 21000 LBS.
 STRUCTURE IS DELIVERED IN 6 PIECES

- TOP SLAB = 18000 LBS.
- RISER 2 = 12500 LBS.
- RISER 1 = 16000
- CONTROL RISER = 21000 LBS.
- BASE RISER = 10500 LBS.
- BASE SLAB = 11500 LBS.



CONTECH
FABRICATION
DRAWING

ICAST
5888 / 757440
LAYOUT 1G
42.20 TS

The design and information shown on this drawing is the property of CONTECH Engineered Solutions LLC. It is to be used only for the project and site conditions for which it was prepared. No part of this drawing, nor any part thereof, may be used, copied, reproduced, or transmitted in any form or by any means, electronic, mechanical, photocopying, recording, or by any information storage and retrieval system, without the prior written consent of CONTECH. Failure to comply with these terms and conditions shall constitute a breach of contract and CONTECH expressly disclaims any liability or responsibility for such use.

If discrepancies between the supplied information upon which the drawing is based and actual field conditions are encountered as site work progresses, these are to be immediately reported to the design engineer. CONTECH shall not be responsible for re-evaluation of the design. CONTECH accepts no liability for designs based on missing, incomplete or inaccurate information supplied by others.

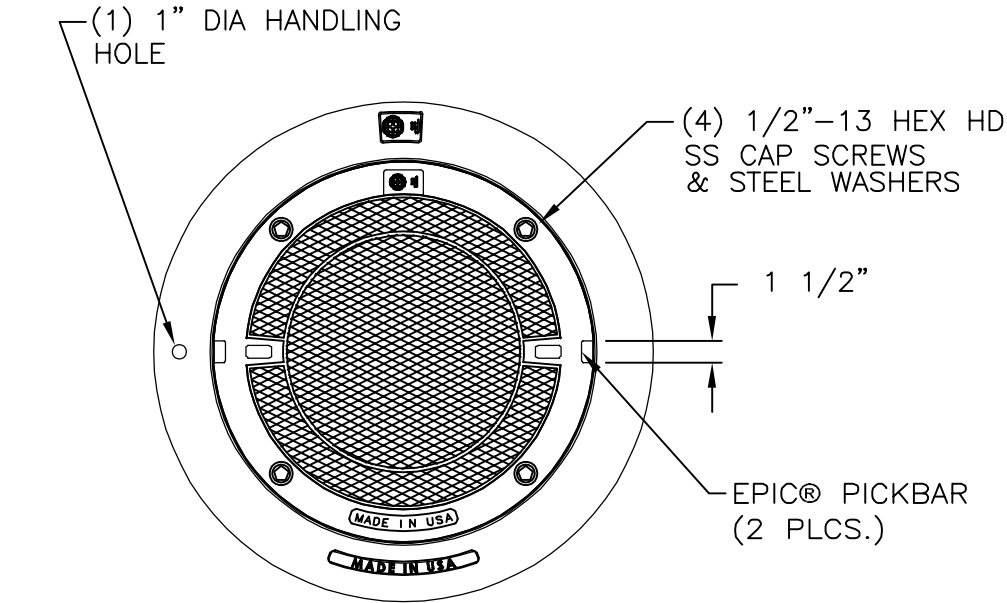
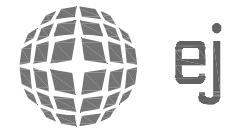
MARK	DATE	REVISION DESCRIPTION	BY
1	11/10/25	OUTLET PIPE DIAMETER, CASTING	DWB

CDS4040-8-C - 823277-020
 CENTRAL RAMP EXPANSION PACKAGE
 2
 NASHVILLE, TN
 SITE DESIGNATION: HS-DE

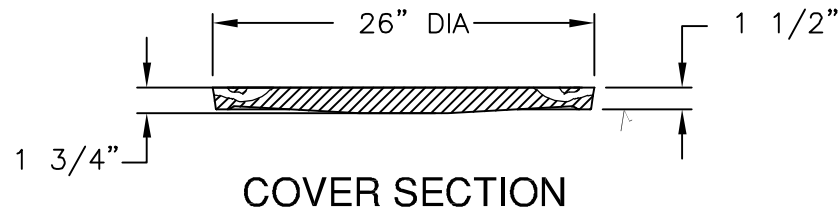
CONTECH
ENGINEERED SOLUTIONS LLC
www.conteches.com
7531 Ridge Road, Florence, MD 21036
410-740-5490 410-740-3482 FAX
443-457-1500

DATE: 6/18/25
 DESIGNED: MJS
 DRAWN: DWB
 CHECKED: MJS
 APPROVED: MJS
 PROJECT No.: 823277
 SEQUENCE No.: 020
 SHEET: 1 OF 2

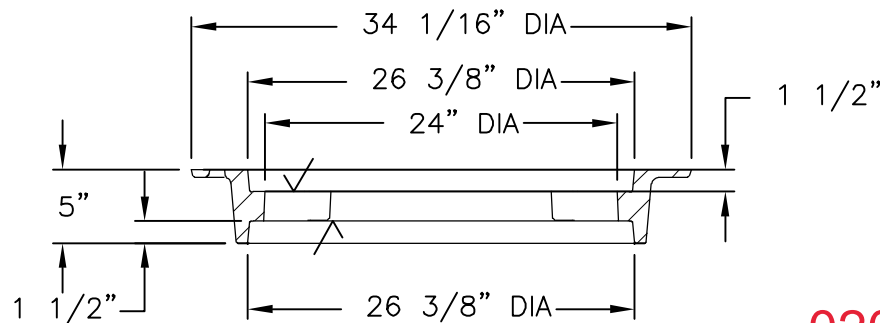
25-4593 - 823277 Central Ramp Expansion BNA 2450ZPT 1905APT DI Assembly



PLAN VIEW



COVER SECTION



FRAME SECTION

**020-CDS4040-8-C
ADDITIONAL INFORMATION**

Product Number

00190522B01

Design Features

- Materials
 - Frame
Gray Iron (CL35B)
 - Cover
Ductile Iron (70-50-05)
- Load Rating
Airport Extra Heavy Duty
- Open Area
n/a
- Coating
Undipped
- √ Designates Machined Surface

Certification

- ASTM A48
- ASTM A536
- Country of Origin: USA

Major Components

00245013
00190522

Drawing Revision

5/20/2020 Designer: MAH
6/11/2024 Revised By: MAH

Disclaimer

Weights (lbs./kg) dimensions (inches/mm) and drawings provided for your guidance. We reserve the right to modify specifications without prior notice.

CONFIDENTIAL: This drawing is the property of EJ GROUP, Inc., and embodies confidential information, registered marks, patents, trade secret information, and/or know how that is the property of EJ GROUP, Inc. Copyright © 2012 EJ GROUP, Inc. All rights reserved.

Contact

800 626 4653
ejco.com