

Job Name: 25-4593 - 823277 Central Ramp Expansion BNA  
 Job Location: Nashville, TN  
 Contractor: Contech Engineering Solutions

Plant: Beaver Dam, KY  
 12/2/2025 11:09:43 AM

Tech: J. Coppage  
 PC: T. Sekula



**Structure ID: 020-CDS4040-8-C**

**P2 MH096RS36**

**MH RISER**

- P7) 24" - CASTING HEIGHT - 0"
- P6) 96" - MH FLAT TOP SPEC. (2 - 24"Ø F&G) - 25"
- P5) 96" - MH RISER Custom Ht - 46"
- P4) 96" - MH RISER - 72"
- P3) 96" - MH RISER Custom Ht - 53"
- P2) 96" - MH RISER - 36"
- P1) 96" - MH SEPARATE BASE-T (114" OD) - 8"
- 1) CVSTENCILING
- 1) This Structure Includes a Cast-in Item - (2 Ea. Castings)
- 1) SECONDARY POUR - Separation Slab\*
- 5) 96" - Conseal CS-102 1.00"
- 2) Hole - 42
- 1) Hole - 36

**\*\*USE REINFORCEMENT INFORMATION PROVIDED BY CONTECH\*\***

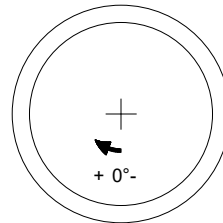
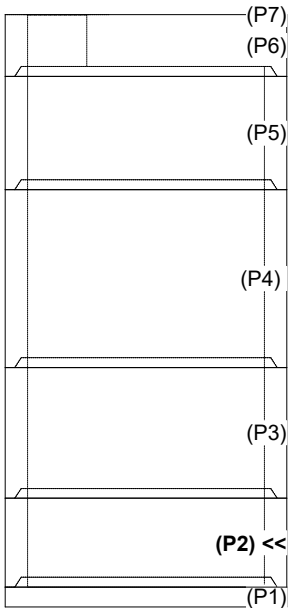
- |  |  |
|--|--|
| <ul style="list-style-type: none"> <li>0 lb</li> <li>14787 lb</li> <li>11459 lb</li> <li>14991 lb</li> <li>13203 lb</li> <li>8968 lb</li> <li>10484 lb</li> <li>0 lb</li> <li>0 lb</li> <li>6669 lb</li> <li>0 lb</li> <li>0 lb</li> <li>0 lb</li> </ul> | <p><b>Structure Notes:</b></p> <ol style="list-style-type: none"> <li>1. PER ASTM C-478 SPECS</li> <li>2. CONCRETE: 7,000 PSI AT 28 DAYS</li> <li>3. REINFORCEMENT: PER ASTM A615 (GRADE 60)</li> <li>4. 2 EA. CAST-IN CASTINGS PROVIDED BY OTHERS</li> <li>5. CASTINGS TO BE CAST INTO FLAT LID FLANGE SIDE UP</li> <li>6. INVERT 2 OFFSET 6" FROM CENTER</li> </ol> <p><b>SPECIAL NOTES:</b></p> <ol style="list-style-type: none"> <li>1. LIFTING HOOKS TO BE INSTALLED ON THE INSIDE OF THE STRUCTURE</li> <li>2. CONTECH'S LOGO AS WELL AS INLET &amp; OUTLET MUST BE STENCILED ONTO STRUCTURE</li> <li>3. INTERNALS TO BE INSTALLED BY OTHERS</li> </ol> |
|--|--|

Structure Total: 80562 lb

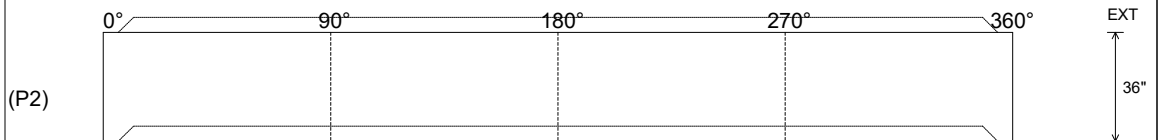
Rim: 551.75' Rim to Invert: 10.37' Slack: 0.44" Sump: 108" Step Position:

Position	Elev	Angle	Ext. (cw)	Pipe	Pipe OD	Connector	Hole	Horz Size	Up (L)	Offset
Invert 1										
Invert 2										
Invert 3										
Invert 4										
Invert 5										
Invert 6										
Invert 7										
Invert 8										

**RIGHT-SIDE UP VIEW (int. dimensions)**



**INSIDE WALL DIMENSIONS**



Coating (Int): Coating (Ext):	Seam Up: Tongue Seam Dn: Groove	Wall Thickness: 9" Floor Height: 0"	Height (Int): 36" Height (Ext): 36"	Weight (Net): 8968 lb Volume (Net): 2.29cu.yd
----------------------------------	------------------------------------	--	--	--

# 25-4593 RISER REINFORCEMENT 020-CDS4040-8-C

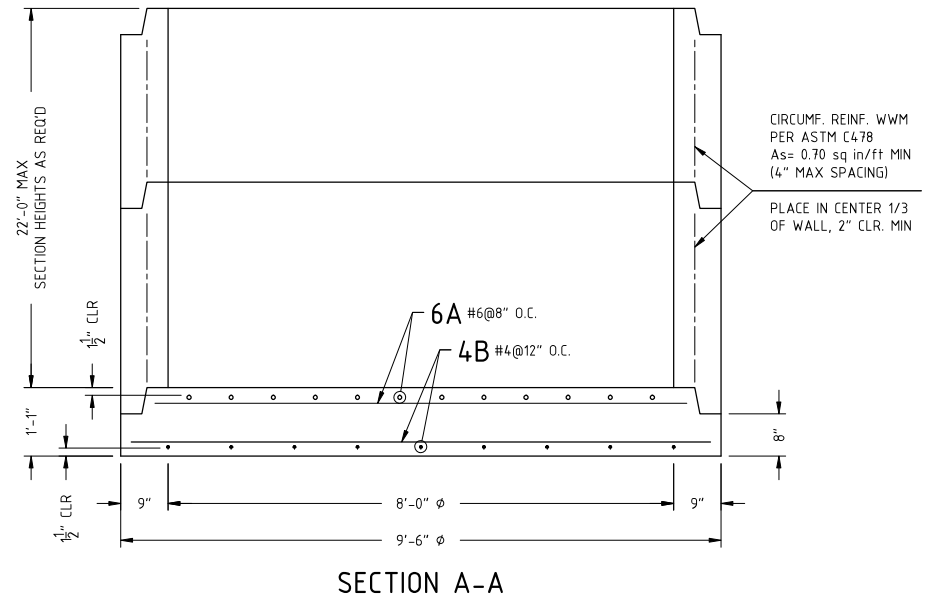
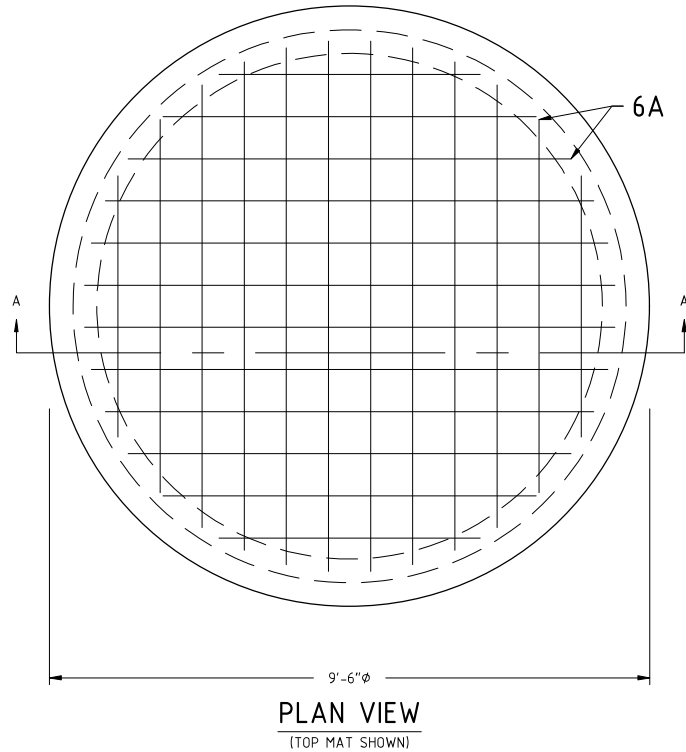
**DESIGN NOTE:**

AIRCRAFT LOADING - 80 KIP WHEEL LOAD - 17.19"x12.68" TIRE FOOTPRINT  
 WATER TABLE AT FINISHED GRADE  
 DESIGN CONFORMS TO AASHTO LRFD  
 CONCRETE 28 DAY COMPRESSIVE STRENGTH - 7000 PSI  
 REINFORCEMENT STEEL - 60,000 PSI  
 REBAR MIN SPLICE LENGTHS: #3-17" #4-22" #5-28" #6-33"  
 REBAR MIN BEND DIAMETERS: #3-2.25" #4-3" #5-3.75" #6-4.5"  
 PLACE 4-#4 BAR DIAGONAL AROUND OPENING(S)

823277-20

**REINFORCING STEEL SCHEDULE**

MARK	NO.	LENGTH	TYPE	BENDING DIAGRAM O.D.
6A	24	8'-5" MAX	STR.	
4B	18	9'-2" MAX	STR.	



PROPRIETARY AND CONFIDENTIAL:  
 THE INFORMATION CONTAINED IN THIS DOCUMENT IS THE SOLE PROPERTY OF CONTECH. ANY REPRODUCTION IN PART OR AS A WHOLE WITHOUT THE WRITTEN PERMISSION OF CONTECH IS PROHIBITED.

REVISIONS	
B	
C	
D	
E	

DRAWN BY: T.J.G  
 DESIGN BY: A.JEFFREY  
 PLANT:  
 SCALE: 1/2" = 1'

CONTECH - CDS BASESLAB  
 8'-0"  $\phi$   
 REINFORCEMENT

DATE: 10/21/25 11"x17" PAGE 1 OF 1