

Job Name: 25-4593 - 823277 Central Ramp Expansion BNA  
 Job Location: Nashville, TN  
 Contractor: Contech Engineering Solutions

Plant: Beaver Dam, KY  
 12/4/2025 1:55:08 PM

Tech: J. Coppage  
 PC: T. Sekula



**Structure ID: 010-CDS5653-10-C**

**P5 MH120LD26SP**

**MH FLAT TOP SPEC. (2 - 24"ø F&G)**

- P6) 24" - CASTING HEIGHT - 0"
- P5) 120" - MH FLAT TOP SPEC. (2 - 24"ø F&G) - 26"
- P4) 120" - MH RISER - 90"
- P3) 120" - MH RISER - 72"
- P2) 120" - MH RISER - 36"
- P1) 120" - MH BASE SLAB - 6"

- 1) CVSTENCILING
- 1) This Structure Includes a Cast-in Item - (2 Ea. Castings)
- 1) SECONDARY POUR - Separation Slab\*
- 4) 120" - Conseal CS-102 1.00"
- 2) Hole - 42

0 lb  
 26247 lb  
 31584 lb  
 27351 lb  
 13675 lb  
 14760 lb  
 0 lb  
 0 lb  
 10363 lb  
 0 lb  
 0 lb  
 -----  
 123980 lb

Structure Total:

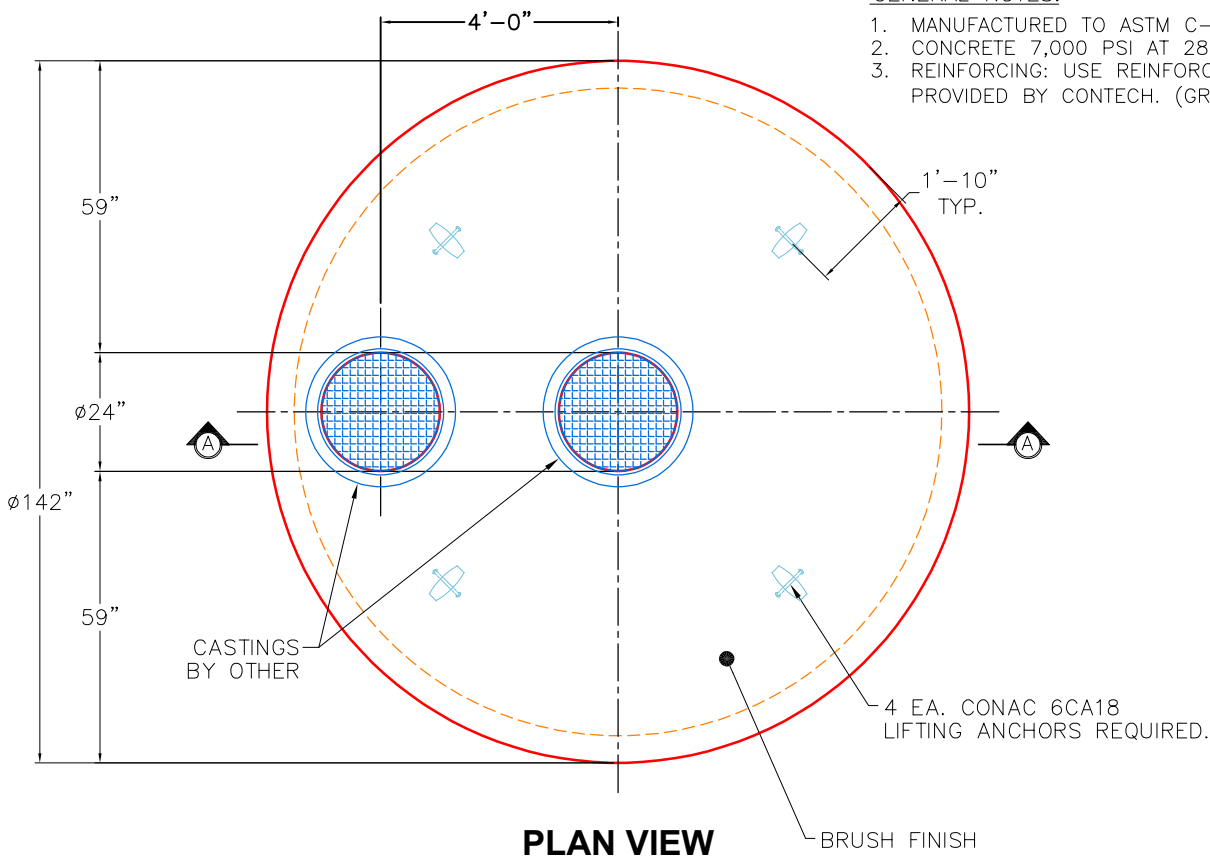
Structure Notes:

1. PER ASTM C-478 SPECS
2. CONCRETE: 7,000 PSI AT 28 DAYS
3. REINFORCEMENT: PER ASTM A615 (GRADE 60)
4. 2 EA. CAST-IN CASTINGS PROVIDED BY OTHERS
5. CASTINGS TO BE CAST INTO FLAT LID FLANGE SIDE UP
6. LIFTING HOOKS TO BE INSTALLED ON THE INSIDE OF THE STRUCTURE
7. CONTECH'S LOGO AS WELL AS INLET AND OUTLET MUST BE STENCILED ONTO STRUCTURE
8. INTERNALS TO BE INSTALLED BY OTHERS

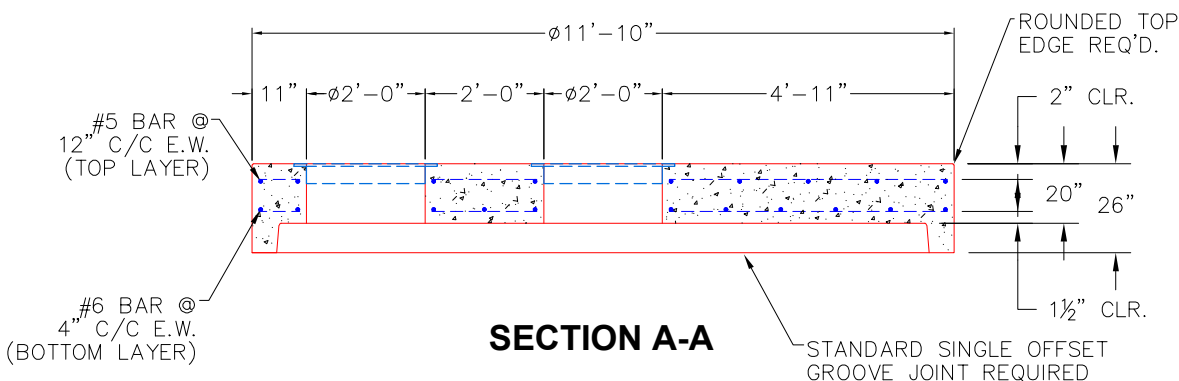
**\*\*USE REINFORCEMENT INFORMATION PROVIDED BY CONTECH\*\***

GENERAL NOTES:

1. MANUFACTURED TO ASTM C-478 (LATEST REVISION).
2. CONCRETE 7,000 PSI AT 28 DAYS.
3. REINFORCING: USE REINFORCEMENT INFORMATION PROVIDED BY CONTECH. (GRADE 60KSI).



**PLAN VIEW**



**SECTION A-A**

Coating (Int):  
 Coating (Ext):

Seam Up: Flat  
 Seam Dn: Groove

Wall Thickness: 11"

Height (Ext): 26"

Weight (Net): 26247 lb  
 Volume (Net): 6.7cu.yd

# 25-4593 TOP SLAB REINFORCEMENT 010-CDS5653-10-C

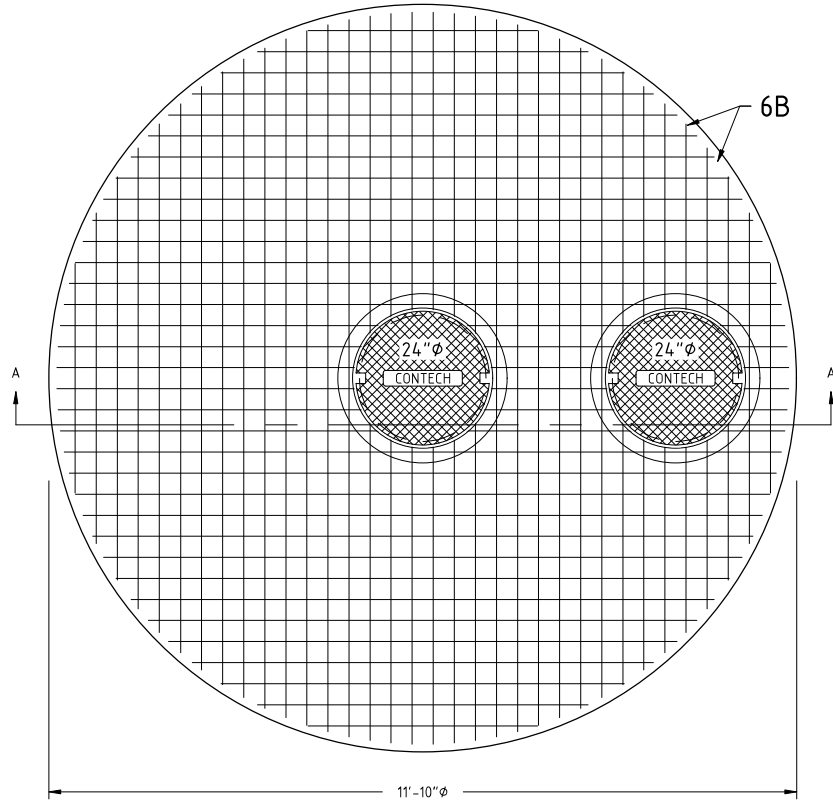
**DESIGN NOTE:**

AIRCRAFT LOADING - 80 KIP WHEEL LOAD - 17.19"x12.68" TIRE FOOTPRINT  
 WATER TABLE AT FINISHED GRADE  
 DESIGN CONFORMS TO AASHTO LRFD  
 CONCRETE 28 DAY COMPRESSIVE STRENGTH - 7000 PSI  
 REINFORCEMENT STEEL - 60,000 PSI  
 REBAR MIN SPLICE LENGTHS: #3-17" #4-22" #5-28" #6-33"  
 REBAR MIN BEND DIAMETERS: #3-2.25" #4-3" #5-3.75" #6-4.5"  
 PLACE 4-#4 BAR DIAGONAL AROUND OPENING(S)

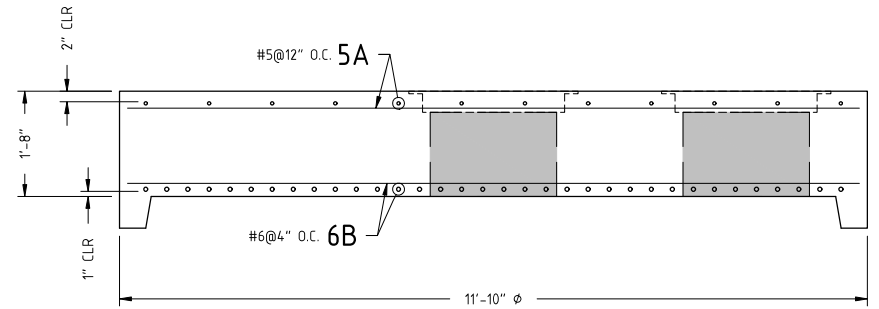
823277-10

**REINFORCING STEEL SCHEDULE**

MARK	NO.	LENGTH	TYPE	BENDING DIAGRAM O.D.
5A	24	11'-7" MAX	STR.	
6B	68	11'-7" MAX	STR.	



**PLAN VIEW**  
(BOTTOM MAT SHOWN)



**SECTION A-A SHIP LOOSE FRAME**



PROPRIETARY AND CONFIDENTIAL:  
 THE INFORMATION CONTAINED IN THIS DOCUMENT IS THE SOLE PROPERTY OF CONTECH. ANY REPRODUCTION IN PART OR AS A WHOLE WITHOUT THE WRITTEN PERMISSION OF CONTECH IS PROHIBITED.

REVISIONS	
B	BOTTOM REBAR MAT SPACING - TJG
C	
D	
E	

DRAWN BY: TJG  
 DESIGN BY: A. JEFFREY  
 PLANT:  
 SCALE: 1/2" = 1'

CONTECH - CDS TOPSLAB 10'-0" Ø REINFORCEMENT
DATE: 10/14/25      11"x17"      PAGE 1 OF 1