

Job Name: 25-4590 Uhlhorn Sewer Repairs  
 Job Location: Evansville, IN  
 Contractor: Bowen Engineering Corporation

Plant: Beaver Dam  
 4/15/2026 8:17:24 AM

Tech: S. Felletter  
 PC: A. Chambers



**Structure ID: 103 (9)**

**P2 MH060TS15X-48EC**

**XYPEX MH FT REDUCER 48" HOLE T/G**

- P7) 24" - CASTING HEIGHT - 7"
- P6) 48" - ECC XYPEX CONE w/ 24" HOLE F/G - 24"
- P5) 48" - MH RISER w/XYPEX T/G - 48"
- P4) 48" - MH RISER w/XYPEX T/G - 60"
- P3) 48" - MH RISER w/XYPEX T/G - 60"
- P2) 60" - XYPEX MH FT REDUCER 48" HOLE T/G - 15"
- P1) 60" - MH BASE Custom Ht, w/XYPEX T/n - 59"
- 1) JOINT WRAP - 0.065"x6"x50' CONSEAL CS212
- 1) JOINT WRAP PRIMER - CONSEAL CS-75 (1 gal.)
- 1) 48" - MH INVERT CHANNEL EWSU w/XYPEX - FULL HEIGHT
- 1) CASTING - HOE MC-315 F/C Sanitary
- 1) 60" - Conseal CS-102 1.00" (Double)
- 4) 48" - Conseal CS-102 1.00" (Double)
- 2) Kor-N-Seal2 - S206-30

0 lb  
 1738 lb  
 3353 lb  
 4192 lb  
 4192 lb  
 2204 lb  
 8153 lb  
 0 lb  
 0 lb  
 1440 lb  
 258 lb  
 0 lb  
 0 lb  
 13 lb

Structure Total: 25542 lb

**Structure Notes:**

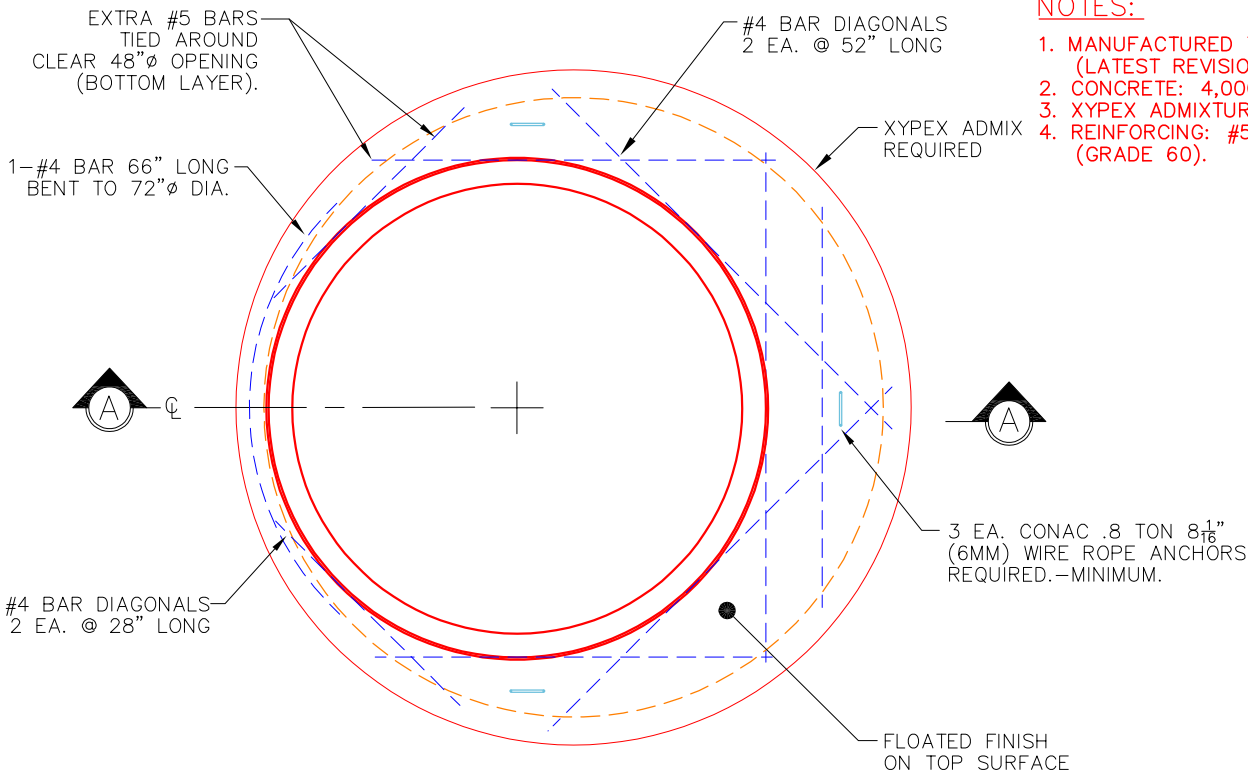
1. PER ASTM C478 SPECIFICATIONS.
2. CONCRETE = 4,000 PSI AT 28 DAYS.
3. CASTING BY ICAST (HOE MC-315 F/C "SANITARY").
4. NO STEPS.

**REINFORCING PER ASTM A615 (GRADE 60).**

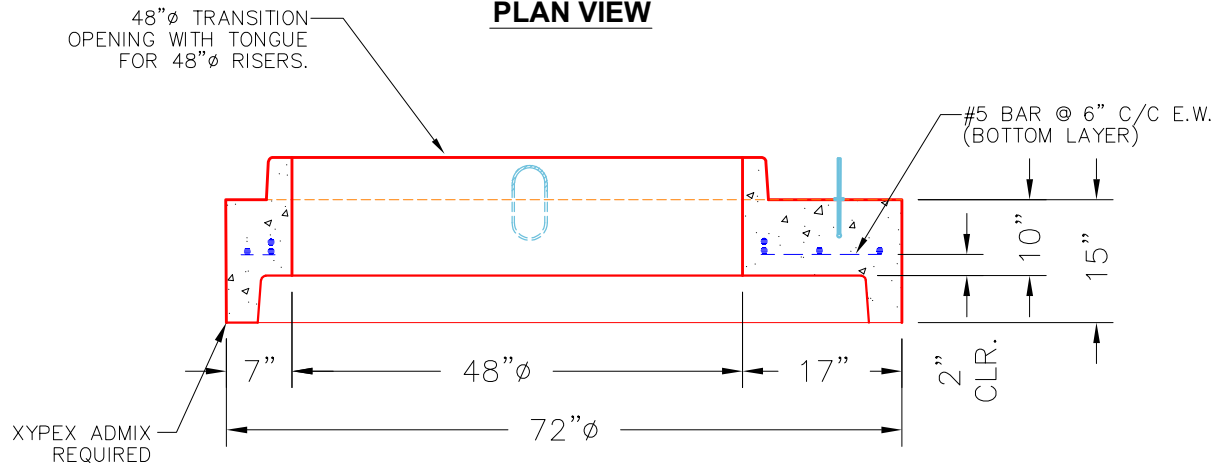
- TOP SLAB (As .31) #5 BARS AT 6" C.C.E.W.
- RISER/WALLS (As .18)
- FLOOR (As .37) #5 BARS AT 10" C.C.E.W.

**NOTES:**

1. MANUFACTURED TO ASTM C-478 (LATEST REVISION).
2. CONCRETE: 4,000 PSI AT 28 DAYS.
3. XYPEX ADMIXTURE REQUIRED.
4. REINFORCING: #5 BAR @ 6" C/C E.W. (GRADE 60).



**PLAN VIEW**



**SECTION A-A**

Coating (Int):  
 Coating (Ext):

Seam Up: Tongue  
 Seam Dn: Groove

Wall Thickness: 6"

Height (Ext): 15"

Weight (Net): 2204 lb  
 Volume (Net): 0.56cu.yd