

Job Name: 25-4590 Uhlhorn Sewer Repairs
 Job Location: Evansville, IN
 Contractor: Bowen Engineering Corporation

Plant: Beaver Dam
 4/15/2026 8:17:06 AM

Tech: S. Felletter
 PC: A. Chambers



Structure ID: 103 (9)

P1 MH060BAVFX

MH BASE Custom Ht, w/XYPEX T/n

P7) 24" - CASTING HEIGHT - 7"	0 lb
P6) 48" - ECC XYPEX CONE w/ 24" HOLE F/G - 24"	1738 lb
P5) 48" - MH RISER w/XYPEX T/G - 48"	3353 lb
P4) 48" - MH RISER w/XYPEX T/G - 60"	4192 lb
P3) 48" - MH RISER w/XYPEX T/G - 60"	4192 lb
P2) 60" - XYPEX MH FT REDUCER 48" HOLE T/G - 15"	2204 lb
P1) 60" - MH BASE Custom Ht, w/XYPEX T/n - 59"	8153 lb
1) JOINT WRAP - 0.065"x6"x50' CONSEAL CS212	0 lb
1) JOINT WRAP PRIMER - CONSEAL CS-75 (1 gal.)	0 lb
1) 48" - MH INVERT CHANNEL EWSU w/XYPEX - FULL HEIGHT	1440 lb
1) CASTING - HOE MC-315 F/C Sanitary	258 lb
1) 60" - Conseal CS-102 1.00" (Double)	0 lb
4) 48" - Conseal CS-102 1.00" (Double)	0 lb
2) Kor-N-Seal2 - S206-30	13 lb
Structure Total:	25542 lb

Structure Notes:
 1. PER ASTM C478 SPECIFICATIONS.
 2. CONCRETE = 4,000 PSI AT 28 DAYS.
 3. CASTING BY ICAST (HOE MC-315 F/C "SANITARY").
 4. NO STEPS.

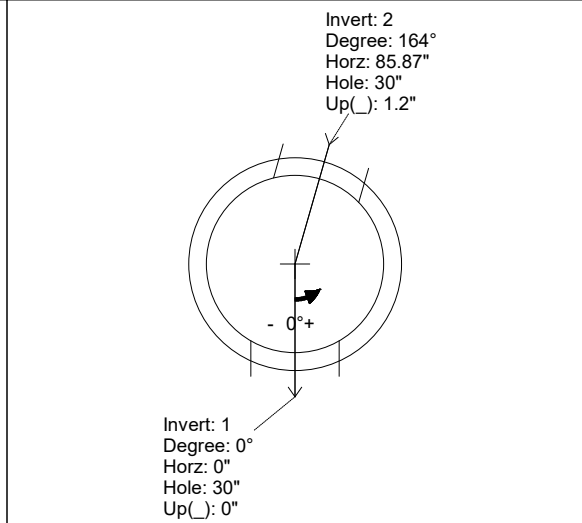
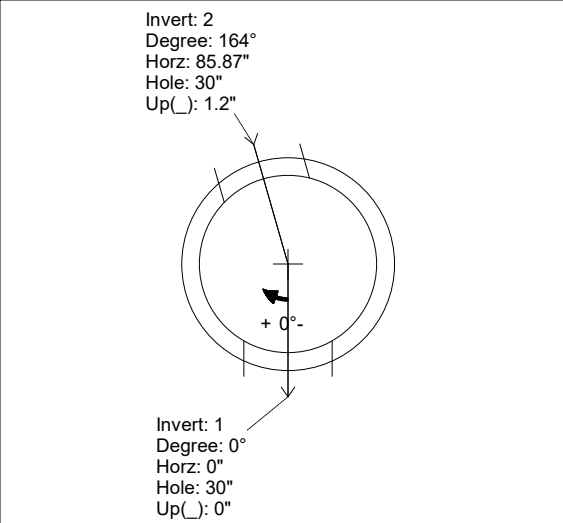
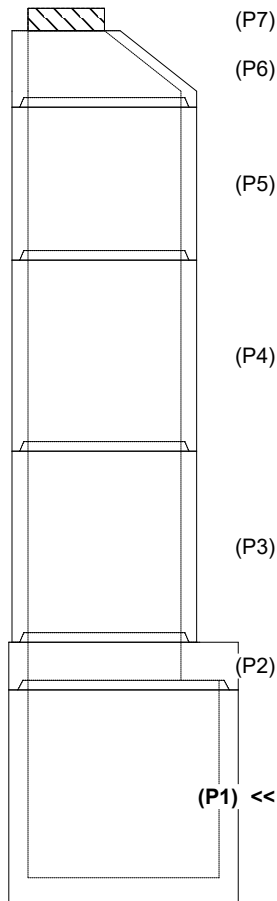
REINFORCING PER ASTM A615 (GRADE 60).
 - TOP SLAB (As .31) #5 BARS AT 6" C.C.E.W.
 - RISER/WALLS (As .18)
 - FLOOR (As .37) #5 BARS AT 10" C.C.E.W.

Rim: 378.8' Rim to Invert: 22.56' Slack: 0.72' Sump: 3" Step Position:

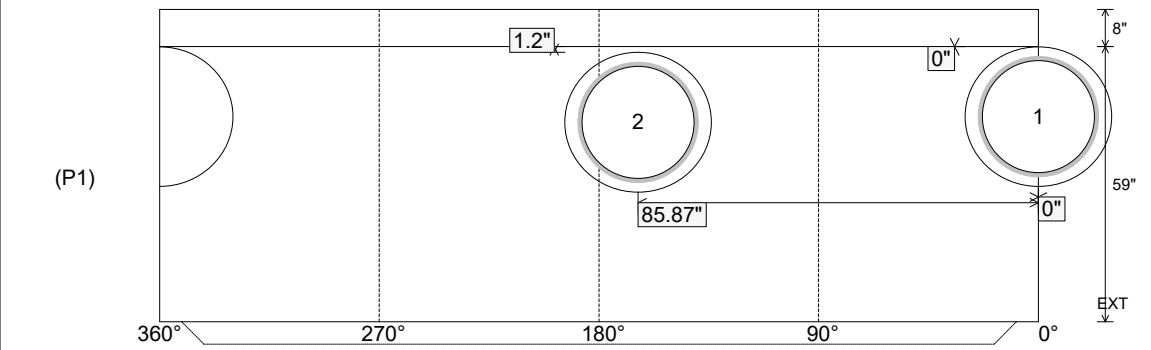
Position	Elev	Angle	Ext. (cw)	Pipe	Pipe OD	Connector	Hole	Horz Size	Up ()	Offset
Invert 1	356.24'	0°	0"	24" PVC C900	25.8"	Kor-N-Seal2 S206-30	30"	31.416"	0"	0"
Invert 2	356.34'	164°	103.044"	24" PVC C900	25.8"	Kor-N-Seal2 S206-30	30"	31.416"	1.2"	0"
Invert 3										
Invert 4										
Invert 5										
Invert 6										
Invert 7										
Invert 8										

RIGHT-SIDE UP VIEW (int. dimensions)

UPSIDE-DOWN VIEW (int. dimensions)



INSIDE WALL DIMENSIONS



Coating (Int): Coating (Ext):	Seam Up: Tongue Seam Dn: n/a	Wall Thickness: 6" Floor Height: 8"	Height (Int): 59" Height (Ext): 67"	Weight (Net): 8153 lb Volume (Net): 2.08cu.yd
----------------------------------	---------------------------------	--	--	--

Job Name: 25-4590 Uhlhorn Sewer Repairs
 Job Location: Evansville, IN
 Contractor: Bowen Engineering Corporation

Plant: Beaver Dam
 4/15/2026 8:17:06 AM

Tech: S. Felletter
 PC: A. Chambers



Structure ID: 103 (9)

P1 MH060BAVFX

MH BASE Custom Ht, w/XYPEX T/n

- P7) 24" - CASTING HEIGHT - 7"
- P6) 48" - ECC XYPEX CONE w/ 24" HOLE F/G - 24"
- P5) 48" - MH RISER w/XYPEX T/G - 48"
- P4) 48" - MH RISER w/XYPEX T/G - 60"
- P3) 48" - MH RISER w/XYPEX T/G - 60"
- P2) 60" - XYPEX MH FT REDUCER 48" HOLE T/G - 15"
- P1) 60" - MH BASE Custom Ht, w/XYPEX T/n - 59"
- 1) JOINT WRAP - 0.065"x6"x50' CONSEAL CS212
- 1) JOINT WRAP PRIMER - CONSEAL CS-75 (1 gal.)
- 1) **48" - MH INVERT CHANNEL EWSU w/XYPEX - FULL HEIGHT**
- 1) CASTING - HOE MC-315 F/C Sanitary
- 1) 60" - Conseal CS-102 1.00" (Double)
- 4) 48" - Conseal CS-102 1.00" (Double)
- 2) Kor-N-Seal2 - S206-30

0 lb
 1738 lb
 3353 lb
 4192 lb
 4192 lb
 2204 lb
 8153 lb
 0 lb
 0 lb
 1440 lb
 258 lb
 0 lb
 0 lb
 13 lb

Structure Notes:

1. PER ASTM C478 SPECIFICATIONS.
2. CONCRETE = 4,000 PSI AT 28 DAYS.
3. CASTING BY ICAST (HOE MC-315 F/C "SANITARY").
4. NO STEPS.

REINFORCING PER ASTM A615 (GRADE 60).
 - TOP SLAB (As .31) #5 BARS AT 6" C.C.E.W.
 - RISER/WALLS (As .18)
 - FLOOR (As .37) #5 BARS AT 10" C.C.E.W.

**Invert channel drawing
 Full height invert
 EWSU invert required**

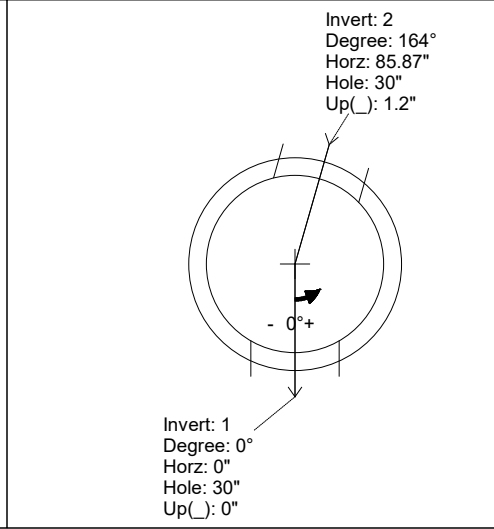
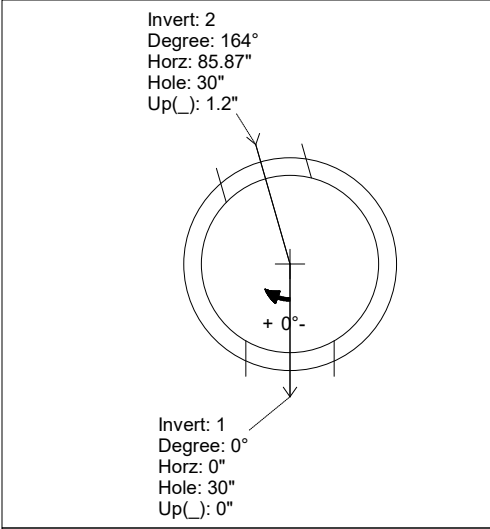
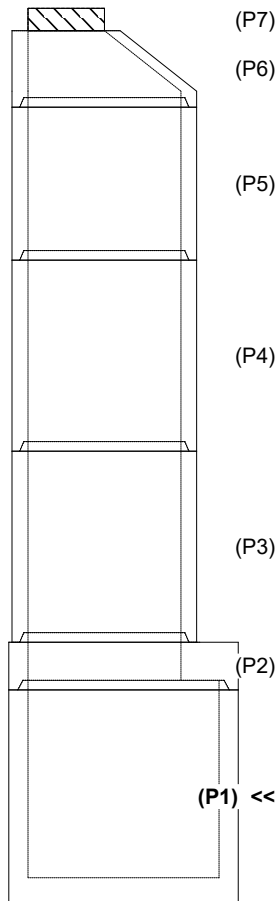
Structure Total: 25542 lb

Rim: 378.8' Rim to Invert: 22.56' Slack: 0.72' Sump: 3' Step Position:

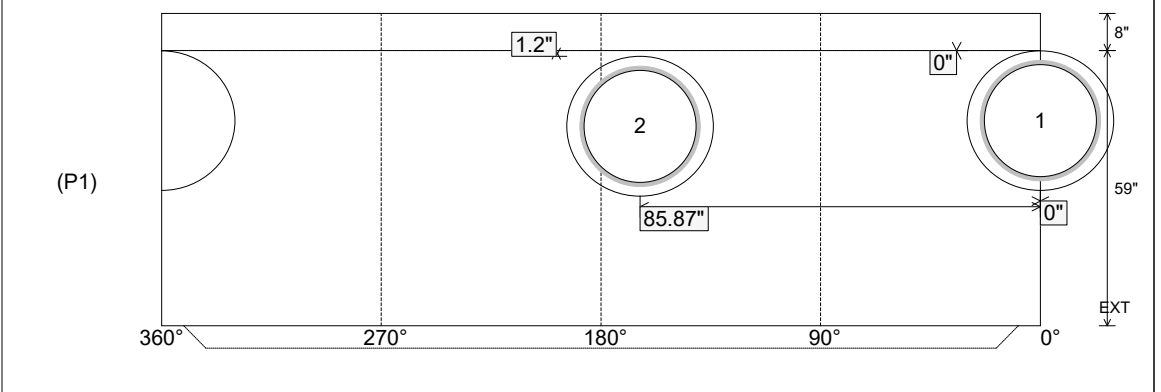
Position	Elev	Angle	Ext. (cw)	Pipe	Pipe OD	Connector	Hole	Horz Size	Up ()	Offset
Invert 1	356.24'	0°	0"	24" PVC C900	25.8"	Kor-N-Seal2 S206-30	30"	31.416"	0"	0"
Invert 2	356.34'	164°	103.044"	24" PVC C900	25.8"	Kor-N-Seal2 S206-30	30"	31.416"	1.2"	0"
Invert 3										
Invert 4										
Invert 5										
Invert 6										
Invert 7										
Invert 8										

RIGHT-SIDE UP VIEW (int. dimensions)

UPSIDE-DOWN VIEW (int. dimensions)



INSIDE WALL DIMENSIONS



Coating (Int): Coating (Ext):	Seam Up: Tongue Seam Dn: n/a	Wall Thickness: 6" Floor Height: 8"	Height (Int): 59" Height (Ext): 67"	Weight (Net): 8153 lb Volume (Net): 2.08cu.yd
----------------------------------	---------------------------------	--	--	--