

Job Name: 25-4583 - Housing Authority
 Job Location: Morgantown, KY 42261
 Contractor: Dirt Movers

Plant: 100

Tech: J. Horsley - A

12/30/2025 10:00:24 AM

PC: Trevor Lewis



Structure ID: 1B (3)

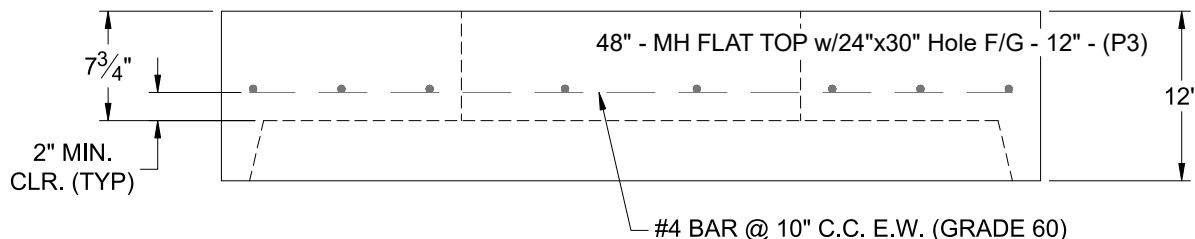
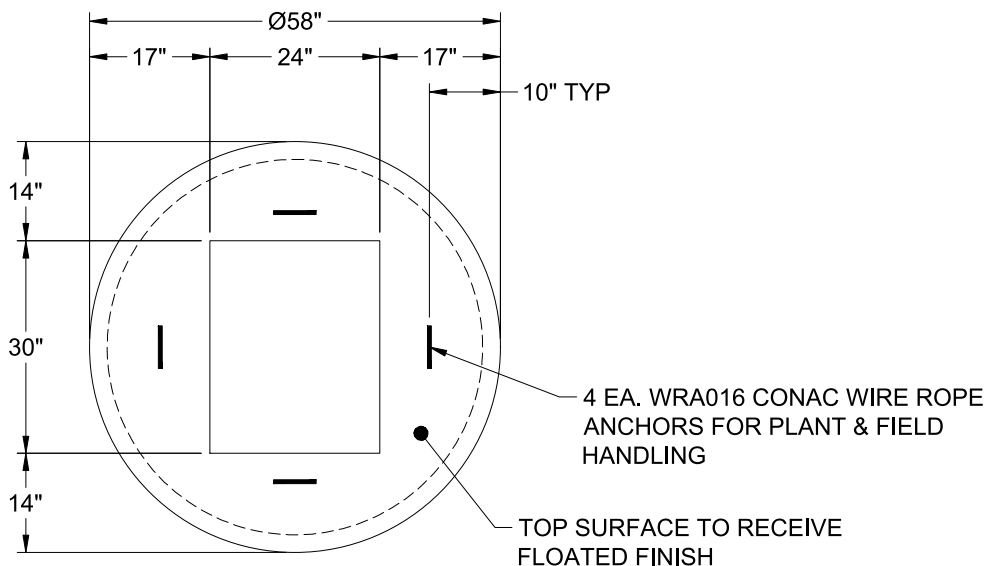
P3 MH048LD12-24X30RECT

MH FLAT TOP w/24"x30" Hole F/G

- P4) 24" x 30" - CASTING HEIGHT - 3.50"
- P3) 48" - MH FLAT TOP w/24"x30" Hole F/G - 12"
- P2) 48" - MH RISER T/G - 48"
- P1) 48" - MH BASE T/n - 60"
- 1) CASTING - HOE 275-A F/G
- 2) 48" - Conseal CS-102 1.00"
- 1) 24" x 30" - Conseal CS-102 1.00"
- 2) Hole - 28
- 9) MH Step ML-10-TDS-NCR - 10"

0 lb
 1935 lb
 3353 lb
 4976 lb
 345 lb
 0 lb
 0 lb
 0 lb
 0 lb
 0 lb
 Structure Total: 10610 lb

- Structure Notes:**
1. HOE 275-A FRAME & GRATE PROVIDED BY ICAST
 2. PER ASTM C-478 SPECIFICATIONS
 3. CONCRETE: 4,000 PSI AT 28 DAYS
 4. REINFORCEMENT: #4 BAR @ 10" C.C. E.W. (GRADE 60) - 2" MIN. REBAR CLEARANCE (TYP)
 5. STEPS AT 90 DEGREES
 6. LIFTERS: 4 EA. WRA016 CONAC WIRE ROPE ANCHORS FOR PLANT & FIELD HANDLING



Coating (Int):
 Coating (Ext):

Seam Up: Flat
 Seam Dn: Groove

Wall Thickness: 5"

Height (Ext): 12"

Weight (Net): 1935 lb
 Volume (Net): 0.49cu.yd