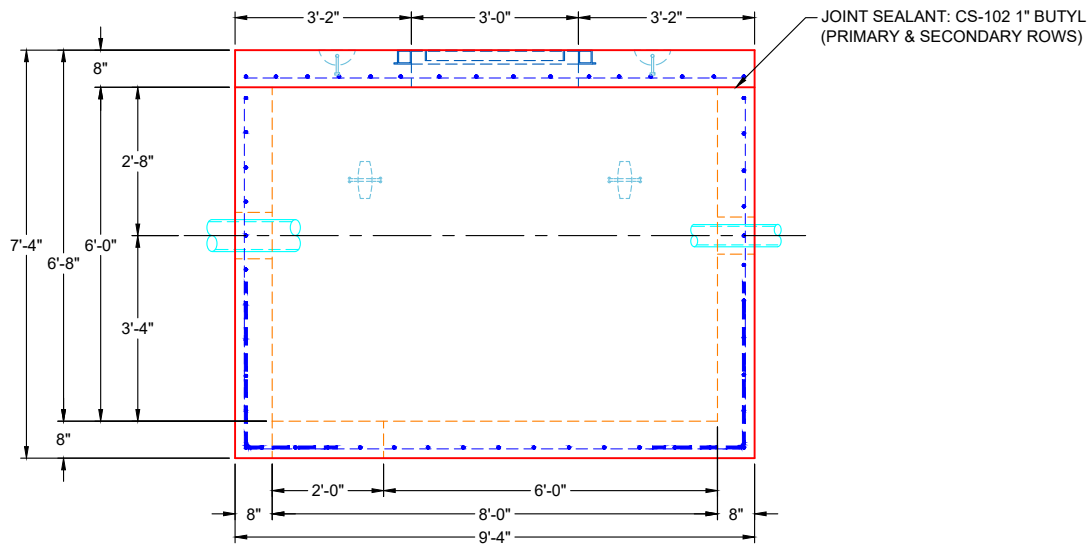
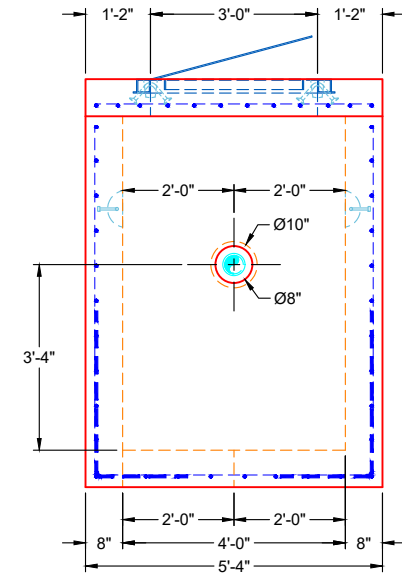


**PLAN VIEW**



**FRONT VIEW**



**SIDE VIEW**

**GENERAL NOTES:**

1. MANUFACTURED PER ASTM C-913 SPECIFICATIONS
2. CONCRETE: 4,000 PSI AT 28 DAYS
3. REINFORCEMENT:  
- FLAT LID: #5 BAR @ 6" C.C. E.W. (GRADE 60)  
- BASE WALLS & FLOOR: #5 BAR @ 8" C.C. E.W. (GRADE 60)
4. WEIGHTS:  
8" FLAT LID 4,105 LBS  
72" BASE (8" WALLS, 8" FLOOR) 19,806 LBS  
TOTAL WEIGHT 23,911 LBS
5. HALLIDAY H1W 36" X 36" HATCH SUPPLIED BY ICAST - TO BE CAST INTO FLAT LID
6. JOINT SEALANT: CONSEAL CS-102 - 1" BUTYL (PRIMARY & SECONDARY ROWS)
7. LINK-SEAL CONNECTORS SUPPLIED BY OTHERS
8. PRE-ASSEMBLY OF INTERNAL COMPONENTS TO BE PERFORMED BY ICAST PRIOR TO DELIVERY
9. PRESSURE TESTING OF VAULT TO BE PERFORMED BY ENGINEERED DESIGN SOLUTIONS PRIOR TO DELIVERY

**REVISION INFORMATION**

REV.	DATE:	NO REVISIONS TO DATE



SUBMITTAL DRAWING: 48" X 96" MASTER METER VAULT		
CUSTOMER: ENDESOL, INC.		
PROJECT: KY-1638 TRANSMISSION MAIN IMPROVEMENTS PH 1		
STRUCTURE: 54570 (2)		
QUOTE/SALES ORDER NO: 25-4570		
CHECKED BY: B. SMITH	DRAWN BY: FORMONIC	
DATE: 02/26/26	SCALE: NTS	PG. 1 OF 1