

Job Name: 25-4570 - KY 1638 Transmission Main Improvements Ph 1
 Job Location: Brandenburg, KY
 Contractor: Endesol, Inc.

Plant: Beaver Dam, KY
 2/26/2026 8:12:09 AM

Tech: J. Coppage - F
 PC: E. Bradley



Structure ID: 54570 (2)

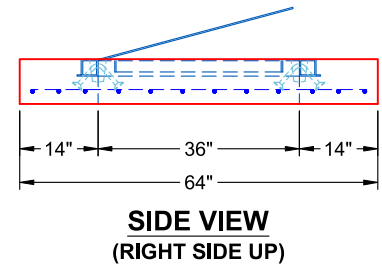
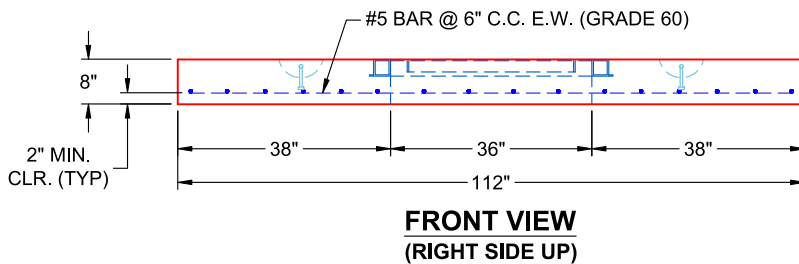
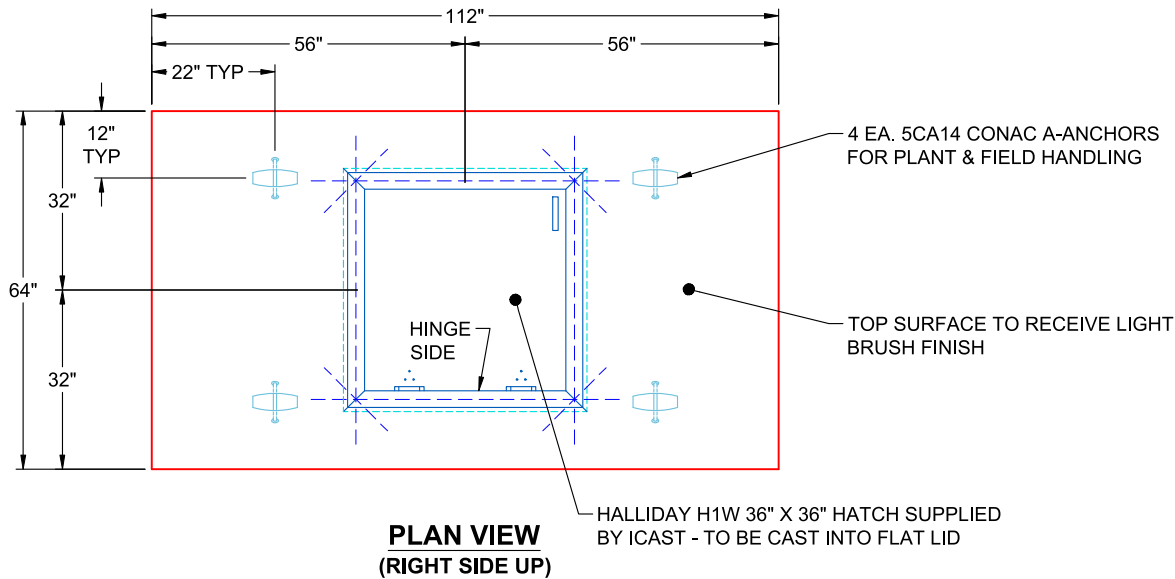
P2 BX048096-08LD08S

CB FLAT TOP 8"W w/36"x36" HATCH F/F

- P3) 36" x 36" - HATCH (CAST FLUSH) - 3"
- P2) 48" x 96" - CB FLAT TOP 8"W w/36"x36" HATCH F/F - 8"
- P1) 48" x 96" - BOX BASE 8inW, 8inF, Variable Ht F/n - 72"
- 1) HATCH (Alum.) - HALLIDAY H1W 36"x36"
- 1) This Structure Includes a Cast-in Item - Halliday H1W 36" x 36" Hatch
- 1) SPECIAL Pre-Assembly of Internal Material Required
- 1) SECONDARY POUR
- 1) 48" x 96" - Conseal CS-102 1.00" (Double)
- 1) Hole - 8
- 1) Hole - 10

	0 lb
	4105 lb
	19806 lb
	235 lb
	0 lb
	0 lb
	0 lb
	0 lb
	0 lb
	0 lb
	0 lb
Structure Total:	24146 lb

- Structure Notes:
1. PER ASTM C-913 SPECIFICATIONS
 2. CONCRETE: 4,000 PSI AT 28 DAYS
 3. REINFORCEMENT: #5 BAR @ 6" C.C. E.W. (GRADE 60) - 2" MIN. REBAR CLEARANCE (TYP)
 4. HALLIDAY H1W 36" X 36" HATCH SUPPLIED BY ICAST - TO BE CAST INTO FLAT LID
 5. LIFTERS: 4 EA. 5CA14 CONAC A-ANCHORS FOR PLANT & FIELD HANDLING - INSTALLED AS SHOWN
 6. TOP SURFACE TO RECEIVE LIGHT BRUSH FINISH



Coating (Int): Coating (Ext):	Seam Up: Flat Seam Dn: Flat	Wall Thickness: 8"	Height (Ext): 8"	Weight (Net): 4105 lb Volume (Net): 1.05cu.yd
----------------------------------	--------------------------------	--------------------	------------------	--

Job Number:

25-4570

Job Name:

KY 1638 Transmission Main
Improvements Ph 1

Structure:

54570 (2)

Note:

Halliday H1W 36" x 36" Hatch
Supplied By iCast To Be Cast Into
Flat Lid