

Job Name: 25-4570 - KY 1638 Transmission Main Improvements Ph 1
 Job Location: Brandenburg, KY
 Contractor: Endesol, Inc.

Plant: Beaver Dam, KY
 2/26/2026 4:05:57 PM

Tech: J. Coppage - F
 PC: E. Bradley



Structure ID: 54570 (2)

P1 BX4896-08BAVF

BOX BASE 8inW, 8inF, Variable Ht F/n

- P3) 36" x 36" - HATCH (CAST FLUSH) - 3"
- P2) 48" x 96" - CB FLAT TOP 8"W w/36"x36" HATCH F/F - 8"
- P1) 48" x 96" - BOX BASE 8inW, 8inF, Variable Ht F/n - 72"
- 1) HATCH (Alum.) - HALLIDAY H1W 36"x36"
- 1) This Structure Includes a Cast-in Item - Halliday H1W 36" x 36" Hatch
- 1) SPECIAL Pre-Assembly of Internal Material Required
- 1) SECONDARY POUR
- 1) 48" x 96" - Conseal CS-102 1.00" (Double)
- 1) Hole - 8
- 1) Hole - 10

0 lb
4105 lb
19806 lb
235 lb
0 lb
0 lb
0 lb
0 lb
0 lb
0 lb
0 lb
0 lb

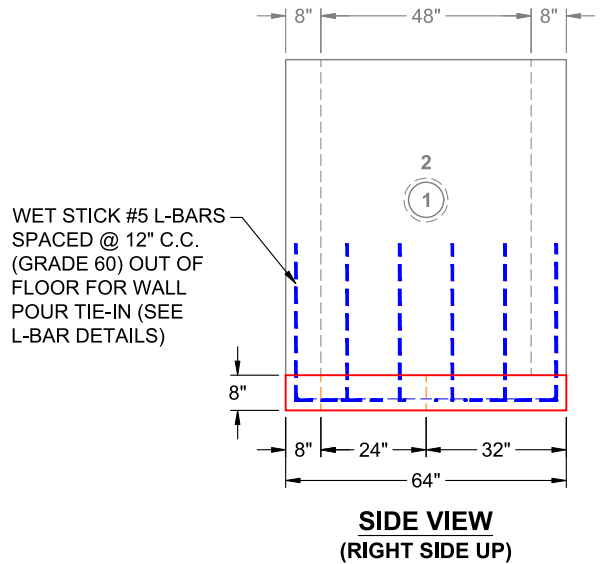
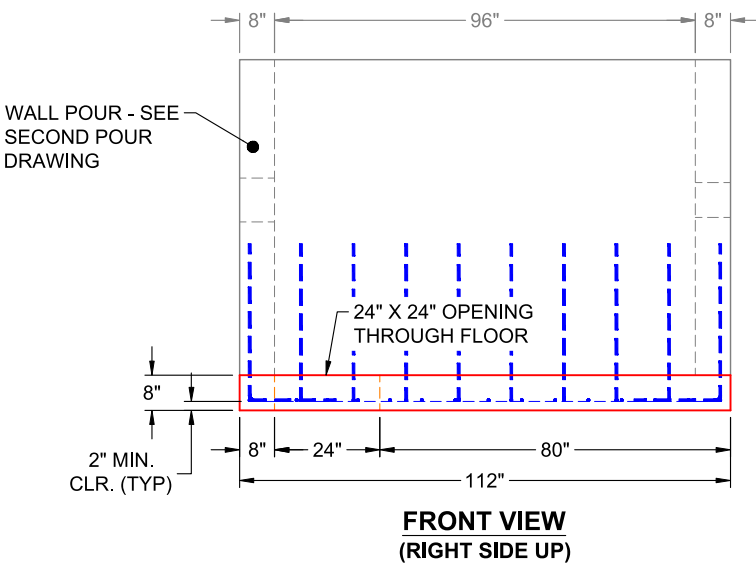
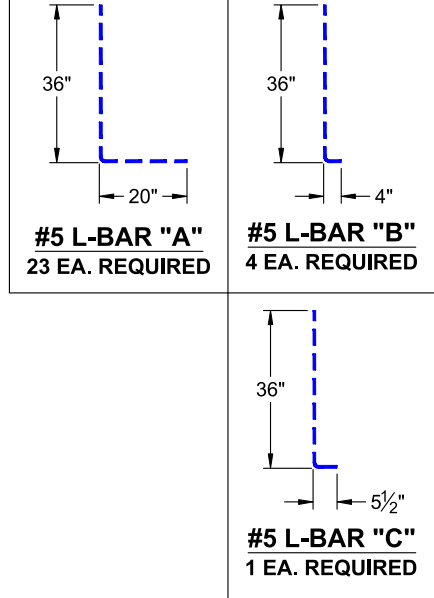
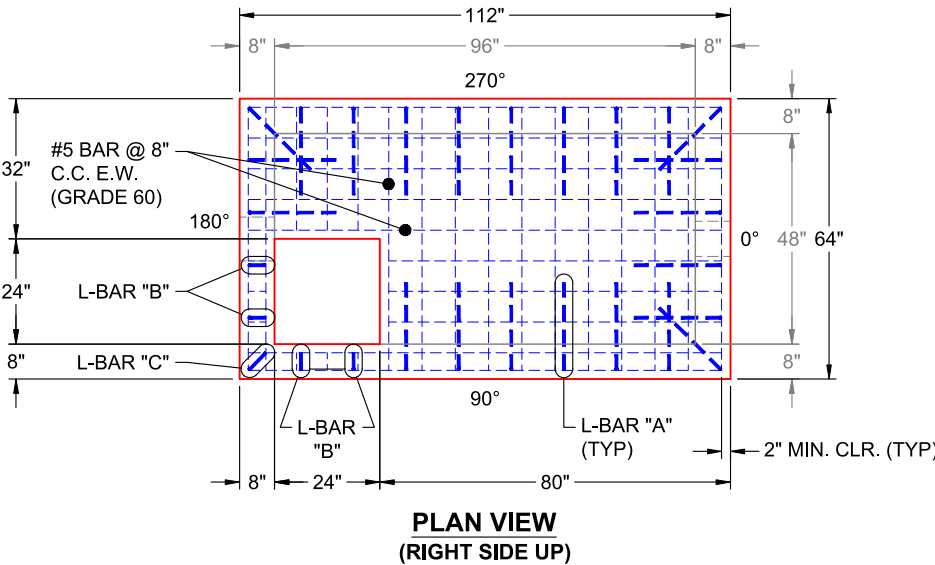
Structure Total: 24146 lb

- Structure Notes:
1. PER ASTM C-913 SPECIFICATIONS
 2. CONCRETE: 4,000 PSI AT 28 DAYS
 3. REINFORCEMENT: #5 BAR @ 8" C.C. E.W. (GRADE 60) - 2" MIN. REBAR CLEARANCE (TYP)
 4. HALLIDAY H1W 36" X 36" HATCH SUPPLIED BY ICAST - TO BE CAST INTO FLAT LID
 5. PRE-ASSEMBLY OF INTERNAL COMPONENTS TO BE PERFORMED BY ICAST
 6. WET STICK #5 L-BARS SPACED @ 12" C.C. (GRADE 60) OUT OF FLOOR FOR WALL POUR TIE-IN (SEE L-BAR DETAILS)

FIRST POUR (FLOOR): 4,812 LBS
SECOND POUR (WALLS): 14,994 LBS

Rim: 6.667' Rim to Invert: 3.584' Slack: 0" Sump: 37" Step Position:

Position	Elev	Angle	Ext. (cw)	Pipe	Pipe OD	Connector	Hole	Horz Size	Up (L)	Offset
Invert 1	3.167'	0°	32"	4" DI	4.75"	Hole 8	8"	8"	36"	0"
Invert 2	3.083'	180°	32"	6" DI	6.875"	Hole 10	10"	10"	35"	0"



Coating (Int): Coating (Ext):	Seam Up: Flat Seam Dn: n/a	Wall Thickness: 8" Floor Height: 8"	Height (Int): 72" Height (Ext): 80"	Weight (Net): 19806 lb Volume (Net): 5.06cu.yd
----------------------------------	-------------------------------	--	--	---

Job Name: 25-4570 - KY 1638 Transmission Main Improvements Ph 1
 Job Location: Brandenburg, KY
 Contractor: Endesol, Inc.

Plant: Beaver Dam, KY
 2/26/2026 4:05:57 PM

Tech: J. Coppage - F
 PC: E. Bradley



Structure ID: 54570 (2)

P1 BX4896-08BAVF

BOX BASE 8inW, 8inF, Variable Ht F/n

- P3) 36" x 36" - HATCH (CAST FLUSH) - 3"
- P2) 48" x 96" - CB FLAT TOP 8"W w/36"x36" HATCH F/F - 8"
- P1) 48" x 96" - BOX BASE 8inW, 8inF, Variable Ht F/n - 72"
- 1) HATCH (Alum.) - HALLIDAY H1W 36"x36"
- 1) This Structure Includes a Cast-in Item - Halliday H1W 36" x 36" Hatch
- 1) SPECIAL Pre-Assembly of Internal Material Required
- 1) SECONDARY POUR
- 1) 48" x 96" - Conseal CS-102 1.00" (Double)
- 1) Hole - 8
- 1) Hole - 10

0 lb
 4105 lb
 19806 lb
 235 lb
 0 lb
 0 lb
 0 lb
 0 lb
 0 lb
 0 lb
 0 lb
 0 lb
 0 lb
 24146 lb

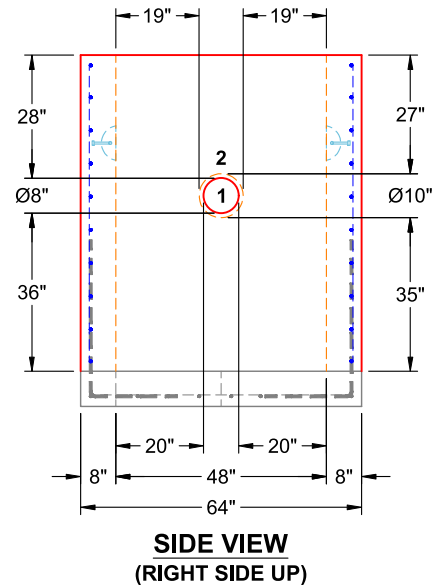
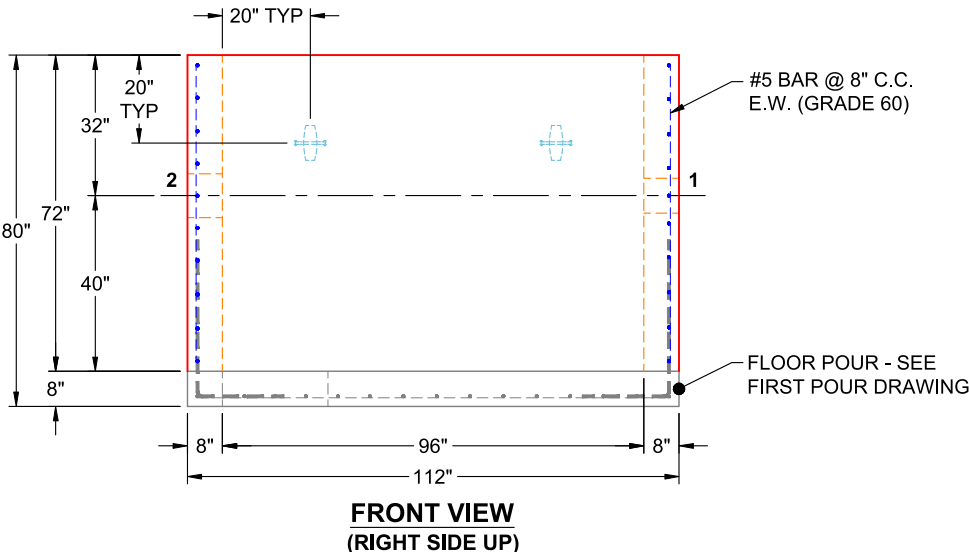
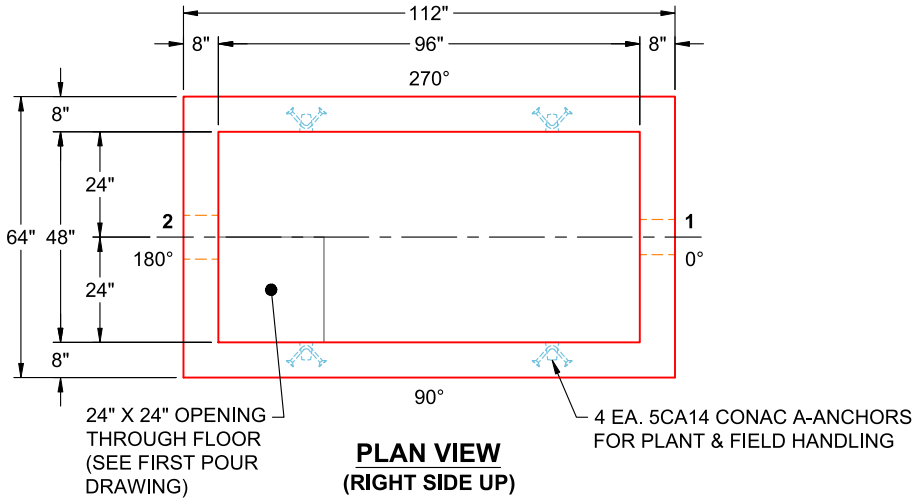
- Structure Notes:**
1. PER ASTM C-913 SPECIFICATIONS
 2. CONCRETE: 4,000 PSI AT 28 DAYS
 3. REINFORCEMENT: #5 BAR @ 8" C.C. E.W. (GRADE 60) - 2" MIN. REBAR CLEARANCE (TYP)
 4. HALLIDAY H1W 36" X 36" HATCH SUPPLIED BY ICAST - TO BE CAST INTO FLAT LID
 5. PRE-ASSEMBLY OF INTERNAL COMPONENTS TO BE PERFORMED BY ICAST
 6. LIFTERS: 4 EA. 5CA14 CONAC A-ANCHORS FOR PLANT & FIELD HANDLING - INSTALLED AS SHOWN

Structure Total: 24146 lb

FIRST POUR (FLOOR): 4,812 LBS
SECOND POUR (WALLS): 14,994 LBS

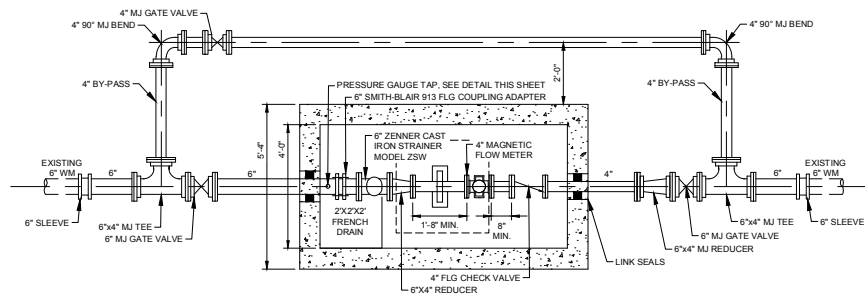
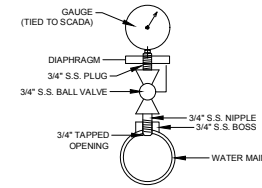
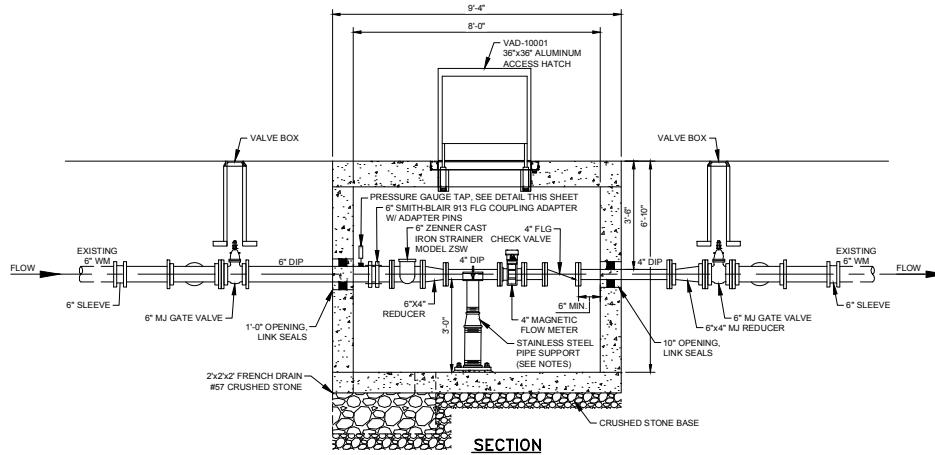
Rim: 6.667' Rim to Invert: 3.584' Slack: 0" Sump: 37" Step Position:

Position	Elev	Angle	Ext. (cw)	Pipe	Pipe OD	Connector	Hole	Horz Size	Up (L)	Offset
Invert 1	3.167'	0°	32"	4" DI	4.75"	Hole 8	8"	8"	36"	0"
Invert 2	3.083'	180°	32"	6" DI	6.875"	Hole 10	10"	10"	35"	0"



Coating (Int): Coating (Ext):	Seam Up: Flat Seam Dn: n/a	Wall Thickness: 8" Floor Height: 8"	Height (Int): 72" Height (Ext): 80"	Weight (Net): 19806 lb Volume (Net): 5.06cu.yd
----------------------------------	-------------------------------	--	--	---

SPECIAL PRE-ASSEMBLY PERFORMED BY ICAST
JOB NUMBER: 25-4570
STRUCTURE: 54570 (2)

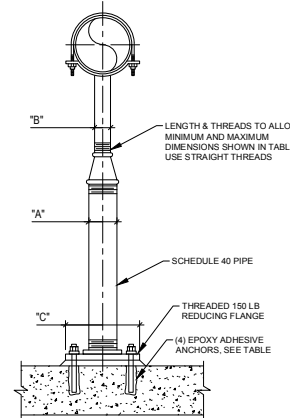


GENERAL NOTES:

1. ALL PIPE AND FITTINGS INSIDE THE VAULT SHALL BE FLANGED DUCTILE IRON PIPE, CLASS 350/ CLASS 52.
2. METER VAULT TO BE PRECAST CONCRETE (SEE SPECIFICATIONS)
3. INTERIOR PIPING SHALL BE PRIMED AND EPOXY COATED.
4. ALL PIPE AND FITTINGS OUTSIDE THE VAULT SHALL BE RESTRAINED MECHANICAL JOINT DUCTILE IRON PIPE.
5. CONTRACTOR TO PROVIDE SHOP DRAWINGS ON STAINLESS STEEL PIPE SUPPORT. AT MINIMUM, 1 PIPE SUPPORT SHOULD BE INSTALLED TO KEEP PIPE AND APPURTENANCES SUSPENDED WITHOUT SAGGING.
6. ALL STAINLESS STEEL SHALL BE TYPE 316.
7. ALL DI FLANGED PIPING INSIDE THE METER VAULT SHALL BE EPOXY COATED PER SPECIFICATION 09 96 00 - HIGH PERFORMANCE INDUSTRIAL COATINGS

METER VAULT

SCALE: 1/2" = 1'-0"



FLOOR PIPE SUPPORT SCHEDULE
DIMENSIONS IN INCHES

PIPE SIZE	"A"	"B"	"C"	"D"		ANCHORS	
				MINIMUM	MAXIMUM	DIA.	EMBED
2	2 1/2	-	9	-	-	5/8	5
2 1/2	2 1/2	-	9	-	-	5/8	5
3	2 1/2	-	9	-	-	5/8	5
3 1/2	2 1/2	-	9	10 1/4	10 1/4	5/8	5
4	4	3	9	9 1/2	14	5/8	5
5	4	3	9	10 1/8	14 5/8	5/8	5
6	4	3	9	10 3/4	15 1/4	5/8	5
8	4	3	9	12 1/4	16 3/4	5/8	5
10	4	3	9	13 3/4	18 1/4	5/8	5
12	4	3	9	14 5/8	19 1/8	5/8	5

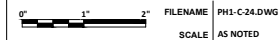


DESIGNED BY	DANIELLE DRESCH
DRAWN BY	DAKOTA HESS
REVIEWED BY	ROSS GUFFEY
PROJECT NUMBER	10414491

PROJECT MANAGER	KEVIN BRIAN
DESIGNED BY	DANIELLE DRESCH
DRAWN BY	DAKOTA HESS
REVIEWED BY	ROSS GUFFEY
PROJECT NUMBER	10414491



MEADE COUNTY WATER DISTRICT
KY-1638 TRANSMISSION MAIN
PHASE 1
MEADE COUNTY, KENTUCKY



PLOT DATE: 11/14/25

SHEET
C-24