

**Job Name: 25-4566 - Government Center**  
**Job Location: Henry Co, TN**  
**Contractor: Parker Excavating, LLC.**

PC: J. Jarvis  
 TECH: S. Felletter  
 Plant: Beaver Dam



Structure ID: **SCI 8 (6)**  
 Spec: TDOT  
 Type: CB TYPE 12RA  
 Size: 48"

Rim: 544.76'  
 Invert: 539.67'  
 Rim to Invert: 5.09'

Sump: 1.6"  
 Floor (Top): 539.537'  
 Floor Height: 6"

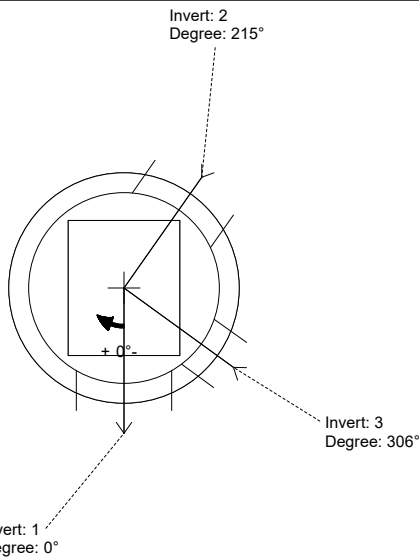
Floor (Bot): 539.037'  
 Overall Height: 5.667'  
 Slack: 0.68"

**Structure Notes:**

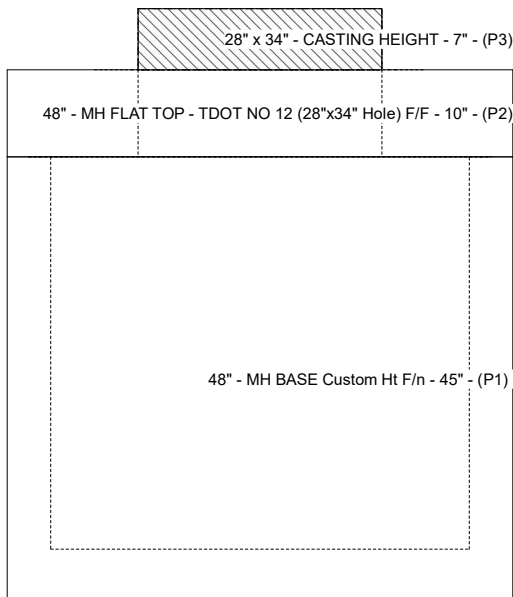
1. PER TDOT D-CB-12RA / ASTM C-478 SPECS
2. CONCRETE: 4,000 PSI AT 28 DAYS
3. REINFORCEMENT: PER TDOT STANDARD DWG D-CB-12RA & ASTM A615
4. NO STORM INVERT
5. NO STEPS
6. JBS 3123 MODIFIED SINGLE SET SUPPLIED BY ICAST

**STRUCTURE SUMMARY:**

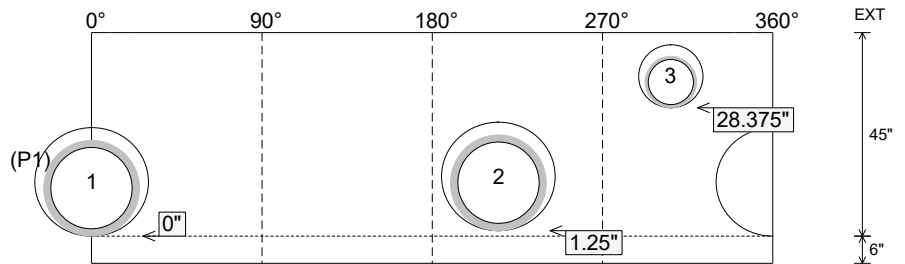
- P3) 28" x 34" - CASTING HEIGHT - 7" 0 lb
- P2) 48" - MH FLAT TOP - TDOT NO 12 (28"x34" Hole) F/F - 10" 1497 lb
- P1) 48" - MH BASE Custom Ht F/n - 45" 4014 lb
- 1) CASTING - JBS 3123 MODIFIED SET 250 lb
- 1) 48" - Conseal CS-102 1.00" 0 lb
- 1) 28" x 34" - Conseal CS-102 1.00" 0 lb
- 2) Hole - 24 0 lb
- 1) Hole - 14 0 lb
- Structure Total: 5761 lb**



Position	Elev	Angle	Pipe	Pipe OD	Hole	Connector	Up (")	Ref
Rim	544.76'							
Reducer								
Invert 1	539.67'	0°	18" HDPE	21.2"	24"	Hole 24	0"	P1
Invert 2	539.77'	215°	18" HDPE	21.2"	24"	Hole 24	1.25"	P1
Invert 3	541.96'	306°	10" HDPE	11.4"	14"	Hole 14	28.375"	P1
Invert 4								
Invert 5								
Invert 6								
Invert 7								
Invert 8								

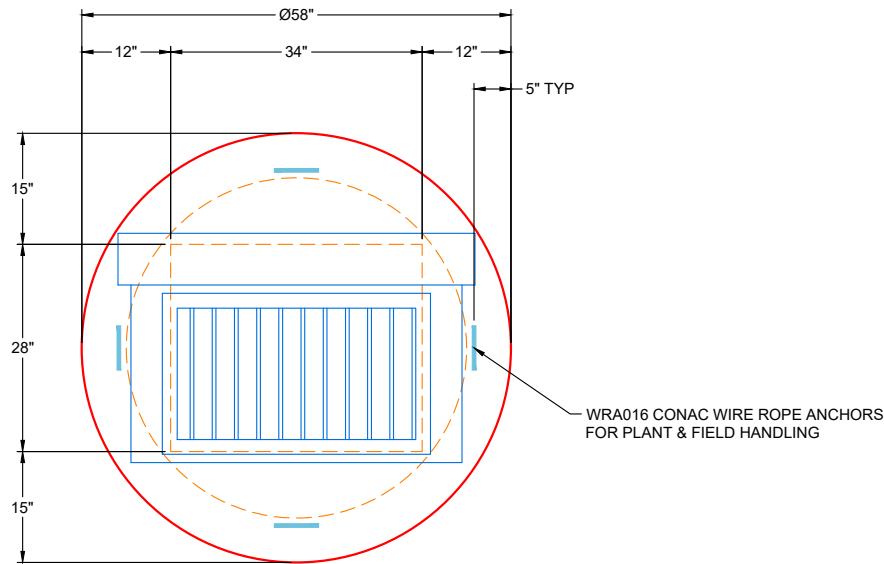


**Cast (Int. Dim.) - Interior Dimensions**



Submittal Drawing  
 4/3/2026 10:37:18 AM

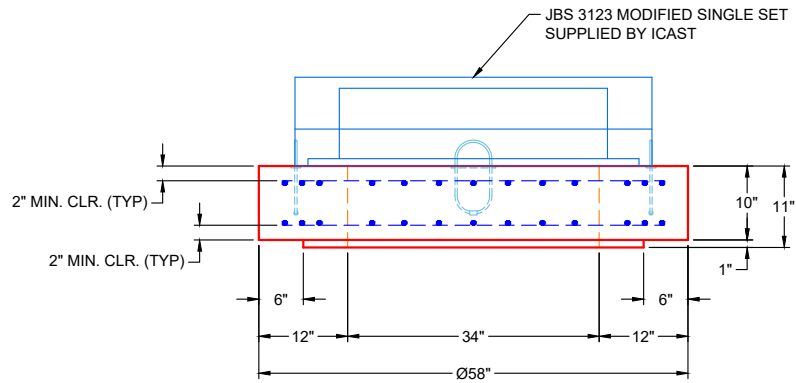
SUBMITTAL  
 APPROVED BY:



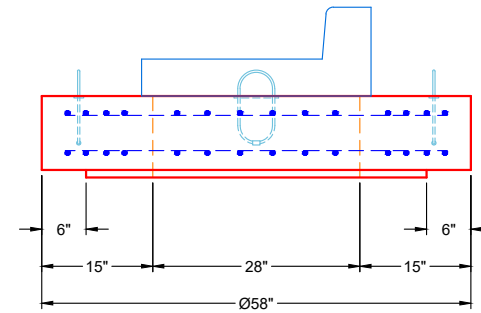
**PLAN VIEW**

**GENERAL NOTES**

1. PER TDOT STANDARD DRAWING D-CB-12RA & ASTM C-478 SPECS
2. CONCRETE: 5,000 PSI AT 28 DAYS
3. REINFORCEMENT: PER TDOT & ASTM A615 STANDARDS
4. WEIGHT: 1,497 LBS
5. JBS 3123 MODIFIED SINGLE SET SUPPLIED BY ICAST



**FRONT VIEW**



**SIDE VIEW**

**REVISION INFORMATION**

REV.	DATE:	NO REVISIONS TO DATE



SUBMITTAL DRAWING: Ø48" MH 10" HT. FLAT LID SPECIAL		
CUSTOMER: PARKER EXCAVATING, LLC		
PROJECT: GOVERNMENT CENTER		
STRUCTURE: SCI 8 (6)		
QUOTE/SALES ORDER NO: 25-4566		
CHECKED BY: B. SMITH	DRAWN BY: K. CARDWELL	
DATE: 04/03/26	SCALE: NTS	PG. 1 OF 1