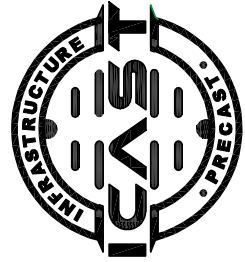




Structure ID: HW 11 (9)

P1 HWTDOT3-1TU18

18" - HW TDOT 3:1 Type U Cross Drain Endwall F/F



INFRASTRUCTURE PRECAST, INC.
 981 WEST 7TH ST., BEAVER DAM, KY. 42320
 PHONE: (270) 363-2238, FAX: (270) 298-7424

TDOT TYPE "SAFETY" SIDE DRAIN ENDWALL WITH STEEL PIPE GRATES FOR 15" THROUGH 48" PIPES (6:1 & 12:1 SLOPES)

DRAWING NO.: ET-TDOT-200 DATE: 10-02-25

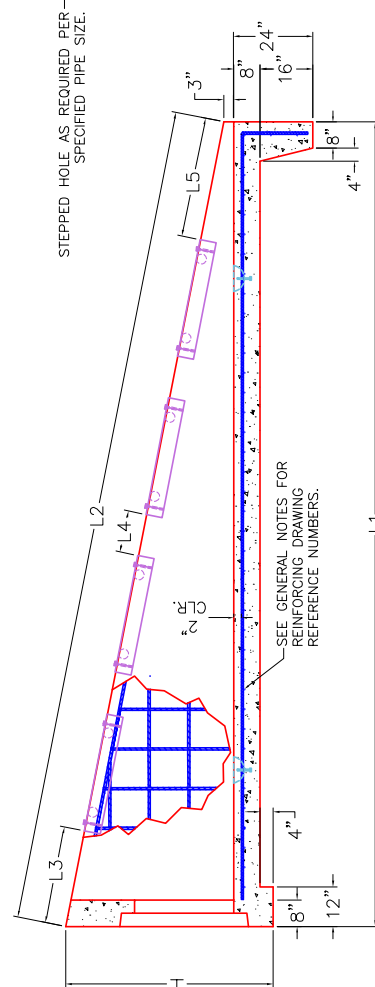
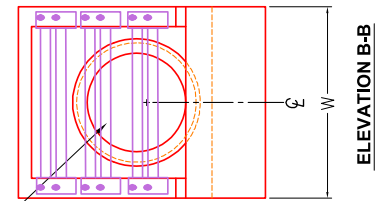
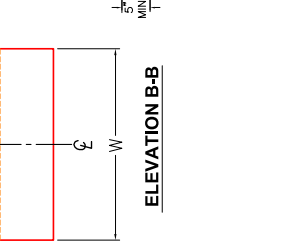
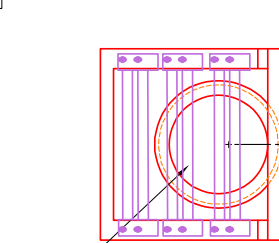
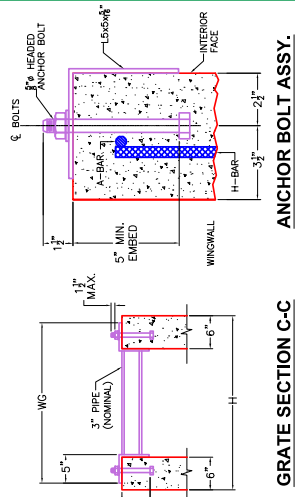
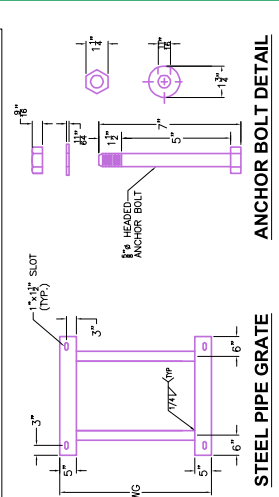
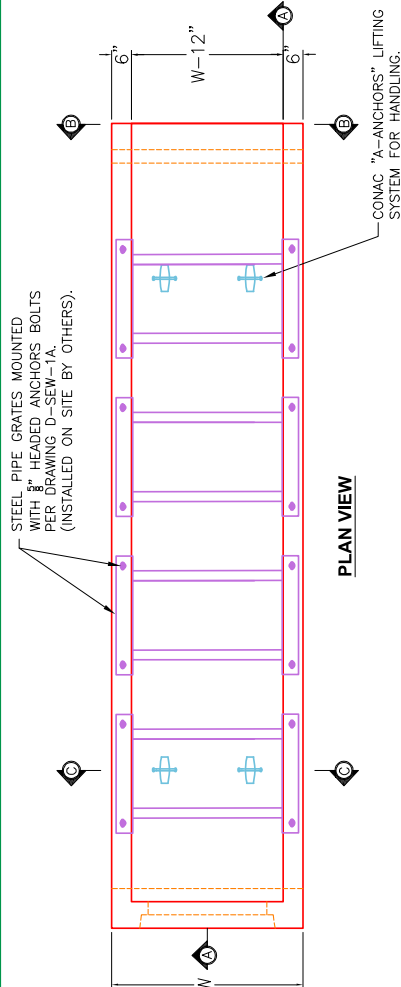
REVIEWED BY: J.H. ROSS, PE DRAWN BY: N. RICHARDS

WEB: WWW.ICASTING.COM SCALE: NTS

THIS DRAWING IS THE PROPERTY OF INFRASTRUCTURE PRECAST, INC. ANY USE OR DUPLICATION OF THIS DRAWING WITHOUT PRIOR AUTHORIZATION IS STRICTLY PROHIBITED.

GENERAL NOTES

- DRAWING TO BE USED FOR ALL 15" THROUGH 48" SIDE DRAIN CONCRETE ENDWALLS.
- CONCRETE: $F_c = 4,500$ PSI @ 28 DAYS.
- REINFORCING STEEL: ASTM A615, $F_y = 60,000$ PSI. SEE STD. DWGS. D-PE-15A, D-PE-18, D-PE-24A, D-PE-30A, D-PE-36A, D-PE-42A & D-PE-48A FOR BILL OF STEEL.
- SPlicing OF REINFORCEMENT IS ACCEPTABLE PROVIDED THAT A MINIMUM 21" SPlice LENGTH IS USED.
- APPROPRIATE SIZING AND LOCATIONS OF THE LIFTING INSERTS WILL BE THE RESPONSIBILITY OF INFRASTRUCTURE PRECAST, INC.
- LIFTING INSERTS SHALL BE BROUGHT OUT TO THE CONTRACTOR TO BE BROUGHT OUT PER TO THE REQUIREMENT BEING SHOWN IN STANDARD OPERATING PROCEDURE (SOP) 5.3.
- DIMENSIONAL AND REINFORCING TOLERANCES WILL BE AS SHOWN IN STANDARD OPERATING PROCEDURE (SOP) 5.3.
- PIPE OPENINGS FOR HEADWALLS ARE BASED ON REINFORCED CONCRETE PIPE WITH TYPE "B" WALL AS PER AMERICAN CONCRETE PIPE ASSOCIATION (ACPA). OUTSIDE DIAMETER + 3"-4".
- TOE WALL BACK SLOPE MAY BE CONSTRUCTED VARIABLE FROM VERTICAL UP TO 15'.



DIMENSIONS AND QUANTITIES FOR ONE ENDWALL 6:1

SIDE DRAIN DIA. (D)	CONCRETE ENDWALL DIMENSIONS				GRATE DISPLACEMENT DIMENSIONS				STRUCTURAL STEEL GRATE DIMENSIONS AND QUANTITY		STRUCT. STEEL WEIGHT	
	H	W	L1	L2	L3	L4	L5	WG	NO. REQ'D.	LBS.	LBS.	LBS.
15"	2'-11"	2'-8"	11'-2"	11'-3 3/8"	2'-2"	1'-0"	2'-1 1/8"	2'-5"	2	172	4,737	
18"	3'-2"	2'-11"	12'-8"	12'-10 1/8"	10 1/8"	1'-0"	1'-0"	2'-8"	3	269	5,833	
24"	3'-9"	3'-6"	16'-2"	16'-4 1/8"	2'-2"	1'-0"	3'-2 1/8"	3'-3"	3	296	8,848	
30"	4'-5"	4'-1"	20'-2"	20'-5 3/8"	2'-2"	1'-0"	3'-3 3/8"	3'-10"	4	694	12,880	
36"	5'-0"	4'-8"	23'-8"	23'-11 1/8"	2'-2"	1'-0"	2'-9 1/8"	4'-5"	5	975	17,186	
42"	5'-6"	5'-3"	26'-8"	27'-0 3/8"	2'-2"	1'-0"	1'-10 3/8"	5'-0"	6	1,300	21,532	
48"	6'-1"	5'-10"	30'-2"	30'-7"	2'-2"	1'-0"	1'-5"	5'-7"	7	1,669	27,092	

DIMENSIONS AND QUANTITIES FOR ONE ENDWALL 12:1

PIPE CULV. DIA.	CONCRETE ENDWALL DIMENSIONS				STRUCTURAL STEEL GRATE DIMENSIONS AND QUANTITY		STRUCT. STEEL WEIGHT	
	H	W	L1	L2	WG	NO. REQ'D.	LBS.	LBS.
18"	3'-1 1/4"	3'-1"	26'-0"	24'-1"	2'-10"	5	480	256
								11,119

SECTION A-A

SECTION C-C

ELEVATION B-B