

Job Name: 25-4559 - Lee Property Sanitary Sewers
Job Location: Leitchfield, KY
Contractor: Second Look Lawn & Landscape

PC: T. Lewis
 TECH: J. Horsley - F
 Plant: 100



Structure ID: **MH-S1 (7)**
 Spec: Sanitary
 Type: SAN.MH
 Size: 48"

Rim: 712.25'
 Invert: 707.1'
 Rim to Invert: 5.15'

Sump: 2"
 Floor (Top): 706.933'
 Floor Height: 6"

Floor (Bot): 706.433'
 Overall Height: 5.583'
 Slack: 2.8"

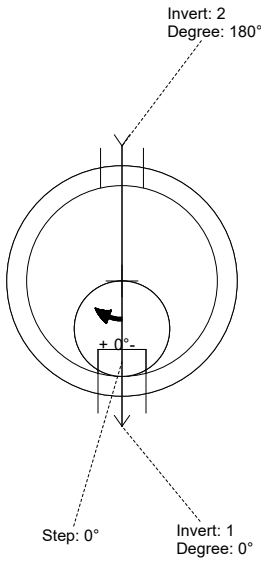
Structure Notes:

1. PER ASTM C-478 SPECIFICATIONS
2. CONCRETE: 4,000 PSI AT 28 DAYS
3. REINFORCEMENT: PER ASTM A615
4. INVERT CHANNEL REQUIRED
5. STEPS AT 0 DEGREES
6. CASTING BY ICAST (HOE MC-375-SS FRAME & COVER "SANITARY")

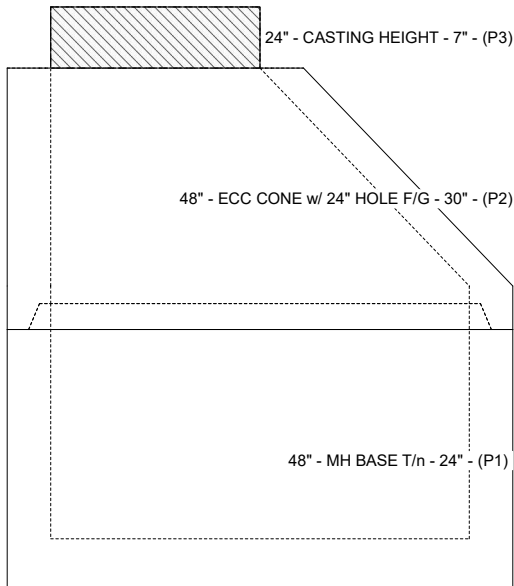
STRUCTURE SUMMARY:

- P3) 24" - CASTING HEIGHT - 7"
 - P2) 48" - ECC CONE w/ 24" HOLE F/G - 30"
 - P1) 48" - MH BASE T/n - 24"
 - 1) JOINT WRAP - 0.065"x6"x50' CONSEAL CS212
 - 1) JOINT WRAP PRIMER - CONSEAL CS-75 (1 gal.)
 - 1) 48" - MH INVERT CHANNEL - FULL HEIGHT
 - 1) CASTING - HOE MC-375-SS F/C Sanitary
 - 1) 48" - Conseal CS-102 1.00" (Double)
 - 1) PSX - 12-08 NYLO
 - 1) Quik-Lok - QL-08-C
 - 4) MH Step ML-10-TDS-NCR - 10"
- 0 lb
 2050 lb
 2921 lb
 0 lb
 0 lb
 1440 lb
 271 lb
 0 lb
 8 lb
 1 lb
 0 lb

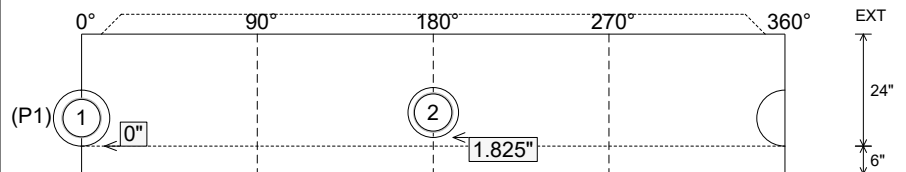
Structure Total: 6691 lb



Position	Elev	Angle	Pipe	Pipe OD	Hole	Connector	Up (L)	Ref
Rim	712.25'							
Reducer								
Invert 1	707.1'	0°	8" PVC SDR35	8.5"	12"	PSX 12-08 NYLO	0"	P1
Invert 2	707.2'	180°	8" PVC SDR35	8.5"	10.75"	Quik-Lok QL-08-C	1.825"	P1
Invert 3								
Invert 4								
Invert 5								
Invert 6								
Invert 7								
Invert 8								



Cast (Int. Dim.) - Interior Dimensions



Submittal Drawing
 12/23/2025 10:35:11 AM

SUBMITTAL
 APPROVED BY: