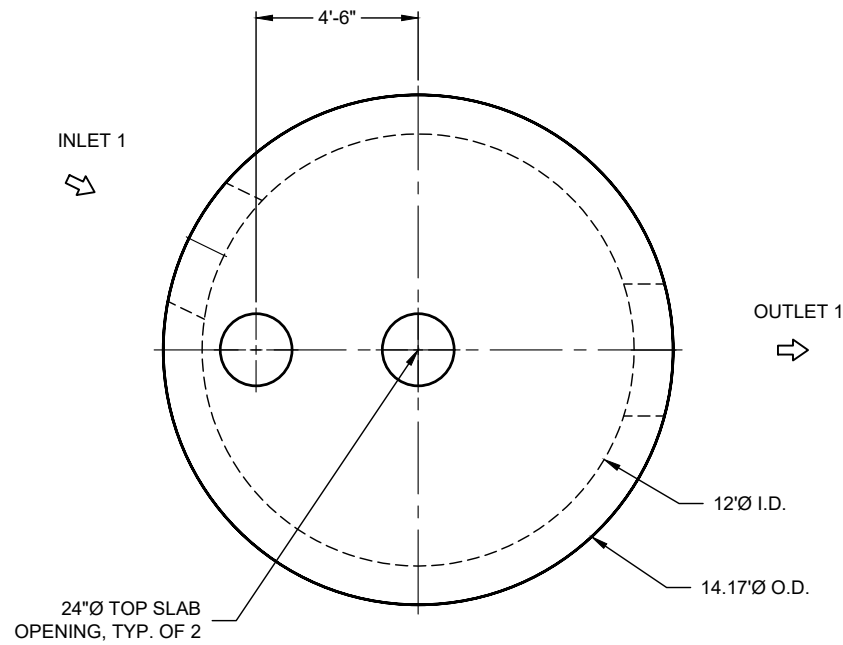
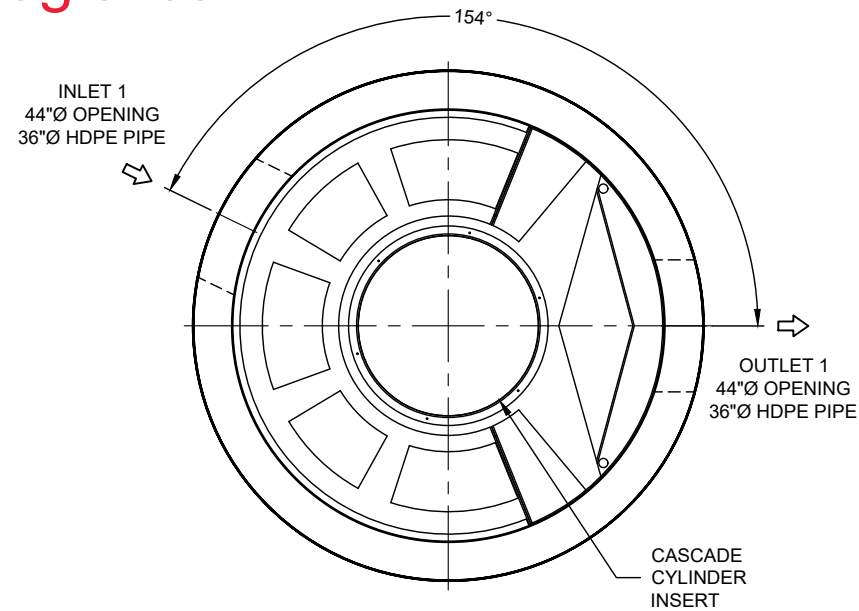


25-4539 - 863644 Airport South Logistics



PLAN VIEW



PLAN VIEW FOR PIPE ORIENTATION

TOP SLAB NOT SHOWN

INTERNAL COMPONENTS TO BE INSTALLED ON SITE BY CONTECH FIELD CONSULTANT. PRECASTER TO SHIP ALL INTERNAL COMPONENTS WITH STRUCTURE

SEE INSTALLATION NOTE A

INSTALLER TO TRIM CYLINDER TO DIMENSIONED HEIGHT

MATERIAL LIST

COUNT	DESCRIPTION	PART NUMBER	PROVIDED BY	INSTALLED BY
1	CS-12 CYLINDER INSERT, STD	325-003982	CONTECH	CONTRACTOR
1	CS-12 CYLINDER TOP	325-003988	CONTECH	CONTRACTOR
10	CS-12 ALUMINUM INSTALLATION BRACKETS	325-003971	CONTECH	PRECASTER
1	CS-12 HARDWARE KIT	325-003983	CONTECH	CONTRACTOR
1	SEALANT FOR JOINTS		PRECASTER	CONTRACTOR
2	24" X 4" FRAME AND COVER, EJ #41600389, OR EQUIV.	325-000350	CONTECH	CONTRACTOR

GENERAL NOTES

- DESIGN LOADING - AASHTO HS-20
- ALL PRECAST CONCRETE MANUFACTURED PARTS SHALL CONFORM TO ASTM C-478, WITH MINIMUM CONCRETE STRENGTH OF 4000 PSI AT 28 DAYS
- JOINT SEALANT SHALL CONFORM TO ASTM C-990 OR ASTM C-443
- GROUND WATER ELEVATION ASSUMED AT OUTLET INVERT
- MANUFACTURING TOLERANCE = +/- 1/2-INCH
- SOME HIDDEN LINES MAY BE OMITTED FOR CLARITY

INSTALLATION NOTES

- PRECASTER TO SHIP ACCESS CASTINGS WITH STRUCTURE
- REFER TO CONTECH ASSEMBLY INSTRUCTIONS FOR ADDITIONAL INFORMATION.
- PRECASTER TO INSTALL INTERNAL COMPONENTS PRIOR TO SHIPPING UNLESS INSTRUCTED OTHERWISE BY CONTECH
- PIPE OPENINGS SHALL BE STENCILED "INLET" OR "OUTLET" AS APPROPRIATE
- APPLYING ALIGNMENT MARKS ON ALL PIECES OF MULTIPLE PIECE ASSEMBLIES IS ENCOURAGED
- IF STRUCTURE IS DELIVERED IN MULTIPLE SECTIONS, EACH PIECE SHALL BE LABELED WITH THE CONTECH PROJECT NUMBER, SEQUENCE NUMBER AND SITE DESIGNATION

SITE INFORMATION

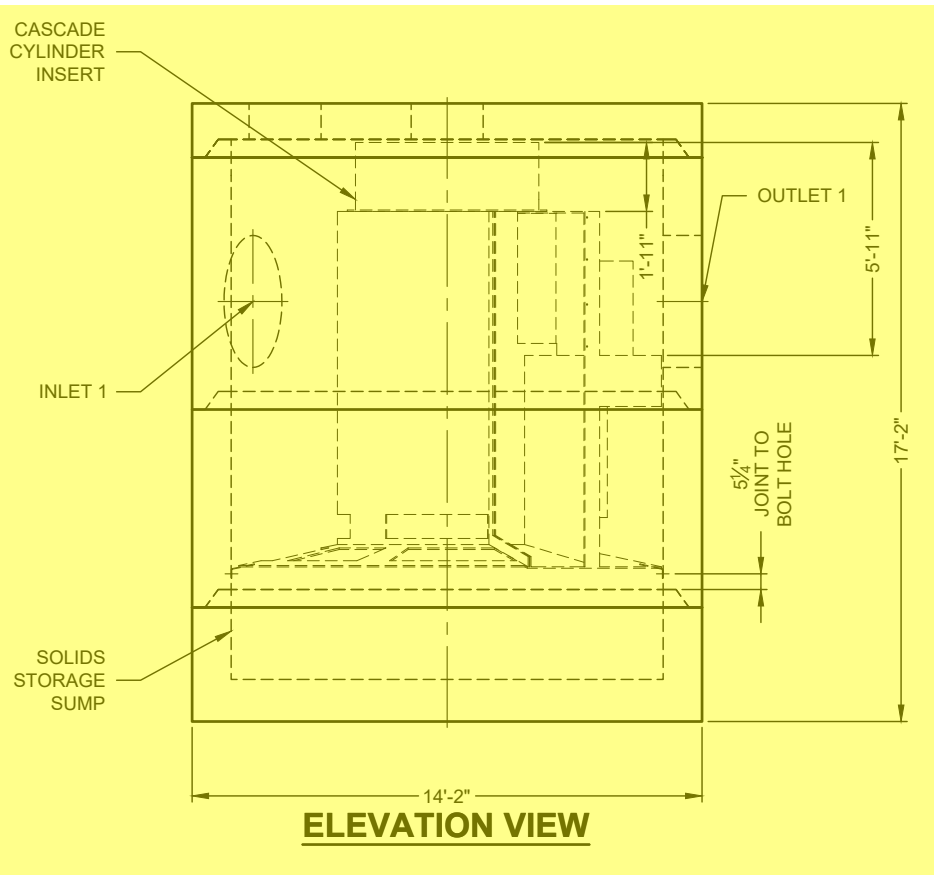
RIM ELEV. = 485.91+/-
 TOP OF STRUCTURE = 484.75
 INLET PIPE 1 INVERT ELEV. = 477.75
 INLET PIPE 1 DIAMETER AND MATERIAL = 36" HDPE
 OUTLET PIPE INVERT ELEV. = 477.75
 OUTLET PIPE DIAMETER AND MATERIAL = 36" HDPE
 OUTSIDE BOTTOM OF STRUCTURE ELEV. = 467.58

STRUCTURE WEIGHT

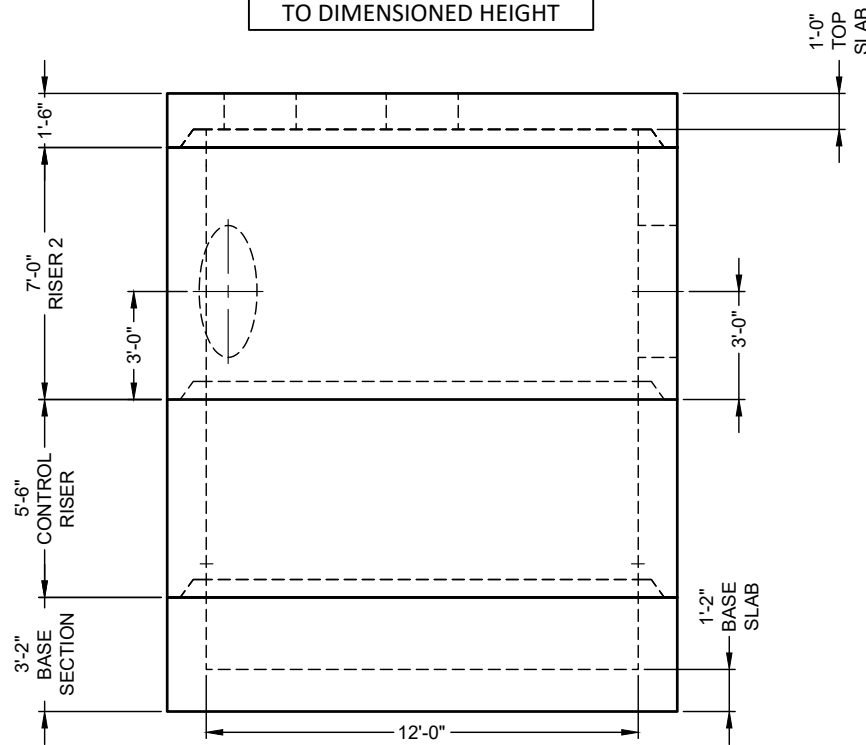
APPROXIMATE HEAVIEST PICK = 45000 LBS.
 STRUCTURE IS DELIVERED IN 4 PIECES

TOP SLAB = 25500 LBS.
 RISER 2 = 45000 LBS.
 CONTROL RISER = 39000 LBS.
 BASE SECTION = 44500 LBS.

10-CS-12
ICAST to install internal brackets
prior to shipment.



ELEVATION VIEW

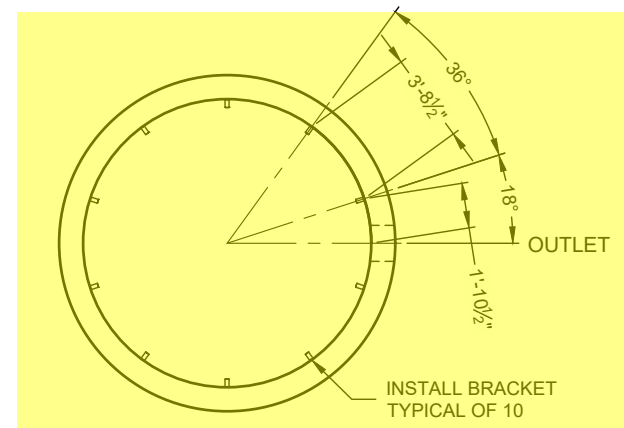


PRECAST COMPONENTS

INTERNALS NOT SHOWN

ICAST
 5888 / 757440
 LAYOUT 1A
 73.52TS

CONTECH
FABRICATION
 DRAWING



SUPPORT BRACKET LAYOUT PLAN VIEW

The design and information shown on this drawing is the property of CONTECH SOLUTIONS LLC. It is to be used only for the project and site conditions specified herein. No part of this drawing, nor any part thereof, may be used, reproduced, or transmitted in any form or by any means, electronic, mechanical, photocopying, recording, or by any information storage and retrieval system, without the prior written consent of CONTECH. Failure to comply with these terms and conditions shall constitute an acceptance of the user's own risk and CONTECH expressly disclaims any liability or responsibility for such use.

If discrepancies between the supplied information upon which the drawing is based and actual field conditions are encountered as site work progresses, these are to be resolved by the user. CONTECH shall not be held responsible for re-evaluation of the design. CONTECH accepts no liability for designs based on missing, incomplete or inaccurate information supplied by others.

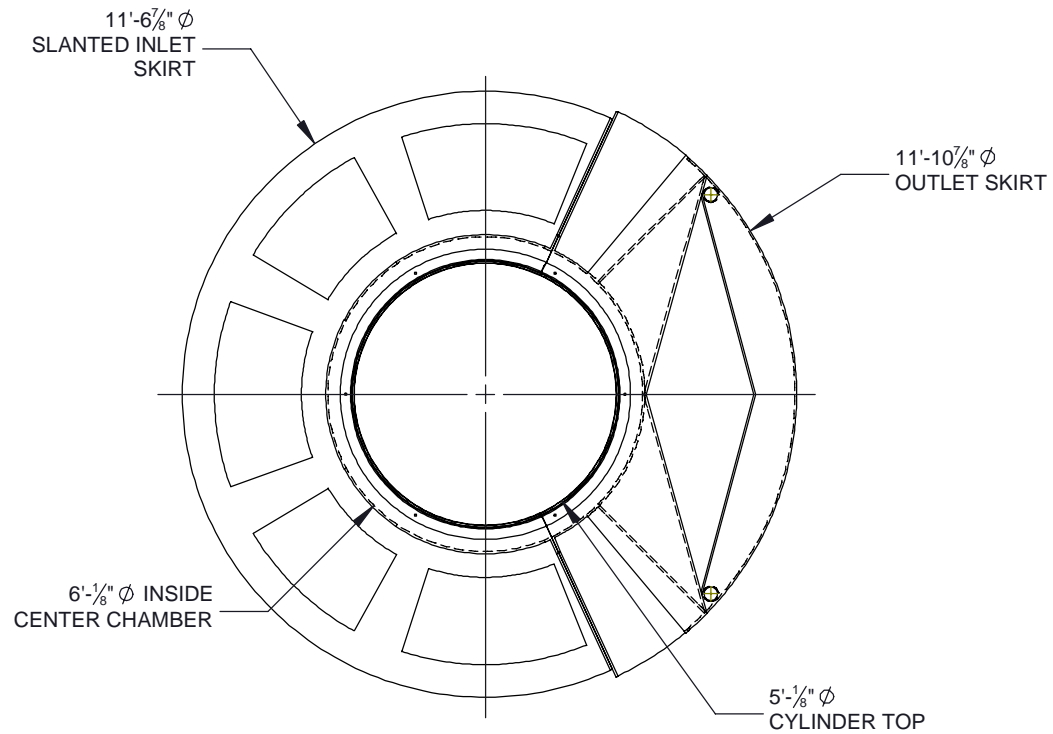
MARK	DATE	REVISION DESCRIPTION	BY

CS-12 - 863644-10
 AIRPORT SOUTH LOGISTICS - BUILDING
 A & B
 SHEPHERDSVILLE, KY
 SITE DESIGNATION: WATER QUALITY
 UNIT

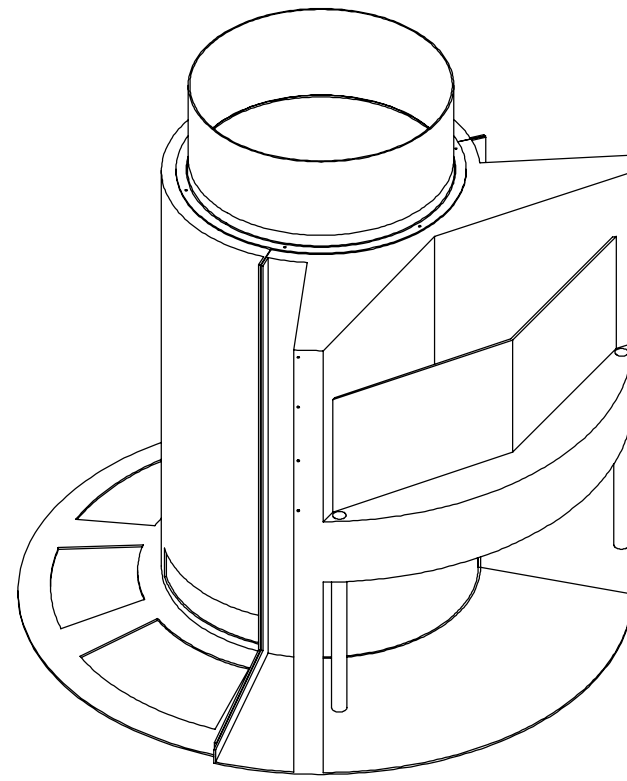
CONTECH
 ENGINEERED SOLUTIONS LLC
 A CONTECH COMPANY
 810 Centre Pointe Dr., Suite 400, West Chester, OH 45380
 800.338.1122 513.645.7000 513.645.7803 FAX
 FOR PATENT INFORMATION, GO TO www.contech.com/IP

DATE: 11/13/2025
 DESIGNED: MDB DRAWN: MDB
 CHECKED: MSB APPROVED: MDB
 PROJECT No.: 863644 SEQUENCE No.: 10
 SHEET: 1 OF 1

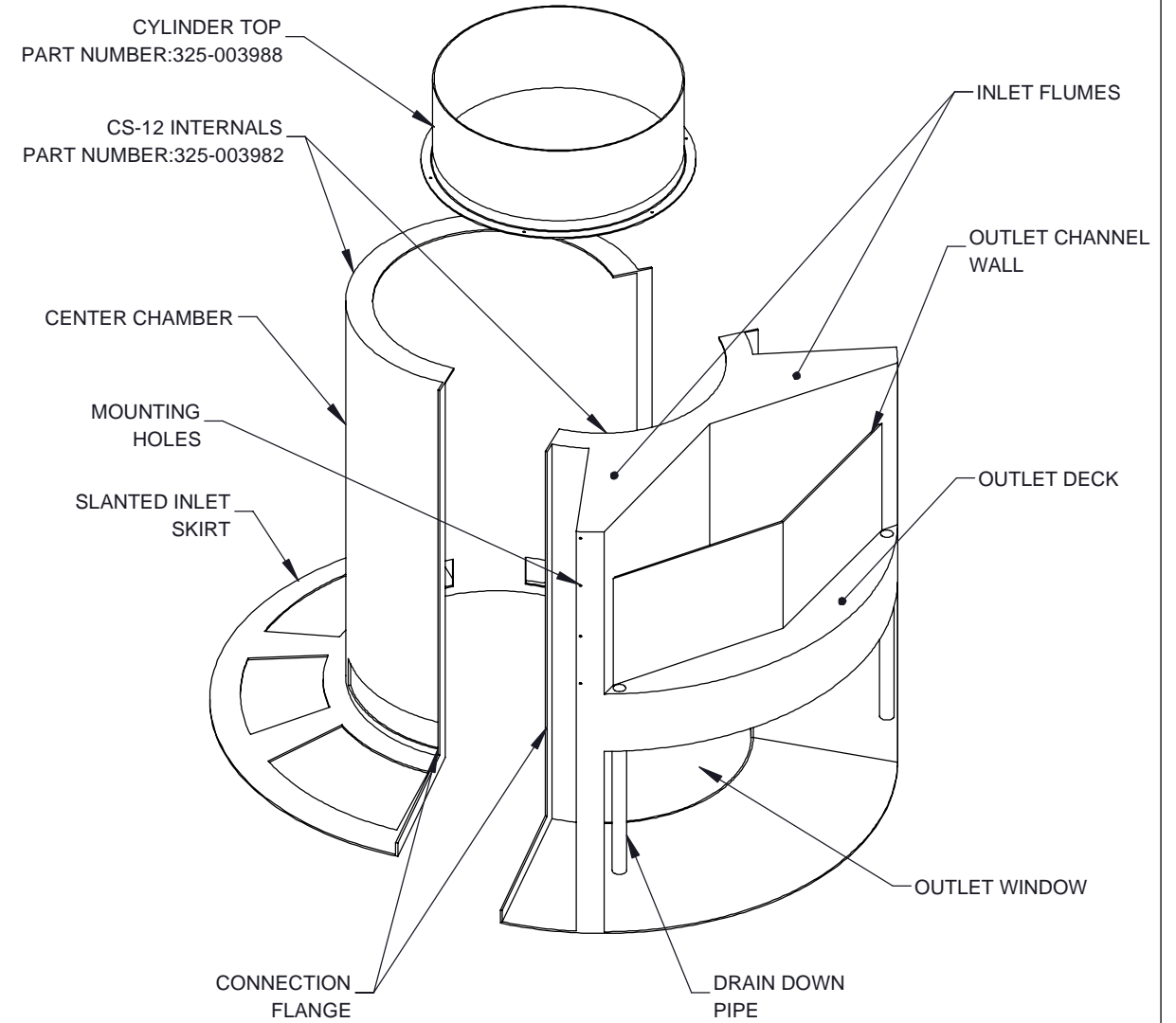
I:\QUIKRETE\NET\CONTECH\MERLIN\PROJECT\TACTIVE\863600\863644\10-CS-12-CONFAB.DWG 11/14/2025 2:25 PM



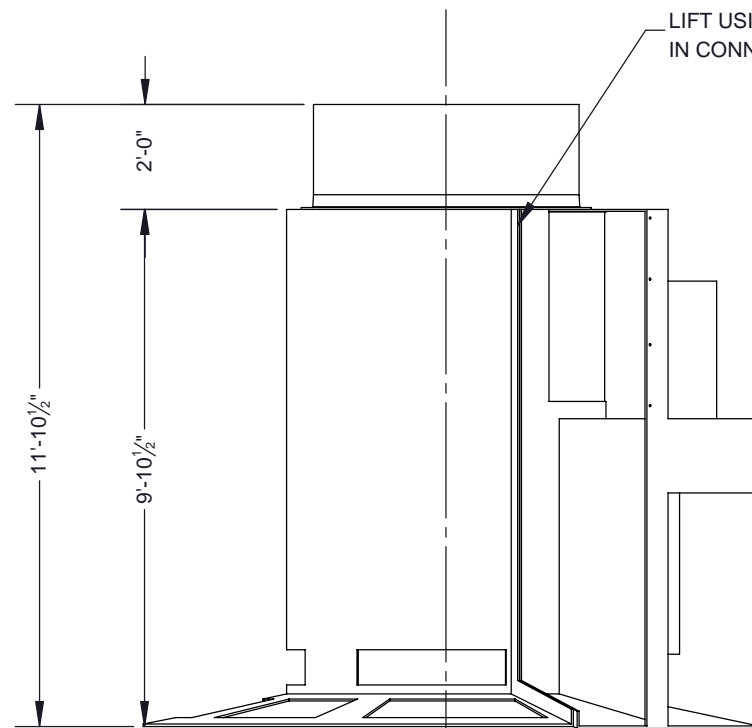
PLAN VIEW



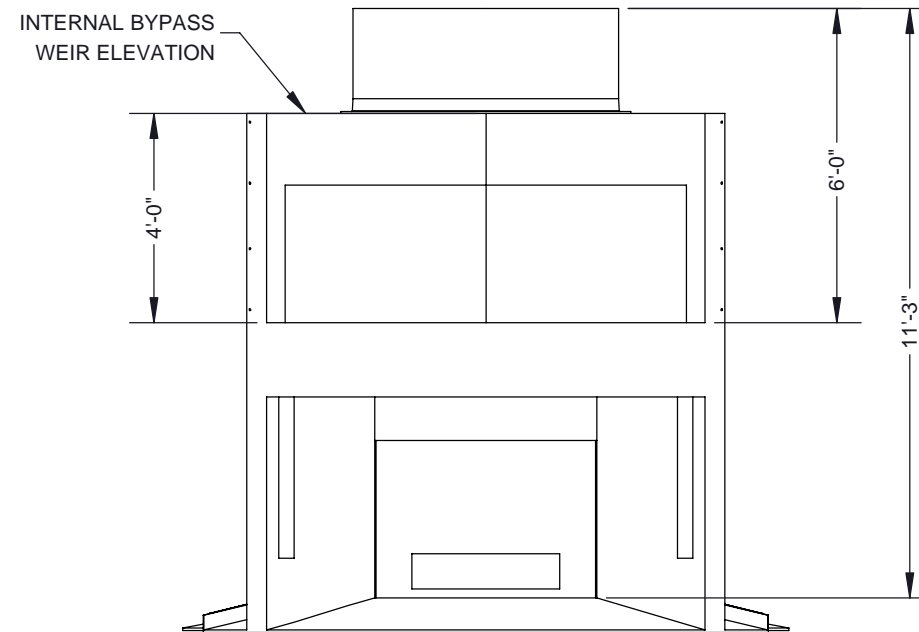
ISOMETRIC VIEW



EXPLODED ISOMETRIC VIEW



ELEVATION VIEW



ELEVATION VIEW: OUTLET SIDE

NOTES:
1. SEE CASCADE SEPARATOR INSTALLATION GUIDE FOR ADDITIONAL INFORMATION

The design and information shown on this drawing is provided as a service to the project owner, engineer and contractor by Contech Engineered Solutions LLC, or one of its affiliated companies ("Contech"). Neither this drawing, nor any part thereof, may be used, reproduced or modified in any manner without the prior written consent of Contech. Failure to comply is done at the user's own risk and Contech expressly disclaims any liability or responsibility for such use.

If discrepancies between the supplied information upon which the drawing is based and actual field conditions are encountered as site work progresses, these discrepancies must be reported to Contech immediately for re-evaluation of the design. Contech accepts no liability for designs based on missing, incomplete or inaccurate information supplied by others.

CASCADE
separator™

CONTECH
ENGINEERED SOLUTIONS LLC
www.ContechES.com

9025 Centre Pointe Dr., Suite 400, West Chester, OH 45069
800-338-1122 513-645-7000 513-645-7993 FAX

REFERENCE DETAIL
INTERNALS CS-12 &
CYLINDER TOP
CASCADE SEPARATOR

THIRD ANGLE PROJECTION

UNLESS OTHERWISE SPECIFIED
DIMENSIONS ARE IN INCHES

TOLERANCES:
FRACTIONAL $\pm 1/16$
ANGLES ± 1 DEGREE
TWO PLACE DECIMAL ± 0.06
THREE PLACE DECIMAL ± 0.030

PART NUMBER: 325-003982 & 003988		
APPROVED BY: M. BROOKS	DRAWN BY: J. BELL	REV:
APPROVED BY DATE: 2021.10.21	DRAWN BY DATE: 2021.09.16	REV: C
SCALE: N/A	SHEET 1 OF 1	