

Job Name: 25-4539 - 863644 Airport South Logistics  
 Job Location: Shepherdsville, KY  
 Contractor: Contech Engineering Solutions

Plant: Beaver Dam

12/8/2025 10:16:25 AM

Tech: J. Coppage

PC: T. Sekula



**Structure ID: 10-CS-12**

**P4 MH144LD18SP**

**MH FLAT TOP SPEC. (2 - 24"Ø HOLES)**

- P5) 24" - CASTING HEIGHT - 4"
- P4) 144" - MH FLAT TOP SPEC. (2 - 24"Ø HOLES) - 18"
- P3) 144" - MH RISER - 84"
- P2) 144" - MH RISER - 66"
- P1) 144" - MH MONOBASE 14F, Custom Ht - 24"
- 1) CVSTENCILING
- 1) ASSEMBLY REQUIRED - BRACKET INSTALLATION
- 3) 144" - Conseal CS-102 1.00"
- 2) Hole - 44

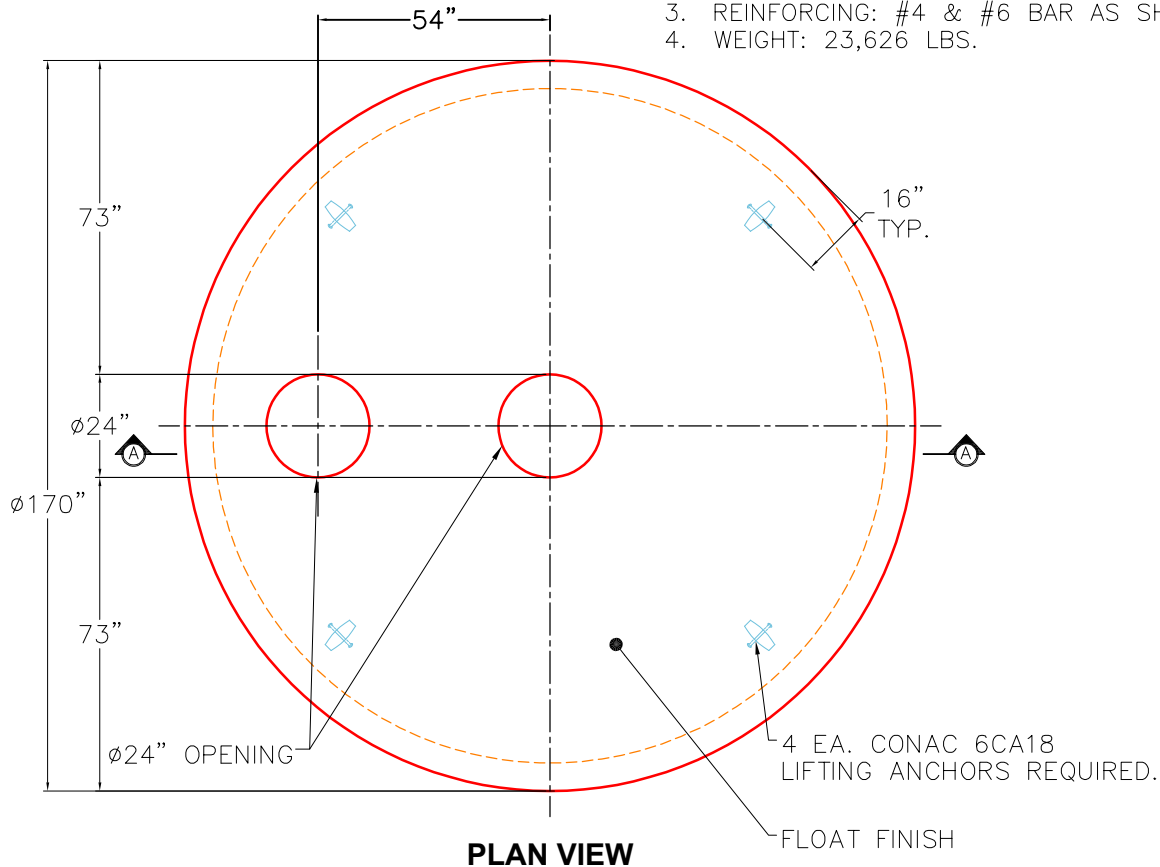
0 lb Structure Notes:  
 23623 lb (4" TALL CASTINGS PROVIDED BY OTHERS)  
 41832 lb  
 35511 lb  
 39578 lb  
 0 lb  
 0 lb  
 0 lb  
 0 lb  
 0 lb  
 Structure Total: 140544 lb

CONTECH'S LOGO AS WELL AS THE INLET AND OUTLET MUST BE STENCILED ONTO THE STRUCTURE

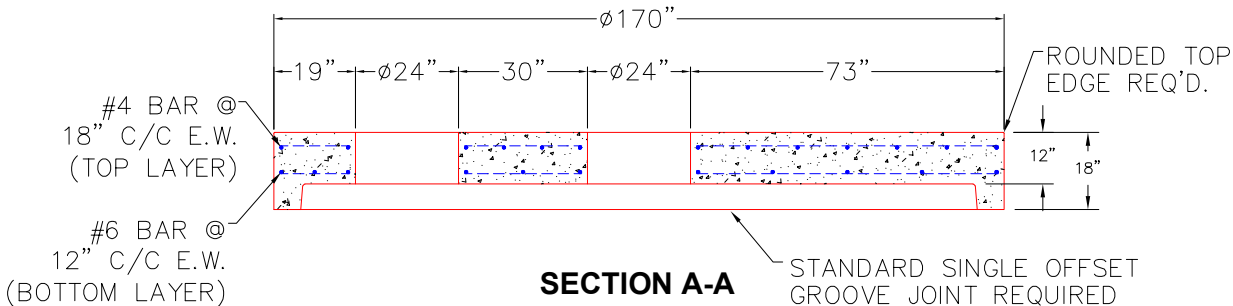
ICAST TO INSTALL THE INTERNAL BRACKETS  
 INTERNAL COMPONENTS TO BE INTALLED ON SITE BY CONTECH FIELD CONSULTANTS

GENERAL NOTES:

1. MANUFACTURED TO ASTM C-478 (LATEST REVISION).
2. CONCRETE 5,000 PSI AT 28 DAYS.
3. REINFORCING: #4 & #6 BAR AS SHOWN (GRADE 60).
4. WEIGHT: 23,626 LBS.



**PLAN VIEW**



**SECTION A-A**

Coating (Int): Coating (Ext):	Seam Up: Flat Seam Dn: Groove	Wall Thickness: 13"	Height (Ext): 18"	Weight (Net): 23623 lb Volume (Net): 6.03cu.yd
----------------------------------	----------------------------------	---------------------	-------------------	---