

Job Name: 25-4539 - 863644 Airport South Logistics
 Job Location: Shepherdsville, KY
 Contractor: Contech Engineering Solutions

Plant: Beaver Dam
 12/8/2025 10:04:36 AM

Tech: J. Coppage
 PC: T. Sekula



Structure ID: 10-CS-12

P1 MH144BVF MH MONOBASE 14F, Custom Ht

- P5) 24" - CASTING HEIGHT - 4"
- P4) 144" - MH FLAT TOP SPEC. (2 - 24"Ø HOLES) - 18"
- P3) 144" - MH RISER - 84"
- P2) 144" - MH RISER - 66"
- P1) 144" - MH MONOBASE 14F, Custom Ht - 24"
- 1) CVSTENCILING
- 1) ASSEMBLY REQUIRED - BRACKET INSTALLATION
- 3) 144" - Conseal CS-102 1.00"
- 2) Hole - 44

Structure Notes:
 (4" TALL CASTINGS PROVIDED BY OTHERS)

 CONTECH'S LOGO AS WELL AS THE INLET AND OUTLET MUST BE STENCILED ONTO THE STRUCTURE

 ICAST TO INSTALL THE INTERNAL BRACKETS INTERNAL COMPONENTS TO BE INTALLED ON SITE BY CONTECH FIELD CONSULTANTS

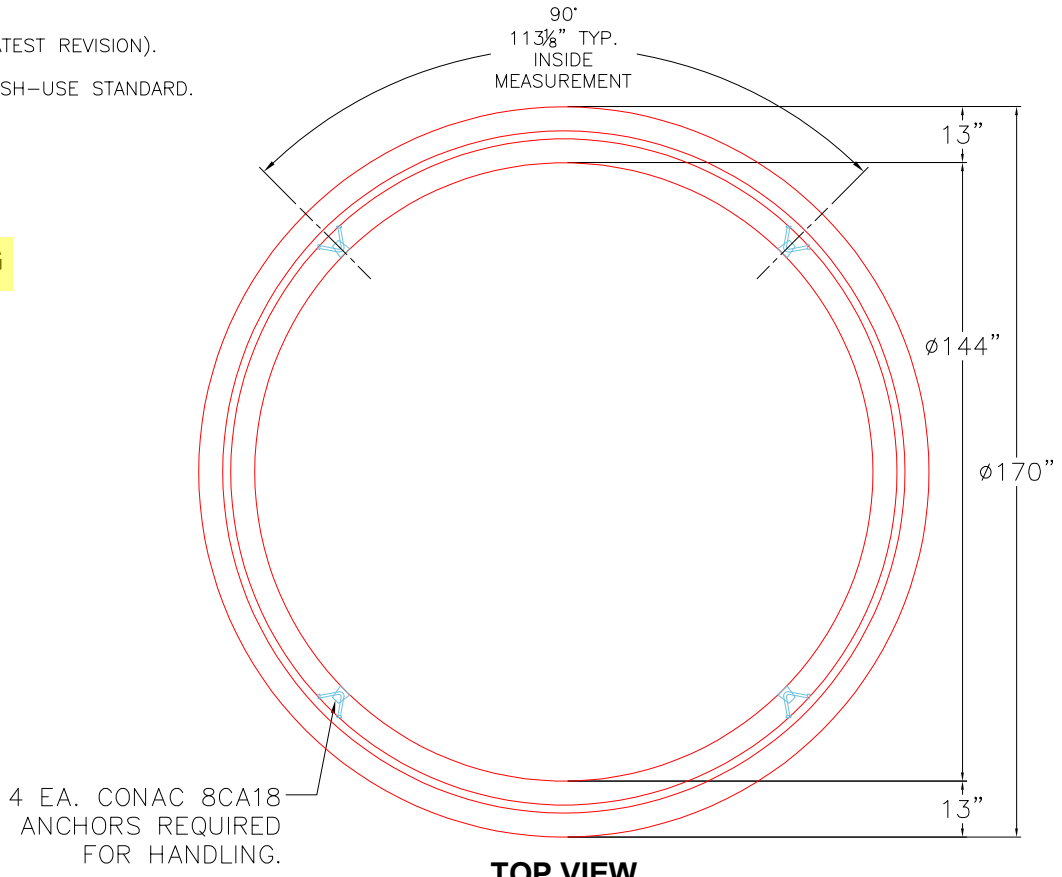
Structure Total: 140544 lb

Rim: 485.91' Rim to Invert: 8.16' Slack: 9.92" Sump: 108" Step Position:

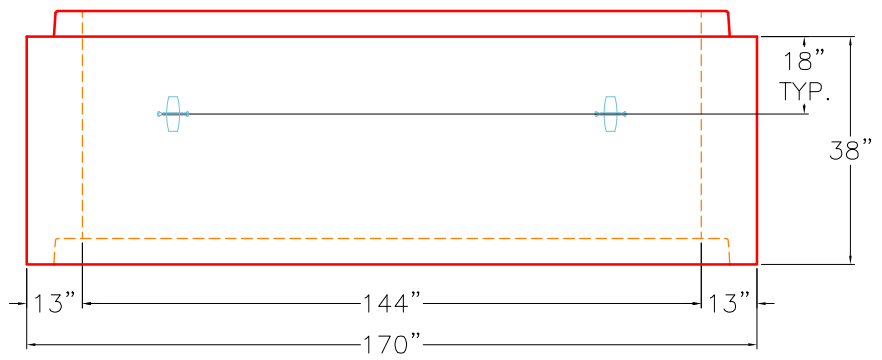
GENERAL NOTES:

1. MANUFACTURED TO ASTM C-478 (LATEST REVISION).
2. CONCRETE 5,000 PSI AT 28 DAYS.
3. REINFORCING: DOUBLE ROW WWF MESH-USE STANDARD.
4. WEIGHT: 39,578 LBS TOTAL
 FIRST POUR: 20,446 LBS
 SECOND POUR: 19,132 LBS

FIRST POUR DRAWING



TOP VIEW



FRONT VIEW

Coating (Int): Coating (Ext):	Seam Up: Tongue Seam Dn: n/a	Wall Thickness: 13" Floor Height: 14"	Height (Int): 24" Height (Ext): 38"	Weight (Net): 39578 lb Volume (Net): 10.11cu.yd
----------------------------------	---------------------------------	--	--	--

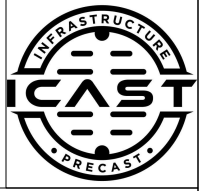
Job Name: 25-4539 - 863644 Airport South Logistics
 Job Location: Shepherdsville, KY
 Contractor: Contech Engineering Solutions

Plant: Beaver Dam

Tech: J. Coppage

12/8/2025 10:04:36 AM

PC: T. Sekula



Structure ID: 10-CS-12

P1 MH144BVF

MH MONOBASE 14F, Custom Ht

- P5) 24" - CASTING HEIGHT - 4"
- P4) 144" - MH FLAT TOP SPEC. (2 - 24"Ø HOLES) - 18"
- P3) 144" - MH RISER - 84"
- P2) 144" - MH RISER - 66"
- P1) 144" - MH MONOBASE 14F, Custom Ht - 24"
- 1) CVSTENCILING
- 1) ASSEMBLY REQUIRED - BRACKET INSTALLATION
- 3) 144" - Conseal CS-102 1.00"
- 2) Hole - 44

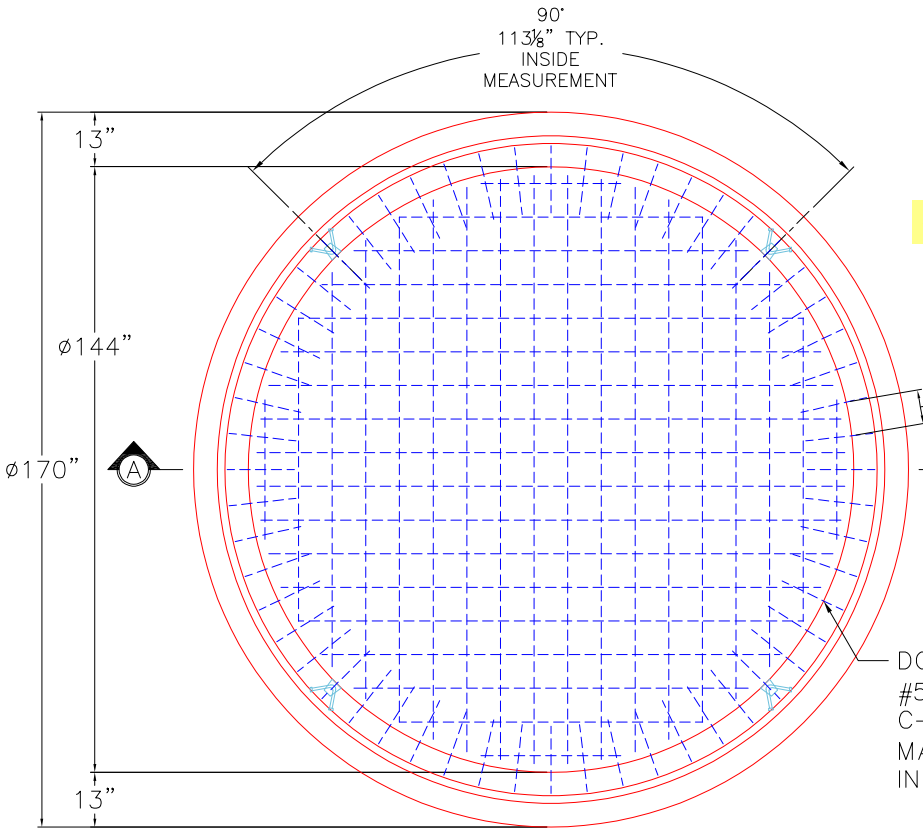
Structure Notes:
 (4" TALL CASTINGS PROVIDED BY OTHERS)

 CONTECH'S LOGO AS WELL AS THE INLET AND OUTLET MUST BE STENCILED ONTO THE STRUCTURE

 ICAST TO INSTALL THE INTERNAL BRACKETS INTERNAL COMPONENTS TO BE INTALLED ON SITE BY CONTECH FIELD CONSULTANTS

Structure Total: 140544 lb

Rim: 485.91' Rim to Invert: 8.16' Slack: 9.92" Sump: 108" Step Position:



- GENERAL NOTES:
1. MANUFACTURED TO ASTM C-478 (LATEST REVISION).
 2. CONCRETE 5,000 PSI AT 28 DAYS.
 3. REINFORCING: DOUBLE ROW WWF MESH-USE STANDARD.
 4. WEIGHT: 39,578 LBS TOTAL
 FIRST POUR: 20,446 LBS
 SECOND POUR: 19,132 LBS

SECOND POUR DRAWING

DOWEL IN (112) 16" LONG #5 BAR (GRADE 60) 8" C-C TOP AND BOTTOM MAT. 4" MIN. PENETRATION INTO THE WALLS REQUIRED.

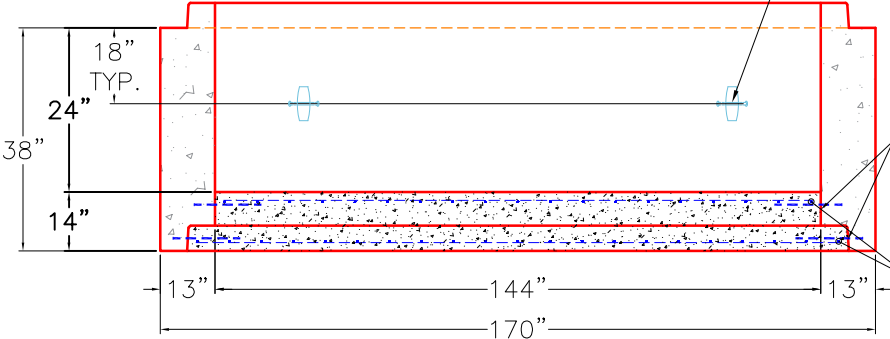
4 EA. CONAC 8CA18 ANCHORS REQUIRED FOR HANDLING.

TWO LAYERS OF CS-231 REQUIRED PRIOR TO POURING THE FLOOR

#5 BAR @ 8" C/C E.W. TOP AND BOTTOM MAT

TOP VIEW

SECTION A-A



Coating (Int): Coating (Ext):	Seam Up: Tongue Seam Dn: n/a	Wall Thickness: 13" Floor Height: 14"	Height (Int): 24" Height (Ext): 38"	Weight (Net): 39578 lb Volume (Net): 10.11cu.yd
----------------------------------	---------------------------------	--	--	--