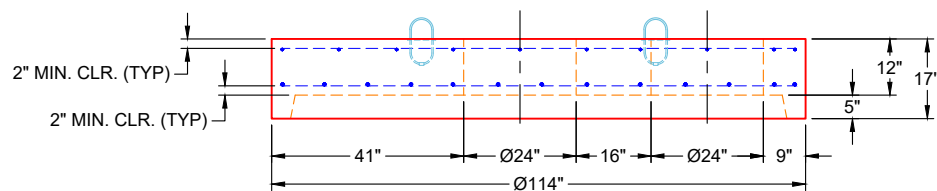


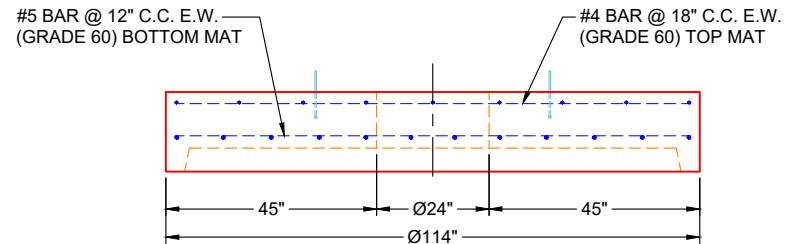
**PLAN VIEW
(RIGHT SIDE UP)**

GENERAL NOTES:


1. MANUFACTURED TO ASTM C-478 (LATEST REVISION)
2. CONCRETE: 4,500 PSI AT 28 DAYS
3. REINFORCEMENT - 2" MIN. REBAR CLEARANCE (TYP):
 - TOP MAT: #4 BAR @ 18" C.C. E.W. (GRADE 60)
 - BOTTOM MAT: #5 BAR @ 12" C.C. E.W. (GRADE 60)
4. WEIGHTS: 10,015 LBS
5. 2 EA. 4" TALL CASTINGS SUPPLIED BY OTHERS
6. LIFTERS: 4 EA. WRA016 CONAC WIRE ROPE ANCHORS FOR PLANT & FIELD HANDLING
7. TOP SURFACE TO RECEIVE FLOATED FINISH



**FRONT VIEW
(RIGHT SIDE UP)**



**SIDE VIEW
(RIGHT SIDE UP)**

PRODUCTION WORK ORDER		PRODUCT I.D.: MH096LD17SP	DESCRIPTION: Ø96" MH FLAT LID, 17" HT. W/ (2) Ø24" OPENINGS		
	QUALITY CONTROL CHECKLIST <input type="checkbox"/> ALL DIMENSIONS CORRECT. <input type="checkbox"/> LIFTERS INSTALLED. <input type="checkbox"/> HOLE LOCATION(S) CORRECT. <input type="checkbox"/> REINFORCING CORRECT. <input type="checkbox"/> FINISH ON SLAB SURFACE UNIFORM. <input type="checkbox"/> OUTSIDE TOP EDGE TROWELLED. <input type="checkbox"/> GROOVE JOINT INSTALLED.	PRODUCT VIEW: RIGHT SIDE UP	CUSTOMER: CONTECH ENGINEERING SOLUTIONS		
		PLANT: BEAVER DAM, KY	PROJECT: 863626 PROJECT TAHOE		
		WEIGHT: 10,015 LBS	STRUCTURE: 90-CDS4045-8-C		
		TOP SECTION JOINT: N / A	ORDER NO: 25-4537		
		BASE SECTION JOINT: GROOVE	PE: J.H. ROSS	DRAWING: K. CARDWELL	
		QC CHECK INITIALS:	DATE: 11/21/25	SCALE: NTS	PG. 1 OF 1