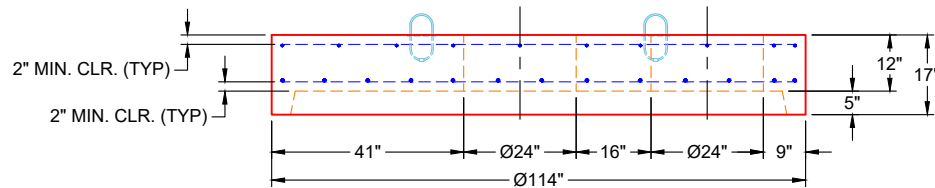


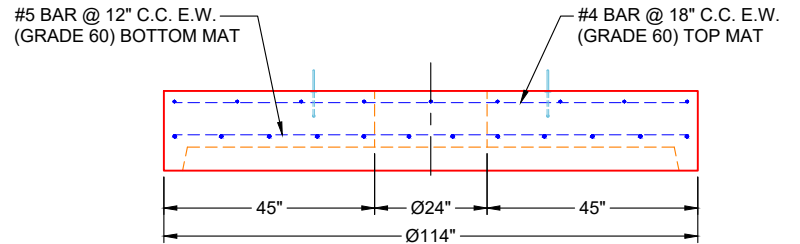
**PLAN VIEW
(RIGHT SIDE UP)**

GENERAL NOTES:

1. MANUFACTURED TO ASTM C-478 (LATEST REVISION)
2. CONCRETE: 4,500 PSI AT 28 DAYS
3. REINFORCEMENT - 2" MIN. REBAR CLEARANCE (TYP):
 - TOP MAT: #4 BAR @ 18" C.C. E.W. (GRADE 60)
 - BOTTOM MAT: #5 BAR @ 12" C.C. E.W. (GRADE 60)
4. WEIGHTS: 10,015 LBS
5. 2 EA. 4" TALL CASTINGS SUPPLIED BY OTHERS
6. LIFTERS: 4 EA. WRA016 CONAC WIRE ROPE ANCHORS FOR PLANT & FIELD HANDLING
7. TOP SURFACE TO RECEIVE FLOATED FINISH



**FRONT VIEW
(RIGHT SIDE UP)**



**SIDE VIEW
(RIGHT SIDE UP)**

PRODUCTION WORK ORDER

PRODUCT I.D.: MH096LD17SP

DESCRIPTION: Ø96" MH FLAT LID, 17" HT. W/ (2) Ø24" OPENINGS



QUALITY CONTROL CHECKLIST

- ALL DIMENSIONS CORRECT.
- LIFTERS INSTALLED.
- HOLE LOCATION(S) CORRECT.
- REINFORCING CORRECT.
- FINISH ON SLAB SURFACE UNIFORM.
- OUTSIDE TOP EDGE TROWELLED.
- GROOVE JOINT INSTALLED.

PRODUCT VIEW: RIGHT SIDE UP

CUSTOMER: CONTECH ENGINEERING SOLUTIONS

PLANT: BEAVER DAM, KY

PROJECT: 863626 PROJECT TAHOE

WEIGHT: 10,015 LBS

STRUCTURE: 85-CDS4045-8-C

TOP SECTION JOINT: N / A

ORDER NO: 25-4537

BASE SECTION JOINT: GROOVE

PE: J.H. ROSS

DRAWING: K. CARDWELL

QC CHECK INITIALS:

DATE: 11/21/25

SCALE: NTS

PG. 1 OF 1