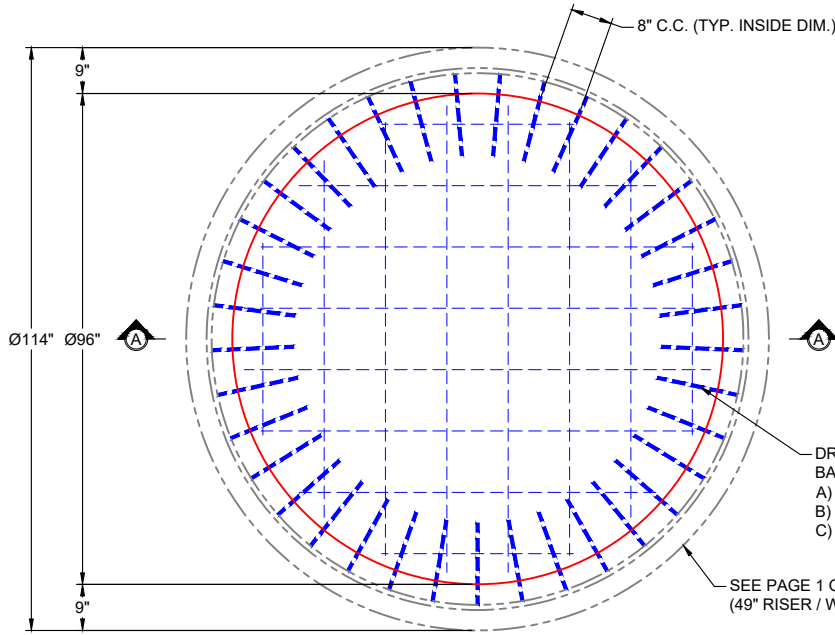
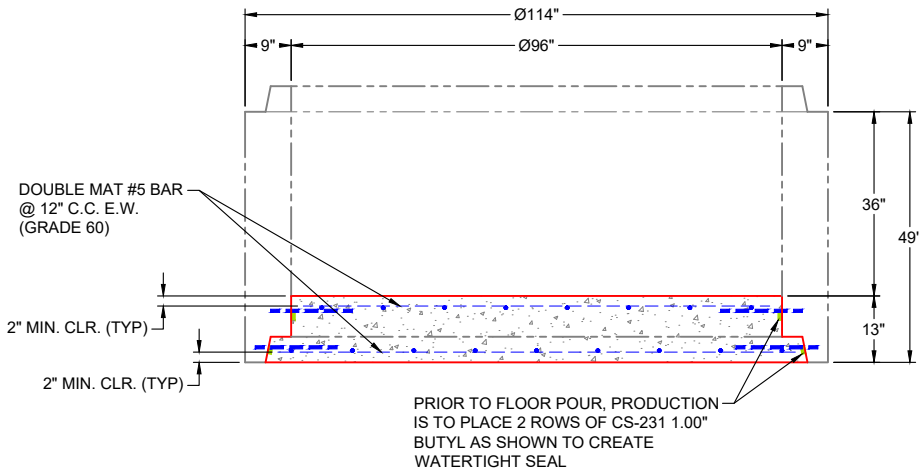


GENERAL NOTES:


1. MANUFACTURED TO ASTM C-913 (LATEST REVISION)
2. CONCRETE: 4,500 PSI AT 28 DAYS
3. REINFORCEMENT:
 - A) DRILL & DOWEL DOUBLE MAT OF 16" LONG #5 STRAIGHT BARS (GRADE 60) @ 8" C.C. TOP & BOTTOM MATS - MIN. 4" PENETRATION INTO WALLS & MIN. 2" REBAR CLEARANCE (TYP)
 - B) FLOOR MAT: DOUBLE MAT #5 BAR @ 12" C.C. E.W. (GRADE 60) - 2" MIN. REBAR CLEARANCE (TYP)
4. TOTAL WEIGHT: 20,103 LBS
 - A) FIRST POUR (49" RISER / WALLS): 12,206 LBS
 - B) SECOND POUR (13" THICK FLOOR): 7,897 LBS**
5. JOINT SEALANT: CONCRETE SEALANTS CS-102 1.00" BUTYL
6. CONTECH'S LOGO AS WELL AS INLETS & OUTLETS MUST BE STENCILED ONTO STRUCTURE
7. PRIOR TO FLOOR POUR, PRODUCTION IS TO PLACE TWO ROWS (ONE UPPER & ONE LOWER) OF CS-231 1.00" BUTYL AS SHOWN TO CREATE WATERTIGHT SEAL
8. SEE PAGE 1 OF 2 FOR FIRST POUR (49" RISER / WALLS) DETAILS



**PLAN VIEW
(RIGHT SIDE UP)**



**SECTION A-A
(RIGHT SIDE UP)**

PRODUCTION WORK ORDER		PRODUCT I.D.: MH096BAVF	DESCRIPTION: Ø96" MH MONOBASE, 36" TALL W/ 13" THICK FLOOR	
	QUALITY CONTROL CHECKLIST	PRODUCT VIEW: RIGHT SIDE UP	CUSTOMER: CONTECH ENGINEERING SOLUTIONS	
	<input type="checkbox"/> ALL DIMENSIONS CORRECT.	PLANT: BEAVER DAM, KY	PROJECT: 863626 PROJECT TAHOE	
	<input type="checkbox"/> LIFTERS INSTALLED.	WEIGHT: 20,103 LBS	STRUCTURE: 85-CDS4045-8-C	
	<input type="checkbox"/> HOLE LOCATION(S) CORRECT.	TOP SECTION JOINT: N / A	QUOTE / SALES ORDER NO: 25-4537	
	<input type="checkbox"/> REINFORCING CORRECT.	BASE SECTION JOINT: N / A	PE: J.H. ROSS	DRAWN BY: K. CARDWELL
	<input type="checkbox"/> FINISH ON SURFACE UNIFORM.	QC CHECK INITIALS:	DATE: 11/21/25	SCALE: NTS
<input type="checkbox"/> OUTSIDE TOP EDGE TROWELLED.			PG. 2 OF 2	
<input type="checkbox"/> GROOVE JOINT INSTALLED.				