

Job Name: 25-4532 Rogersville Wholesale Meter
 Job Location: Vine Grove, KY
 Contractor: Hardin County Water District No. 1

Plant: Beaver Dam
 12/22/2025 1:44:25 PM

Tech: S. Felletter
 PC: T. Lewis



Structure ID: 54532 (2)

P1 CVBVF

BOX BASE 8inW, 6inF, Variable Ht F/n

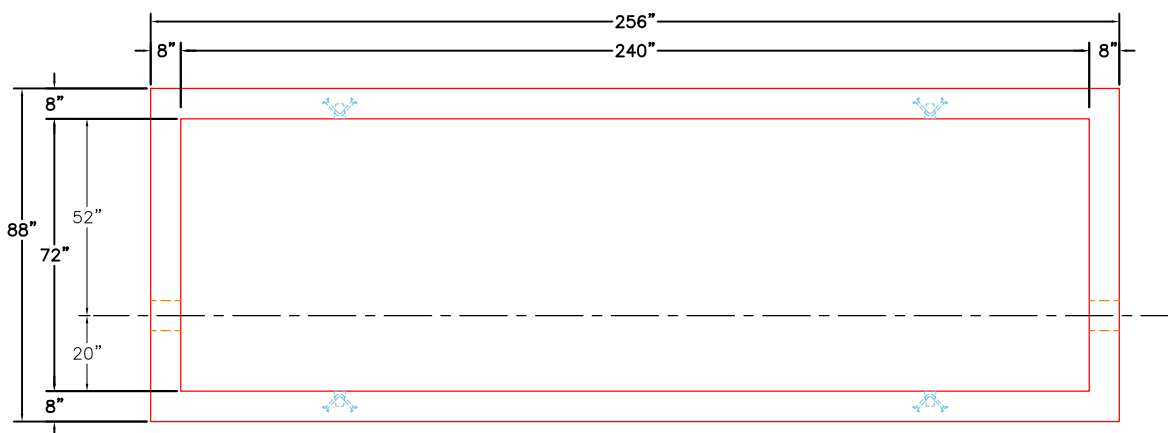
- P3) 30" x 30" - HATCH (CAST FLUSH) - 3"
- P2) 72" x 240" - BX FLAT LID 8inW w/2 HATCHES F/F - 8"
- P1) 72" x 240" - BOX BASE 8inW, 6inF, Variable Ht F/n - 60"
- 1) This Structure Includes a Cast-in Item
- 1) 30" x 30" - Conseal CS-102 1.00"
- 2) Hole - 8

Structure Notes:

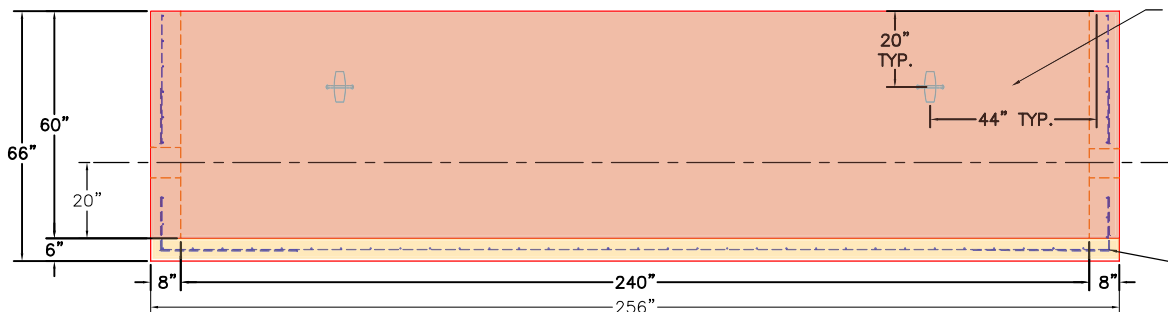
100 lb
 13915 lb
 37697 lb
 0 lb
 0 lb
 0 lb

 Structure Total: 51712 lb

Rim: 5.667' Rim to Invert: 4' Slack: 0" Sump: 20" Step Position:



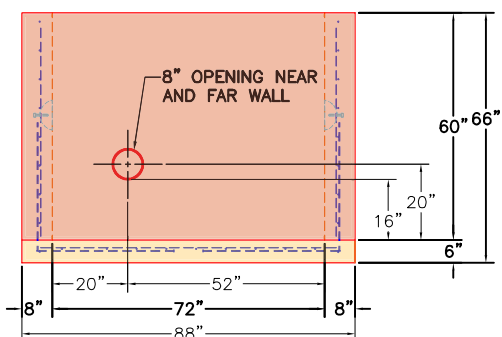
TOP VIEW



FRONT VIEW

4 EA. CONAC 8CA18 ANCHORS CAST IN THE BASE SECTION AS SHOWN FOR PLANT & FIELD HANDLING.

36" X 36" #5 BAR @ 6" ON CENTER TIED INTO THE MAT



RIGHT VIEW

GENERAL NOTES:

1. MANUFACTURED TO ASTM C-913 (LATEST REVISION).
2. CONCRETE: 5,000 PSI AT 28 DAYS.
3. REINFORCING: #5 BAR @ 12" OC E.W.
4. WEIGHT: 37,697 LBS
5. CS-102 JOINT SEALANT.

FIRST POUR DRAWING
FIRST POUR - 11,327 LBS
SECOND POUR - 26,370 LBS

Coating (Int):
 Coating (Ext):

Seam Up: Flat
 Seam Dn: n/a

Wall Thickness: 8"
 Floor Height: 6"

Height (Int): 60"
 Height (Ext): 66"

Weight (Net): 37697 lb
 Volume (Net): 9.63cu.yd

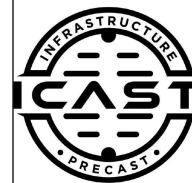
Job Name: 25-4532 Rogersville Wholesale Meter
 Job Location: Vine Grove, KY
 Contractor: Hardin County Water District No. 1

Plant: Beaver Dam

Tech: S. Felletter

12/22/2025 1:44:25 PM

PC: T. Lewis



Structure ID: 54532 (2)

P1 CVBVF

BOX BASE 8inW, 6inF, Variable Ht F/n

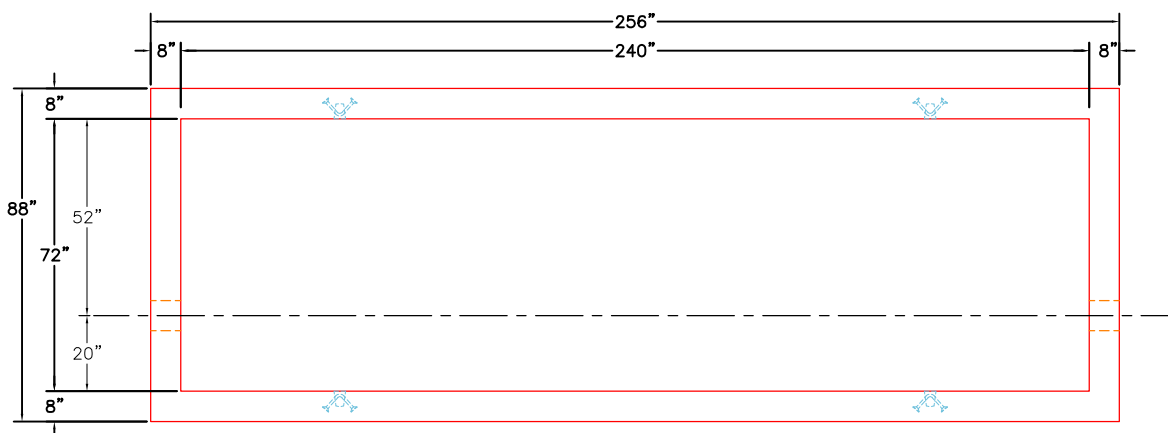
- P3) 30" x 30" - HATCH (CAST FLUSH) - 3"
- P2) 72" x 240" - BX FLAT LID 8inW w/2 HATCHES F/F - 8"
- P1) 72" x 240" - BOX BASE 8inW, 6inF, Variable Ht F/n - 60"
- 1) This Structure Includes a Cast-in Item
- 1) 30" x 30" - Conseal CS-102 1.00"
- 2) Hole - 8

Structure Notes:

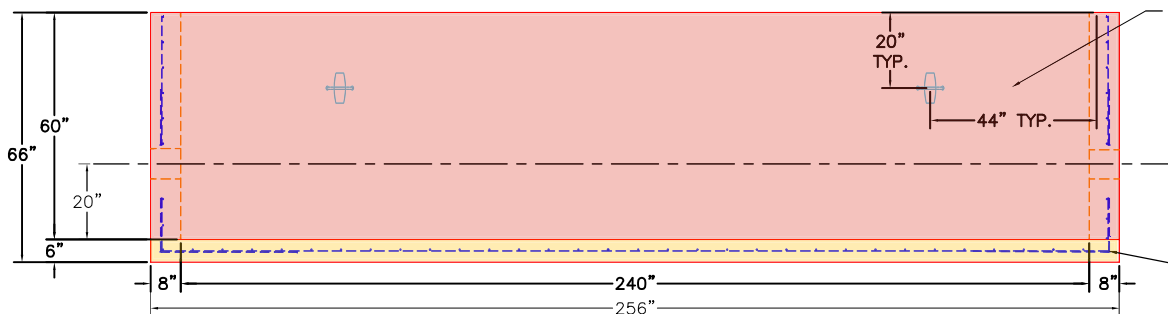
100 lb
 13915 lb
 37697 lb
 0 lb
 0 lb
 0 lb

 Structure Total: 51712 lb

Rim: 5.667' Rim to Invert: 4' Slack: 0" Sump: 20" Step Position:



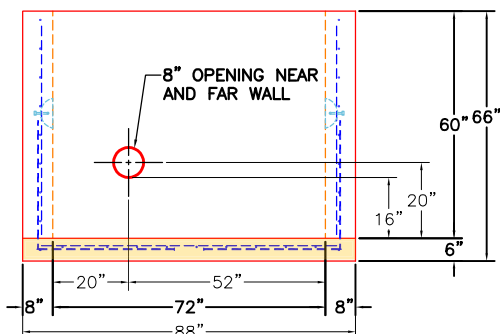
TOP VIEW



FRONT VIEW

4 EA. CONAC 8CA18 ANCHORS CAST IN THE BASE SECTION AS SHOWN FOR PLANT & FIELD HANDLING.

36" X 36" #5 BAR @ 6" ON CENTER TIED INTO THE MAT



RIGHT VIEW

GENERAL NOTES:

1. MANUFACTURED TO ASTM C-913 (LATEST REVISION).
2. CONCRETE: 5,000 PSI AT 28 DAYS.
3. REINFORCING: #5 BAR @ 12" OC E.W.
4. WEIGHT: 37,697 LBS
5. CS-102 JOINT SEALANT.

SECOND POUR DRAWING
FIRST POUR - 11,327 LBS
SECOND POUR - 26,370 LBS

Coating (Int):
 Coating (Ext):

Seam Up: Flat
 Seam Dn: n/a

Wall Thickness: 8"
 Floor Height: 6"

Height (Int): 60"
 Height (Ext): 66"

Weight (Net): 37697 lb
 Volume (Net): 9.63cu.yd