

Job Name: 25-4530 - Kuttawa & Eddyville Water Interconnect  
 Job Location: Kuttawa, KY  
 Contractor: D-Port Directional Drilling & Utilities

Plant: 100  
 2/19/2026 1:22:12 PM

Tech: J. Horsley - F  
 PC: T. Lewis



**Structure ID: MMV (4)**

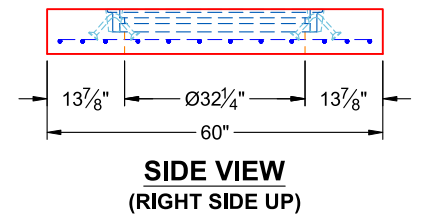
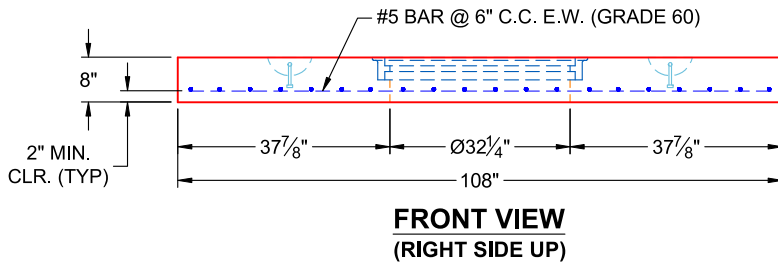
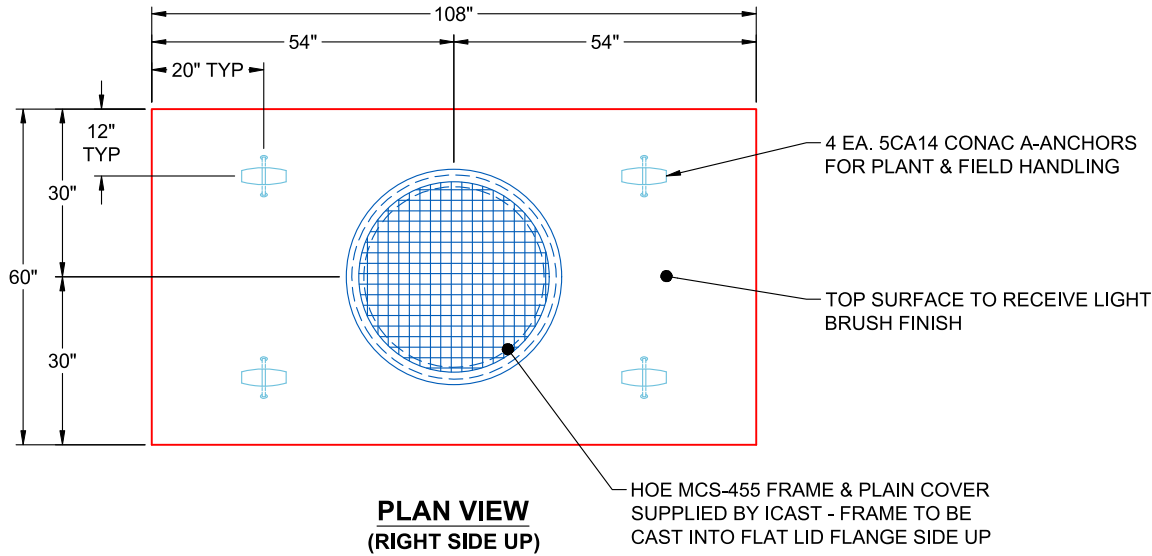
**P2 BX048096-06LD08S**

**CB FLAT TOP 6"W w/32" F/G F/F**

- P3) 32" - CASTING HEIGHT - 0"
- P2) 48" x 96" - CB FLAT TOP 6"W w/32" F/G F/F - 8"
- P1) 48" x 96" - BOX BASE 6inW, 8inF, Variable Ht F/n - 72"
- 1) SECONDARY POUR
- 1) This Structure Includes a Cast-in Item - HOE MCS-455 Frame Flange Side Up
- 1) CASTING - HOE MCS-455 F/C Plain
- 1) 48" x 96" - Conseal CS-102 1.00" (Double)
- 2) Hole - 12
- 1) Hole - 4
- 6) MH Step ML-10-TDS-NCR - 10"

	0 lb
	4080 lb
	15540 lb
	0 lb
	0 lb
	250 lb
	0 lb
	0 lb
	0 lb
	0 lb
Structure Total:	19870 lb

- Structure Notes:
1. PER ASTM C-913 SPECIFICATIONS
  2. CONCRETE: 5,000 PSI AT 28 DAYS
  3. REINFORCEMENT: #5 BAR @ 6" C.C. E.W. (GRADE 60) - 2" MIN. REBAR CLEARANCE (TYP)
  4. HOE MCS-455 FRAME & PLAIN COVER SUPPLIED BY ICAST - FRAME TO BE CAST INTO FLAT LID FLANGE SIDE UP
  5. LIFTERS: 4 EA. 5CA14 CONAC A-ANCHORS FOR PLANT & FIELD HANDLING - INSTALLED AS SHOWN
  6. TOP SURFACE TO RECEIVE LIGHT BRUSH FINISH



Coating (Int): Coating (Ext):	Seam Up: Flat Seam Dn: Flat	Wall Thickness: 6"	Height (Ext): 8"	Weight (Net): 4080 lb Volume (Net): 1.04cu.yd
----------------------------------	--------------------------------	--------------------	------------------	--

**Job Number:**

25-4530

**Job Name:**

Kuttawa & Eddyville Water  
Interconnect

**Structure:**

MMV (4)

**Note:**

HOE MCS-455 Frame Supplied By  
iCast To Be Cast Into Flat Lid Flange  
Side Up