

Job Name: 25-4530 - Kuttawa & Eddyville Water Interconnect
 Job Location: Kuttawa, KY
 Contractor: D-Port Directional Drilling & Utilities

Plant: 100
 2/19/2026 1:21:30 PM

Tech: J. Horsley - F
 PC: T. Lewis



Structure ID: MMV (4)

P1 BX4896-06W08FBAVF

BOX BASE 6inW, 8inF, Variable Ht F/n

- P3) 32" - CASTING HEIGHT - 0"
- P2) 48" x 96" - CB FLAT TOP 6"W w/32" F/G F/F - 8"
- P1) 48" x 96" - BOX BASE 6inW, 8inF, Variable Ht F/n - 72"
- 1) SECONDARY POUR
- 1) This Structure Includes a Cast-in Item - HOE MCS-455 Frame Flange Side Up
- 1) CASTING - HOE MCS-455 F/C Plain
- 1) 48" x 96" - Conseal CS-102 1.00" (Double)
- 2) Hole - 12
- 1) Hole - 4
- 6) MH Step ML-10-TDS-NCR - 10"

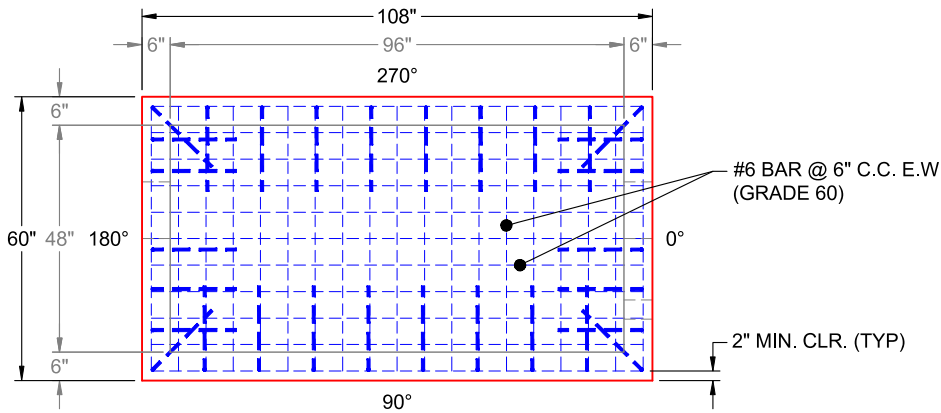
0 lb
 4080 lb
 15540 lb
 0 lb
 0 lb
 250 lb
 0 lb
 0 lb
 0 lb
 0 lb
 0 lb
 Structure Total: 19870 lb

- Structure Notes:
1. PER ASTM C-913 SPECIFICATIONS
 2. CONCRETE: 5,000 PSI AT 28 DAYS
 3. REINFORCEMENT - 2" MIN. REBAR CLEARANCE (TYP):
 - WALLS: #5 BAR @ 6" C.C. E.W. (GRADE 60)
 - FLOOR: #6 BAR @ 6" C.C. E.W. (GRADE 60)
 4. MANHOLE STEPS REQUIRED
 5. LINK-SEAL CONNECTORS SUPPLIED BY OTHERS
 6. WET STICK 18" X 36" #5 L-BARS SPACED @ 12" C.C. (GRADE 60) OUT OF FLOOR FOR WALL POUR TIE-IN (SEE L-BAR DETAIL)

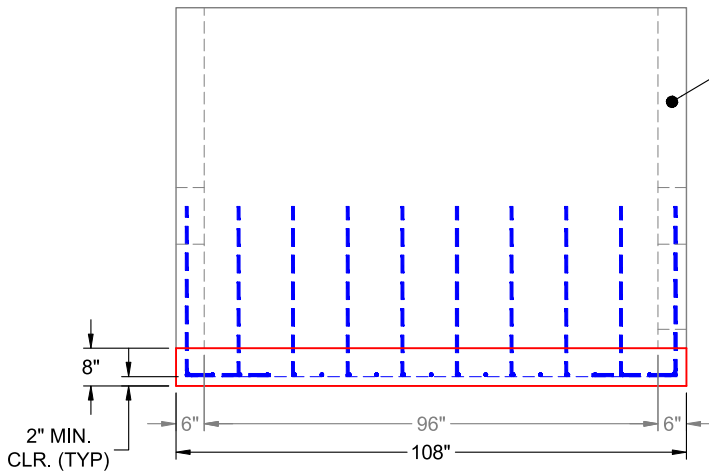
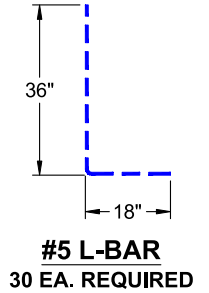
FIRST POUR (8" FLOOR): 4,350 LBS
SECOND POUR (6" WALLS): 11,190 LBS

Rim: 6.667' Rim to Invert: 6.585' Slack: 0" Sump: 0.975" Step Position: 270°

Position	Elev	Angle	Ext. (cw)	Pipe	Pipe OD	Connector	Hole	Horz Size	Up (L)	Offset
Invert 1	2'	0°	24"	8" DI	9"	Hole 12	12"	12"	22"	-6"
Invert 2	2'	180°	36"	8" DI	9"	Hole 12	12"	12"	22"	6"
Invert 3	0.081'	0°	45"	2" PVC SCH40	2.375"	Hole 4	4"	4"	0"	15"

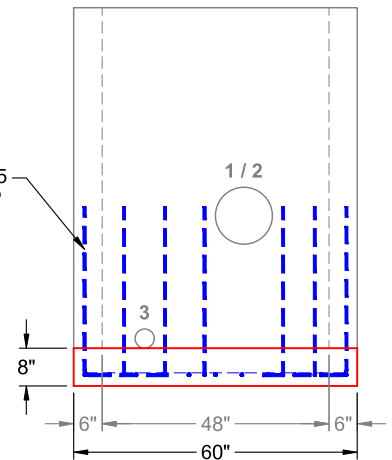


**PLAN VIEW
(RIGHT SIDE UP)**



**FRONT VIEW
(RIGHT SIDE UP)**

WET STICK 18" X 36" #5 L-BARS SPACED @ 12" C.C. (GRADE 60) OUT OF FLOOR FOR WALL POUR TIE-IN (SEE L-BAR DETAIL)



**SIDE VIEW
(RIGHT SIDE UP)**

Coating (Int):
 Coating (Ext):

Seam Up: Flat
 Seam Dn: n/a

Wall Thickness: 6"
 Floor Height: 8"

Height (Int): 72"
 Height (Ext): 80"

Weight (Net): 15540 lb
 Volume (Net): 3.97cu.yd

Job Name: 25-4530 - Kuttawa & Eddyville Water Interconnect
 Job Location: Kuttawa, KY
 Contractor: D-Port Directional Drilling & Utilities

Plant: 100

2/19/2026 1:21:30 PM

Tech: J. Horsley - F

PC: T. Lewis



Structure ID: MMV (4)

P1 BX4896-06W08FBAVF

BOX BASE 6inW, 8inF, Variable Ht F/n

- P3) 32" - CASTING HEIGHT - 0"
- P2) 48" x 96" - CB FLAT TOP 6"W w/32" F/G F/F - 8"
- P1) 48" x 96" - BOX BASE 6inW, 8inF, Variable Ht F/n - 72"
- 1) SECONDARY POUR
- 1) This Structure Includes a Cast-in Item - HOE MCS-455 Frame Flange Side Up
- 1) CASTING - HOE MCS-455 F/C Plain
- 1) 48" x 96" - Conseal CS-102 1.00" (Double)
- 2) Hole - 12
- 1) Hole - 4
- 6) MH Step ML-10-TDS-NCR - 10"

0 lb
 4080 lb
 15540 lb
 0 lb
 0 lb
 250 lb
 0 lb
 0 lb
 0 lb
 0 lb
 19870 lb

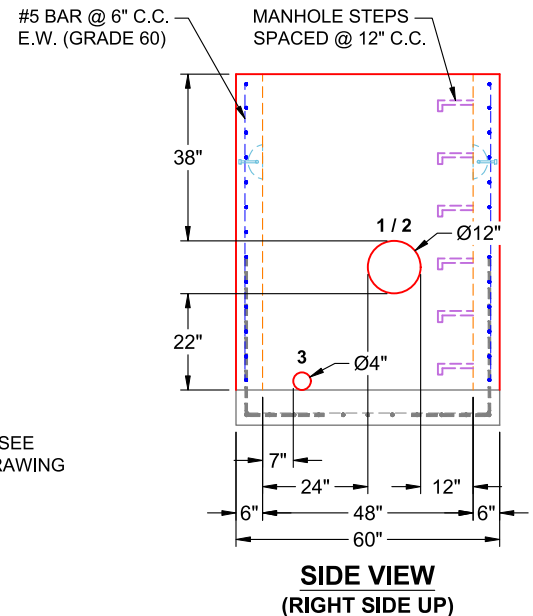
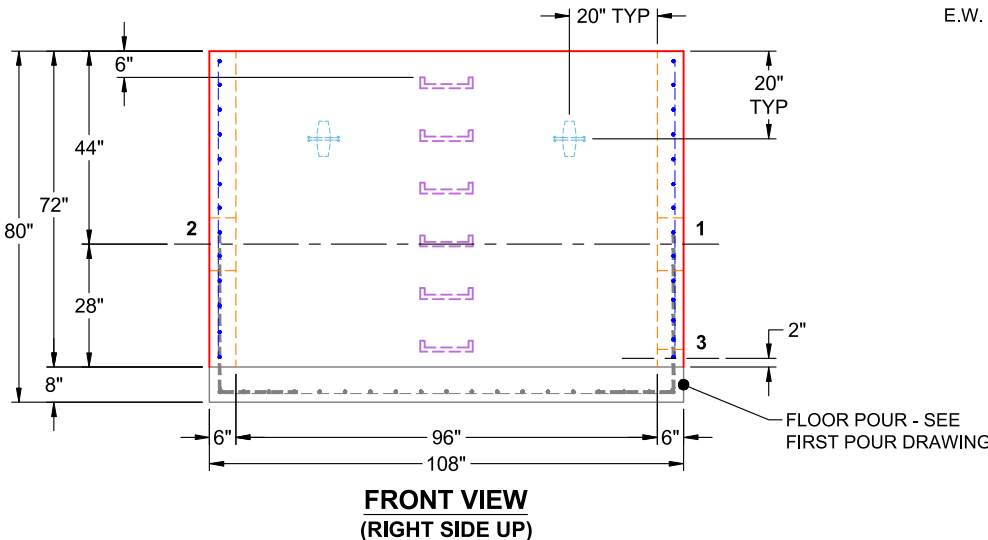
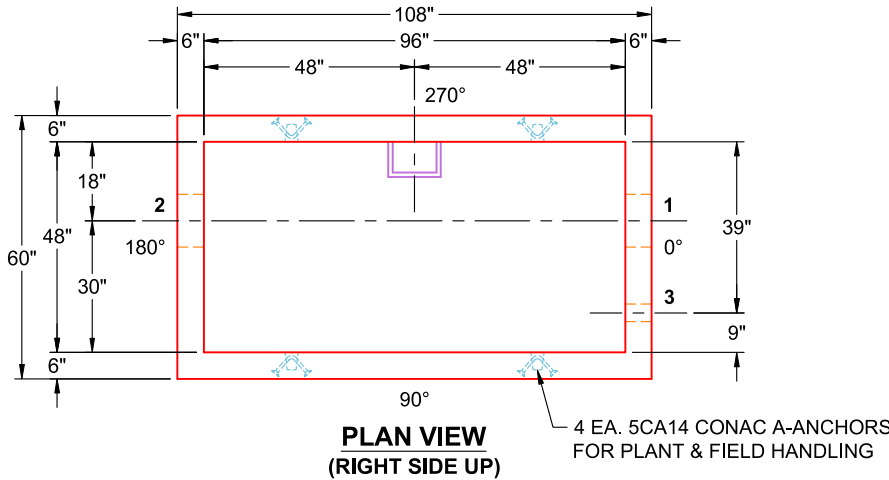
Structure Total:

- Structure Notes:
1. PER ASTM C-913 SPECIFICATIONS
 2. CONCRETE: 5,000 PSI AT 28 DAYS
 3. REINFORCEMENT - 2" MIN. REBAR CLEARANCE (TYP):
 - WALLS: #5 BAR @ 6" C.C. E.W. (GRADE 60)
 - FLOOR: #6 BAR @ 6" C.C. E.W. (GRADE 60)
 4. MANHOLE STEPS REQUIRED
 5. LINK-SEAL CONNECTORS SUPPLIED BY OTHERS
 6. LIFTERS: 4 EA. 5CA14 CONAC A-ANCHORS FOR PLANT & FIELD HANDLING - INSTALLED AS SHOWN

FIRST POUR (8" FLOOR): 4,350 LBS
SECOND POUR (6" WALLS): 11,190 LBS

Rim: 6.667' Rim to Invert: 6.585' Slack: 0" Sump: 0.975" Step Position: 270°

Position	Elev	Angle	Ext. (cw)	Pipe	Pipe OD	Connector	Hole	Horz Size	Up ()	Offset
Invert 1	2'	0°	24"	8" DI	9"	Hole 12	12"	12"	22"	-6"
Invert 2	2'	180°	36"	8" DI	9"	Hole 12	12"	12"	22"	6"
Invert 3	0.081'	0°	45"	2" PVC SCH40	2.375"	Hole 4	4"	4"	0"	15"



Coating (Int): Coating (Ext):	Seam Up: Flat Seam Dn: n/a	Wall Thickness: 6" Floor Height: 8"	Height (Int): 72" Height (Ext): 80"	Weight (Net): 15540 lb Volume (Net): 3.97cu.yd
----------------------------------	-------------------------------	--	--	---