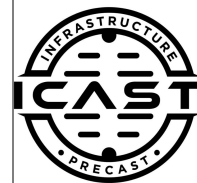


Job Name: 25-4530 - Kuttawa & Eddyville Water Interconnect
 Job Location: Kuttawa, KY
 Contractor: D-Port Directional Drilling & Utilities

Plant: 100
 2/19/2026 1:22:11 PM

Tech: J. Horsley - F
 PC: T. Lewis



Structure ID: MMV (3)

P2 CTS

BX FLAT TOP 8"W w/(2) 32" CASTINGS F/F

- P3) 32" - CASTING HEIGHT - 0"
- P2) 132" x 168" - BX FLAT TOP 8"W w/(2) 32" CASTINGS F/F - 8"
- P1) 132" x 168" - BOX BASE 8inW, 12inF, Variable Ht F/n - 72"

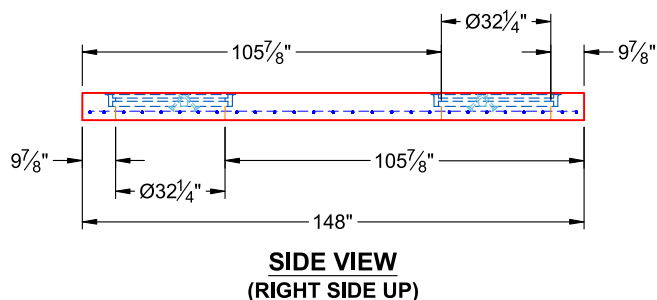
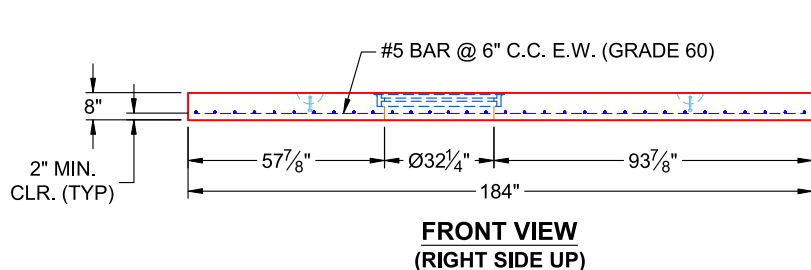
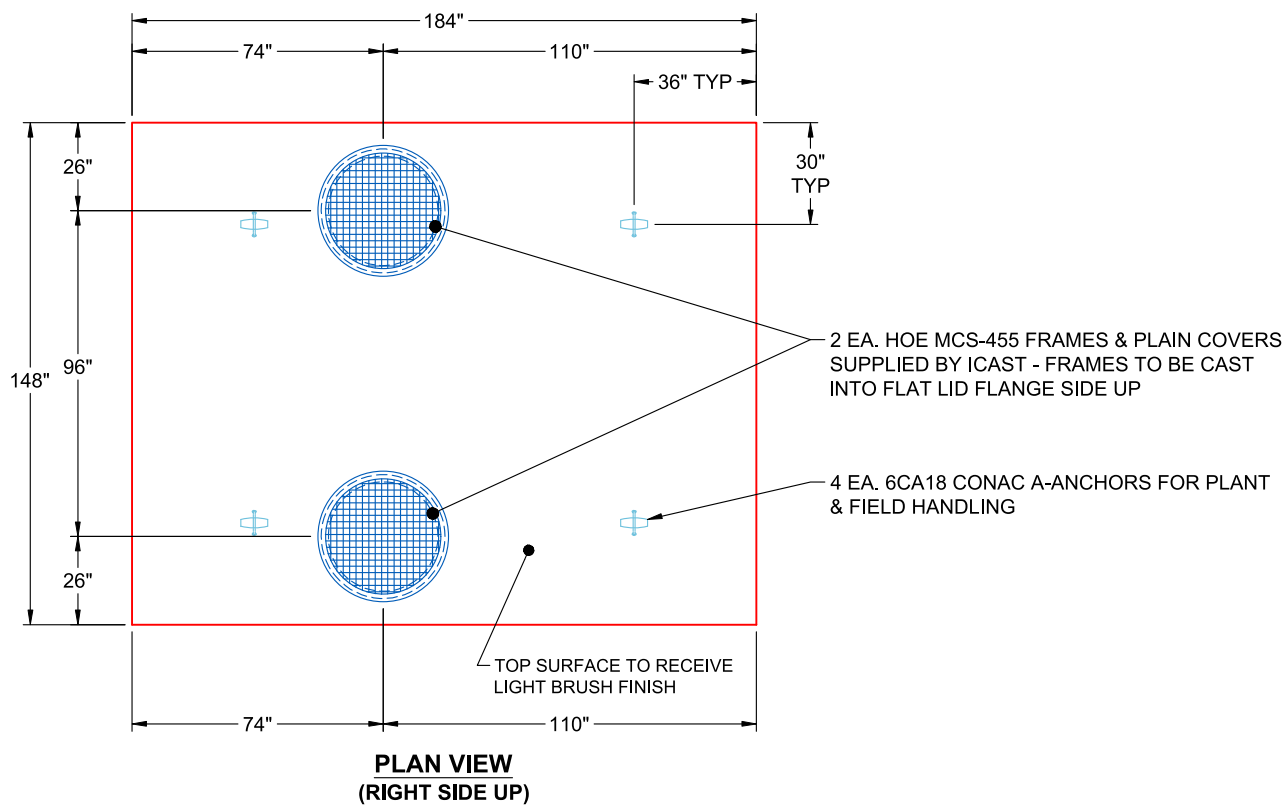
- 1) SECONDARY POUR
- 1) This Structure Includes a Cast-in Item - 2 Ea. HOE MCS-455 Frames Flange Side Up
- 2) CASTING - HOE MCS-455 F/C Plain
- 2) Hole - 12
- 1) Hole - 4
- 7) MH Step ML-10-TDS-NCR - 10"

0 lb
 17735 lb
 57807 lb
 0 lb
 0 lb
 500 lb
 0 lb
 0 lb
 0 lb

 Structure Total: 76042 lb

Structure Notes:

1. PER ASTM C-913 SPECIFICATIONS
2. CONCRETE: 5,000 PSI AT 28 DAYS
3. REINFORCEMENT: #5 BAR @ 6" C.C. E.W. (GRADE 60) - 2" MIN. REBAR CLEARANCE (TYP)
4. 2 EA. HOE MCS-455 FRAMES & PLAIN COVERS SUPPLIED BY ICAST - FRAMES TO BE CAST INTO FLAT LID FLANGE SIDE UP
5. LIFTERS: 4 EA. 6CA18 CONAC A-ANCHORS FOR PLANT & FIELD HANDLING - INSTALLED AS SHOWN
6. TOP SURFACE TO RECEIVE LIGHT BRUSH FINISH



Coating (Int):
 Coating (Ext):

Seam Up: Flat
 Seam Dn: Flat

Wall Thickness: 8"

Height (Ext): 8"

Weight (Net): 17735 lb
 Volume (Net): 4.53cu.yd

Job Number:

25-4530

Job Name:

Kuttawa & Eddyville Water
Interconnect

Structure:

MMV (3)

Note:

2 Ea. HOE MCS-455 Frames
Supplied By iCast To Be Cast Into
Flat Lid Flange Side Up