

Job Name: 25-4530 - Kuttawa & Eddyville Water Interconnect
 Job Location: Kuttawa, KY
 Contractor: D-Port Directional Drilling & Utilities

Plant: 100
 2/19/2026 1:21:27 PM

Tech: J. Horsley - F
 PC: T. Lewis



Structure ID: MMV (3)

P1 CVBVF

BOX BASE 8inW, 12inF, Variable Ht F/n

- P3) 32" - CASTING HEIGHT - 0"
- P2) 132" x 168" - BX FLAT TOP 8"W w/(2) 32" CASTINGS F/F - 8"
- P1) 132" x 168" - BOX BASE 8inW, 12inF, Variable Ht F/n - 72"
- 1) SECONDARY POUR
- 1) This Structure Includes a Cast-in Item - 2 Ea. HOE MCS-455 Frames Flange Side Up
- 2) CASTING - HOE MCS-455 F/C Plain
- 2) Hole - 12
- 1) Hole - 4
- 7) MH Step ML-10-TDS-NCR - 10"

0 lb
 17735 lb
 57807 lb
 0 lb
 0 lb
 500 lb
 0 lb
 0 lb
 0 lb

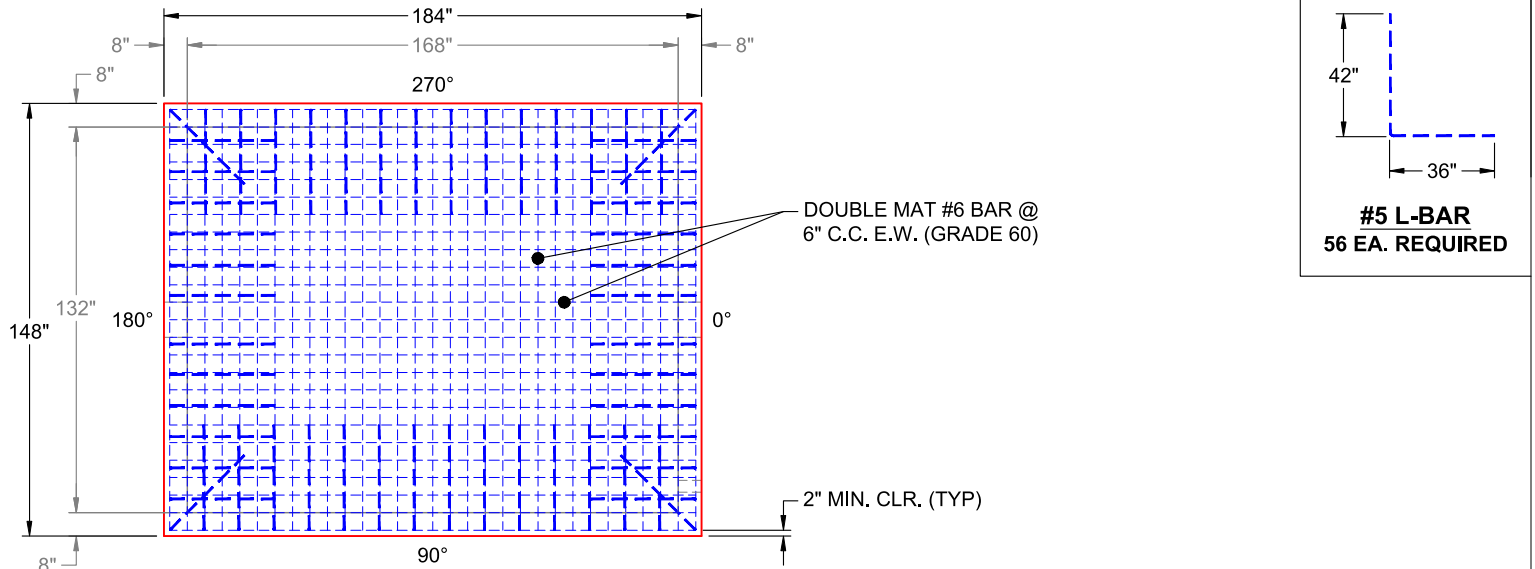
 Structure Total: 76042 lb

- Structure Notes:
1. PER ASTM C-913 SPECIFICATIONS
 2. CONCRETE: 5,000 PSI AT 28 DAYS
 3. REINFORCEMENT - 2" MIN. REBAR CLEARANCE (TYP):
 - WALLS: #5 BAR @ 6" C.C. E.W. (GRADE 60)
 - FLOOR: DOUBLE MAT #6 BAR @ 6" C.C. E.W. (GRADE 60)
 4. MANHOLE STEPS REQUIRED AT EACH CASTING
 5. LINK-SEAL CONNECTORS SUPPLIED BY OTHERS
 6. WET STICK 36" X 42" #5 L-BARS SPACED @ 12" C.C. (GRADE 60) OUT OF FLOOR FOR WALL POUR TIE-IN (SEE L-BAR DETAIL)

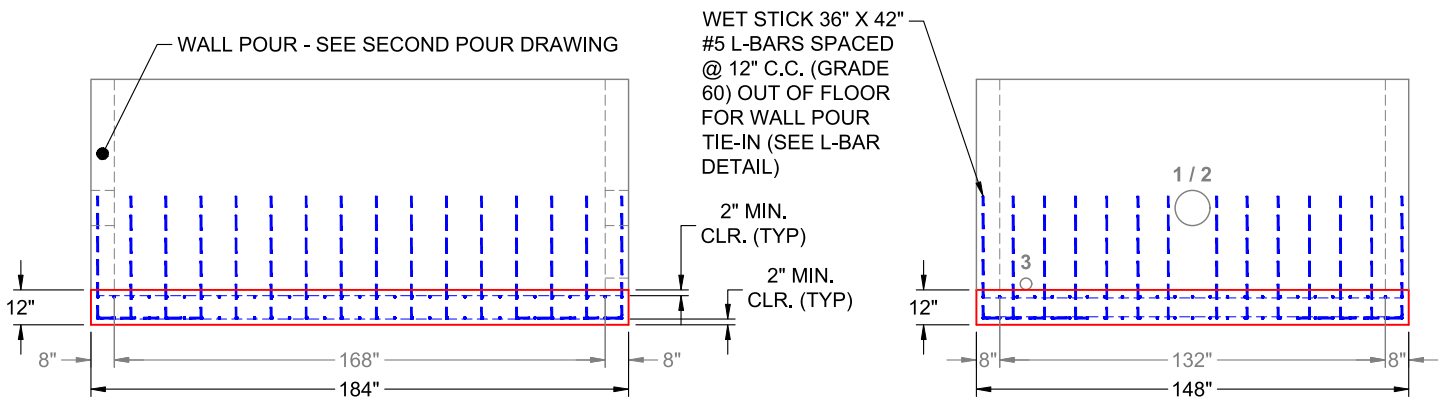
FIRST POUR (12" FLOOR): 27,421 LBS
SECOND POUR (8" WALLS): 30,386 LBS

Rim: 6.667' Rim to Invert: 6.585' Slack: 0" Sump: 0.975" Step Position: 0°

Position	Elev	Angle	Ext. (cw)	Pipe	Pipe OD	Connector	Hole	Horz Size	Up (Δ)	Offset
Invert 1	2'	0°	74"	8" DI	9"	Hole 12	12"	12"	22"	0"
Invert 2	2'	180°	74"	8" DI	9"	Hole 12	12"	12"	22"	0"
Invert 3	0.081'	0°	131"	2" PVC SCH40	2.375"	Hole 4	4"	4"	0"	57"



**PLAN VIEW
(RIGHT SIDE UP)**



**FRONT VIEW
(RIGHT SIDE UP)**

**SIDE VIEW
(RIGHT SIDE UP)**

Coating (Int): Coating (Ext):	Seam Up: Flat Seam Dn: n/a	Wall Thickness: 8" Floor Height: 12"	Height (Int): 72" Height (Ext): 84"	Weight (Net): 57807 lb Volume (Net): 14.77cu.yd
----------------------------------	-------------------------------	---	--	--

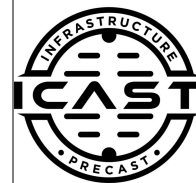
Job Name: 25-4530 - Kuttawa & Eddyville Water Interconnect
 Job Location: Kuttawa, KY
 Contractor: D-Port Directional Drilling & Utilities

Plant: 100

2/19/2026 1:21:27 PM

Tech: J. Horsley - F

PC: T. Lewis



Structure ID: MMV (3)

P1 CVBVF

BOX BASE 8inW, 12inF, Variable Ht F/n

- P3) 32" - CASTING HEIGHT - 0"
- P2) 132" x 168" - BX FLAT TOP 8"W w/(2) 32" CASTINGS F/F - 8"
- P1) 132" x 168" - BOX BASE 8inW, 12inF, Variable Ht F/n - 72"
- 1) SECONDARY POUR
- 1) This Structure Includes a Cast-in Item - 2 Ea. HOE MCS-455 Frames Flange Side Up
- 2) CASTING - HOE MCS-455 F/C Plain
- 2) Hole - 12
- 1) Hole - 4
- 7) MH Step ML-10-TDS-NCR - 10"

0 lb
 17735 lb
 57807 lb
 0 lb
 0 lb
 500 lb
 0 lb
 0 lb
 0 lb

 Structure Total: 76042 lb

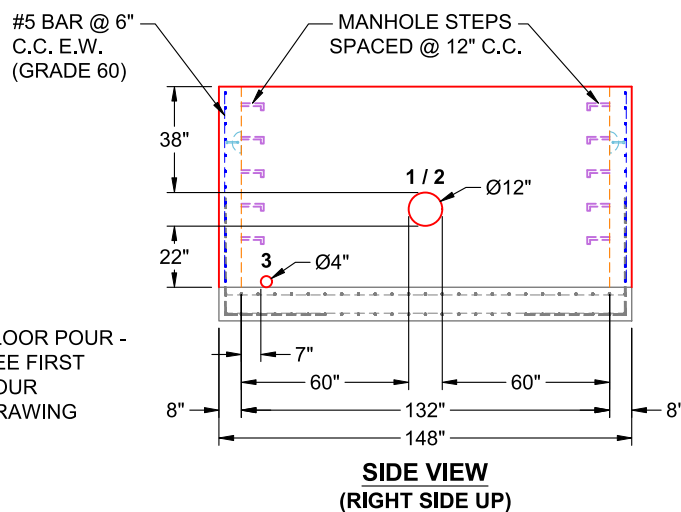
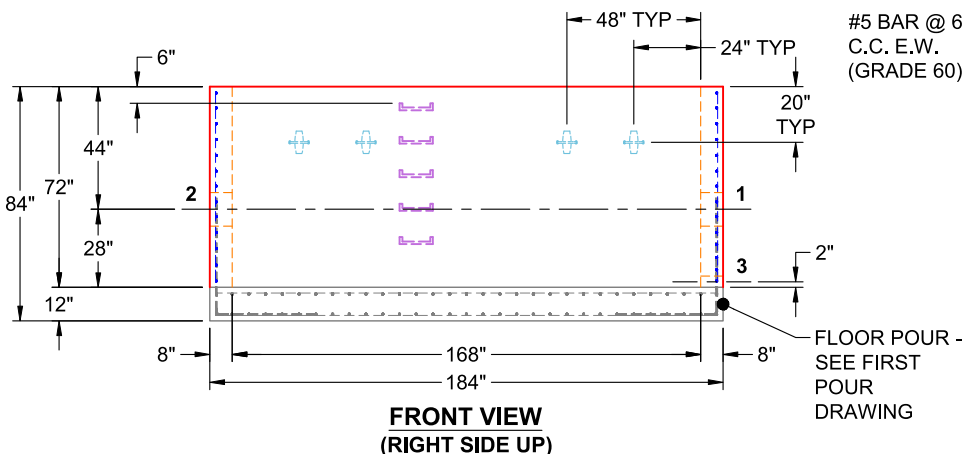
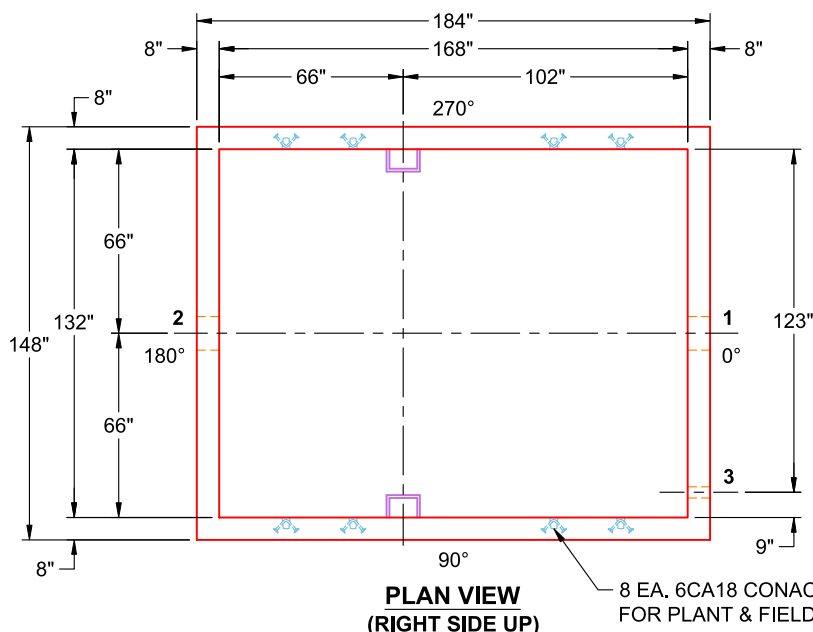
- Structure Notes:**
1. PER ASTM C-913 SPECIFICATIONS
 2. CONCRETE: 5,000 PSI AT 28 DAYS
 3. REINFORCEMENT - 2" MIN. REBAR CLEARANCE (TYP):
 - WALLS: #5 BAR @ 6" C.C. E.W. (GRADE 60)
 - FLOOR: DOUBLE MAT #6 BAR @ 6" C.C. E.W. (GRADE 60)
 4. MANHOLE STEPS REQUIRED AT EACH CASTING
 5. LINK-SEAL CONNECTORS SUPPLIED BY OTHERS
 6. LIFTERS: 8 EA. CONAC 6CA18 CONAC A-ANCHORS FOR PLANT & FIELD HANDLING - INSTALLED AS SHOWN

FIRST POUR (12" FLOOR): 27,421 LBS

SECOND POUR (8" WALLS): 30,386 LBS

Rim: 6.667' Rim to Invert: 6.585' Slack: 0" Sump: 0.975" Step Position: 0°

Position	Elev	Angle	Ext. (cw)	Pipe	Pipe OD	Connector	Hole	Horz Size	Up (↓)	Offset
Invert 1	2'	0°	74"	8" DI	9"	Hole 12	12"	12"	22"	0"
Invert 2	2'	180°	74"	8" DI	9"	Hole 12	12"	12"	22"	0"
Invert 3	0.081'	0°	131"	2" PVC SCH40	2.375"	Hole 4	4"	4"	0"	57"



Coating (Int):
 Coating (Ext):

Seam Up: Flat
 Seam Dn: n/a

Wall Thickness: 8"
 Floor Height: 12"

Height (Int): 72"
 Height (Ext): 84"

Weight (Net): 57807 lb
 Volume (Net): 14.77cu.yd