

Job Name: 25-4530 - Kuttawa & Eddyville Water Interconnect
 Job Location: Kuttawa, KY
 Contractor: D-Port Directional Drilling & Utilities

Plant: 100
 2/19/2026 1:22:08 PM

Tech: J. Horsley - F
 PC: T. Lewis



Structure ID: AR (2)

P3 MH048LD12ECC

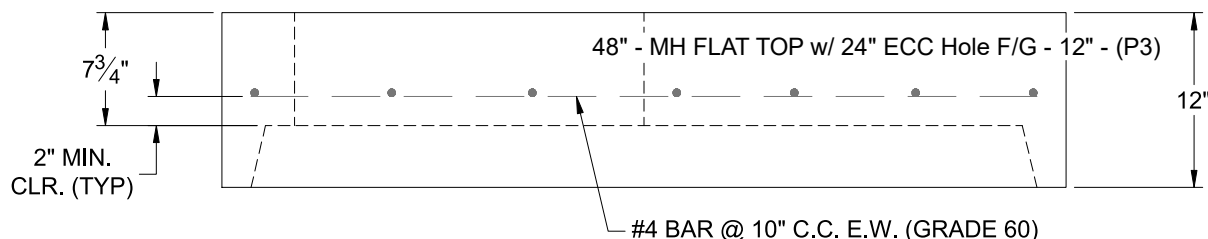
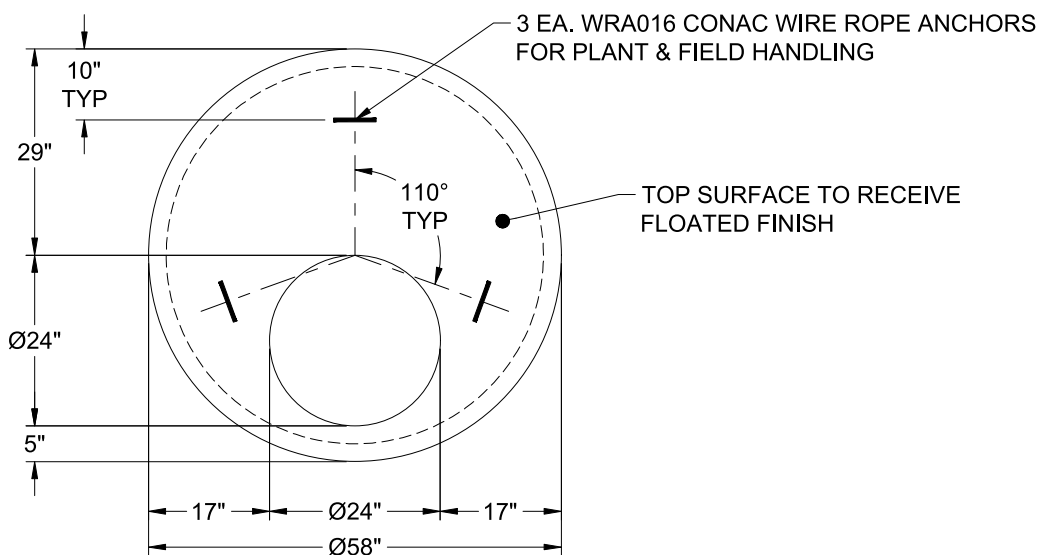
MH FLAT TOP w/ 24" ECC Hole F/G

- P5) 24" - CASTING HEIGHT - 7"
- P4) 24" - GRADE RING F/F - 3"
- P3) 48" - MH FLAT TOP w/ 24" ECC Hole F/G - 12"
- P2) 48" - MH DH RISER T/F - 48"
- P1) 48" - P.I.P. BY OTHERS - BTM SLAB F/n - 0"
- 1) CASTING - EJ 1020B Vented Cover Water
- 1) CASTING - HOE MC-315 F/C Water
- 2) 48" - Conseal CS-102 1.00" (Double)
- 2) DOGHOUSE - 12"x12"
- 4) MH Step ML-10-TDS-NCR - 10"

0 lb
 202 lb
 1561 lb
 3244 lb
 0 lb
 250 lb
 258 lb
 0 lb
 0 lb
 0 lb

 Structure Total: 5516 lb

- Structure Notes:
1. PER ASTM C-478 SPECIFICATIONS
 2. CONCRETE: 4,000 PSI AT 28 DAYS
 3. REINFORCEMENT: #4 BAR @ 10" C.C. E.W. (GRADE 60) - 2" MIN. REBAR CLEARANCE (TYP)
 4. STEPS AT 90 DEGREES
 5. HOE MC-315 FRAME & EJ 1020B VENTED COVER "WATER" SUPPLIED BY ICAST
 6. LIFTERS: 3 EA. WRA016 CONAC WIRE ROPE ANCHORS FOR PLANT & FIELD HANDLING
 7. TOP SURFACE TO RECEIVE FLOATED FINISH



Coating (Int):
 Coating (Ext):

Seam Up: Flat
 Seam Dn: Groove

Wall Thickness: 5"

Height (Ext): 12"

Weight (Net): 1561 lb
 Volume (Net): 0.42cu.yd