

**Structure ID: AR (2)**

**P2 MH048DHRS48**

**MH DH RISER T/F**

P5) 24" - CASTING HEIGHT - 7" P4) 24" - GRADE RING F/F - 3" P3) 48" - MH FLAT TOP w/ 24" ECC Hole F/G - 12" P2) 48" - MH DH RISER T/F - 48" P1) 48" - P.I.P. BY OTHERS - BTM SLAB F/n - 0" 1) CASTING - EJ 1020B Vented Cover Water 1) CASTING - HOE MC-315 F/C Water 2) 48" - Conseal CS-102 1.00" (Double) 2) DOGHOUSE - 12"x12" 4) MH Step ML-10-TDS-NCR - 10"	0 lb 202 lb 1561 lb 3244 lb 0 lb 250 lb 258 lb 0 lb 0 lb 0 lb ----- Structure Total: 5516 lb
--	---

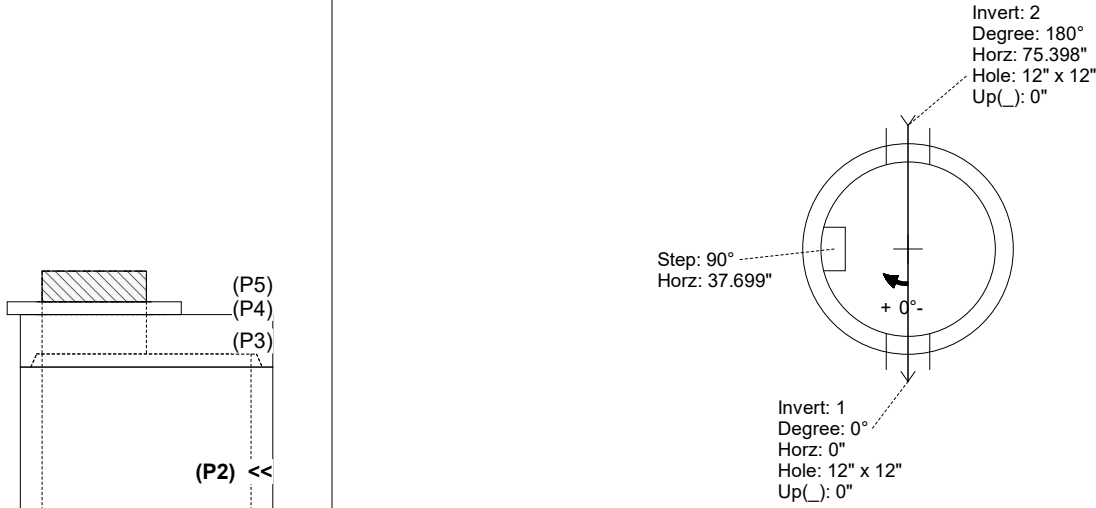
**Structure Notes:**

1. PER ASTM C-478 SPECIFICATIONS
2. CONCRETE: 4,000 PSI AT 28 DAYS
3. REINFORCEMENT: PER ASTM A615
4. STEPS AT 90 DEGREES
5. HOE MC-315 FRAME & EJ 1020B VENTED COVER "WATER" SUPPLIED BY ICAST

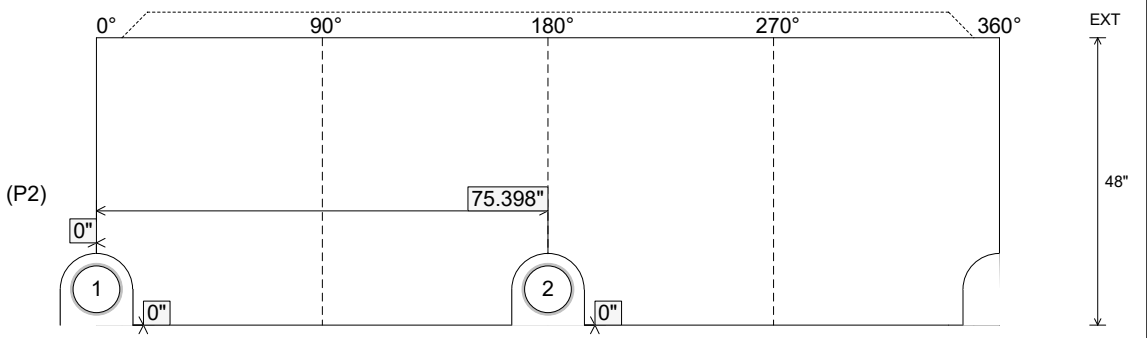
Rim: 5.67'    Rim to Invert: 5.67'    Slack: 0.14"    Sump: 2.1"    Step Position: 90°

Position	Elev	Angle	Ext. (cw)	Pipe	Pipe OD	Connector	Hole	Horz Size	Up ( )	Offset
Invert 1	0'	0°	0"	8" PVC SDR21	8.625"	DOGHOUSE 12"x12"	12" x 12"	12.129"	0"	0"
Invert 2	0'	180°	91.106"	8" PVC SDR21	8.625"	DOGHOUSE 12"x12"	12" x 12"	12.129"	0"	0"
Invert 3										
Invert 4										
Invert 5										
Invert 6										
Invert 7										
Invert 8										

**RIGHT-SIDE UP VIEW (int. dimensions)**



**INSIDE WALL DIMENSIONS**



Coating (Int): Coating (Ext):	Seam Up: Tongue Seam Dn: Flat	Wall Thickness: 5" Floor Height: 0"	Height (Int): 48" Height (Ext): 48"	Weight (Net): 3244 lb Volume (Net): 0.83cu.yd
----------------------------------	----------------------------------	--	--	--