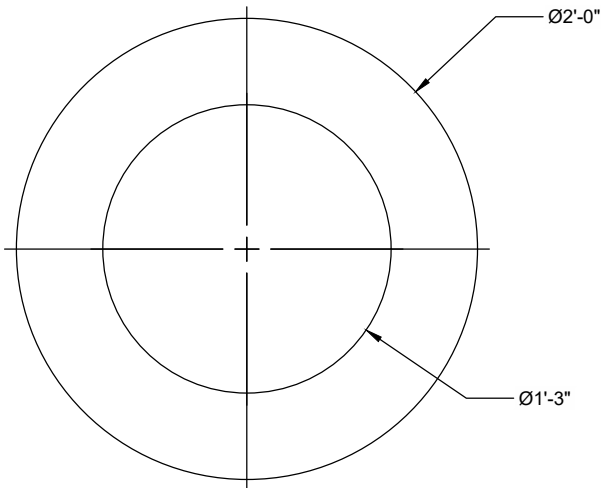
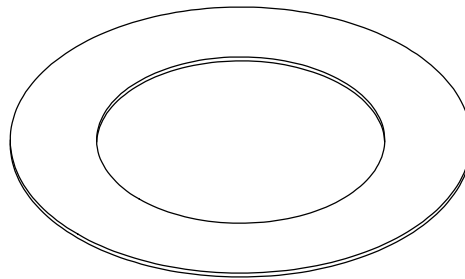


25-4514 - 828940 TOWNEPLACE SUITES

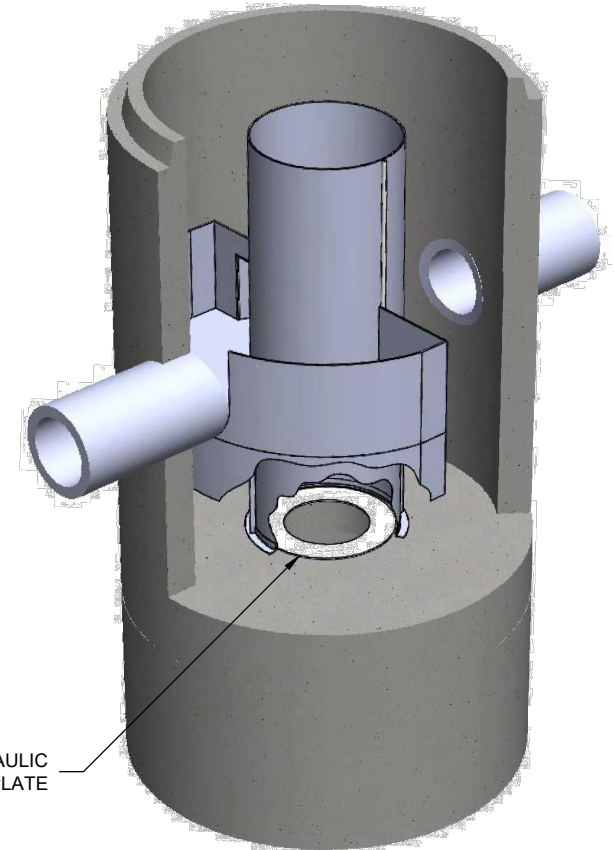
I:\COMMON\CAD\TREATMENT\22 CDS\44 FABRICATION\INTERNALS REFERENCE DETAILS\DWG\CDS 20 SERIES PVC HYDRAULIC SHEAR PLATE REF DETAIL.DWG 1/6/2023 7:52 AM



PLAN VIEW



ISOMETRIC VIEW



ELEVATION VIEW

- CONTECH WILL PROVIDE A PVC HYDRAULIC SHEAR PLATE IN ALL CDS UNITS WHICH HAVE A 2' INSIDE DIAMETER SEPARATION SCREEN (20 SERIES)
- THE PRECASTER WILL PLACE THE HYDRAULIC SHEAR PLATE ON THE SEPARATION SLAB INSIDE THE SEPARATION SCREEN PRIOR TO SHIPPING THE CDS UNIT
- IF THE HYDRAULIC SHEAR PLATE SHIFTS DURING DELIVERY AND INSTALLATION, IT IS THE RESPONSIBILITY OF THE CONTRACTOR TO ASSURE IT IS CORRECTLY REPOSITIONED PRIOR TO INSTALLING THE TOP SLAB OF THE STRUCTURE
- THE HYDRAULIC SHEAR PLATE MUST REST ON THE SEPARATION SLAB INSIDE THE SEPARATION SCREEN
- THE HYDRAULIC SHEAR PLATE SHOULD LAY FLAT AND BE ABLE TO BE REMOVED FOR SYSTEM MAINTENANCE. DO NOT FASTEN TO SEPARATION SLAB FLOOR.



THIS PRODUCT MAY BE PROTECTED BY ONE OR MORE OF THE FOLLOWING U.S. PATENTS: 5,788,848; 6,641,720; 6,511,890; 6,581,783; RELATED FOREIGN PATENTS, OR OTHER PATENTS PENDING.

CONTECH
ENGINEERED SOLUTIONS LLC
www.ContechES.com

9025 Centre Pointe Dr., Suite 400, West Chester, OH 45069

800-338-1122 513-645-7000 513-645-7993 FAX

CDS 20 SERIES
PVC HYDRAULIC SHEAR PLATE
REFERENCE DETAIL

DATE: 4/6/16

SCALE: NONE

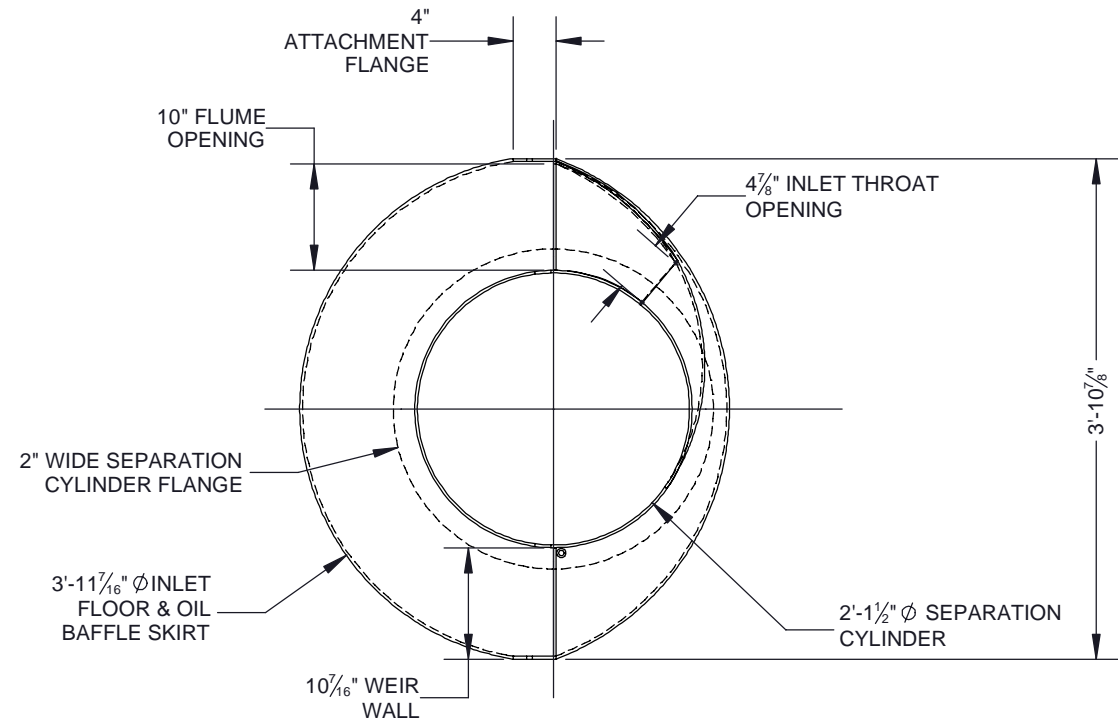
PROJECT No.: N/A

SEQUENCE No.: N/A

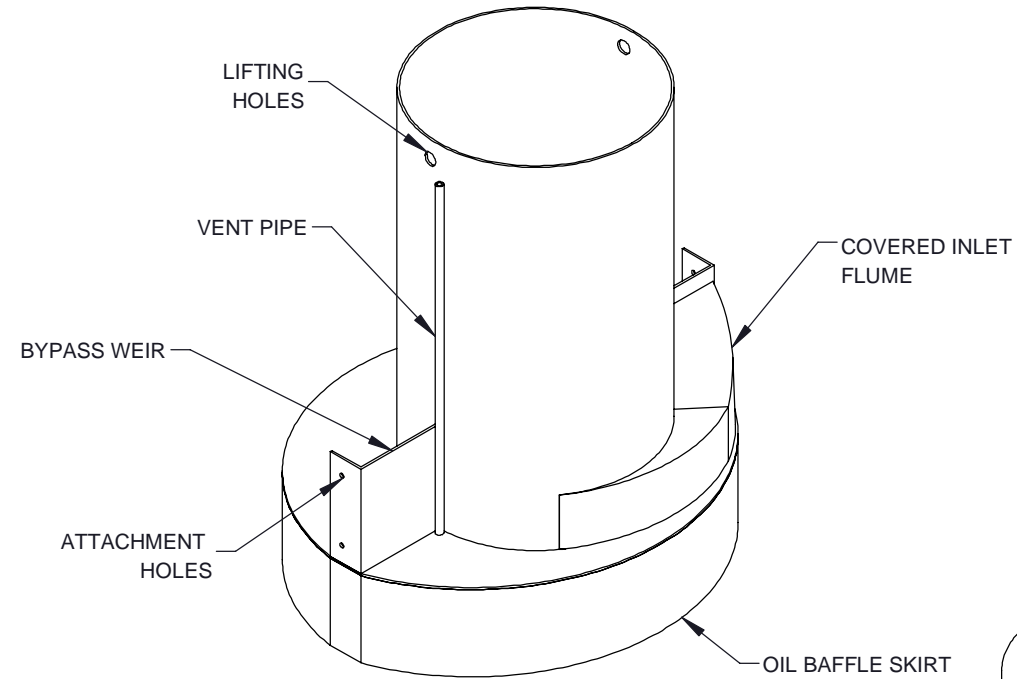
DRAWN: MBB

CHECKED: NDG

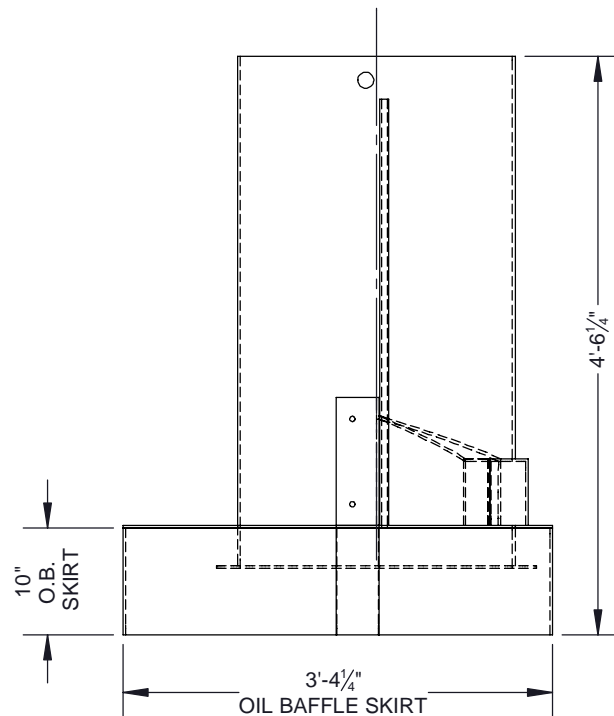
25-4514 - 828940 TOWNEPLACE SUITES



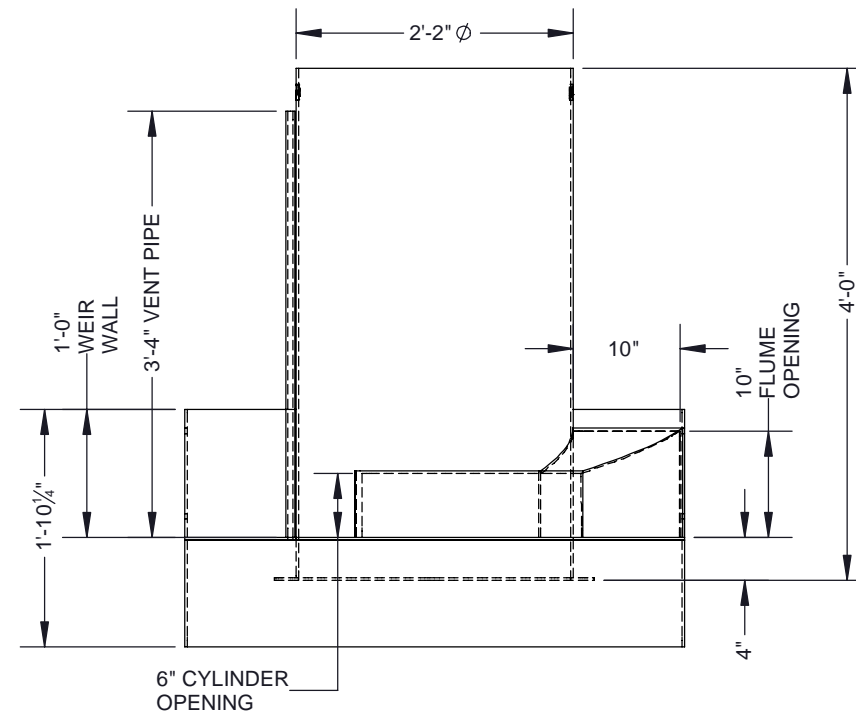
PLAN VIEW



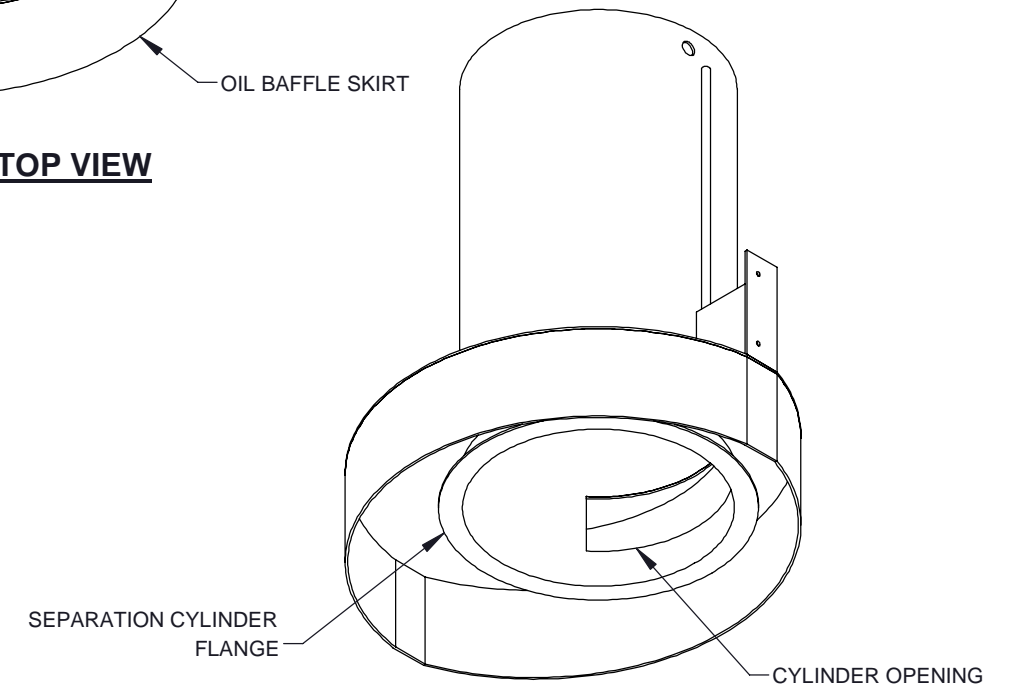
ASSEMBLY TOP VIEW



ELEVATION VIEW



SIDE VIEW



ASSEMBLY BOTTOM VIEW

NOTES:
1. SEE CDS UNIT ASSEMBLY AND INSTALLATION GUIDE FOR ADDITIONAL INFORMATION

The design and information shown on this drawing is provided as a service to the project owner, engineer and contractor by Contech Engineered Solutions LLC, or one of its affiliated companies ("Contech"). Neither this drawing, nor any part thereof, may be used, reproduced or modified in any manner without the prior written consent of Contech. Failure to comply is done at the user's own risk and Contech expressly disclaims any liability or responsibility for such use.

If discrepancies between the supplied information upon which the drawing is based and actual field conditions are encountered as site work progresses, these discrepancies must be reported to Contech immediately for re-evaluation of the design. Contech accepts no liability for designs based on missing, incomplete or inaccurate information supplied by others.

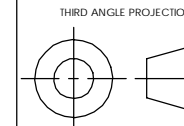


THIS PRODUCT MAY BE PROTECTED BY ONE OR MORE OF THE FOLLOWING U.S. PATENTS: 5,785,848; 6,641,730; 6,511,595; 6,551,785; RELATED FOREIGN PATENTS, OR OTHER PATENTS PENDING.



www.ContechES.com
9025 Centre Pointe Dr., Suite 400, West Chester, OH 45069
800-338-1122 513-645-7000 513-645-7993 FAX

REFERENCE DETAIL
CDS2015-4-C
CONCENTRIC INTERNALS

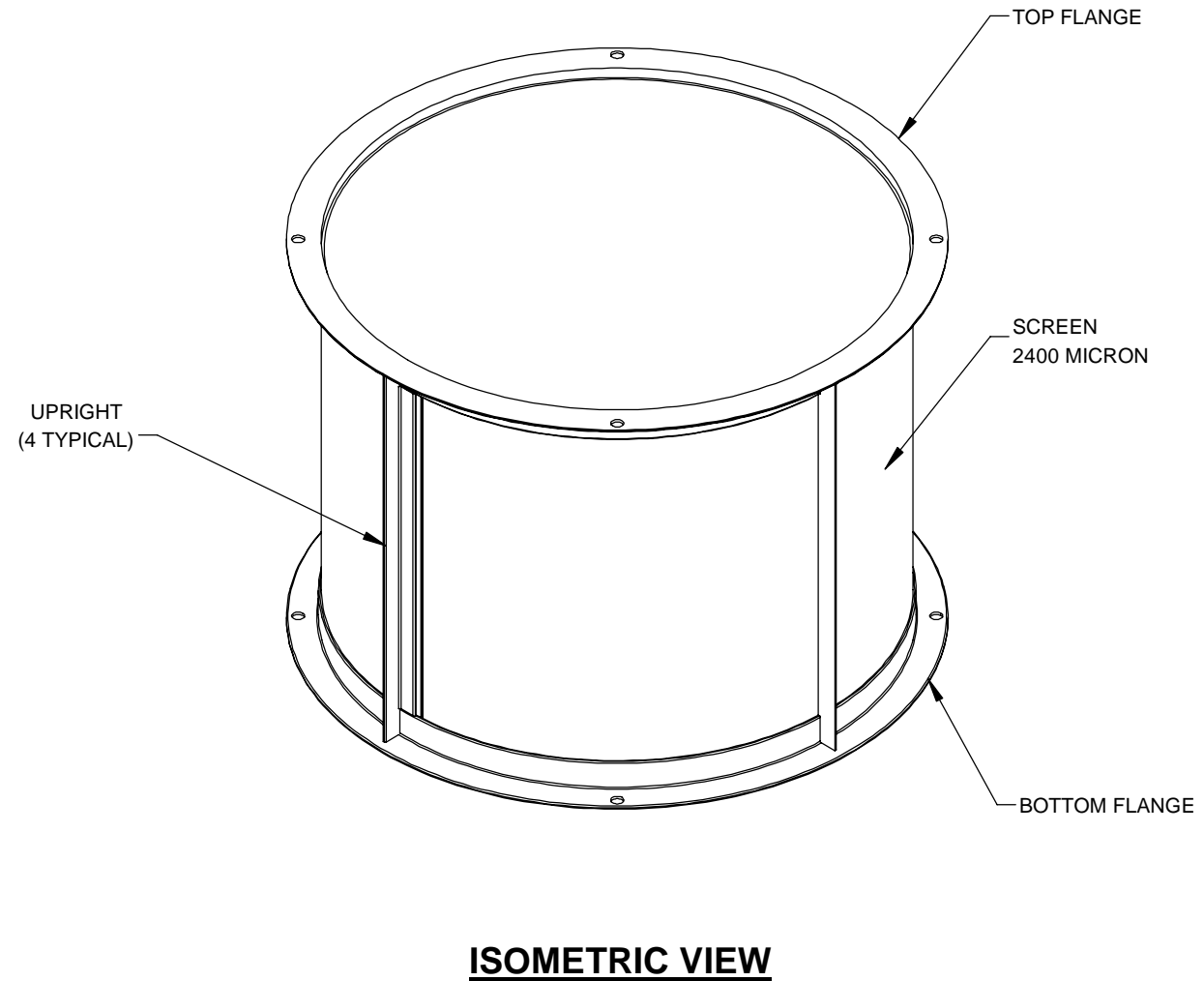
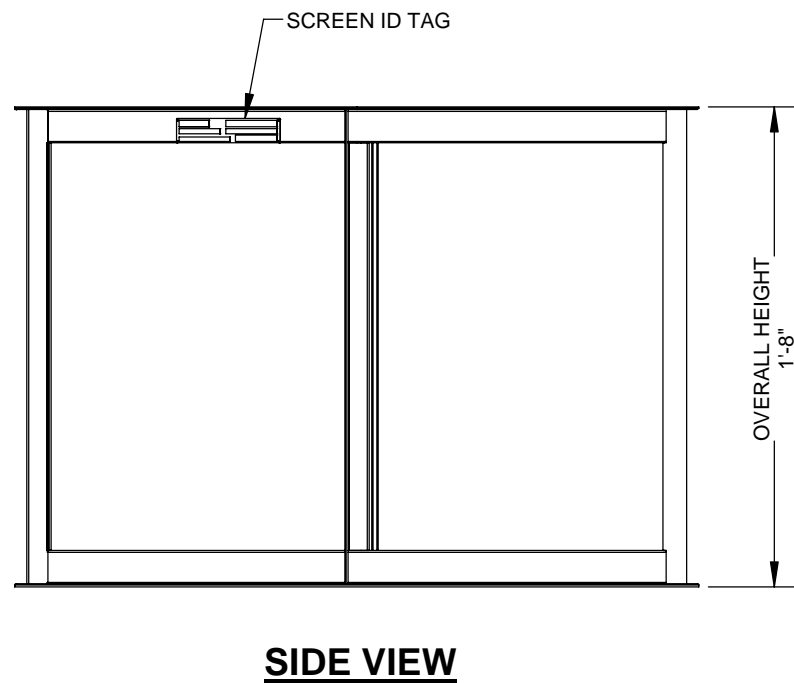
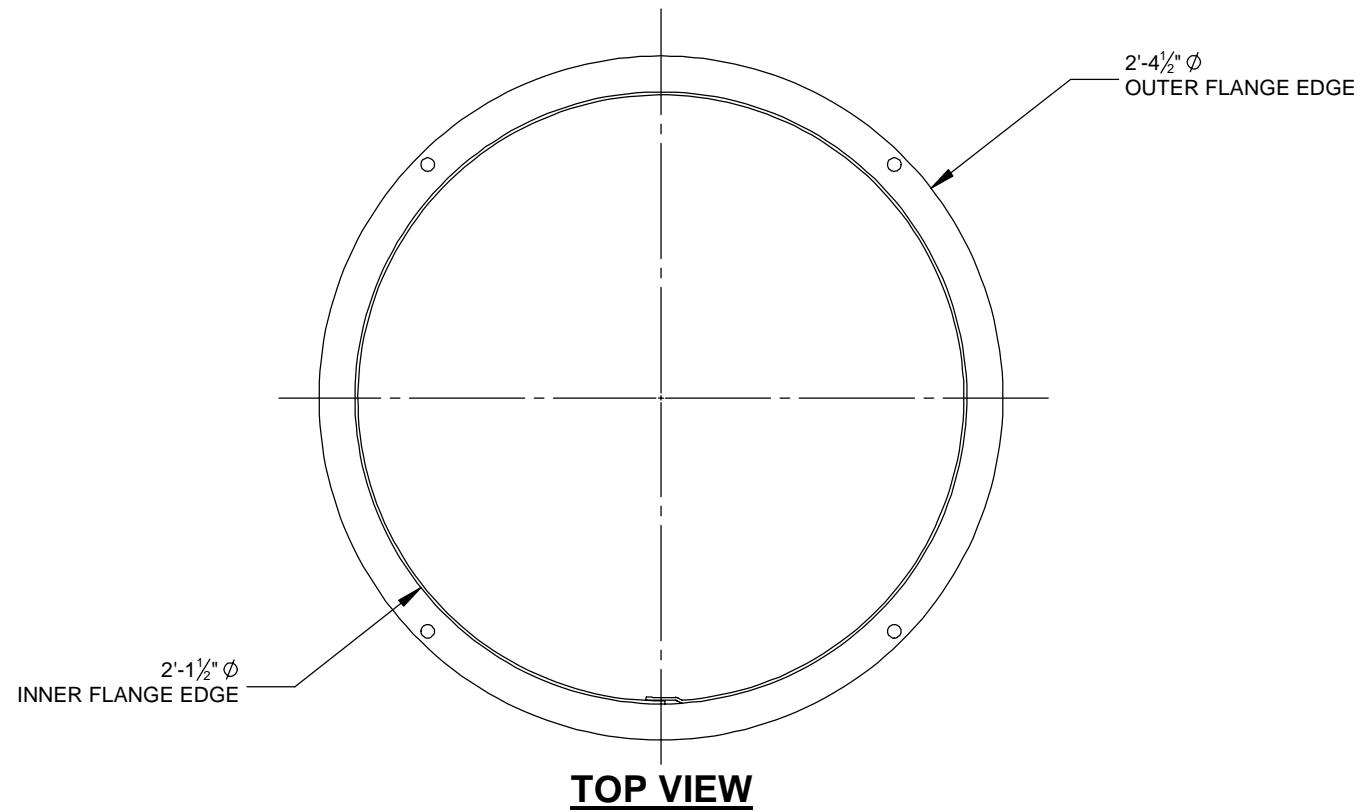


UNLESS OTHERWISE SPECIFIED DIMENSIONS ARE IN INCHES

TOLERANCES:
FRACTIONAL ± 1/16
ANGLES ± 1 DEGREE
TWO PLACE DECIMAL ± 0.06
THREE PLACE DECIMAL ± 0.030

PART NUMBER: 325-000763	
APPROVED BY: M. BROOKS	DRAWN BY: J. BELL
APPROVED BY DATE: 2021.12.10	DRAWN BY DATE: 2021.10.25
SCALE: N/A	REV: B
SHEET 1 OF 1	

25-4514 - 828940 TOWNEPLACE SUITES



NOTES:

1. SEE SITE SPECIFIC DRAWINGS FOR REQUIRED SCREEN ASSEMBLY
2. SEE CDS UNIT ASSEMBLY AND INSTALLATION GUIDE FOR ADDITIONAL INFORMATION

The design and information shown on this drawing is provided as a service to the project owner, engineer and contractor by Contech Engineered Solutions LLC, or one of its affiliated companies ("Contech"). Neither this drawing, nor any part thereof, may be used, reproduced or modified in any manner without the prior written consent of Contech. Failure to comply is done at the user's own risk and Contech expressly disclaims any liability or responsibility for such use.

If discrepancies between the supplied information upon which the drawing is based and actual field conditions are encountered as site work progresses, these discrepancies must be reported to Contech immediately for re-evaluation of the design. Contech accepts no liability for designs based on missing, incomplete or inaccurate information supplied by others.



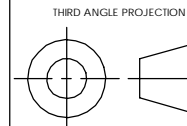
THIS PRODUCT MAY BE PROTECTED BY ONE OR MORE OF THE FOLLOWING U.S. PATENTS: 6,788,842; 6,641,723; 6,611,682; 6,481,792; RELATED FOREIGN PATENTS, OR OTHER PATENTS PENDING.



www.ContechES.com

9025 Centre Pointe Dr., Suite 400, West Chester, OH 45069
800-338-1122 513-645-7000 513-645-7993 FAX

REFERENCE DETAIL
SCREEN ASSEMBLY
CDS2015, 2400 MICRON



UNLESS OTHERWISE SPECIFIED
DIMENSIONS ARE IN INCHES

TOLERANCES:
FRACTIONAL $\pm 1/16$
ANGLES ± 1 DEGREE
TWO PLACE DECIMAL ± 0.06
THREE PLACE DECIMAL ± 0.030

PART NUMBER: 335-000369	
APPROVED BY: M. BROOKS	DRAWN BY: C. CALDON
APPROVED BY DATE: 2024.12.05	DRAWN BY DATE: 2022.02.16
SCALE: N/A	REV: C
SHEET 1 OF 1	