

Job Name: 25-4514 - 828940 Towneplace Suites
 Job Location: Shepherdsville, KY
 Contractor: Contech Engineering Solutions

Plant: Beaver Dam

12/1/2025 8:34:48 AM

Tech: J. Coppage

PC: T. Sekula



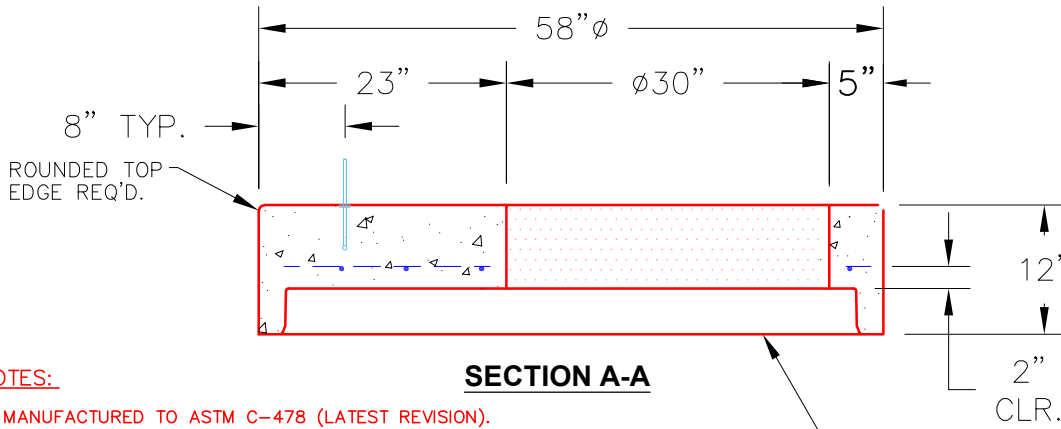
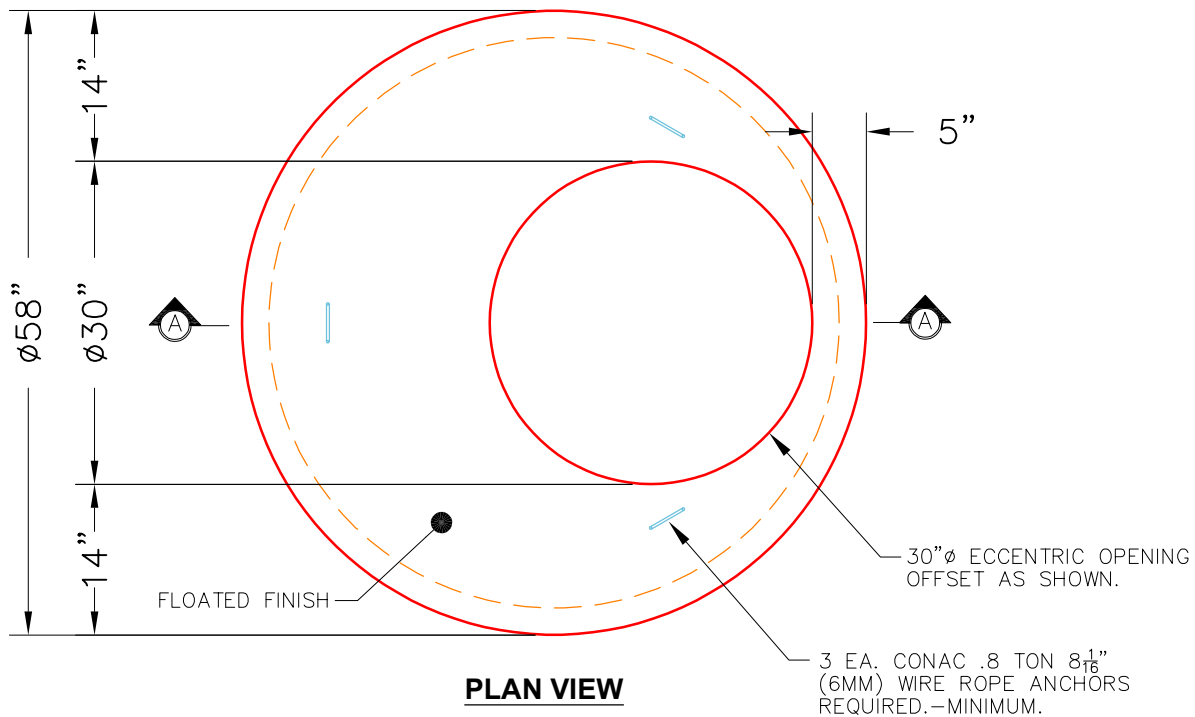
Structure ID: 10-CDS2015-4-C

P4 MH048LD12-30

MH FLAT LID w/30in ECC Hole

- P5) 30" - CASTING HEIGHT - 4"
- P4) 48" - MH FLAT LID w/30in ECC Hole - 12"
- P3) 48" - MH RISER SPECIAL - 12"
- P2) 48" - MH RISER SPECIAL - 66"
- P1) 48" - MH BASE - 24"
- 1) PSASSEMBLY
- 1) CVSTENCILING
- 1) SEPARATION SLAB - *
- 3) 48" - Conseal CS-102 1.00"
- 2) Hole - 12

0 lb Structure Notes:
 1413 lb (4" Tall Casting By Others)
 838 lb
 4515 lb Lifting Hooks To Be Installed
 3007 lb On The Outside Of The Structure
 0 lb
 0 lb
 1474 lb Contech's Logo As Well As
 0 lb The Inlets And Outlet Must Be
 0 lb Stenciled Onto The Structure
 Structure Total: 11247 lb ICAST To Install The Internals



NOTES:

1. MANUFACTURED TO ASTM C-478 (LATEST REVISION).
2. CONCRETE: 5,000 PSI AT 28 DAYS.
3. REINFORCING: #4 BAR @ 10" O.C. E.W. (GRADE 60).

Coating (Int): Coating (Ext):	Seam Up: Flat Seam Dn: Groove	Wall Thickness: 5"	Height (Ext): 12"	Weight (Net): 1413 lb Volume (Net): 0.36cu.yd
----------------------------------	----------------------------------	--------------------	-------------------	--