

Job Name: 25-4504 ADS FedEx Freight
 Job Location: Bowling Green, KY
 Contractor: ADS Advances Drainage Systems, Inc.

Plant: Beaver Dam
 12/1/2025 1:57:56 PM

Tech: J. Coppage
 PC: C. Goff



Structure ID: S8 (2)

P1 MH096BAVF

MH MONOBASE 13F, Custom Ht

- P5) 24" x 24" - CASTING HEIGHT - 4"
- P4) 96" - MH FLAT TOP w/24"x24" Hole - 12"
- P3) 96" - MH RISER - 54"
- P2) 96" - MH RISER - 84"
- P1) 96" - MH MONOBASE 13F, Custom Ht - 30"
- 1) ASSEMBLY REQUIRED
- 3) 96" - Conseal CS-102 1.00"
- 1) 24" x 24" - Conseal CS-102 1.00"
- 2) Hole - 32
- 1) Hole - 22

- Structure Notes:**
1. JR HOE HOE-280T PROVIDED BY ICAST.
 2. PER ASTM C478 SPECIFICATIONS.
 3. CONCRETE = 5,000 PSI AT 28 DAYS.
 4. REINFORCING PER ASTM A615 (GRADE 60).
 - TOP SLAB (As .31) #5 BARS AT 6" C.C.E.W.
 - RISER/WALLS (As .18)
 - FLOOR TOP AND BOTTOM MAT
 AS NOTED BELOW.

0 lb
 9698 lb
 11928 lb
 20926 lb
 18608 lb
 0 lb
 0 lb
 0 lb
 0 lb
 0 lb

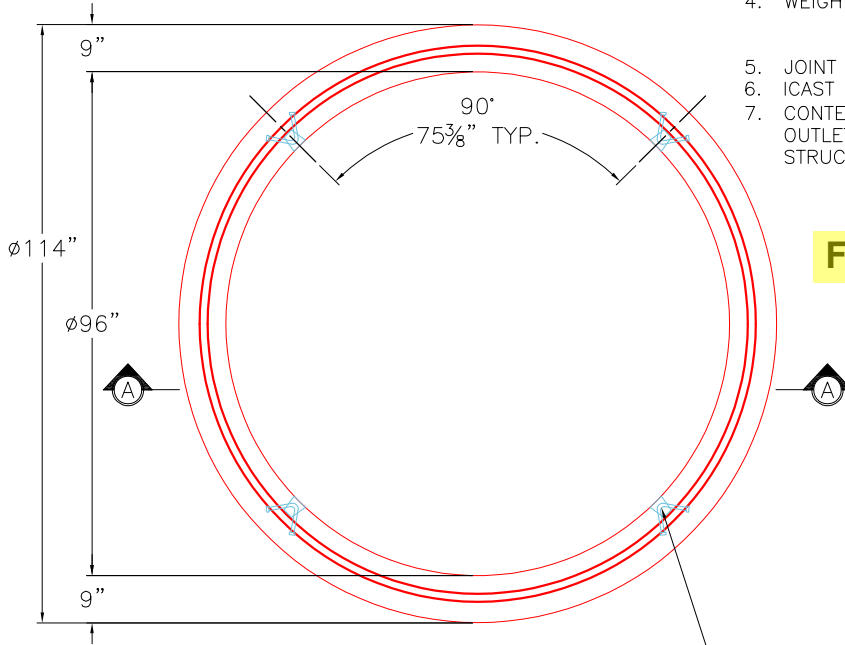
Structure Total: 61160 lb

Rim: 526.89' Rim to Invert: 4.33' Slack: 1.96" Sump: 134" Step Position:

GENERAL NOTES:

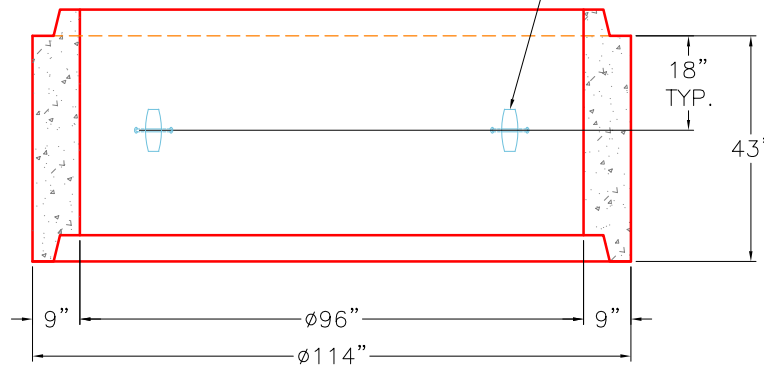
1. MANUFACTURED TO ASTM C-478 (LATEST REVISION).
2. CONCRETE 5,000 PSI AT 28 DAYS.
3. REINFORCING: WALLS - WWF AREA 0.24
 FLOOR - AREA 0.27 - #5 BAR @ 12" C/C TOP AND BOTTOM MAT.
4. WEIGHT: TOTAL - 18,608 LBS.
 FIRST POUR - 10,711 LBS
 SECOND POUR - 7,897 LBS
5. JOINT SEAL: CONCRETE SEALANTS INC. CS-102.
6. ICAST TO INSTALL INTERNAL BRACKETS.
7. CONTECH'S LOGO AS WELL AS THE INLETS AND OUTLETS MUST BE STENCILED ONTO THE STRUCTURE.

FIRST POUR DRAWING



TOP VIEW

4 EA. CONAC 6CA14 ANCHORS REQUIRED FOR HANDLING.



SECTION A-A

Coating (Int):
 Coating (Ext):

Seam Up: Tongue
 Seam Dn: n/a

Wall Thickness: 9"
 Floor Height: 13"

Height (Int): 30"
 Height (Ext): 43"

Weight (Net): 18608 lb
 Volume (Net): 4.75cu.yd

Job Name: 25-4504 ADS FedEx Freight
 Job Location: Bowling Green, KY
 Contractor: ADS Advances Drainage Systems, Inc.

Plant: Beaver Dam
 12/1/2025 1:57:56 PM

Tech: J. Coppage
 PC: C. Goff



Structure ID: S8 (2)

P1 MH096BAVF

MH MONOBASE 13F, Custom Ht

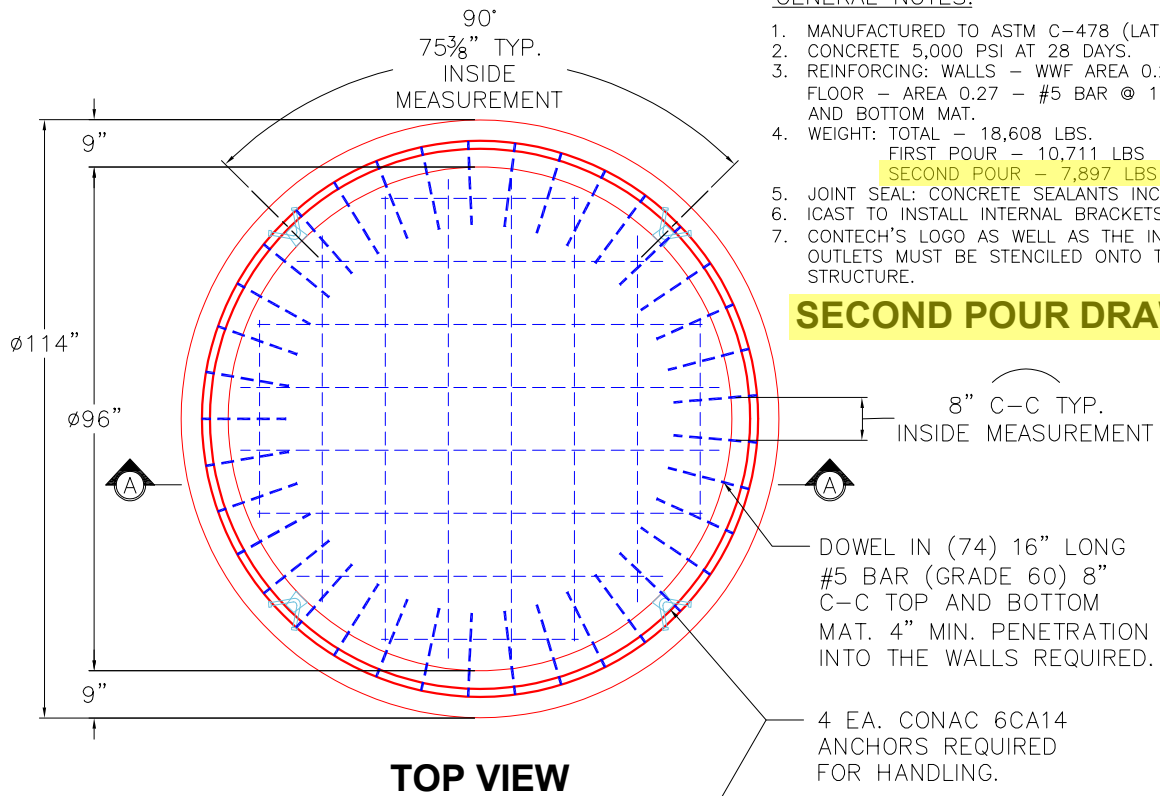
- P5) 24" x 24" - CASTING HEIGHT - 4"
- P4) 96" - MH FLAT TOP w/24"x24" Hole - 12"
- P3) 96" - MH RISER - 54"
- P2) 96" - MH RISER - 84"
- P1) 96" - MH MONOBASE 13F, Custom Ht - 30"
- 1) ASSEMBLY REQUIRED
- 3) 96" - Conseal CS-102 1.00"
- 1) 24" x 24" - Conseal CS-102 1.00"
- 2) Hole - 32
- 1) Hole - 22

- Structure Notes:**
1. JR HOE HOE-280T PROVIDED BY ICAST.
 2. PER ASTM C478 SPECIFICATIONS.
 3. CONCRETE = 5,000 PSI AT 28 DAYS.
 4. REINFORCING PER ASTM A615 (GRADE 60).
 - TOP SLAB (As .31) #5 BARS AT 6" C.C.E.W.
 - RISER/WALLS (As .18)
 - FLOOR TOP AND BOTTOM MAT

Structure Total: 61160 lb

Structure Total: 61160 lb

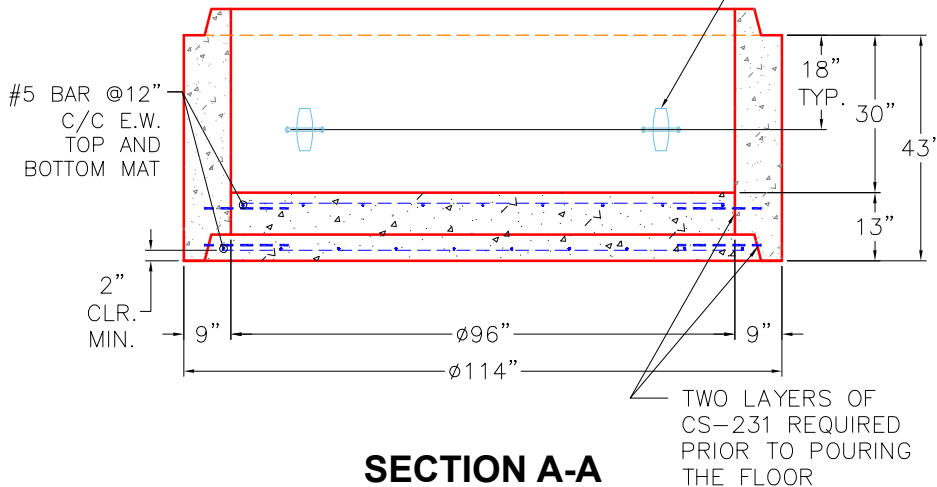
Rim: 526.89' Rim to Invert: 4.33' Slack: 1.96" Sump: 134" Step Position:



GENERAL NOTES:

1. MANUFACTURED TO ASTM C-478 (LATEST REVISION).
2. CONCRETE 5,000 PSI AT 28 DAYS.
3. REINFORCING: WALLS - WWF AREA 0.24
FLOOR - AREA 0.27 - #5 BAR @ 12" C/C TOP AND BOTTOM MAT.
4. WEIGHT: TOTAL - 18,608 LBS.
FIRST POUR - 10,711 LBS
SECOND POUR - 7,897 LBS
5. JOINT SEAL: CONCRETE SEALANTS INC. CS-102.
6. ICAST TO INSTALL INTERNAL BRACKETS.
7. CONTECH'S LOGO AS WELL AS THE INLETS AND OUTLETS MUST BE STENCILED ONTO THE STRUCTURE.

SECOND POUR DRAWING



SECTION A-A

Coating (Int): Coating (Ext):	Seam Up: Tongue Seam Dn: n/a	Wall Thickness: 9" Floor Height: 13"	Height (Int): 30" Height (Ext): 43"	Weight (Net): 18608 lb Volume (Net): 4.75cu.yd
----------------------------------	---------------------------------	---	--	---