

Job Name: 25-4503 TM Retail
 Job Location: Somerset, KY
 Contractor: Weddle Enterprises, Inc

Plant: 100

12/16/2025 2:13:15 PM

Tech: J. Horsley

PC: C. Goff



Structure ID: OCS (12)

P2 MH048LD07ECC

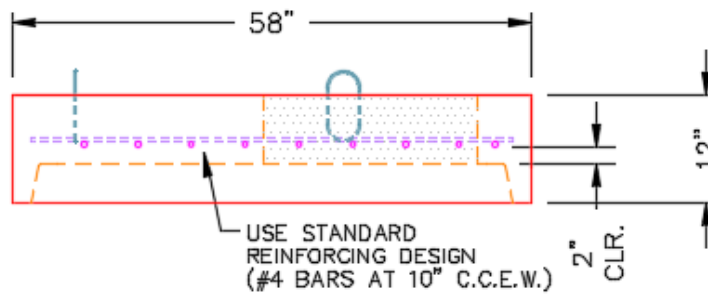
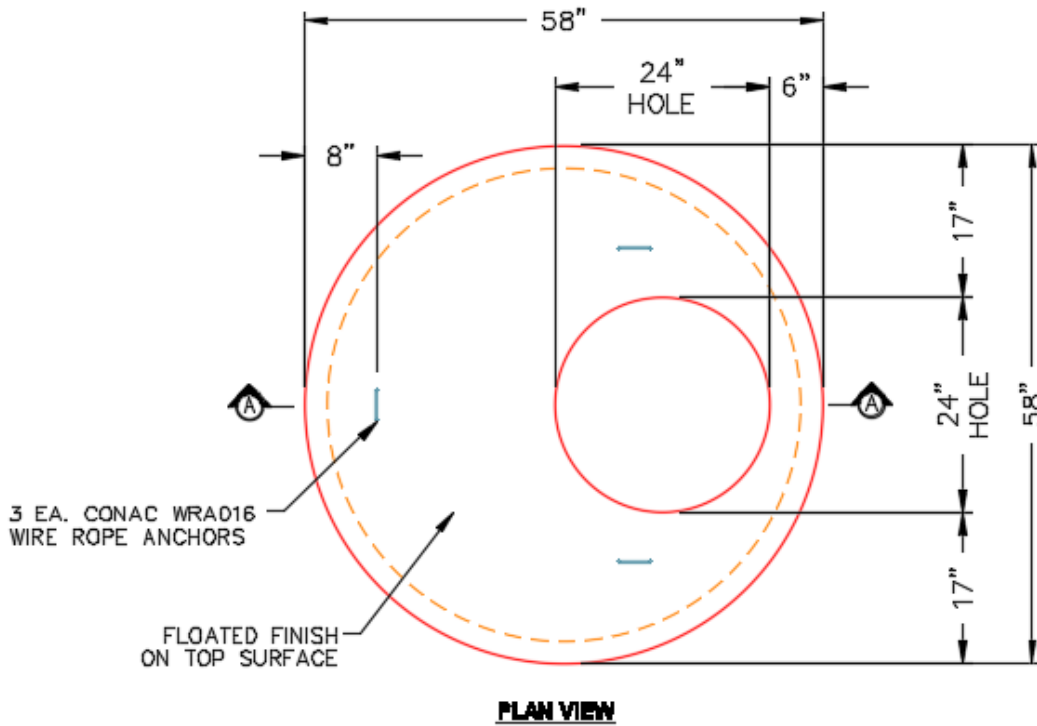
MH FLAT LID w/24in ECC Hole F/F

- P3) 24" - CASTING HEIGHT - 7"
- P2) 48" - MH FLAT LID w/24in ECC Hole F/F - 7"
- P1) 48" - MH BASE Custom Ht F/n - 35"
- 1) 48" - DBL 1"x14.5' Butyl (2x)
- 1) Hole - 30
- 1) Hole - 8
- 3) MH Step ML-10-TDS-NCR - 10"

	0 lb
	1286 lb
	3438 lb
	0 lb
	0 lb
	0 lb
	0 lb
Structure Total:	4724 lb

Structure Notes:
 1. PER ASTM C478 SPECIFICATIONS.
 2. CONCRETE = 4,000 PSI AT 28 DAYS.
 3. CASTING BY OTHERS (HOE MCB-350B F/G).

REINFORCING PER ASTM A615 (GRADE 60).
 - RISER/WALLS (As .12)
 - FLOOR (As .31) #5 BARS AT 12" C.C.E.W.



Coating (Int): Coating (Ext):	Seam Up: Flat Seam Dn: Flat	Wall Thickness: 5"	Height (Ext): 7"	Weight (Net): 1286 lb Volume (Net): 0.33cu.yd
----------------------------------	--------------------------------	--------------------	------------------	--