

Job Name: 25-4488 - WV DOT Wood Co NHPP-0068(192)  
 Job Location: Parkersburg, WV  
 Contractor: Triton Construction

Plant: 100  
 3/26/2026 1:44:56 PM

Tech: Jared - F  
 PC: E. Bradley

**Structure ID: MH-07**

**P3 MH060LD13**

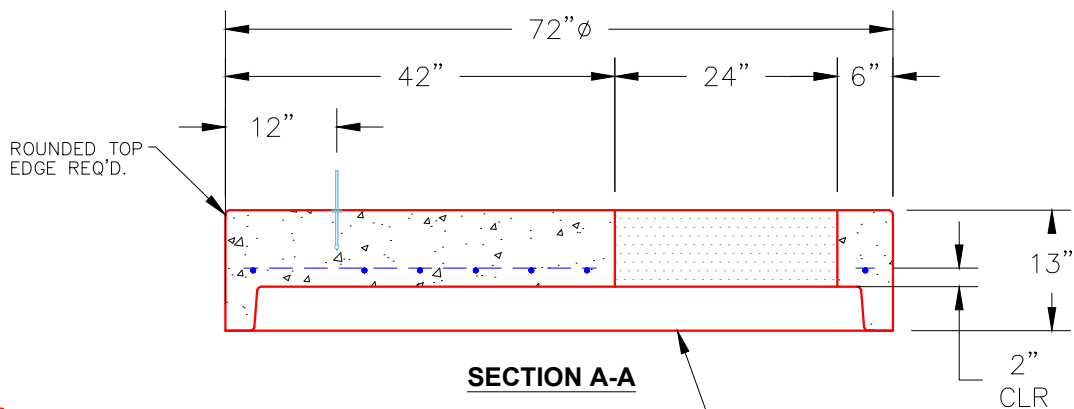
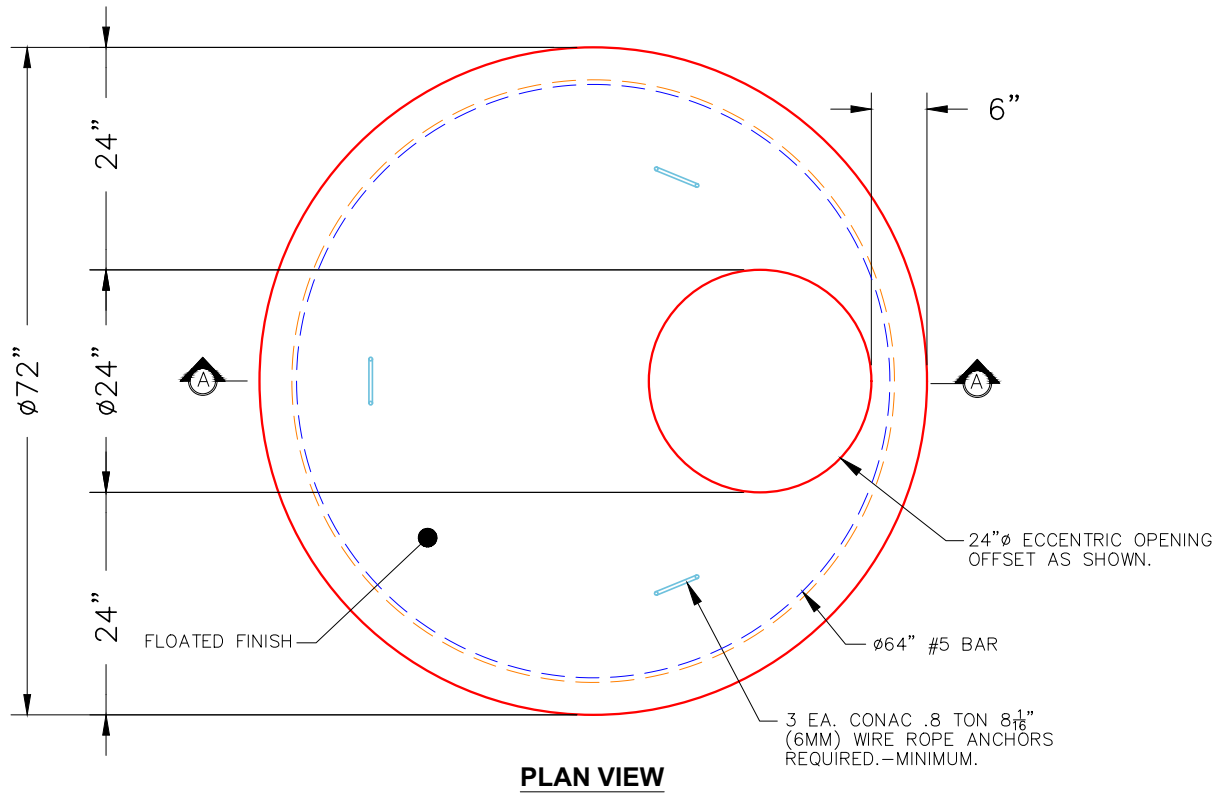
**MH FLAT TOP w/ 24" ECC Hole F/G**

- P4) 24" - CASTING HEIGHT - 8.85"
- P3) 60" - MH FLAT TOP w/ 24" ECC Hole F/G - 13"
- P2) 60" - MH RISER T/G - 24"
- P1) 60" - MH BASE Custom Ht T/n - 59"
- 1) CASTING - NEENAH R-1785 (F/C)
- 2) 60" - Conseal CS-102 1.00"
- 1) Hole - 40
- 1) Hole - 38
- 7) MH Step ML-10-TDS-NCR - 10"

0 lb  
 2869 lb  
 2505 lb  
 7601 lb  
 294 lb  
 0 lb  
 0 lb  
 0 lb  
 0 lb  
 0 lb  
 Structure Total: 13269 lb

**Structure Notes:**  
**\*\*WV DOT STATE PROJECT\*\***  
 1. PER ASTM C478 SPECIFICATIONS.  
 2. CONCRETE = 4,000 PSI AT 28 DAYS.  
 3. INVERT CHANNEL (BY OTHERS).  
 4. CASTING BY I-CAST (NEENAH R-1785 (F/C)).

REINFORCING PER ASTM A615 (GRADE 60).  
 - TOP SLAB (As .62) #5 BARS AT 6" C.C.E.W..  
 - RISER/WALLS (As .18)  
 - FLOOR (As .37) #5 BARS AT 10" C.C.E.W.



- NOTES:**
1. MANUFACTURED TO ASTM C-478 (LATEST REVISION).
  2. CONCRETE: 4,000 PSI AT 28 DAYS.
  3. REINFORCING: #5 BAR @ 6" O.C. E.W. (GRADE 60).

Coating (Int): Coating (Ext):	Seam Up: Flat Seam Dn: Groove	Wall Thickness: 6"	Height (Ext): 13"	Weight (Net): 2869 lb Volume (Net): 0.73cu.yd
----------------------------------	----------------------------------	--------------------	-------------------	--