

Job Name: 25-4488 - WVDOT Wood Co NHPP-0068(192)
 Job Location: Parkersburg, WV
 Contractor: Triton Construction

Plant: 100
 3/26/2026 1:44:55 PM

Tech: Jared - F
 PC: E. Bradley

Structure ID: MH-04

P3 MH060LD08

MH FLAT TOP w/ 24" ECC Hole F/F

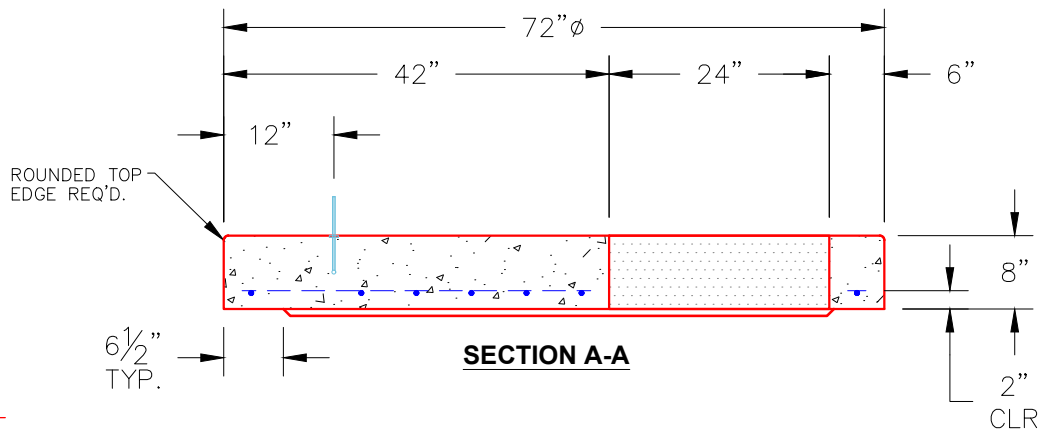
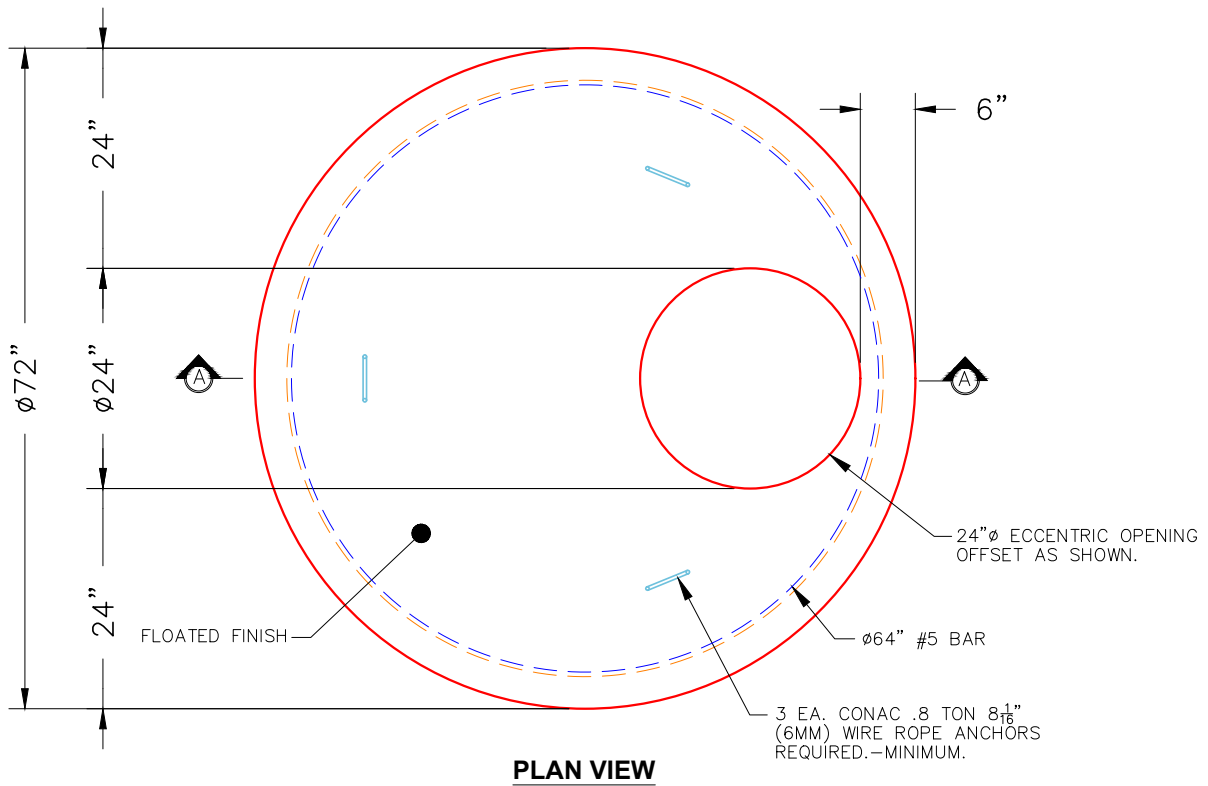
- P5) 24" - CASTING HEIGHT - 8.85"
- P4) 24" - GRADE RING F/F - 3"
- P3) 60" - MH FLAT TOP w/ 24" ECC Hole F/F - 8"
- P2) 60" - MH RISER F/G - 12"
- P1) 60" - MH BASE T/h - 72"
- 1) CASTING - NEENAH R-1785 (F/C)
- 2) 60" - Conseal CS-102 1.00"
- 2) Hole - 40
- 1) Hole - 24
- 7) MH Step ML-10-TDS-NCR - 10"

0 lb
 202 lb
 2429 lb
 1253 lb
 8653 lb
 294 lb
 0 lb
 0 lb
 0 lb
 0 lb
 0 lb

 Structure Total: 12832 lb

Structure Notes:
****WVDOT STATE PROJECT****
 1. PER ASTM C478 SPECIFICATIONS.
 2. CONCRETE = 4,000 PSI AT 28 DAYS.
 3. INVERT CHANNEL (BY OTHERS).
 4. CASTING BY I-CAST (NEENAH R-1785 (F/C)).

REINFORCING PER ASTM A615 (GRADE 60).
 - TOP SLAB (As .62) #5 BARS AT 6" C.C.E.W..
 - RISER/WALLS (As .18)
 - FLOOR (As .37) #5 BARS AT 10" C.C.E.W.



- NOTES:**
- 1. MANUFACTURED TO ASTM C-478 (LATEST REVISION).
 - 2. CONCRETE: 4,000 PSI AT 28 DAYS.
 - 3. REINFORCING: #5 BAR @ 6" O.C. E.W. (GRADE 60).

Coating (Int): Coating (Ext):	Seam Up: Flat Seam Dn: Flat	Wall Thickness: 6"	Height (Ext): 8"	Weight (Net): 2429 lb Volume (Net): 0.62cu.yd
----------------------------------	--------------------------------	--------------------	------------------	--