

Job Name: 25-4477 - ADS Kerrick ES
 Job Location: Louisville, KY
 Contractor: ADS Advances Drainage Systems, Inc.

Plant: Beaver Dam
 12/3/2025 8:08:59 AM

Tech: J. Coppage
 PC: C. Goff



Structure ID: 54477 (2)B

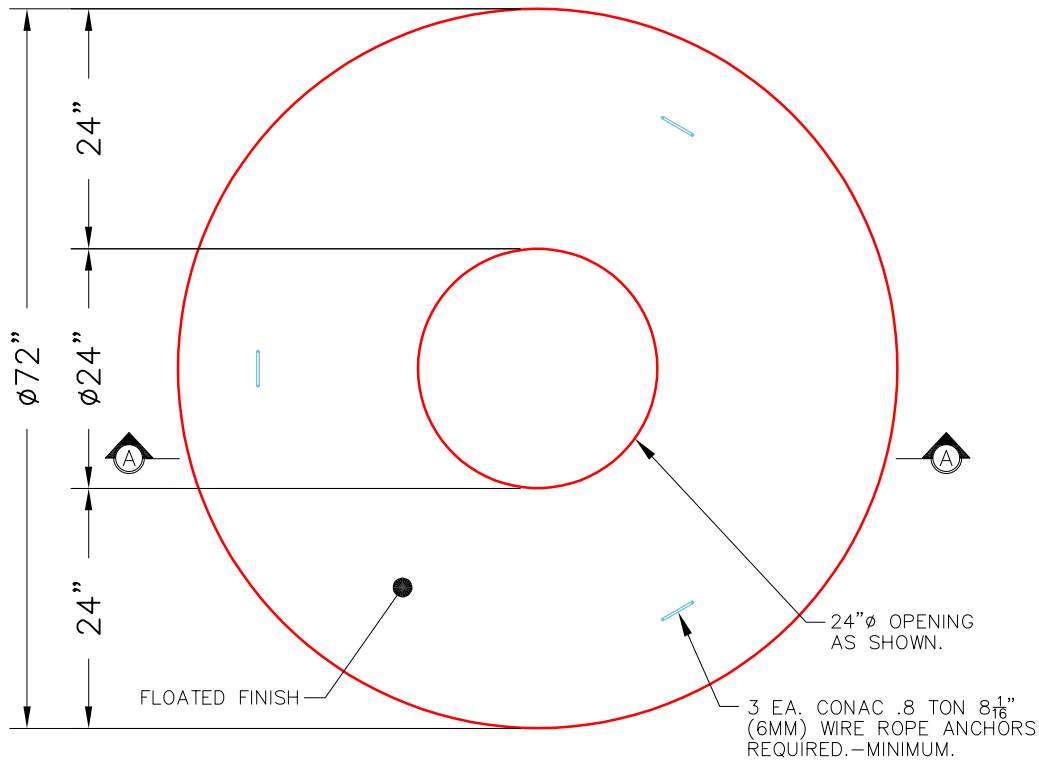
P1 MH060LD08CC

MH FLAT TOP w/24" Ctr. Hole

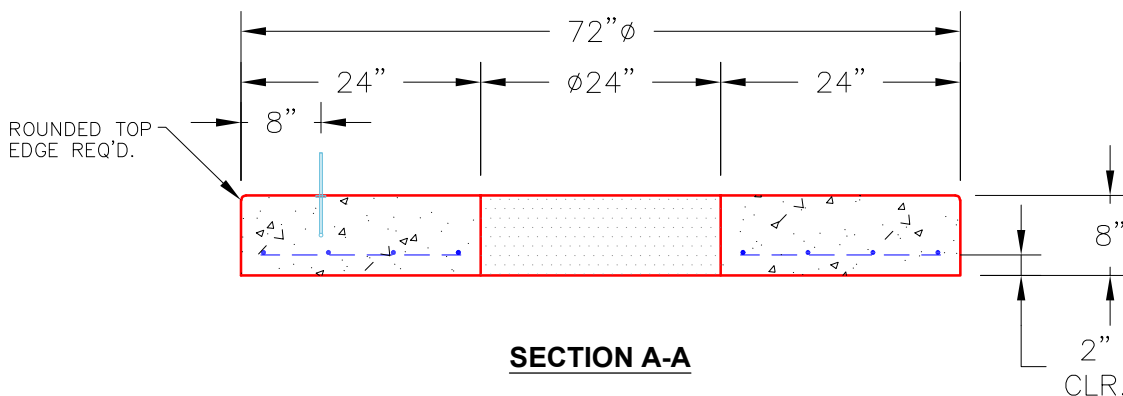
P2) 24" - CASTING HEIGHT - 7"
 P1) 60" - MH FLAT TOP w/24" Ctr. Hole - 8"

Structure Total: 2429 lb

- Structure Notes:**
1. JR HOE MC-375 PROVIDED BY ICAST.
 2. PER ASTM C478 SPECIFICATIONS.
 3. CONCRETE = 4,500 PSI AT 28 DAYS.
 4. REINFORCING PER ASTM A615 (GRADE 60).
 (H-20 TRAFFIC RATED DESIGN)
 TOP SLAB (As .62) #5 BARS AT 6" C.C.E.W..



PLAN VIEW



SECTION A-A

Coating (Int): Coating (Ext):	Seam Up: Flat Seam Dn: Flat	Wall Thickness: 6"	Height (Ext): 8"	Weight (Net): 2429 lb Volume (Net): 0.62cu.yd
----------------------------------	--------------------------------	--------------------	------------------	--