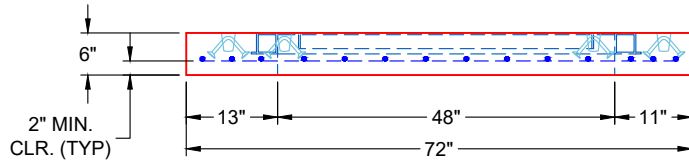
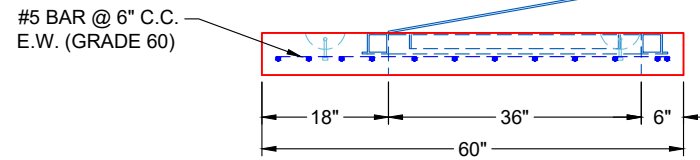


**PLAN VIEW
(RIGHT SIDE UP)**



**FRONT VIEW
(RIGHT SIDE UP)**



**SIDE VIEW
(RIGHT SIDE UP)**

GENERAL NOTES:

1. MANUFACTURED PER ASTM C-913 (LATEST REVISION)
2. CONCRETE: 5,000 PSI AT 28 DAYS
3. REINFORCEMENT: #5 BAR @ 6" C.C. E.W. (GRADE 60) - 2" MIN. REBAR CLEARANCE (TYP)
4. WEIGHT: 1,305 LBS
5. HALLIDAY S1R 36" X 48" HATCH SUPPLIED BY ICAST - TO BE CAST INTO FLAT LID
6. TOP SURFACE TO RECEIVE LIGHT BRUSH FINISH
7. LIFTERS: 4 EA. 4CA14 CONAC A-ANCHORS FOR PLANT & FIELD HANDLING

PRODUCTION WORK ORDER

PRODUCT I.D.: BX4860-06LD06-S

DESCRIPTION: 60" X 72" X 6" FLAT LID SPECIAL



QUALITY CONTROL CHECKLIST

- ALL DIMENSIONS CORRECT.
- LIFTERS INSTALLED.
- HOLE LOCATION(S) CORRECT.
- REINFORCING CORRECT.
- HATCH LOCATION & ORIENTATION.
- EDGES CHAMFERED.
- SHIPLAP JOINT INSTALLED.

PRODUCT VIEW: RIGHT SIDE UP

CUSTOMER: WARREN COUNTY WATER DISTRICT

PLANT: BEAVER DAM, KY

PROJECT: WCWD FACILITY METER VAULTS

WEIGHT: 1,305 LBS

STRUCTURE: 54470 (4)

TOP SECTION JOINT: FLAT

ORDER NO: 25-4470

BASE SECTION JOINT: N / A

PE: J.H. ROSS

DRAWING: K. CARDWELL

QC CHECK INITIALS:

DATE: 12/08/25

SCALE: NTS

PG. 1 OF 1

Job Number:

25-4470

Job Name:

WCWD Facility Meter Vaults

Structure:

54470 (4)

Note:

Halliday S1R 36" x 48" Hatch

Supplied by iCast To Be Cast Into

Flat Lid