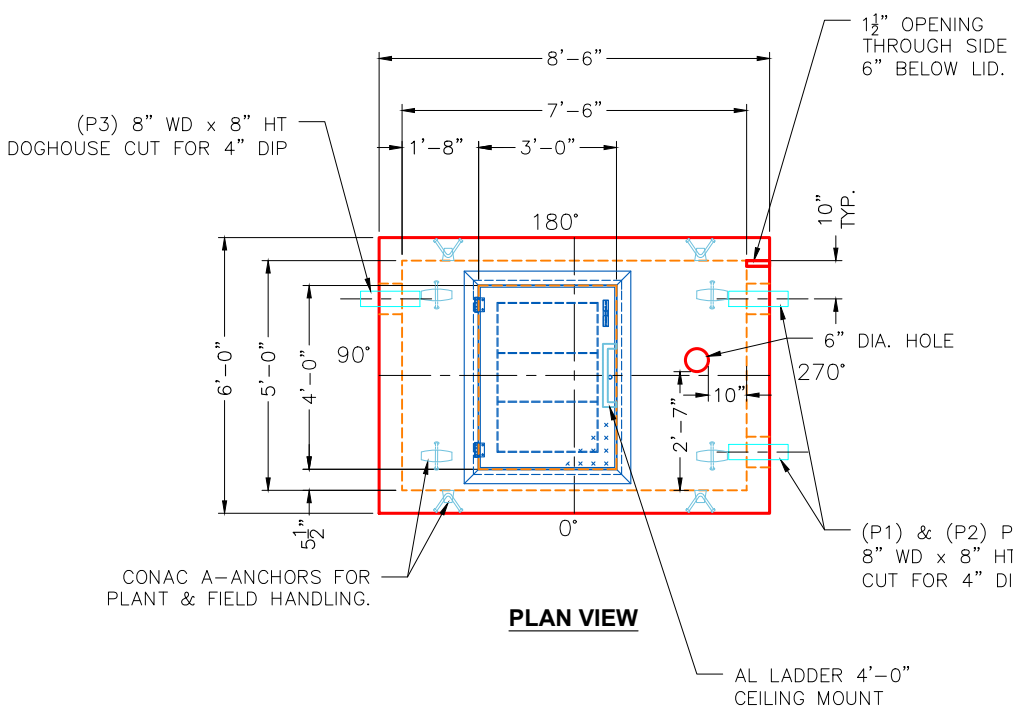
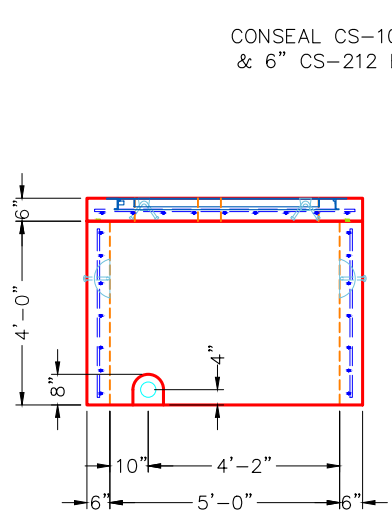


GENERAL NOTES:

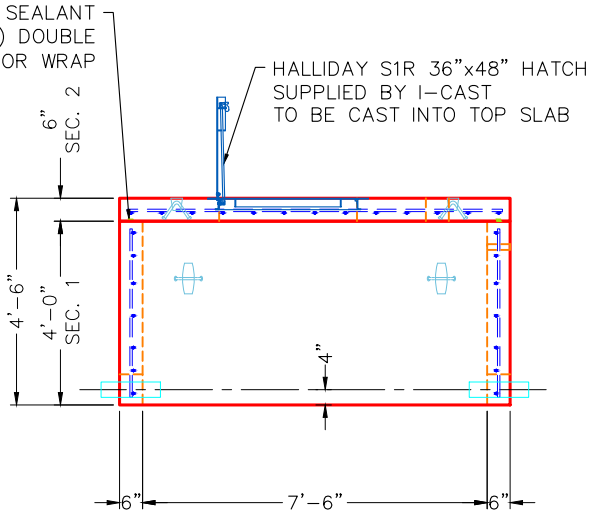
1. MANUFACTURED PER ASTM C913 SPECIFICATIONS.
2. CONCRETE = 5,000 PSI AT 28 DAYS.
3. REINFORCING PER ASTM A615 (GRADE 60)
TOP SLAB (As .62) #5 BARS AT 8" C.C.E.W.
WALLS (As .47) #5 BARS AT 8" C.C.E.W.
4. JOINT SEALANT (SUPPLIED BY I-CAST):
CONSEAL CS-102 (1") DOUBLE.
5. EXTERIOR WRAP: 6" CS-212.
6. ANY REQUIRED COATINGS OR LINERS TO BE
SUPPLIED BY OTHERS.
7. OPEN BOTTOM - P.I.P. BASE SLAB BY OTHERS.
8. ANY REQUIRED ADMIXTURES TO BE SUPPLIED BY
OTHERS.
9. WEIGHTS:
SEC. 2 TOP SLAB.....2,813 LBS
SEC. 1 RISER.....7,742 LBS
10. HALLIDAY S1R 36"x48" HATCH SUPPLIED BY
I-CAST TO BE CAST INTO TOP SLAB.
11. LADDER - AL LADDER 4'-0" CEILING MOUNT.



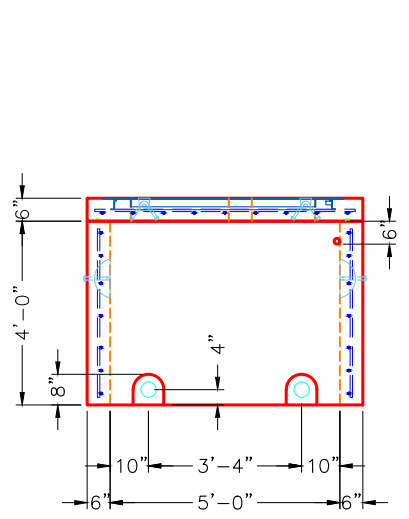
PLAN VIEW



**END VIEW
90°**



**FRONT VIEW
0°**



**END VIEW
270°**

REVISIONS	
REV. <u>A</u> DATE: 00-00-00	NO REVISIONS TO DATE



SUBMITTAL DRAWING: 60"x90" WAREHOUSE VAULT	
CUSTOMER: WARREN COUNTY WATER DISTRICT	
PROJECT: WCWD FACILITY METER VAULTS	
STRUCTURE: 54470 (3)	
SALES ORDER NO: 25-4470	
PC: E. BRADLEY	DRAWN BY: FMT
DATE: 12/08/2025	NTS PG. 1 of 1