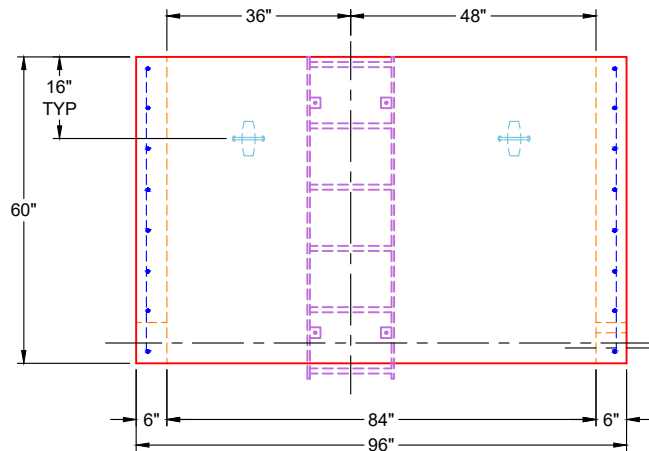


**PLAN VIEW
(RIGHT SIDE UP)**



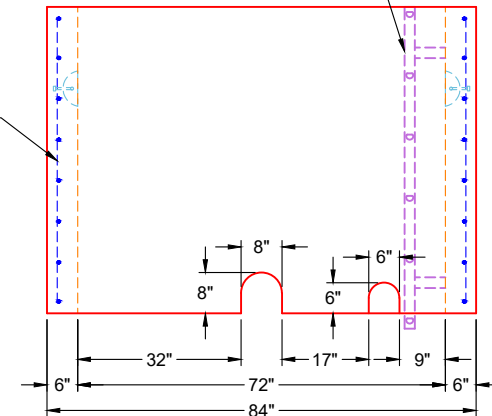
**VIEW A
(RIGHT SIDE UP)**

GENERAL NOTES:

1. MANUFACTURED PER ASTM C-913 (LATEST REVISION)
2. CONCRETE: 5,000 PSI AT 28 DAYS
3. REINFORCEMENT: #5 BAR @ 8" C.C. E.W. (GRADE 60) - 2" MIN. REBAR CLEARANCE (TYP)
4. WEIGHT: 10,077 LBS
5. HALLIDAY 5' ALUMINUM WALL MOUNT LADDER SUPPLIED BY ICAST

HALLIDAY 5' ALUMINUM WALL MOUNT LADDER SUPPLIED BY ICAST

#5 BAR @ 8" C.C. E.W. (GRADE 60)



**VIEW B
(RIGHT SIDE UP)**

PRODUCTION WORK ORDER

PRODUCT I.D.: CVR

DESCRIPTION: 72" X 84" X 60" DOGHOUSE RISER



QUALITY CONTROL CHECKLIST

- ALL DIMENSIONS CORRECT.
- LIFTERS INSTALLED.
- HOLE LOCATION(S) CORRECT.
- REINFORCING CORRECT.
- SURFACE QUALITY ACCEPTABLE.
- EDGES CHAMFERED.
- ALL PATCHWORK ACCEPTABLE.

PRODUCT VIEW: RIGHT SIDE UP

CUSTOMER: WARREN COUNTY WATER DISTRICT

PLANT: BEAVER DAM, KY

PROJECT: WCWD FACILITY METER VAULTS

WEIGHT: 10,077 LBS

STRUCTURE: 54470 (2)

TOP SECTION JOINT: FLAT

ORDER NO: 25-4470

BASE SECTION JOINT: FLAT

PE: J.H. ROSS

DRAWING: K. CARDWELL

QC CHECK INITIALS:

DATE: 12/04/25

SCALE: NTS

PG. 1 OF 1