

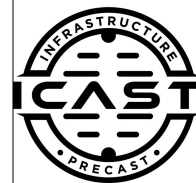
Job Name: 25-4454 - Fred White Blvd Boat And RV
 Job Location: Portland, TN
 Contractor: Core & Main LP (BG)

Plant: Beaver Dam, KY

Tech: J. Horsley - A

2/12/2026 9:48:13 AM

PC: T. Lewis



Structure ID: 54454 (3)

P2 BX036036-06LD08W-S

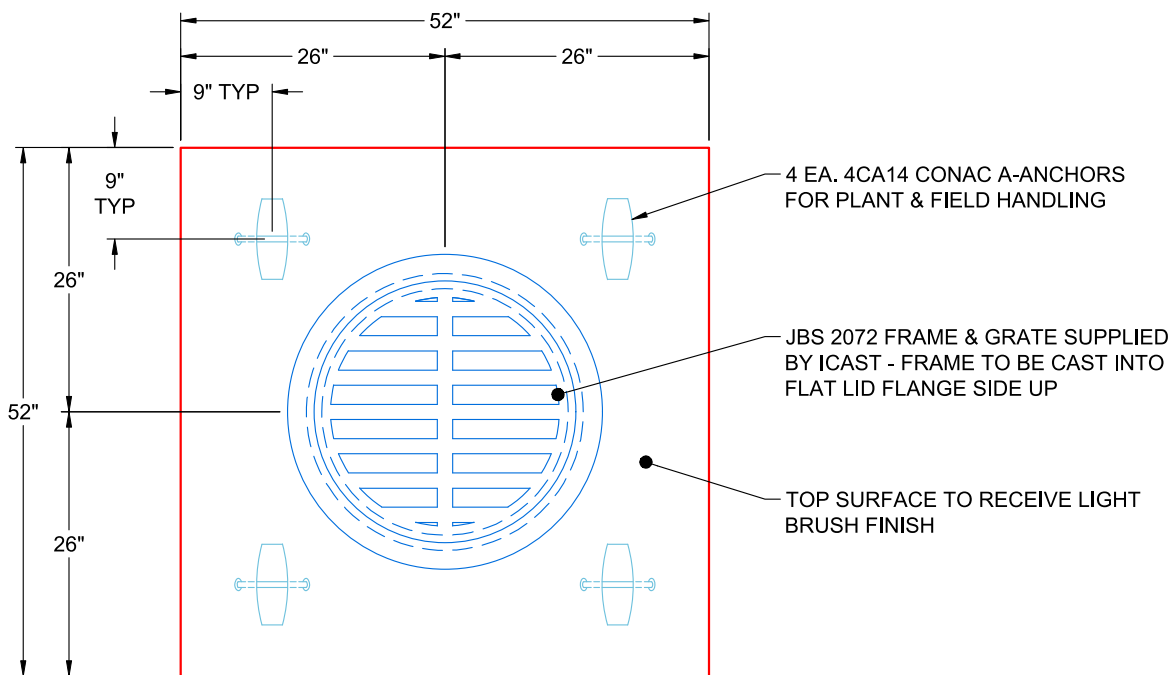
CB FLAT TOP 8"W w/24" F/G F/F

- P3) 24" - CASTING HEIGHT - 0"
- P2) 36" x 36" - CB FLAT TOP 8"W w/24" F/G F/F - 6"
- P1) 36" x 36" - BOX BASE 8inW, 8inF F/n - 42"
- 1) CASTING - JBS 2072 F/G
- 1) 36" x 36" - Conseal CS-102 1.00"
- 1) Hole - 20
- 1) Hole - 8
- 1) Weir n/n - 12"x30"

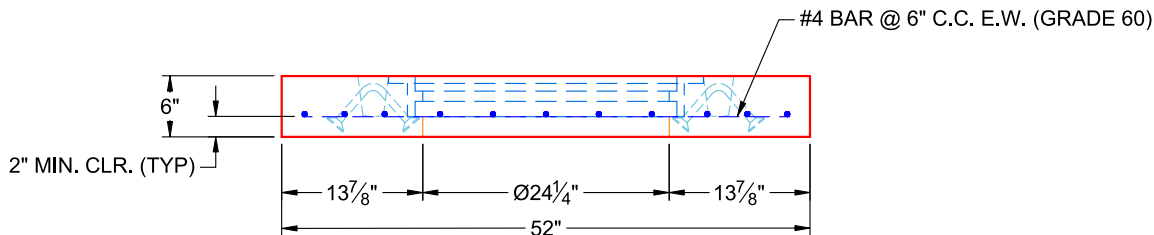
0 lb
 1134 lb
 6291 lb
 250 lb
 0 lb
 0 lb
 0 lb
 0 lb
 0 lb
 Structure Total: 7675 lb

Structure Notes:

1. PER ASTM C-913 SPECIFICATIONS
2. CONCRETE: 4,500 PSI AT 28 DAYS
3. REINFORCEMENT: #4 BAR @ 6" C.C. E.W. (GRADE 60) - 2" MIN. REBAR CLEARANCE (TYP)
4. JBS 2072 FRAME & GRATE SUPPLIED BY ICAST - FRAME TO BE CAST INTO FLAT LID FLANGE SIDE UP
5. LIFTERS: 4 EA. 4CA14 CONAC A-ANCHORS FOR PLANT & FIELD HANDLING
6. TOP SURFACE TO RECEIVE LIGHT BRUSH FINISH



PLAN VIEW



FRONT VIEW

Coating (Int):
 Coating (Ext):

Seam Up: Flat
 Seam Dn: Flat

Wall Thickness: 8"

Height (Ext): 6"

Weight (Net): 1285 lb
 Volume (Net): 0.33cu.yd