

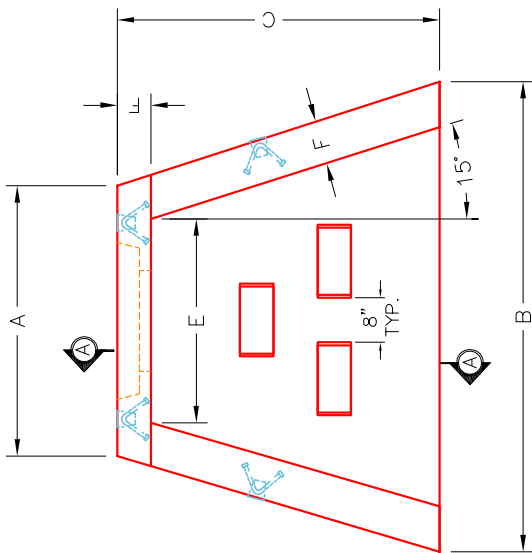


Structure ID: 54454 (2)

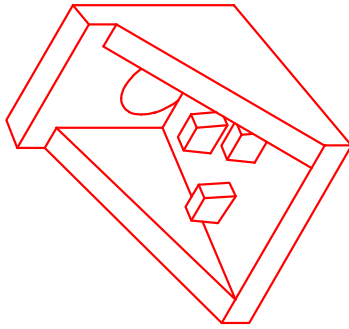
P1 HAW15FD

15" - HW AW w/FLAT BTM/DISSIPATORS F/F

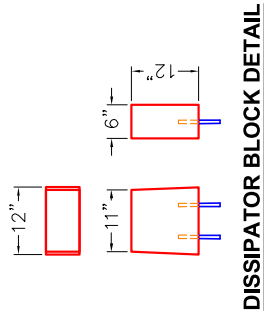
DIMENSIONS & QUANTITIES											
TYPE	PIPE Ø	A	B	C	D	E	F	G	QTY. BLOCKS	WEIGHT W/TOE	WEIGHT
AW	15"	2'-8"	4'-0"	2'-6"	2'-2"	2'-0"	6"	0"	3 EA.	1,845 LBS.	1,595 LBS.



PLAN VIEW

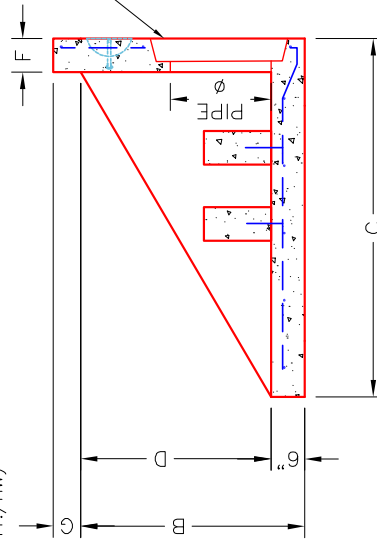


ISOMETRIC VIEW

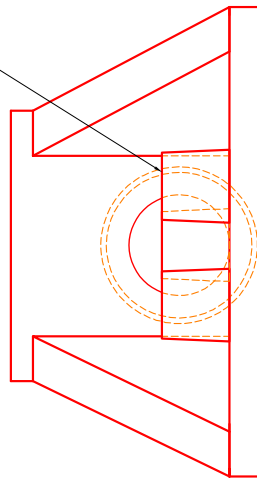


DISSIPATOR BLOCK DETAIL

CONCRETE ENERGY DISSIPATOR BLOCKS (SEE CHART FOR QTY./HW)



SECTION A-A

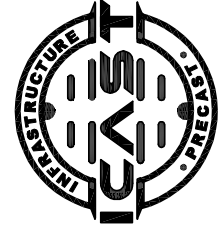


FRONT ELEVATION

~NOTES:

1. CONCRETE: 4500 PSI AT 28 DAYS MINIMUM COMPRESSIVE STRENGTH.
2. REINFORCING: #4 BAR @ 12" C/C E.W.-GRADE 60, (WITH 2" CONCRETE COVER MINIMUM)
3. REINFORCING BARS TO BE TACK WELDED OR TIED.
4. PIPE AND LIFTING ANCHOR POCKETS TO BE GROUTED WITH NON-SHRINK GROUT AFTER SETTING.
5. PREFORMED STEPPED HOLE SIZED AS PER O.D. OF PIPE + 3"-4".
6. OPTIONAL FOOTING (TOE) AVAILABLE FOR ALL SIZES.
7. DISSIPATOR BLOCKS INSTALLED POST POUR OF HEADWALL WITH 2 EA. #5 REBAR DOWELS.

INFRASTRUCTURE PRECAST, INC.
 981 WEST 7TH ST., BEAVER DAM, KY. 42320
 PHONE: (270) 363-2238; FAX: (270) 298-7424



PRECAST WINGED HEADWALL WITH ENERGY DISSIPATORS

DRAWING NO.: INMETRO SF-HW DATE: 01-04-23

REVIEWED BY: J.H. ROSS, PE DRAWN BY: N. RICHARDS

WEB: WWW.ICASTINC.COM SCALE: NTS