

Job Name: 25-4448 Chipotle Frankfort
 Job Location: Frankfort, KY
 Contractor: Lagco Inc.

Plant: Beaver Dam

Tech: S. Felletter

2/5/2026 9:27:22 AM

PC: C. Goff



Structure ID: ST-3 (4)

P2 MH048LD07-24X30RECT

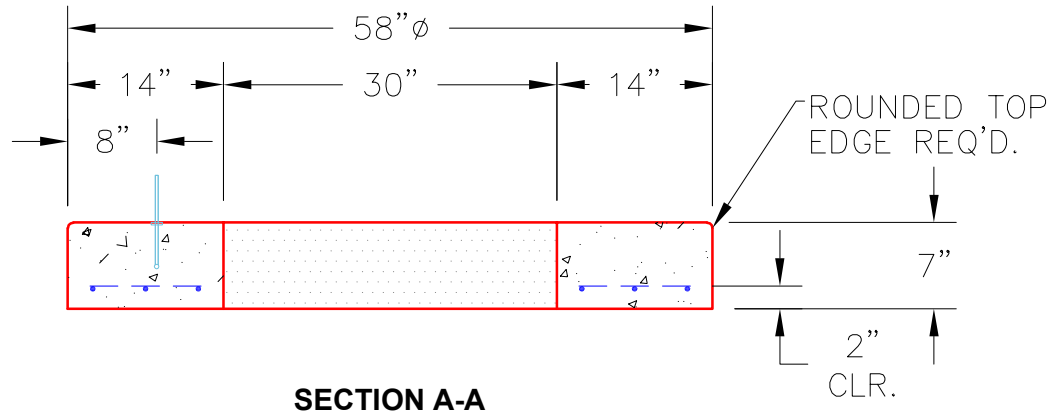
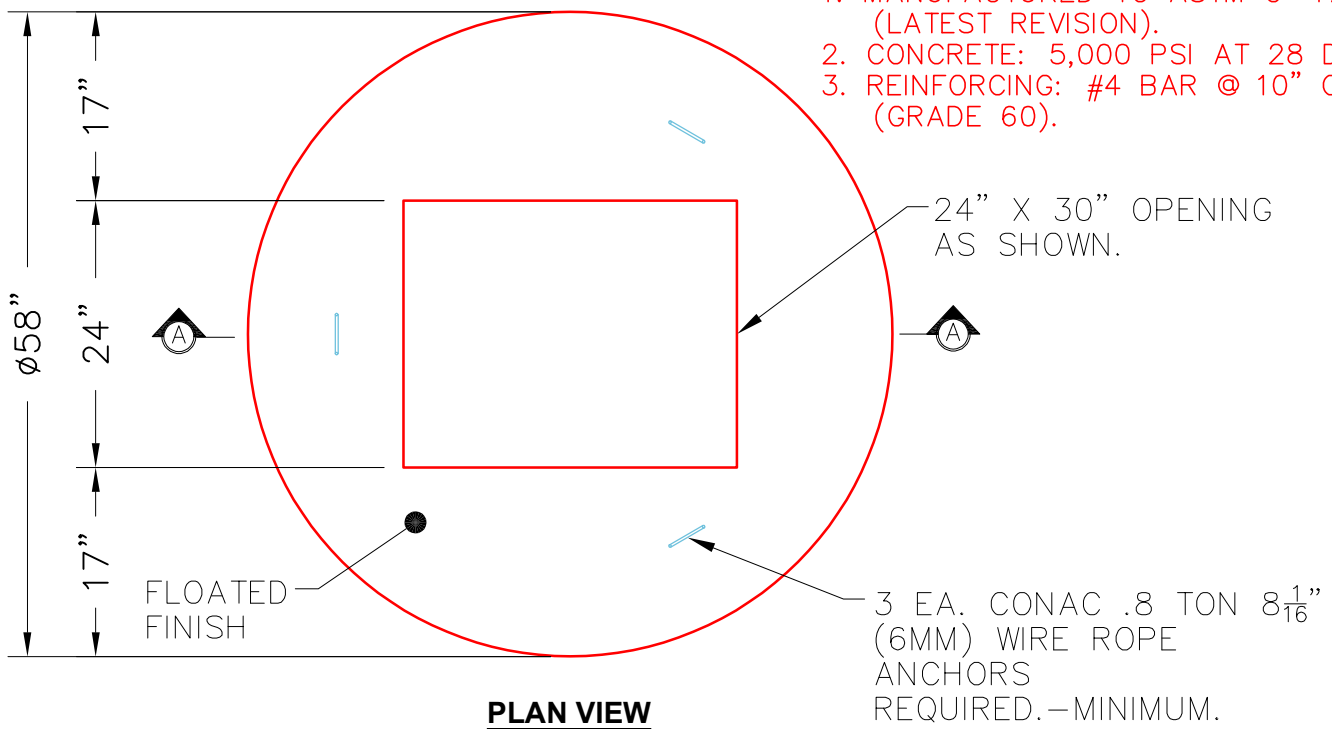
MH FLAT TOP w/24"x30" Hole F/F

- P3) 24" x 30" - CASTING HEIGHT - 3.75"
- P2) 48" - MH FLAT TOP w/24"x30" Hole F/F - 7"
- P1) 48" - MH BASE Custom Ht F/n - 26"
- 1) 48" - Conseal CS-102 1.00"
- 1) 24" x 30" - Conseal CS-102 1.00"
- 2) Hole - 16

	0 lb	Structure Notes:
	1129 lb	1. PER ASTM C478 SPECIFICATIONS.
	2881 lb	2. CONCRETE = 4,000 PSI AT 28 DAYS.
	0 lb	3. NO INVERT CHANNEL.
	0 lb	4. REINFORCING PER ASTM A615 (GRADE 60).
	0 lb	- TOP SLAB (As .62) #5 BARS AT 6" C.C.E.W..
Structure Total:	4010 lb	- RISER/WALLS (As .12)
		- FLOOR (As .31) #5 BARS AT 12" C.C.E.W.
		5. CASTING HOE KY-460-11 BY ICAST.

NOTES:

1. MANUFACTURED TO ASTM C-478 (LATEST REVISION).
2. CONCRETE: 5,000 PSI AT 28 DAYS.
3. REINFORCING: #4 BAR @ 10" O.C. E.W. (GRADE 60).



Coating (Int): Coating (Ext):	Seam Up: Flat Seam Dn: Flat	Wall Thickness: 5"	Height (Ext): 7"	Weight (Net): 1129 lb Volume (Net): 0.29cu.yd
----------------------------------	--------------------------------	--------------------	------------------	--