

Structure ID: 54438 (2)

P1 MH048BA24

MH BASE T/n

P4) 24" - CASTING HEIGHT - 7" P3) 24" - GRADE RING F/F - 4" P2) 48" - ECC CONE w/ 24" HOLE F/G - 24" P1) 48" - MH BASE T/n - 24" 1) JOINT WRAP PRIMER - CONSEAL CS-75 (1 gal.) 1) JOINT WRAP - 0.065"x6"x50' CONSEAL CS212 1) 48" - MH INVERT CHANNEL - FULL HEIGHT 1) CASTING - HOE MC-375 F/C Sanitary 1) 48" - Conseal CS-102 1.00" (Double) 1) PSX - 12-08 NYLO 1) PSX - 8QRS-S NYLO 3) MH Step ML-10-TDS-NCR - 10"	0 lb 270 lb 1550 lb 2938 lb 0 lb 0 lb 1440 lb 271 lb 0 lb 8 lb 6 lb 0 lb ----- Structure Total: 6483 lb
--	--

Structure Notes:

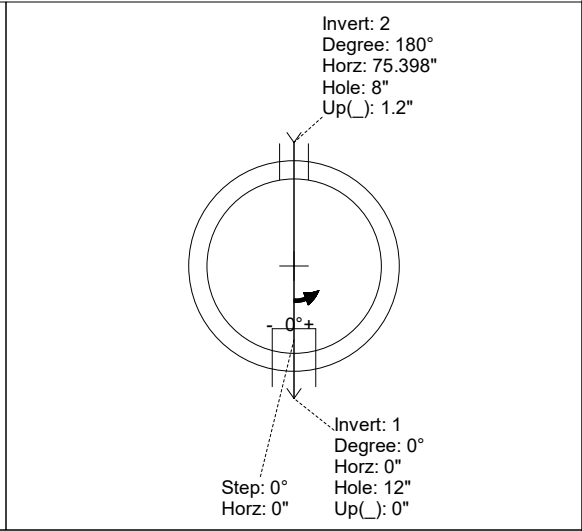
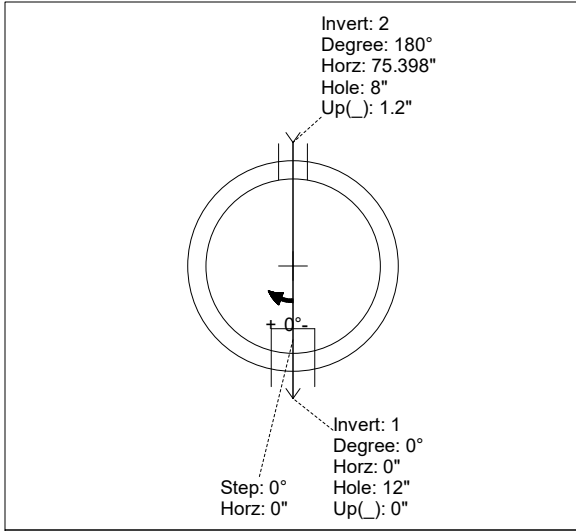
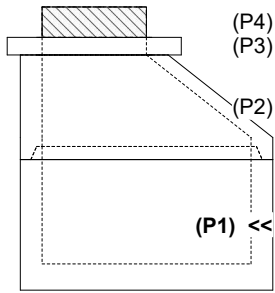
1. PER ASTM C-478 SPECS
2. CONCRETE: 4,500 PSI AT 28 DAYS
3. REINFORCEMENT: PER ASTM A615
4. INVERT CHANNEL REQUIRED
5. STEPS AT 0 DEGREES
6. HOE MC-375 FRAME & COVER "SANITARY" SUPPLIED BY ICAST

Rim: 4.75' Rim to Invert: 4.75' Slack: 0" Sump: 2" Step Position: 0°

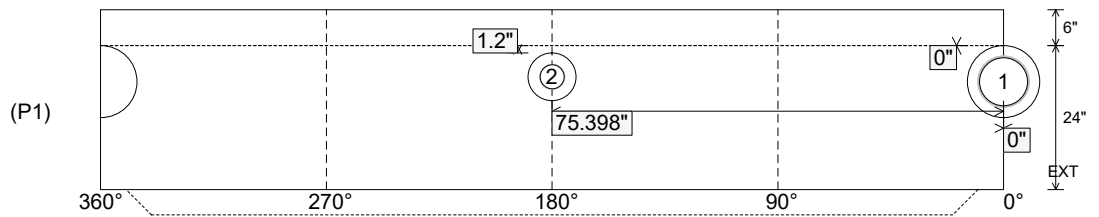
Position	Elev	Angle	Ext. (cw)	Pipe	Pipe OD	Connector	Hole	Horz Size	Up ()	Offset
Invert 1	0'	0°	0"	8" HDPE DR17	8.625"	PSX 12-08 NYLO	12"	12.129"	0"	0"
Invert 2	0.1'	180°	91.106"	4" PVC SDR35	4.25"	PSX 8QRS-S NYLO	8"	8.038"	1.2"	0"
Invert 3										
Invert 4										
Invert 5										
Invert 6										
Invert 7										
Invert 8										

RIGHT-SIDE UP VIEW (int. dimensions)

UPSIDE-DOWN VIEW (int. dimensions)



INSIDE WALL DIMENSIONS



Coating (Int): Coating (Ext):	Seam Up: Tongue Seam Dn: n/a	Wall Thickness: 5" Floor Height: 6"	Height (Int): 24" Height (Ext): 30"	Weight (Net): 2938 lb Volume (Net): 0.75cu.yd
----------------------------------	---------------------------------	--	--	--

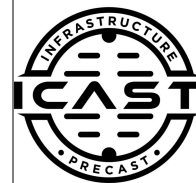
Job Name: 25-4438 - Carson St MH
 Job Location: CPU
 Contractor: Luttrell & Sons, LLC

Plant: Beaver Dam, KY

Tech: K. Cardwell

11/15/2025 9:28:14 AM

PC: T. Lewis



Structure ID: 54438 (2)

P1 MH048BA24

MH BASE T/n

- P4) 24" - CASTING HEIGHT - 7"
- P3) 24" - GRADE RING F/F - 4"
- P2) 48" - ECC CONE w/ 24" HOLE F/G - 24"
- P1) 48" - MH BASE T/n - 24"
- 1) JOINT WRAP PRIMER - CONSEAL CS-75 (1 gal.)
- 1) JOINT WRAP - 0.065"x6"x50' CONSEAL CS212
- 1) 48" - MH INVERT CHANNEL - FULL HEIGHT
- 1) CASTING - HOE MC-375 F/C Sanitary
- 1) 48" - Conseal CS-102 1.00" (Double)
- 1) PSX - 12-08 NYLO
- 1) PSX - 8QRS-S NYLO
- 3) MH Step ML-10-TDS-NCR - 10"

0 lb
 270 lb
 1550 lb
 2938 lb
 0 lb
 0 lb
 1440 lb
 271 lb
 0 lb
 8 lb
 6 lb
 0 lb

 Structure Total: 6483 lb

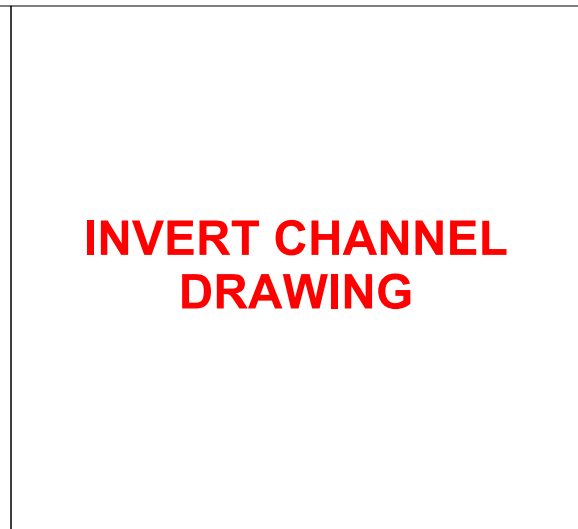
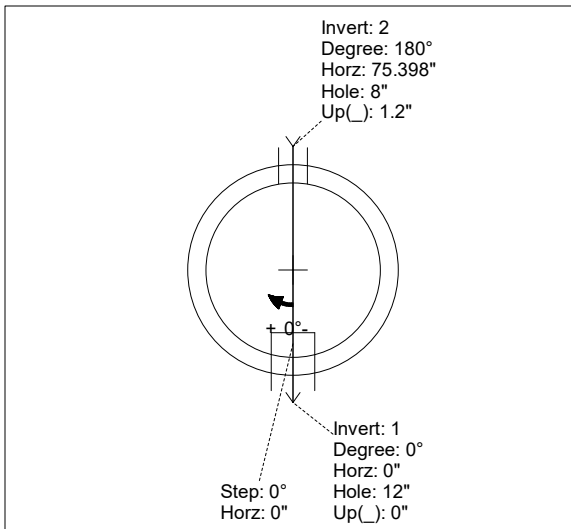
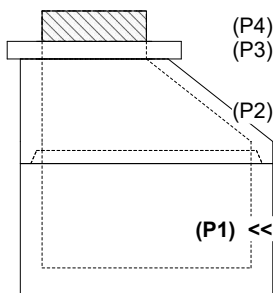
- Structure Notes:**
1. PER ASTM C-478 SPECS
 2. CONCRETE: 4,500 PSI AT 28 DAYS
 3. REINFORCEMENT: PER ASTM A615
 4. INVERT CHANNEL REQUIRED
 5. STEPS AT 0 DEGREES
 6. HOE MC-375 FRAME & COVER "SANITARY" SUPPLIED BY ICAST

Rim: 4.75' Rim to Invert: 4.75' Slack: 0" Sump: 2" Step Position: 0°

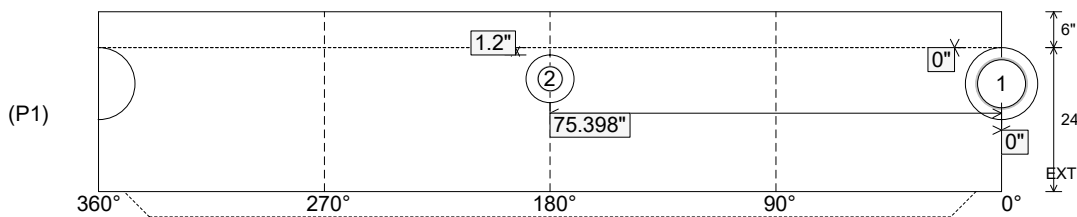
Position	Elev	Angle	Ext. (cw)	Pipe	Pipe OD	Connector	Hole	Horz Size	Up ()	Offset
Invert 1	0'	0°	0"	8" HDPE DR17	8.625"	PSX 12-08 NYLO	12"	12.129"	0"	0"
Invert 2	0.1'	180°	91.106"	4" PVC SDR35	4.25"	PSX 8QRS-S NYLO	8"	8.038"	1.2"	0"
Invert 3										
Invert 4										
Invert 5										
Invert 6										
Invert 7										
Invert 8										

RIGHT-SIDE UP VIEW (int. dimensions)

UPSIDE-DOWN VIEW (int. dimensions)



INSIDE WALL DIMENSIONS



Coating (Int):
 Coating (Ext):

Seam Up: Tongue
 Seam Dn: n/a

Wall Thickness: 5"
 Floor Height: 6"

Height (Int): 24"
 Height (Ext): 30"

Weight (Net): 2938 lb
 Volume (Net): 0.75cu.yd