

Job Name: 25-4436 - Chipotle Carriage Gate
 Job Location: Richmond, KY 40475
 Contractor: Lagco Inc.

Plant: 100

2/11/2026 1:49:41 PM

Tech: J. Horsley - A

PC: Celina Goff



Structure ID: ST-2 (3)

P1 BX3654-08BAVF

BOX BASE 8inW, 8inF, Variable Ht F/n

- P2) 36" x 54" - P.I.P. - BY OTHERS - 8"
- P1) 36" x 54" - BOX BASE 8inW, 8inF, Variable Ht F/n - 27"
- 1) SECONDARY POUR
- 1) CASTING - HOE KY-328 SET (DBI 7)
- 1) 36" x 54" - Conseal CS-102 1.00"
- 1) Hole - 20
- 1) Hole - 18

0 lb
 5904 lb
 0 lb
 328 lb
 0 lb
 0 lb
 0 lb

 0 lb
 Structure Total: 6232 lb

- Structure Notes:
1. PER ASTM C-913 SPECIFICATIONS
 2. CONCRETE: 4,000 PSI AT 28 DAYS
 3. REINFORCEMENT: #5 BAR @ 12" C.C. E.W. (GRADE 60) - 2" MIN. REBAR CLEARANCE (TYP)
 4. NO STORM INVERT
 5. NO STEPS
 6. HOE KY-328 (DBI TY 7) FRAME & GRATES SUPPLIED BY ICAST
 7. WET STICK 18" X 20" #5 L-BARS SPACED @ 12" C.C. (GRADE 60) OUT OF FLOOR FOR WALL POUR TIE-IN (SEE L-BAR DETAIL)

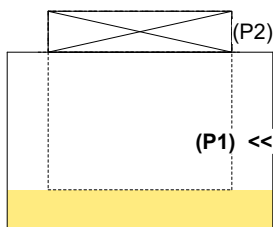
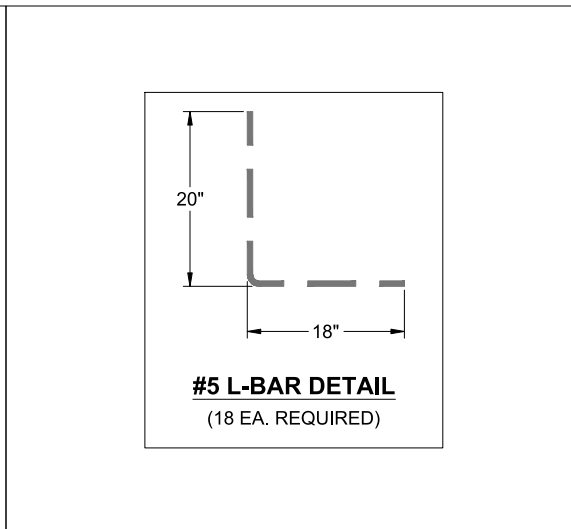
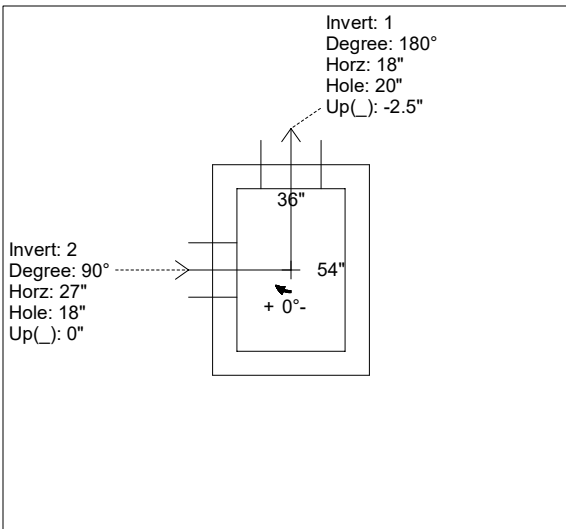
FIRST POUR (FLOOR): 2,444 LBS
SECOND POUR (WALLS): 3,460 LBS

Rim: 935' Rim to Invert: 2.99' Slack: 0.88" Sump: 0" Step Position:

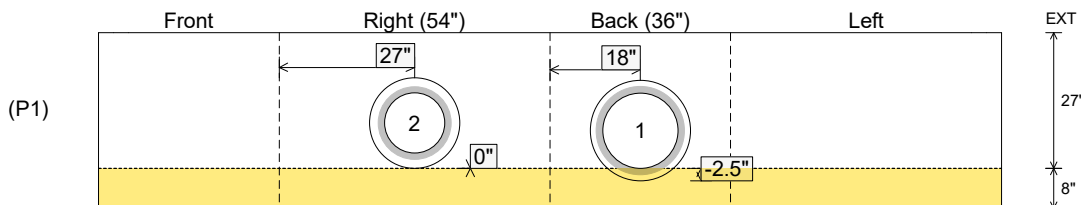
| Position | Elev | Angle | Ext. (cw) | Pipe | Pipe OD | Connector | Hole | Horz Size | Up () | Offset |
|----------|---------|-------|-----------|----------|---------|-----------|------|-----------|--------|--------|
| Invert 1 | 932.01' | 180° | 26" | 15" HDPE | 17.6" | Hole 20 | 20" | 20" | -2.5" | 0" |
| Invert 2 | 932.26' | 90° | 35" | 12" HDPE | 14.5" | Hole 18 | 18" | 18" | 0" | 0" |
| Invert 3 | | | | | | | | | | |
| Invert 4 | | | | | | | | | | |
| Invert 5 | | | | | | | | | | |
| Invert 6 | | | | | | | | | | |
| Invert 7 | | | | | | | | | | |
| Invert 8 | | | | | | | | | | |

RIGHT-SIDE UP VIEW (int. dimensions)

UPSIDE-DOWN VIEW (int. dimenions)



INSIDE WALL DIMENSIONS



Coating (Int):
 Coating (Ext):

Seam Up: Flat
 Seam Dn: n/a

Wall Thickness: 8"
 Floor Height: 8"

Height (Int): 27"
 Height (Ext): 35"

Weight (Net): 5904 lb
 Volume (Net): 1.51cu.yd

Job Name: 25-4436 - Chipotle Carriage Gate
 Job Location: Richmond, KY 40475
 Contractor: Lagco Inc.

Plant: 100

Tech: J. Horsley - A

2/11/2026 1:49:41 PM

PC: Celina Goff



Structure ID: ST-2 (3)

P1 BX3654-08BAVF

BOX BASE 8inW, 8inF, Variable Ht F/n

- P2) 36" x 54" - P.I.P. - BY OTHERS - 8"
- P1) 36" x 54" - BOX BASE 8inW, 8inF, Variable Ht F/n - 27"
- 1) SECONDARY POUR
- 1) CASTING - HOE KY-328 SET (DBI 7)
- 1) 36" x 54" - Conseal CS-102 1.00"
- 1) Hole - 20
- 1) Hole - 18

0 lb
 5904 lb
 0 lb
 328 lb
 0 lb
 0 lb
 0 lb

 0 lb
 Structure Total: 6232 lb

- Structure Notes:
1. PER ASTM C-913 SPECIFICATIONS
 2. CONCRETE: 4,000 PSI AT 28 DAYS
 3. REINFORCEMENT: #5 BAR @ 12" C.C. E.W. (GRADE 60) - 2" MIN. REBAR CLEARANCE (TYP)
 4. NO STORM INVERT
 5. NO STEPS
 6. HOE KY-328 (DBI TY 7) FRAME & GRATES SUPPLIED BY ICAST
 7. STUB #5 BARS SPACED @ 12" C.C. 20" OUT TOP OF WALLS FOR FIELD POUR TIE-IN - MIN. 4" PENETRATION INTO WALLS
 8. LIFTERS: 4 EA. 4CA14 CONAC A-ANCHORS FOR PLANT & FIELD HANDLING - INSTALLED IN 90° & 270° WALLS, MIN. 10" FROM TOP OF WALLS

FIRST POUR (FLOOR): 2,444 LBS

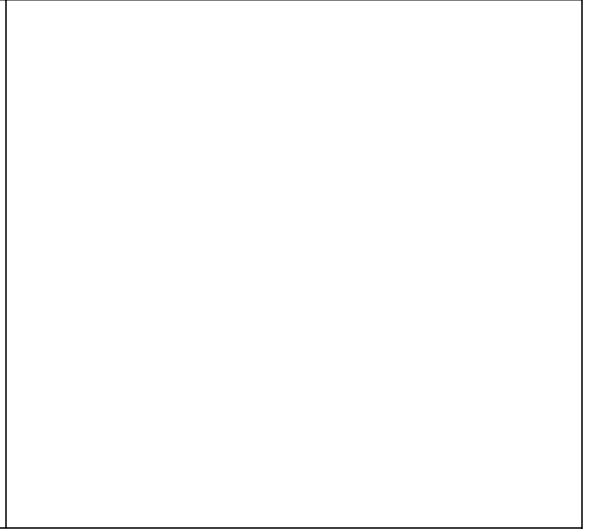
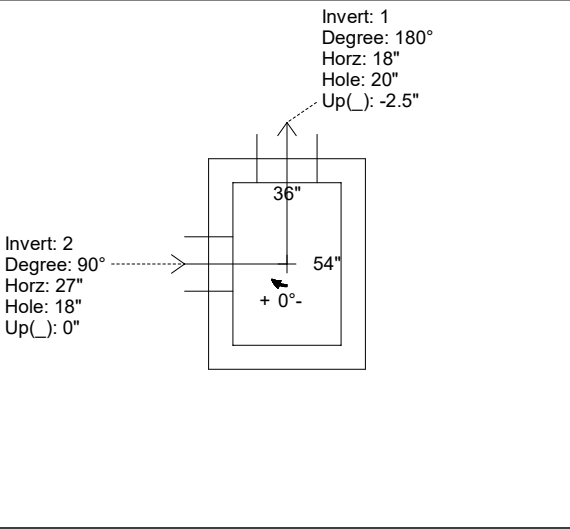
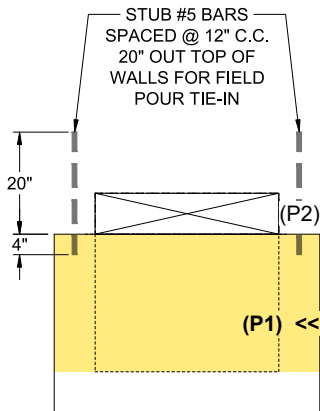
SECOND POUR (WALLS): 3,460 LBS

Rim: 935' Rim to Invert: 2.99' Slack: 0.88" Sump: 0" Step Position:

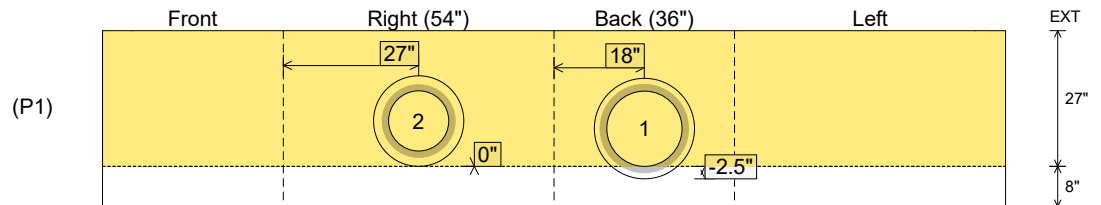
| Position | Elev | Angle | Ext. (cw) | Pipe | Pipe OD | Connector | Hole | Horz Size | Up () | Offset |
|----------|---------|-------|-----------|----------|---------|-----------|------|-----------|--------|--------|
| Invert 1 | 932.01' | 180° | 26" | 15" HDPE | 17.6" | Hole 20 | 20" | 20" | -2.5" | 0" |
| Invert 2 | 932.26' | 90° | 35" | 12" HDPE | 14.5" | Hole 18 | 18" | 18" | 0" | 0" |
| Invert 3 | | | | | | | | | | |
| Invert 4 | | | | | | | | | | |
| Invert 5 | | | | | | | | | | |
| Invert 6 | | | | | | | | | | |
| Invert 7 | | | | | | | | | | |
| Invert 8 | | | | | | | | | | |

RIGHT-SIDE UP VIEW (int. dimensions)

UPSIDE-DOWN VIEW (int. dimensions)



INSIDE WALL DIMENSIONS



Coating (Int):
 Coating (Ext):

Seam Up: Flat
 Seam Dn: n/a

Wall Thickness: 8"
 Floor Height: 8"

Height (Int): 27"
 Height (Ext): 35"

Weight (Net): 5904 lb
 Volume (Net): 1.51cu.yd