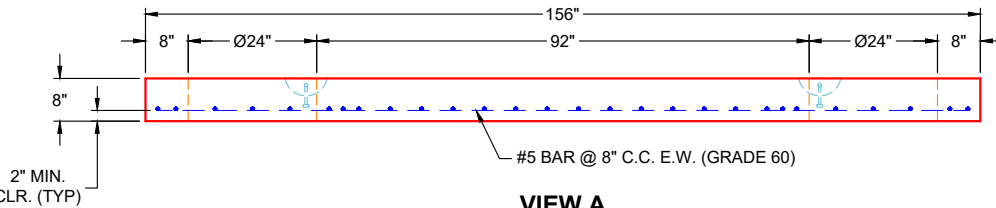
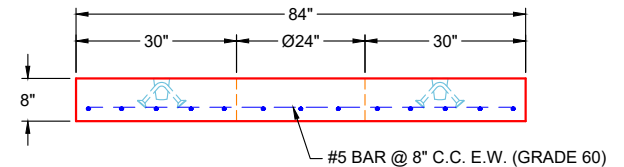


**PLAN VIEW**



**VIEW A**



**VIEW B**

**GENERAL NOTES:**

1. MANUFACTURED PER ASTM C-890-13 (LATEST REVISION)
2. CONCRETE: 5,000 PSI AT 28 DAYS
3. REINFORCEMENT: #5 BAR @ 8" C.C. E.W. (GRADE 60) - 2" MIN. REBAR CLEARANCE (TYP)
4. WEIGHT: 8,190 LBS
5. 2 EA. HOE MC-375 FRAMES & COVERS LETTERED "GREASE TRAP" SUPPLIED BY ICAST

**PRODUCTION WORK ORDER**

PRODUCT I.D.: BX072144-08LD06S

DESCRIPTION: 84" X 156" X 8" 1,500 GAL GREASE TRAP FLAT LID



**QUALITY CONTROL CHECKLIST**

- ALL DIMENSIONS CORRECT.
- LIFTERS INSTALLED.
- HOLE LOCATION(S) CORRECT.
- REINFORCING & SPACING CORRECT.
- DIAGONAL STEEL TIED IN.
- FLAT ON BOTTOM OF SLAB.
- UNIFORM FLOATED SURFACE.

PRODUCT VIEW: RIGHT SIDE UP

CUSTOMER: LAGCO INC.

PLANT: BEAVER DAM, KY

PROJECT: CHIPOTLE CARRIAGE GATE

WEIGHT: 8,190 LBS

STRUCTURE: 54436 (9)

TOP SECTION JOINT: N / A

ORDER NO: 25-4436

BASE SECTION JOINT: N / A

PE: J.H. ROSS

DRAWING: K. CARDWELL

QC CHECK INITIALS:

DATE: 01/27/26

SCALE: NTS

PG. 1 OF 1